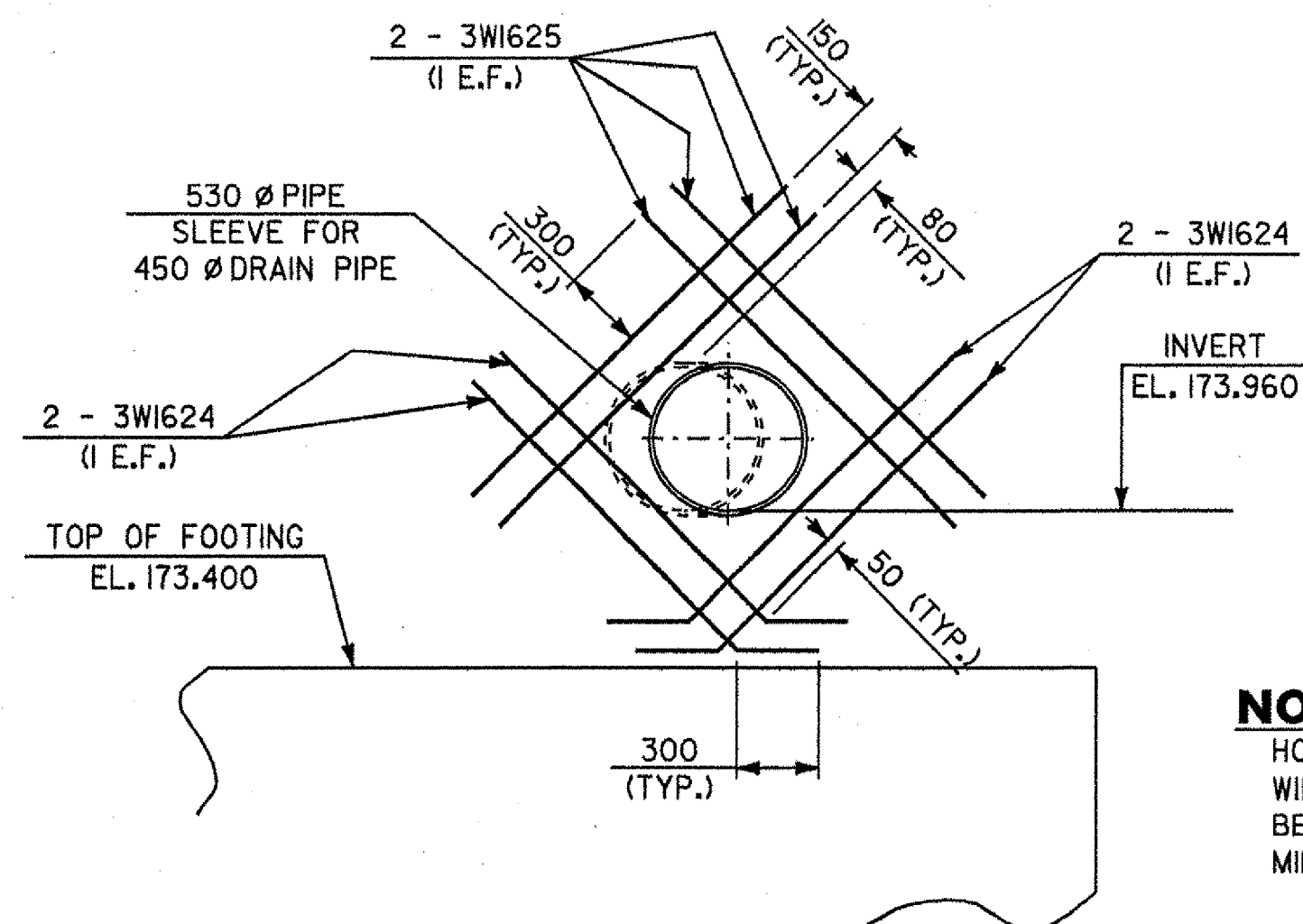
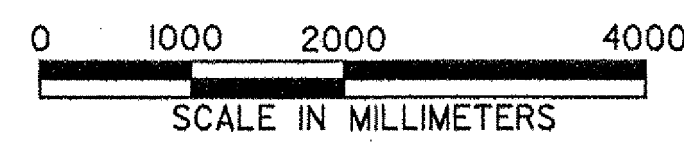


WINGWALL NO. 2 ELEVATION



DETAIL A

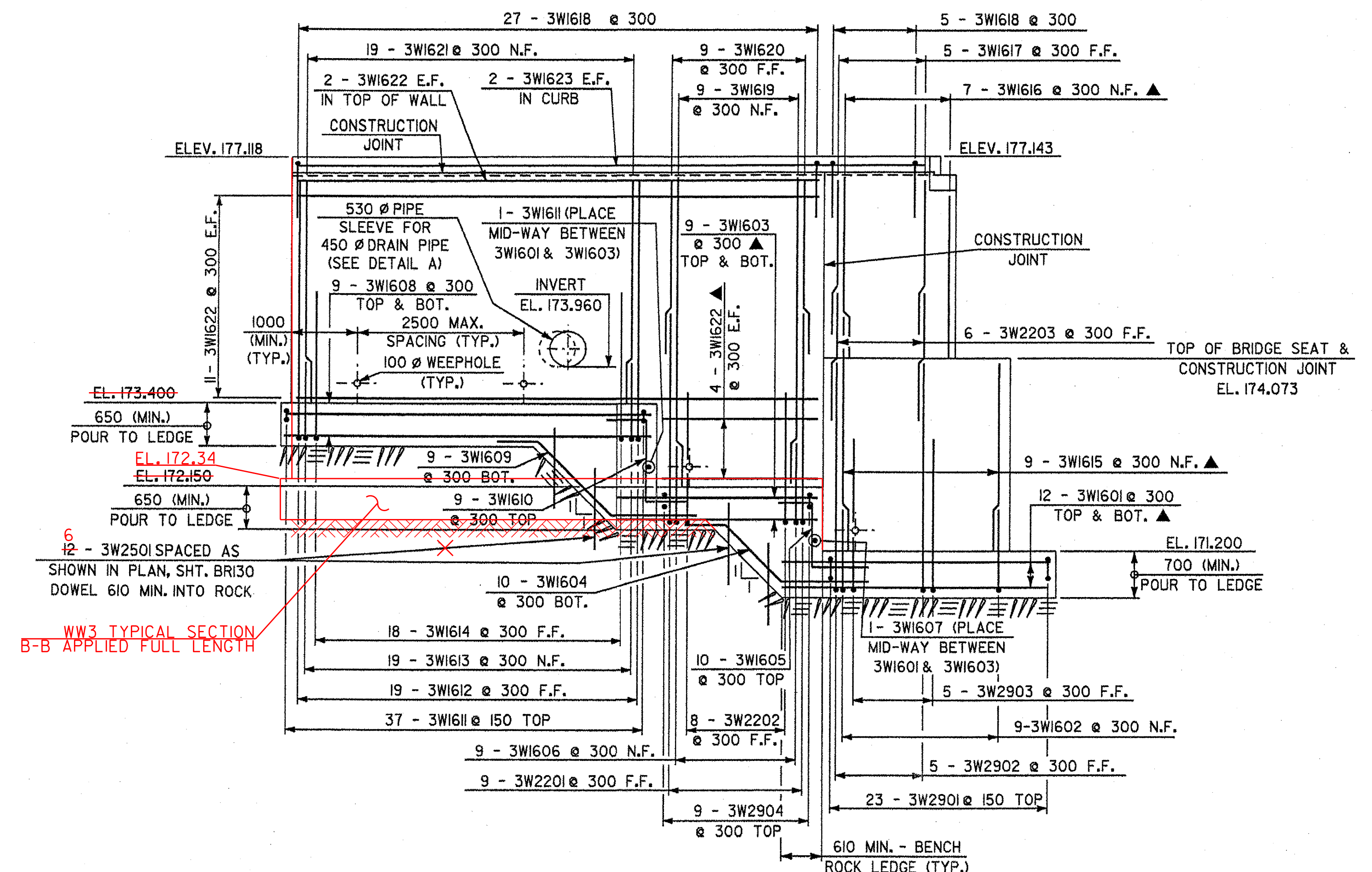


NOTE:
HORIZONTAL AND VERTICAL REINFORCING IN WINGWALL, NOT SHOWN IN DETAIL A, SHALL BE CUT AS REQUIRED TO MAINTAIN A MINIMUM 80 COVER AROUND PIPE SLEEVE.

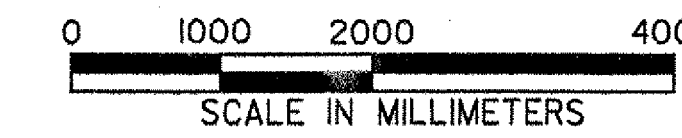
NOTES:

- N.F. - NEAR FACE
- F.F. - FAR FACE
- E.F. - EACH FACE
- REINFORCING COVER 80 CLEAR ON ALL FACES EXCEPT WHERE NOTED.
- MINIMUM LAP LENGTH FOR HORIZONTAL #16 BARS IS 610 UNLESS NOTED OTHERWISE.
- ▲ - CUT TO FIT IN FIELD
- * - PLACED RADIAL.
- FOR SECTIONS A-A, B-B AND C-C, SEE SHEET BRI25.

WW3 TYPICAL SECTION B-B APPLIED FULL LENGTH



WINGWALL NO. 3 ELEVATION



STATE OF VERMONT AGENCY OF TRANSPORTATION		
Town Of	HARTLAND	Bridge No. 60
Highway No.	U.S. ROUTE 5	Log Sta.
		Surv. Sta.
U.S. ROUTE 5 OVER LULLS BROOK		
WINGWALL NO. 2 & NO. 3 ELEVATIONS		
Designed By	S. BAKI	Drawn By W. GAYNOR
Checked By	Date	Bridge Design Supervisor
	S. BAKI	J. MIECZKOWSKI Date
PROJECT	HARTLAND	PROJECT NO.
		BRS No. 0113(22)
I.G.C. Info. M:\1456201\VA0T Hartland\struct\z2f204wdt.dgn		
Bridge Sheet No.	BRI24	Sheet 59 of 86