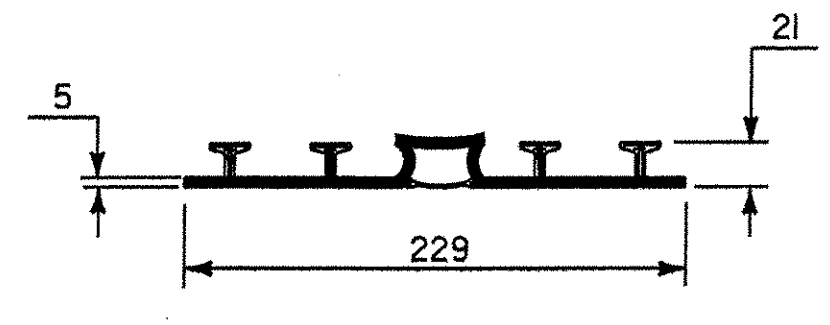
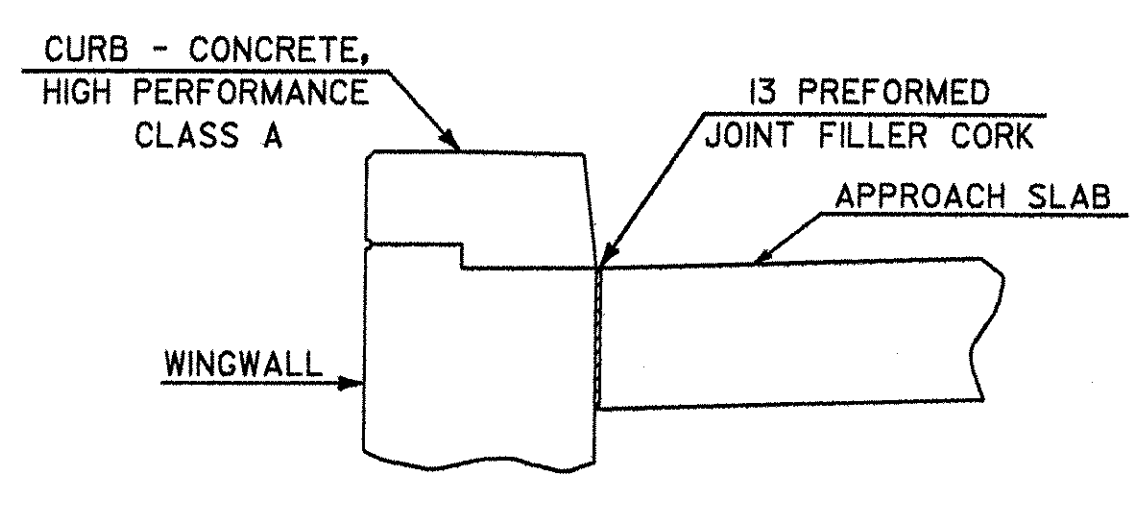


TYPICAL CONCRETE CONSTRUCTION JOINT
NOT TO SCALE

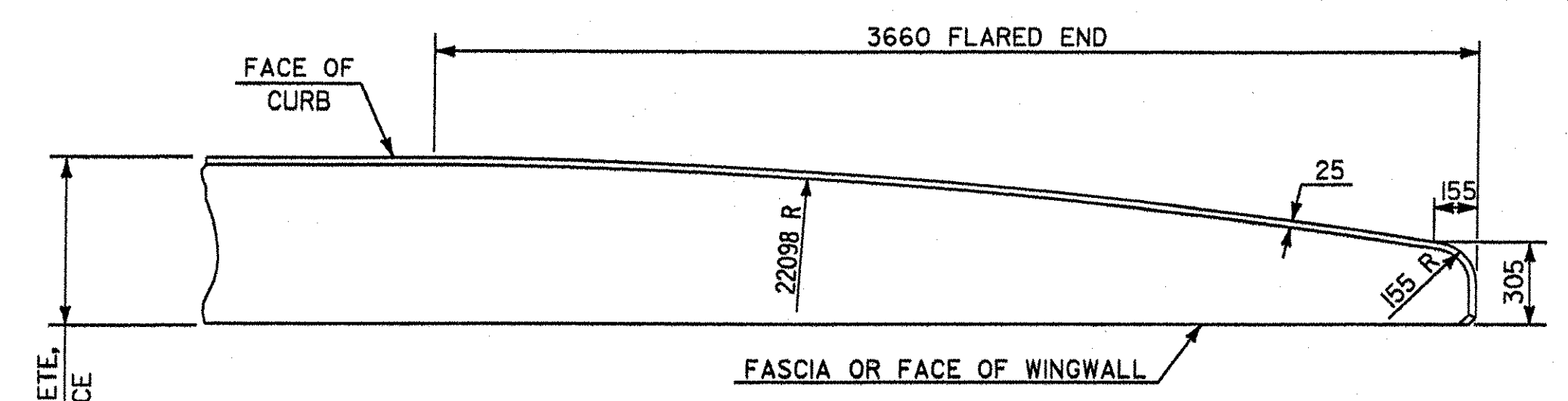


P. V. C. WATERSTOP FOR EXPANSION JOINTS
NOT TO SCALE

THE COSTS FOR P. V. C. WATERSTOP SHALL BE INCLUDED IN THE UNIT PRICE BID FOR CONCRETE, HIGH PERFORMANCE CLASS B, ITEM 501.34. OTHER CONFIGURATIONS MAY BE USED UPON APPROVAL OF THE STRUCTURES ENGINEER.



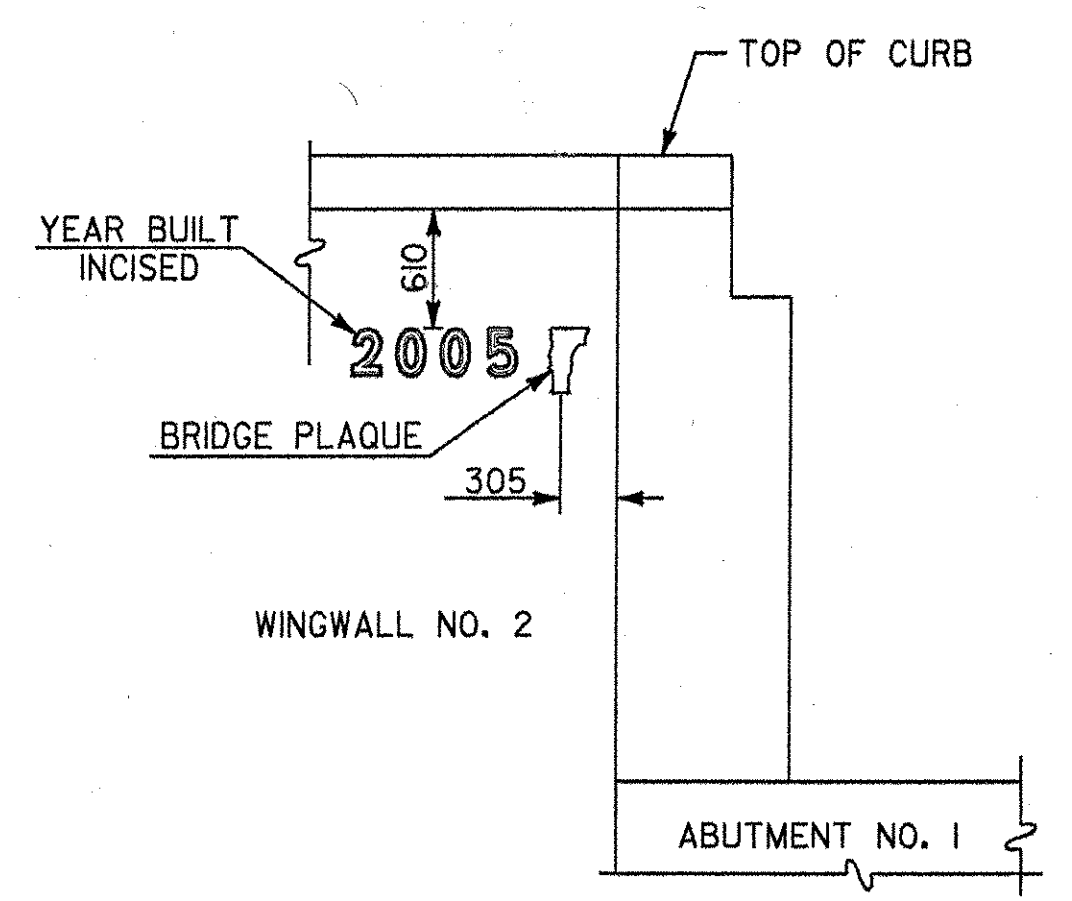
DETAIL OF APPROACH SLAB AGAINST WINGWALL
SCALE IN MILLIMETERS



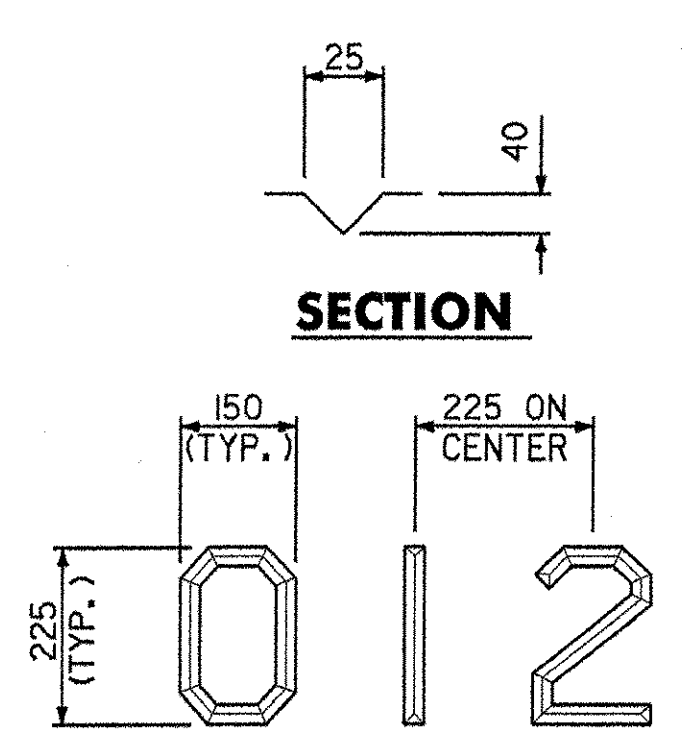
FLARED END DETAIL FOR 2'-0" CURB

SCALE IN MILLIMETERS

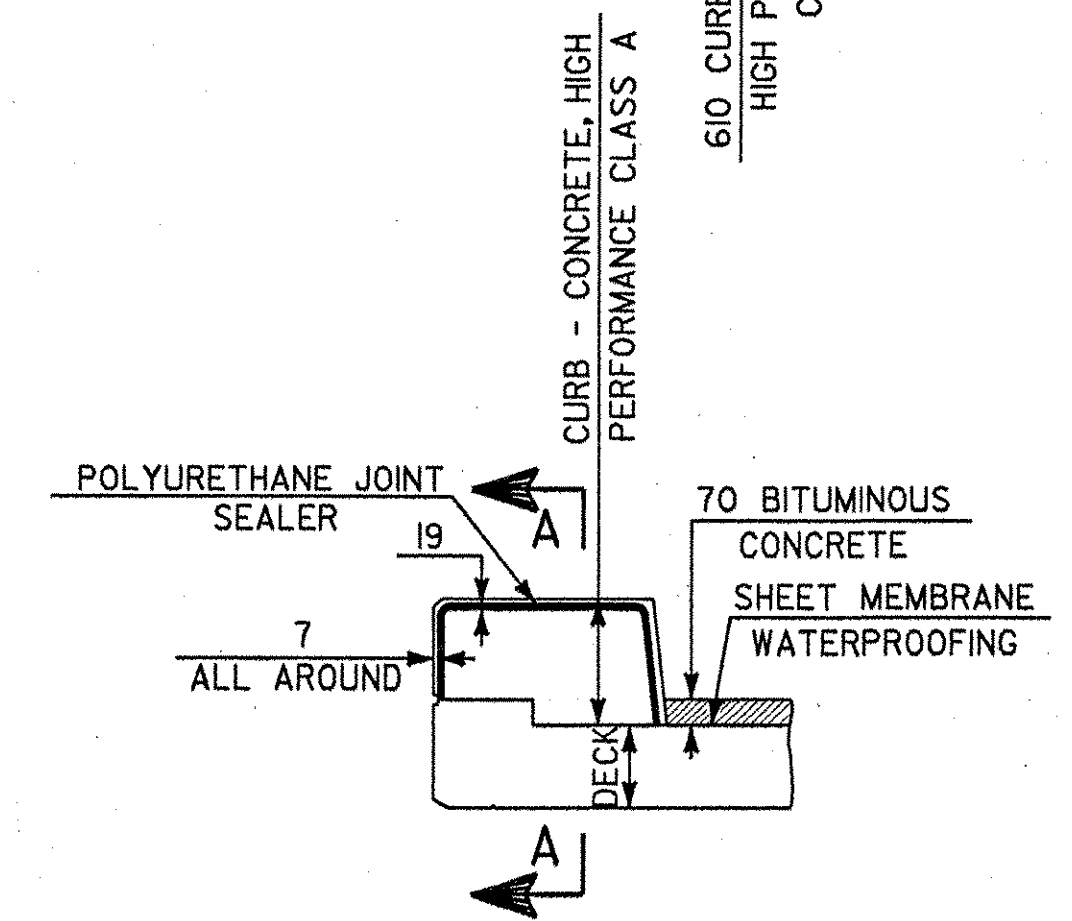
CURB REINFORCING STIRRUP BARS SHALL BE TURNED AS REQUIRED TO FIT FLARED END.



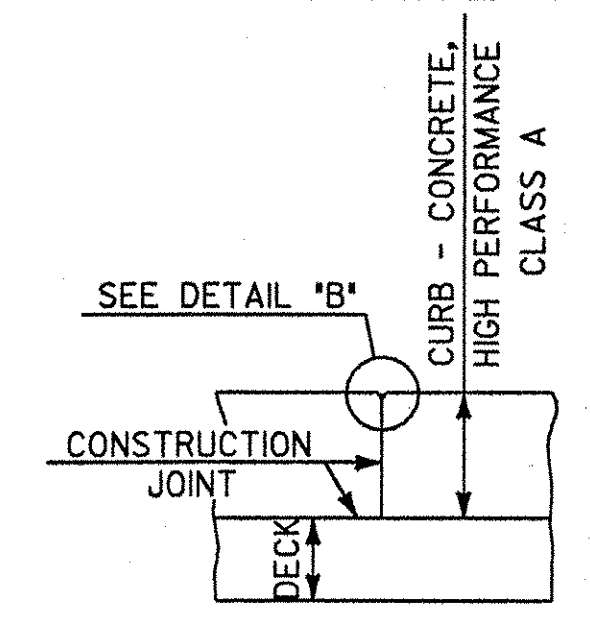
ELEVATION



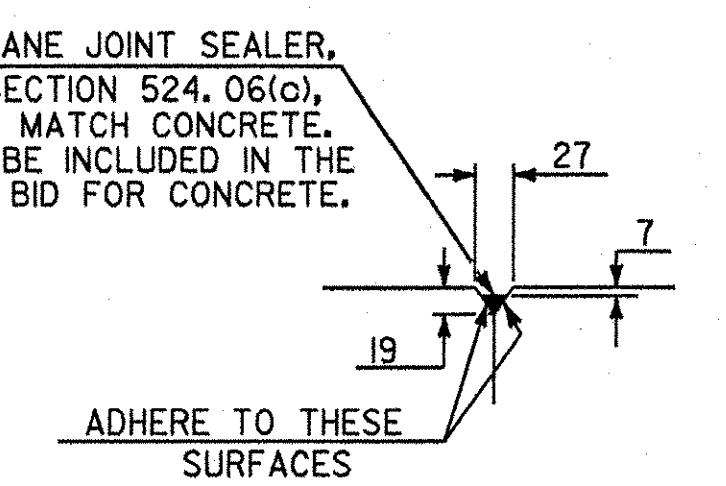
INCISED NUMBERS DETAIL
N. T. S.



TYPICAL SECTION THROUGH CONCRETE CURB CONSTRUCTION JOINT
NOT TO SCALE



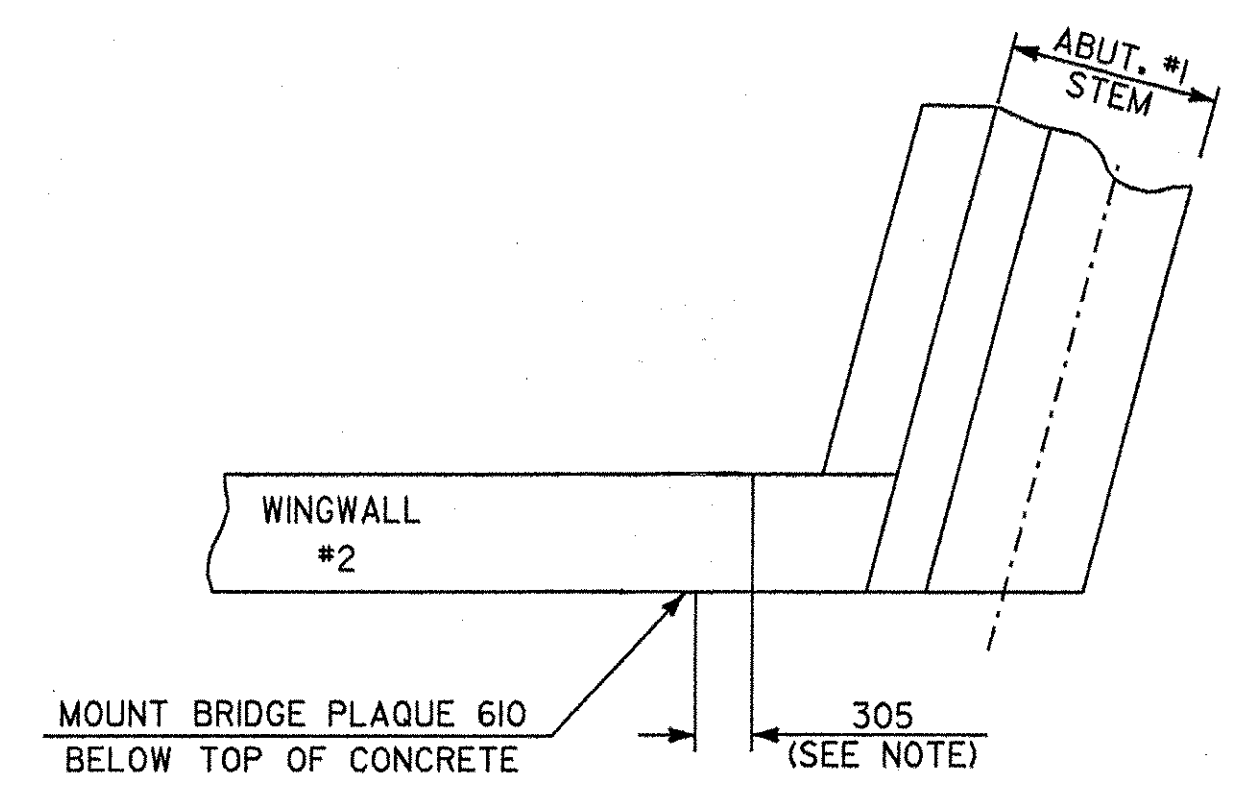
SECTION A-A
NOT TO SCALE



DETAIL "B"
NOT TO SCALE

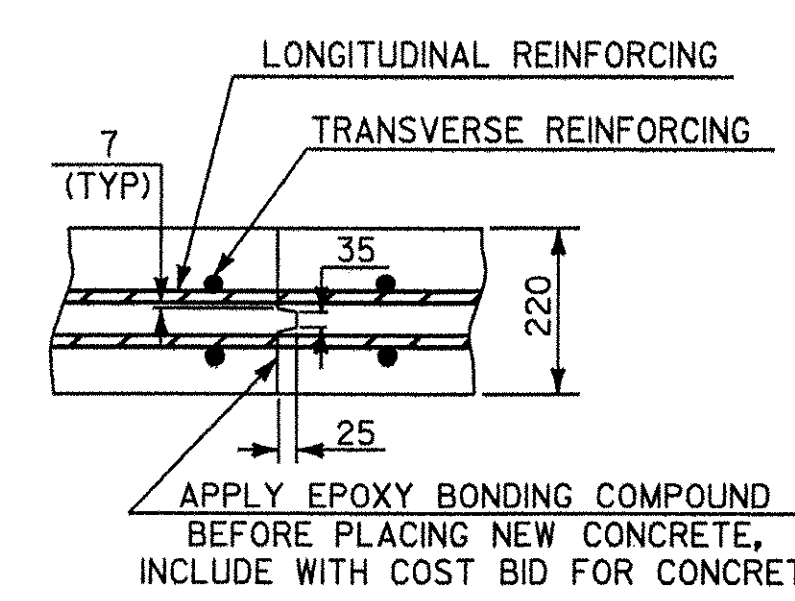
NOTES:

1. CONSTRUCTION JOINTS THROUGH CONCRETE CURBS SHALL BE SPACED MAXIMUM 600 CENTER TO CENTER AND SHALL BE 455 MINIMUM FROM THE CENTER OF THE NEAREST BRIDGE RAIL POST. CONCRETE SHALL BE PLACED IN ALTERNATING SECTIONS WITH A MINIMUM OF 48 HOURS DELAY BETWEEN ADJACENT POURS.
2. LONGITUDINAL REINFORCING SHALL PASS THROUGH CONCRETE CURB CONSTRUCTION JOINTS.
3. POLYURETHANE MEMBRANE AND BLAST CLEANING SHALL BE INCLUDED IN THE UNIT PRICE BID FOR SHEET MEMBRANE WATERPROOFING.
4. SHEET MEMBRANE WATERPROOFING SHALL EXTEND TO FACE OF CURB AS SHOWN ABOVE LEFT.
5. ALL CONCRETE IN CURBS SHALL BE CONCRETE, HIGH PERFORMANCE CLASS A.



BRIDGE PLAQUE LOCATION DETAIL
NOT TO SCALE

THE BRIDGE PLAQUE WILL BE SUPPLIED BY THE AGENCY OF TRANSPORTATION AND SHALL BE INSTALLED BY THE CONTRACTOR AT ABUTMENT NO. 1 ON THE RIGHT SIDE AS SHOWN OR AS DIRECTED BY THE ENGINEER.



TRANSVERSE BRIDGE SLAB CONSTRUCTION JOINT DETAILS
NOT TO SCALE

STATE OF VERMONT AGENCY OF TRANSPORTATION

| | | | |
|-------------------------------|--------------|------------|----|
| Town Of | HARTLAND | Bridge No. | 60 |
| Highway No. | U.S. ROUTE 5 | Log Sta. | |
| | | Surv. Sta. | |
| U.S. ROUTE 5 OVER LULLS BROOK | | | |

| MISCELLANEOUS DETAILS | | | |
|---|----------|--------------------------|------------------|
| Designed By | S. BAKI | Drawn By | W. GAYNOR |
| Checked By | Date | Bridge Design Supervisor | |
| | S. BAKI | J. MIECZKOWSKI | Date |
| PROJECT | HARTLAND | PROJECT NO. | BRS No. 0113(22) |
| I.G.C. Info. M:\45620\VAOT Hartland\struct\zf204mdt.dgn | | | |
| Bridge Sheet No. B120 | | Sheet 55 of 86 | |