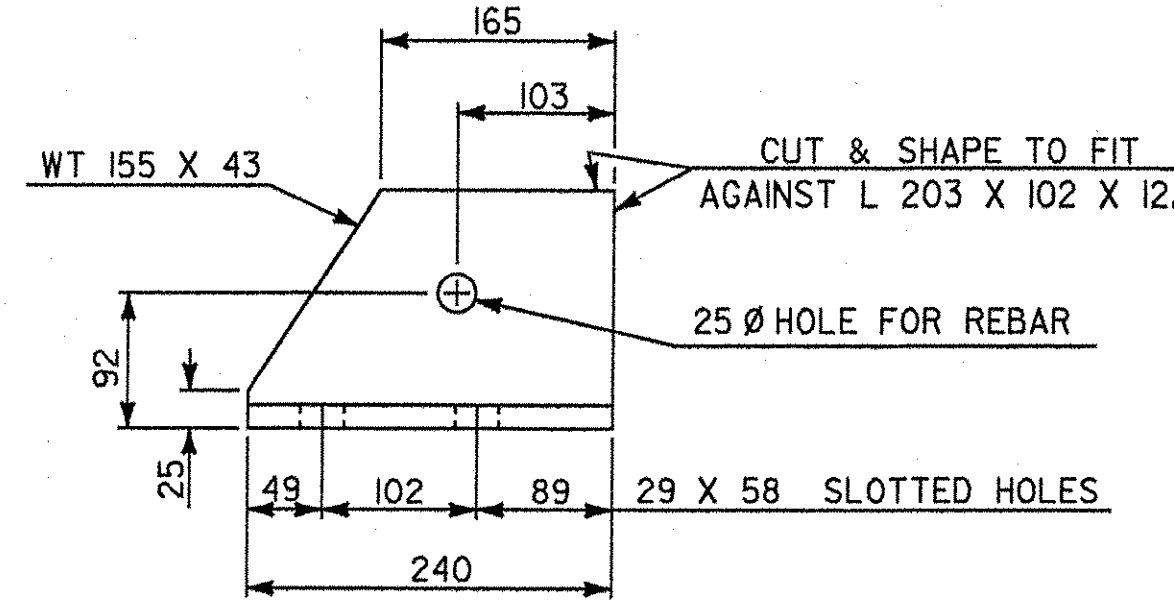
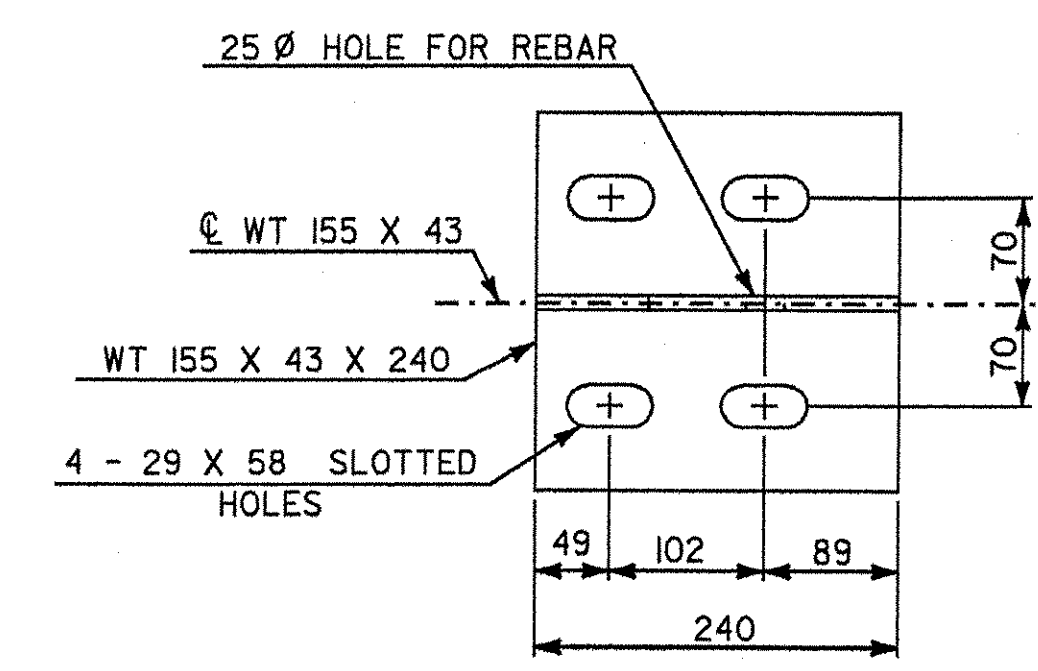


PLAN

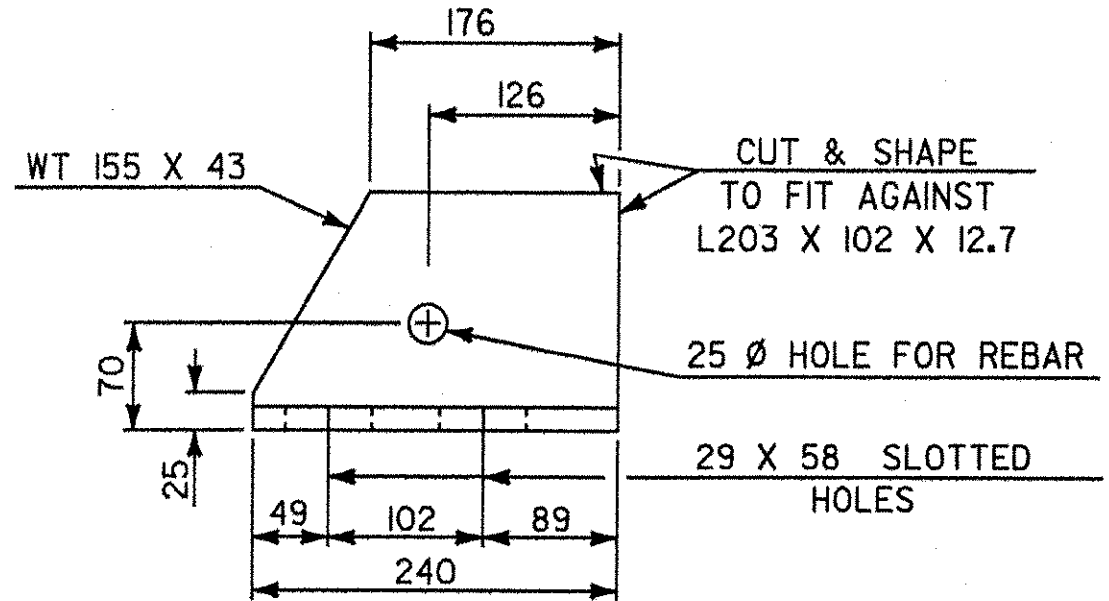


ELEVATION

BACKWALL SUPPORT ASSEMBLY BRACKET DETAIL
SCALE IN MILLIMETERS

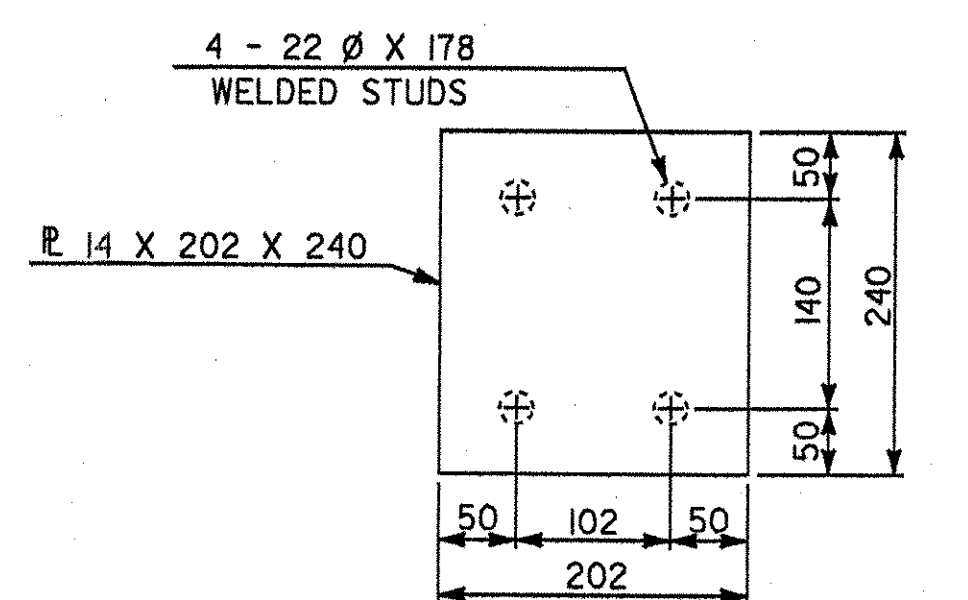


PLAN

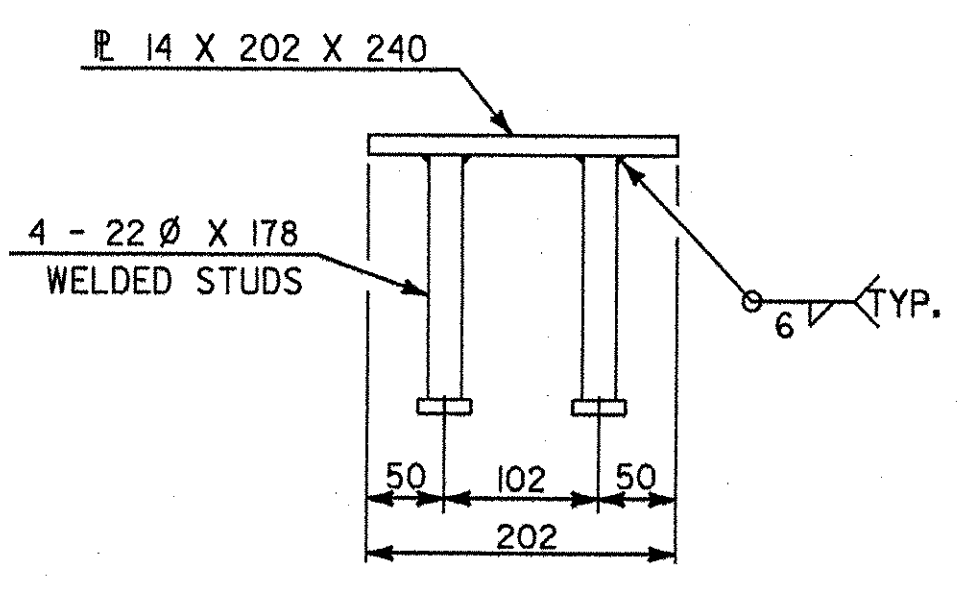


ELEVATION

GIRDER SUPPORT ASSEMBLY BRACKET DETAIL
SCALE IN MILLIMETERS

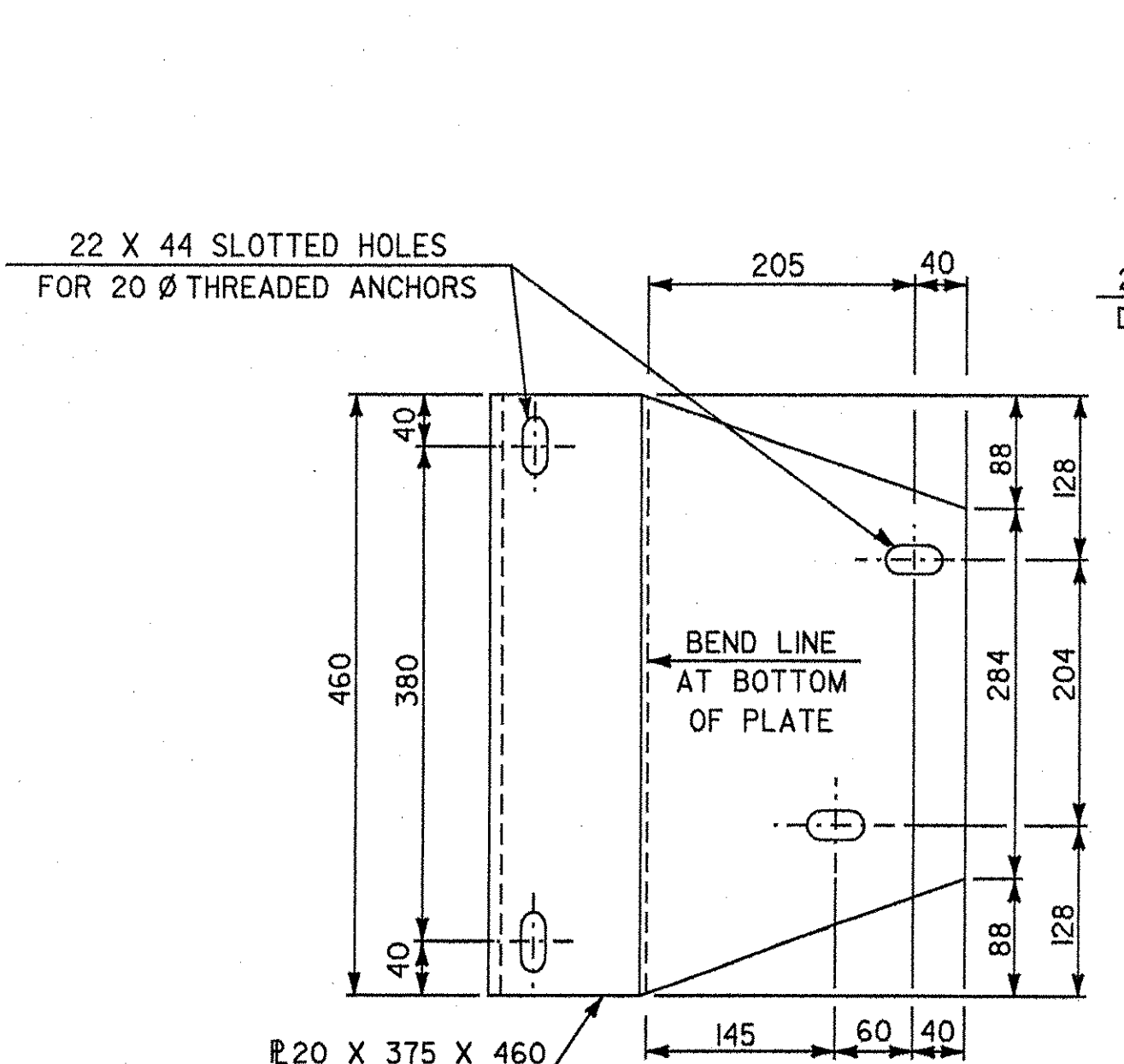


PLAN

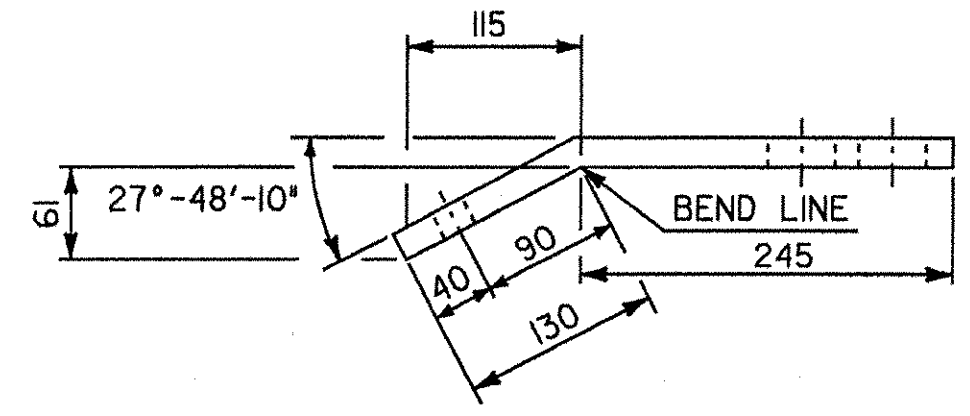


ELEVATION

BACKWALL SUPPORT ASSEMBLY PLATE DETAIL
SCALE IN MILLIMETERS

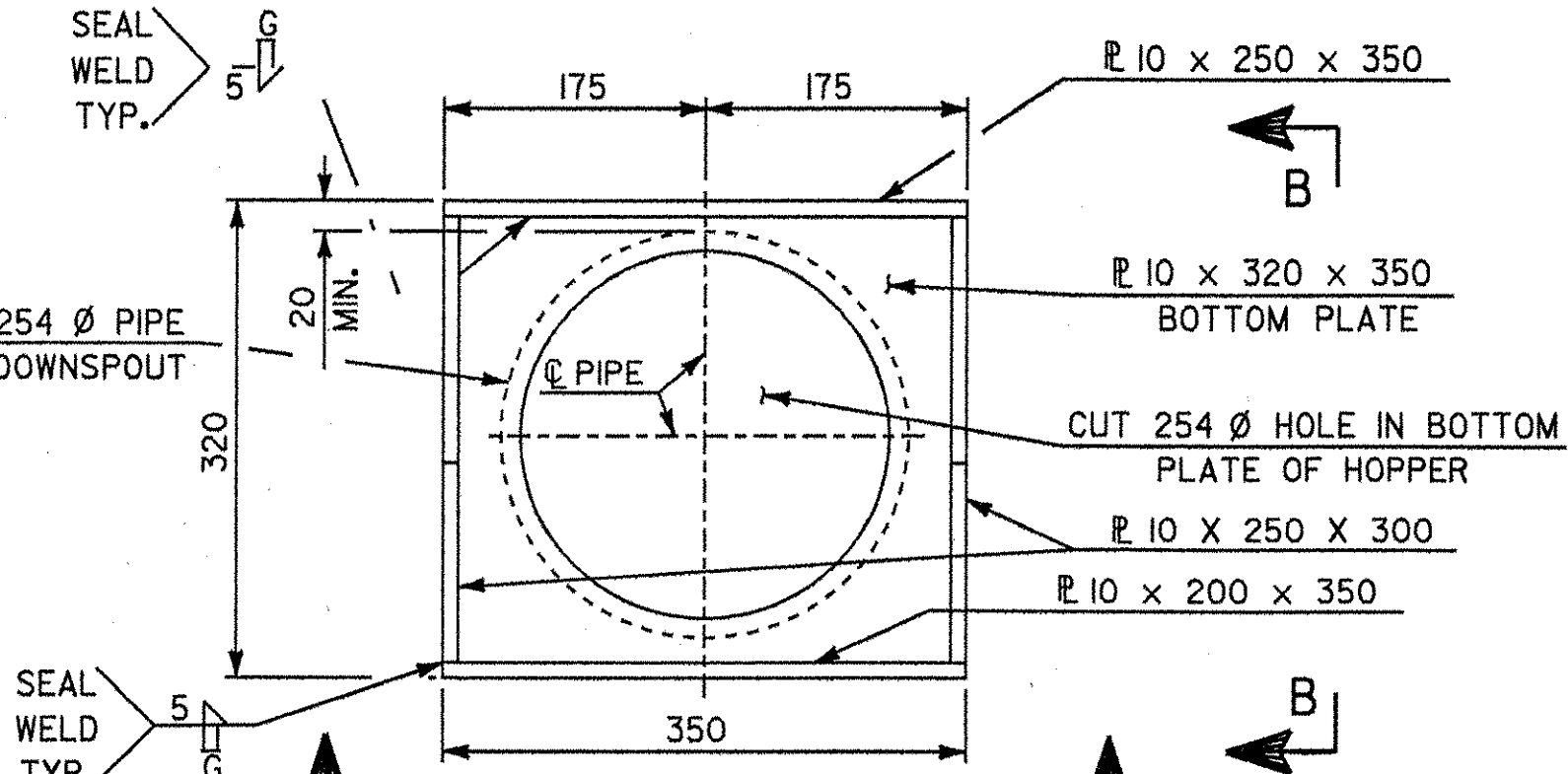


PLAN

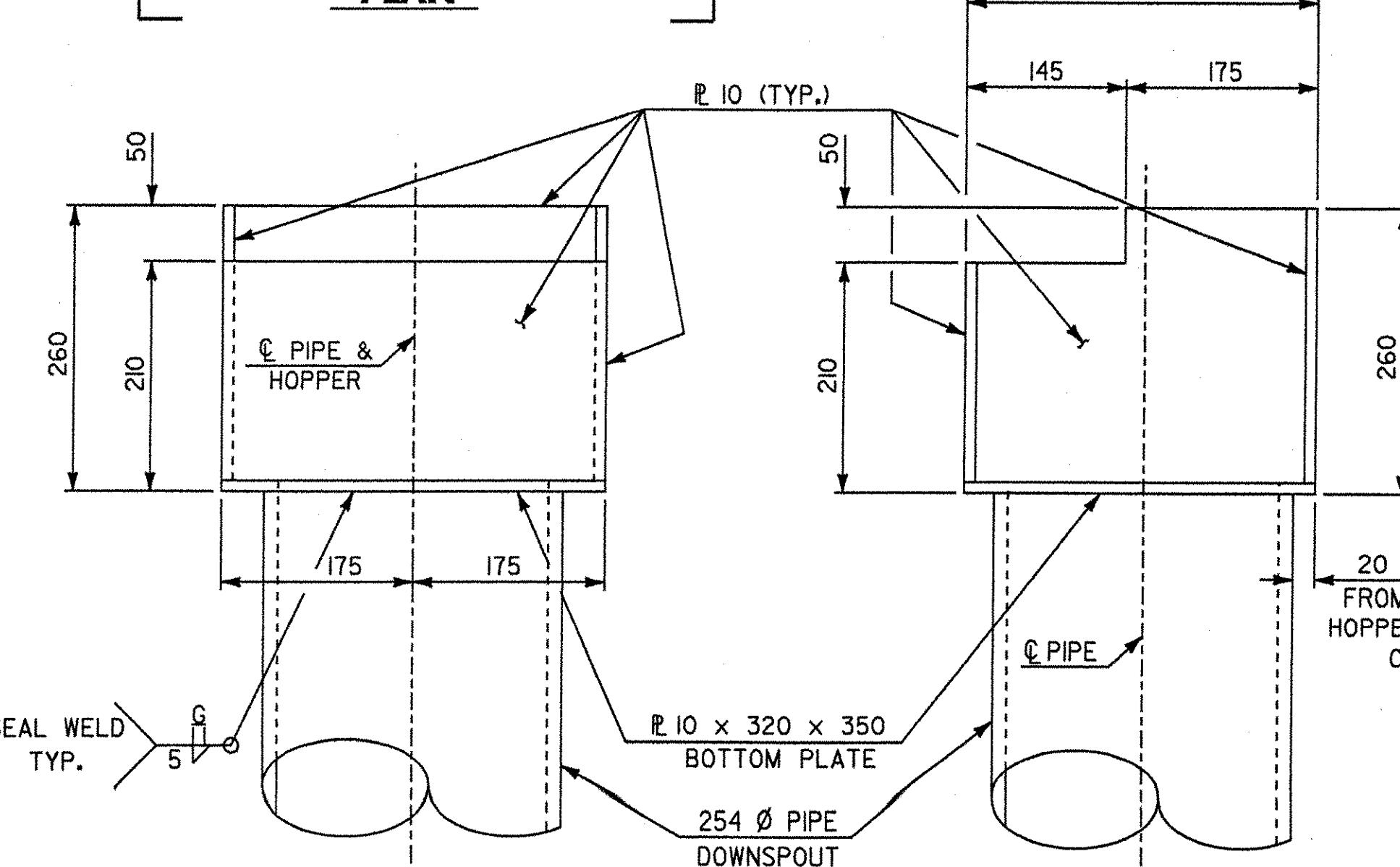


ELEVATION

ABUTMENT DOWNSPOUT SUPPORT PLATE DETAIL
SCALE IN MILLIMETERS



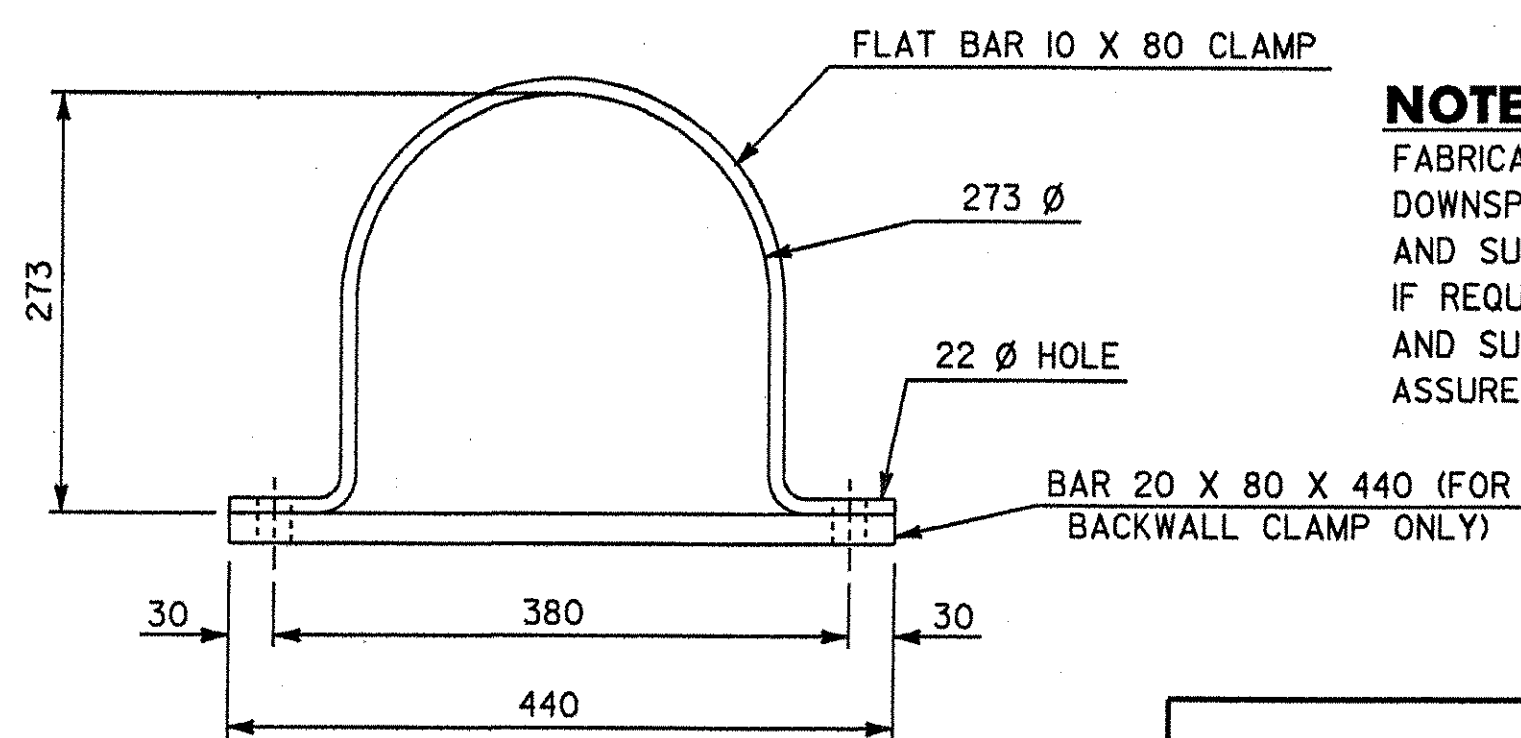
PLAN



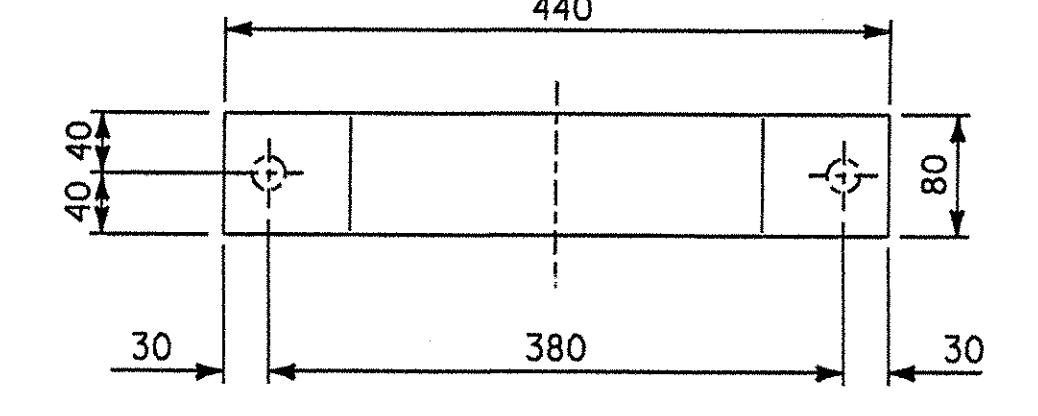
ELEVATION A-A

ELEVATION B-B

HOPPER AND DOWNSPOUT ASSEMBLY DETAILS
SCALE IN MILLIMETERS



ELEVATION



PLAN

CLAMP DETAILS
SCALE IN MILLIMETERS

EXPANSION JOINT NOTES

1. THE FINAL FINISH OF THE EXPANSION JOINT SHALL BE COVERED DURING THE PLACING OF THE BRIDGE DECK CONCRETE.
2. ALL STEEL COMPONENTS SHALL BE AASHTO M270M GR 250 MPa GALVANIZED OR METALIZED AS PER SUBSECTION 506.15 (b) OR (c), UNLESS OTHERWISE NOTED. PAYMENT FOR THE CURB EXPANSION PLATE ASSEMBLY, COMPLETE IN PLACE, SHALL BE UNDER BRIDGE EXPANSION JOINT, ITEM 516.10, TOTAL MOVEMENT 30.
3. THE ITEM 'BRIDGE EXPANSION JOINT' SHALL INCLUDE THE FABRICATION AND ERECTION OF THE COMPLETE JOINT ASSEMBLY INCLUDING ALL STEEL PLATES, BRACKETS, ANGLES, WELDED STUDS OR RODS, PREFORMED FABRIC DRAIN TROUGH MATERIAL AND PLASTIC DRAIN TUBES, BUTYL RUBBER TAPE AND ANY OTHER MISCELLANEOUS MATERIAL NECESSARY TO INSTALL JOINT.
4. THE FABRIC TROUGH SHALL BE CONTINUOUS PREFORMED FABRIC MATERIAL CONFORMING TO SECTION 707.07. THE HIGH END OF THE FABRIC TROUGH SHALL BE CLOSED BY FOLDING.
5. PAYMENT FOR THE DOWNSPOUT ASSEMBLY SHALL BE INCLUDED IN THE UNIT PRICE BID FOR BRIDGE EXPANSION JOINT, ITEM 516.10
6. WHERE INDICATED, EPOXY BONDING COMPOUND CONFORMING TO SECTION 719.02 SHALL BE APPLIED. PAYMENT TO BE INCLUDED IN UNIT PRICE BID FOR BRIDGE EXPANSION JOINT, ITEM 516.10
7. A 25 DIAMETER PLASTIC DRAIN TUBE SHALL BE INSTALLED AS SHOWN AT THE FACE OF CURB ON THE LOW SIDE. THE UPPER END IS TO BE PLUGGED WITH STEEL WOOL AND THE LOWER END IS TO EXTEND BELOW THE BOTTOM OF THE ADJACENT GIRDER. THE DRAIN TUBES SHALL BE FASTENED TO THE GIRDERS USING A METHOD APPROVED BY THE ENGINEER.
8. FILL COUNTERBORED HOLES IN THE JOINT PLATES WITH HOT POURED JOINT SEALER AFTER BOLT INSTALLATION. PAYMENT FOR THE WORK SHALL BE SUBSIDIARY TO BRIDGE EXPANSION JOINT, ITEM 516.10
9. PAYMENT FOR WATERSTOP SHALL BE SUBSIDIARY TO CONCRETE, HIGH PERFORMANCE CLASS B, ITEM 501.34.
10. FABRIC TROUGH SHALL BE THOROUGHLY CLEANED AND FLUSHED AFTER PAVING OPERATION.
11. THE EXPANSION JOINT SHALL BE SHOP ASSEMBLED AND SHIPPED AS ONE UNIT.
12. A DRIP BEAD OF 13 WIDE X 228 LONG OF PREFORMED FABRIC MATERIAL, SHALL BE CEMENTED TO THE BOTTOM OF THE FABRIC TROUGH WITH AN ADHESIVE APPROVED BY THE FABRIC MANUFACTURER. THE DRIP BEAD SHALL BE APPLIED 25 FROM THE HOPPER END OF THE FABRIC TROUGH.
13. 32 X 140 BARS SHALL BE FURNISHED IN 2 EQUAL LENGTH PIECES EACH SIDE OF JOINT.
14. THE 32 X 140 BARS SHALL BE REMOVED AFTER CONCRETE IS POURED. THE FABRIC TROUGH SHALL THEN BE THOROUGHLY CLEANED AND THIS SURFACE IS TO BE SEALED FULL LENGTH OF THE JOINT WITH BUTYL RUBBERTAPE. THE COST IS TO BE SUBSIDIARY TO THE BRIDGE EXPANSION JOINT, ITEM 516.10.
15. THE L 203 X 102 X 12.7 SHALL BE FURNISHED IN ONE CONTINUOUS PIECE.

NOTE:
FABRICATOR SHALL VERIFY OUTSIDE DIAMETER OF DOWNSPOUT PIPE PRIOR TO FABRICATION OF CLAMP AND SUPPORT PLATE, AND ADJUST DIMENSIONS SHOWN IF REQUIRED. FABRICATOR SHALL SHOP FIT CLAMP AND SUPPORT PLATE TO DOWNSPOUT PIPE TO ASSURE PROPER FIT IN THE FIELD.

STATE OF VERMONT AGENCY OF TRANSPORTATION

| | | | |
|---|--------------|--------------------------|-----------------|
| Town Of | HARTLAND | Bridge No. | 60 |
| Highway No. | U.S. ROUTE 5 | Log Sta. | |
| | | Surv. Sta. | |
| U.S. ROUTE 5 OVER LULLS BROOK | | | |
| EXPANSION JOINT DETAILS AT ABUT. NO. 2 | | | |
| Designed By | S. BAKI | Drawn By | W. GAYNOR |
| Checked By | S. BAKI | Bridge Design Supervisor | J. MECZKOWSKI |
| PROJECT | HARTLAND | PROJECT NO. | BR5 No. 013(22) |
| I.G.C. Info. M:\45620\VAOT Hartland\struct\zf204jdt.dgn | | | |
| Bridge Sheet No. | BR19 | Sheet | 54 of 86 |