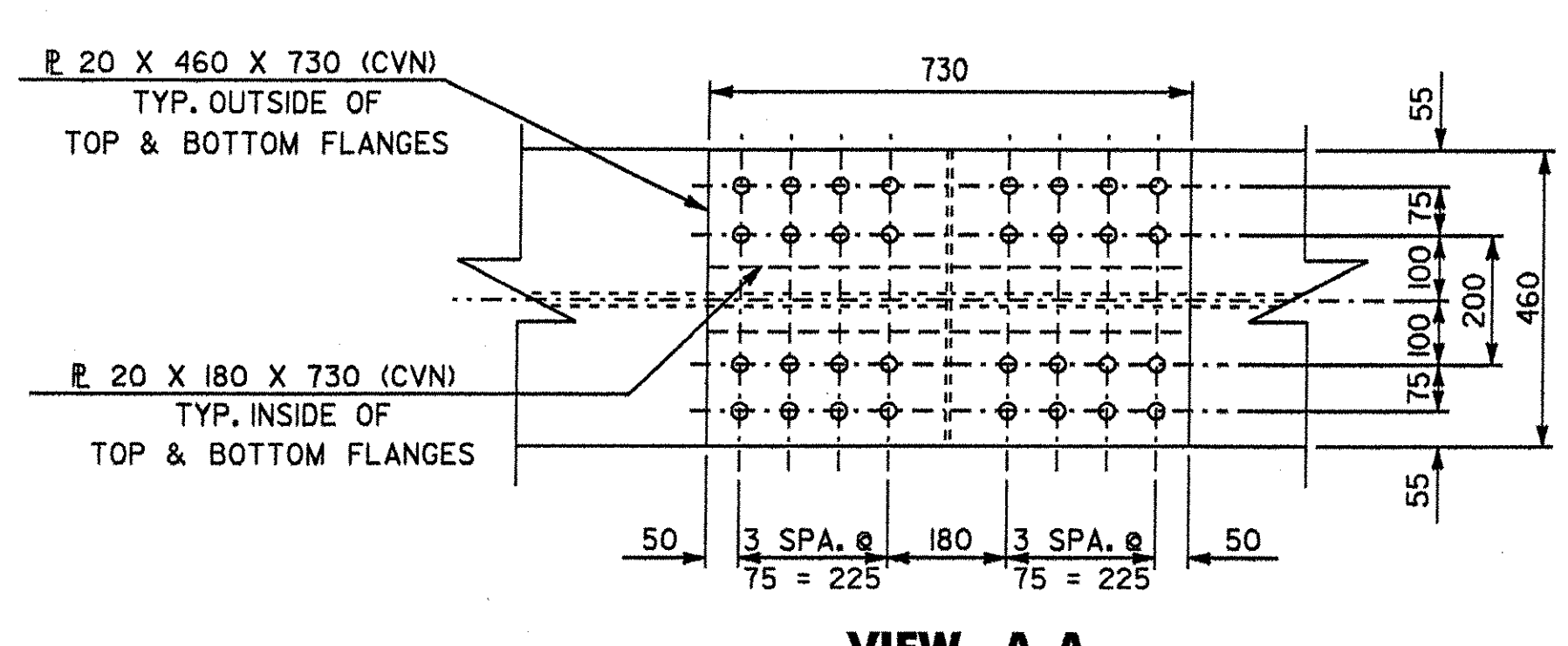
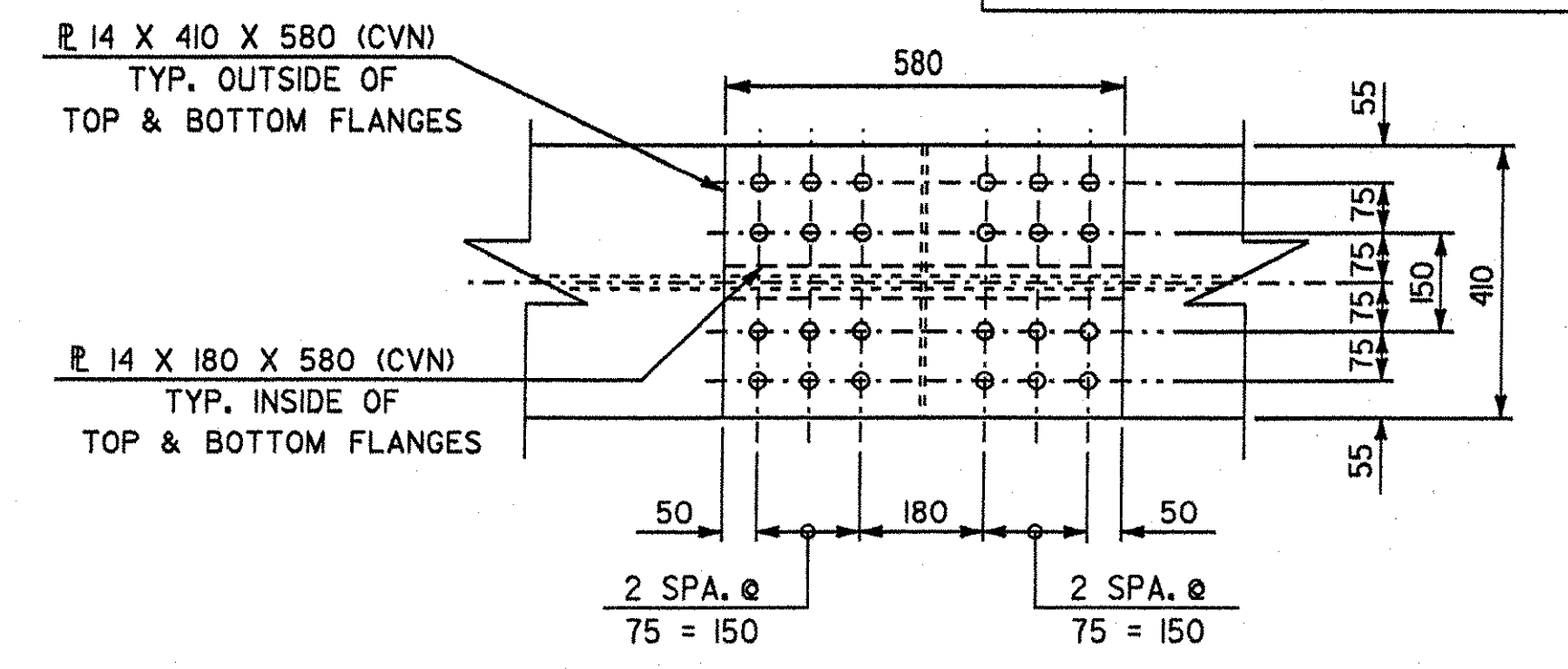


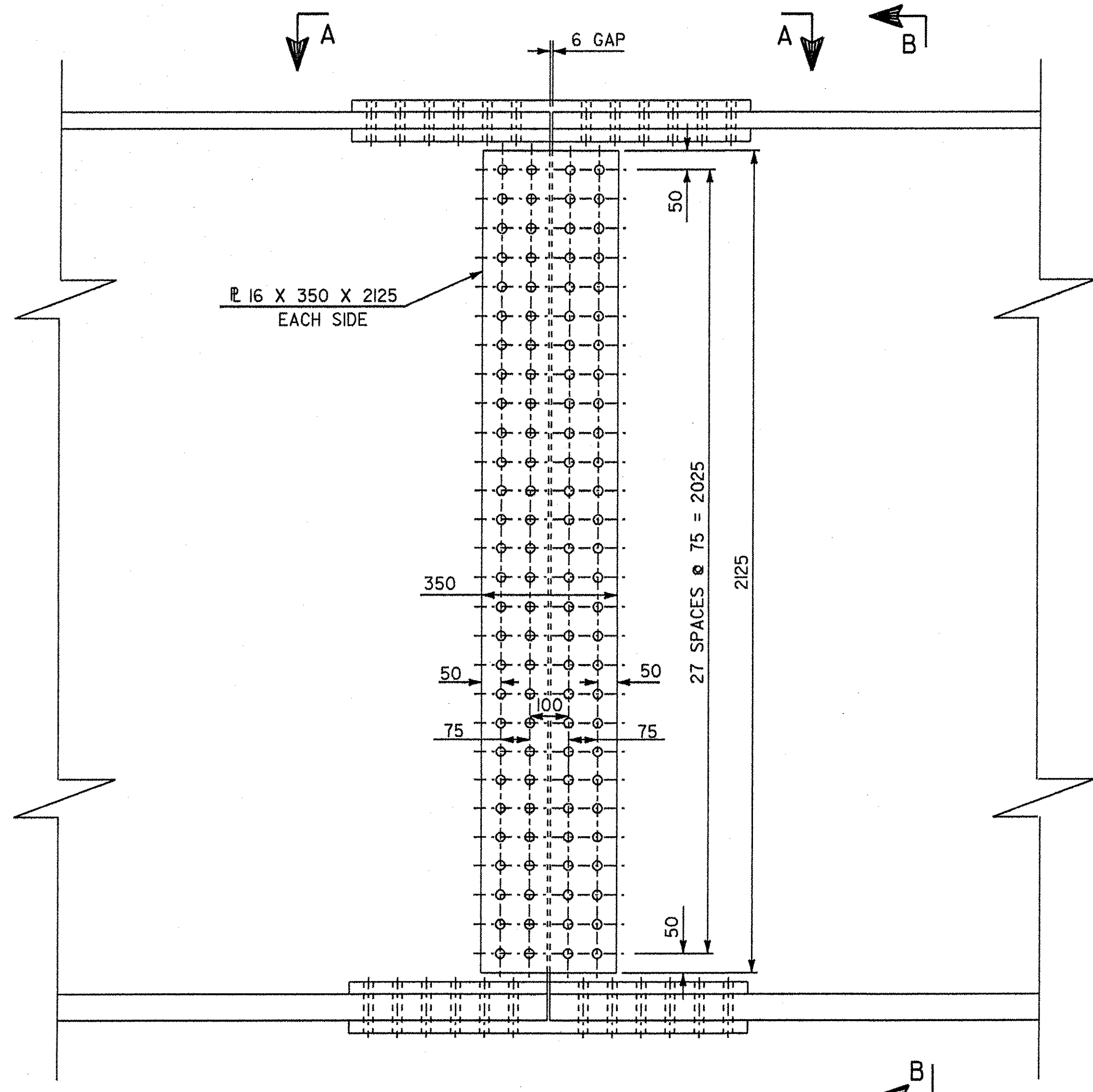
**VIEW A-A
GIRDER G1 & G2**
SCALE IN MILLIMETERS



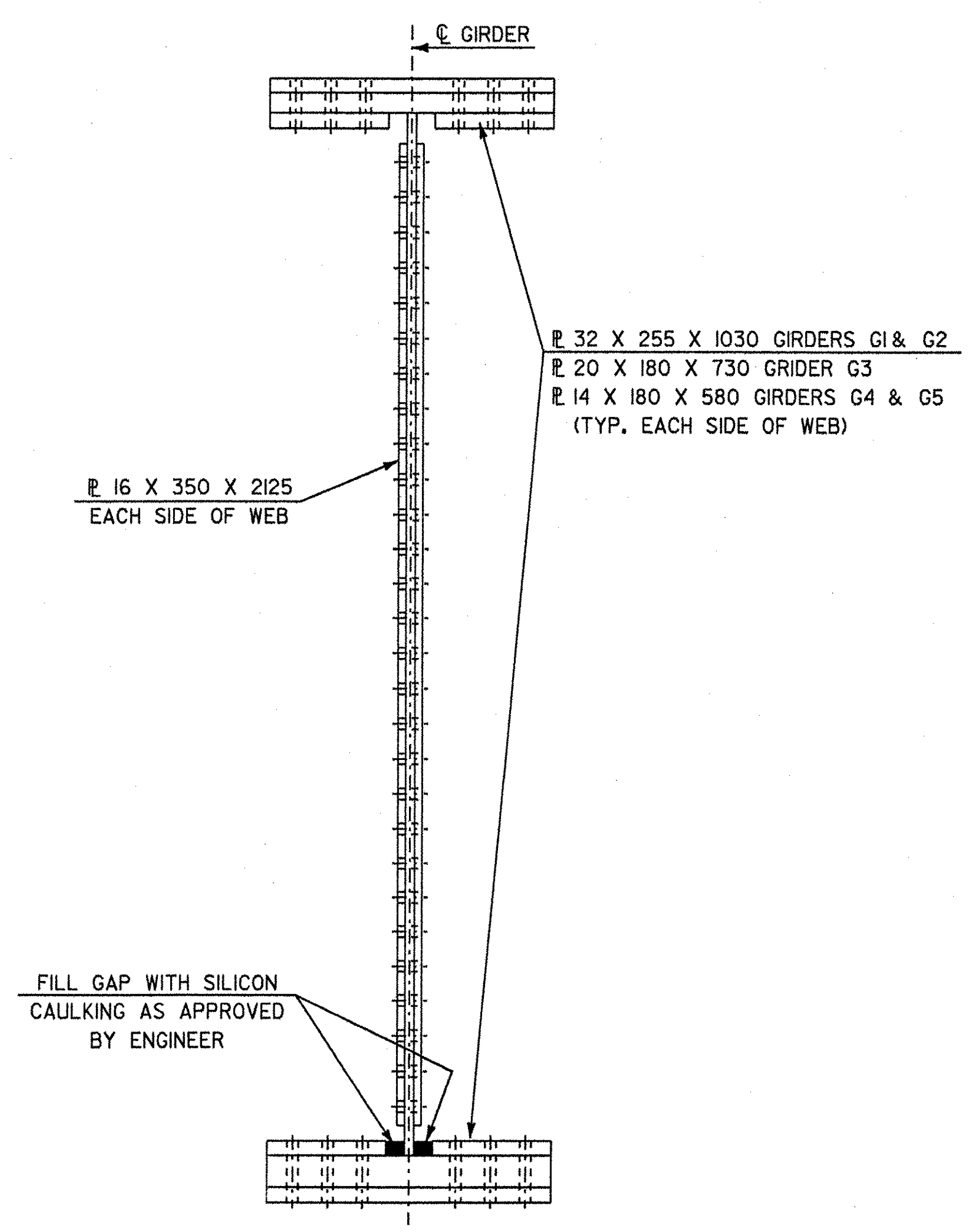
**VIEW A-A
GIRDER G3**
SCALE IN MILLIMETERS



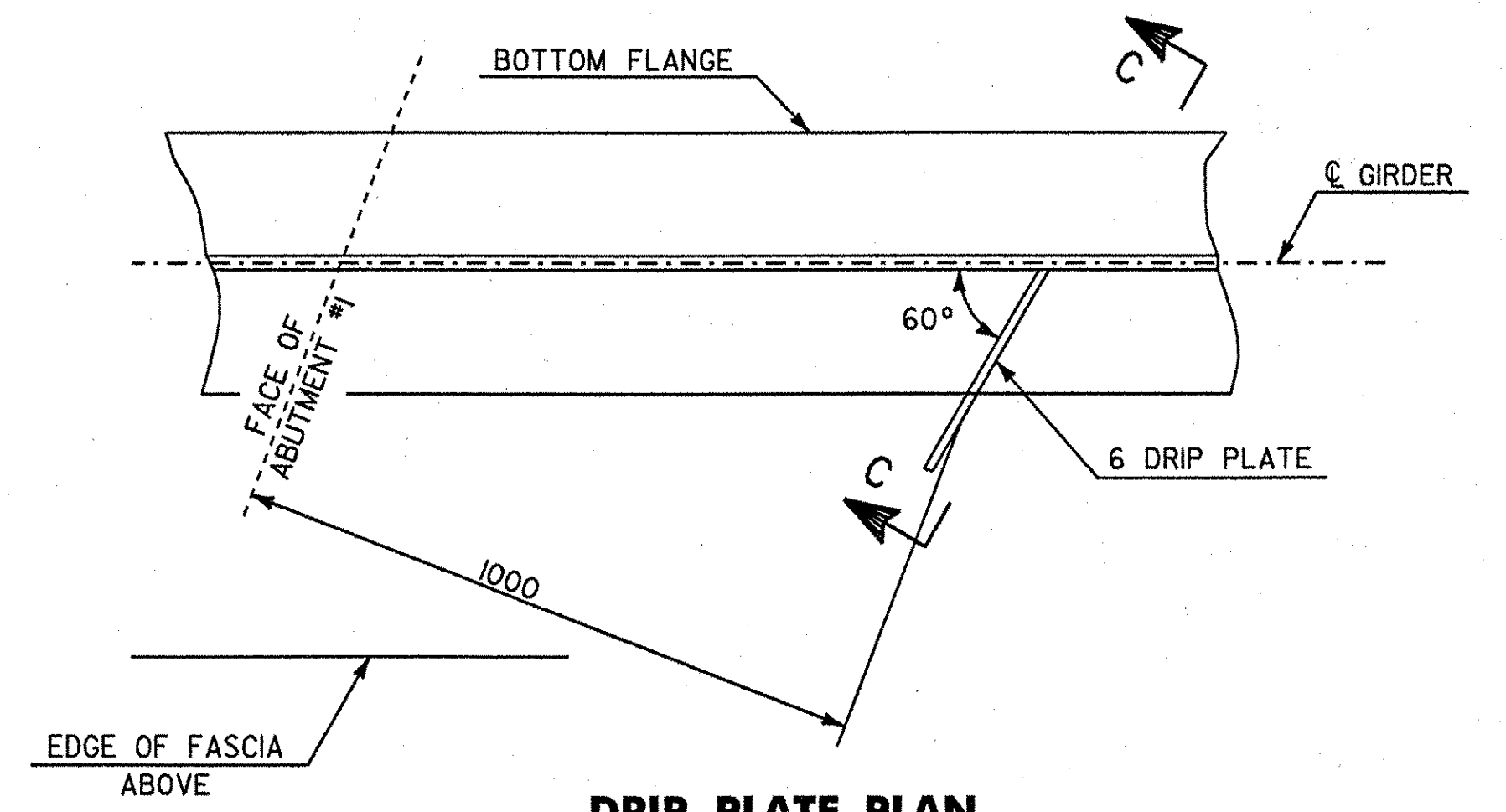
**VIEW A-A
GIRDER G4 & G5**
SCALE IN MILLIMETERS



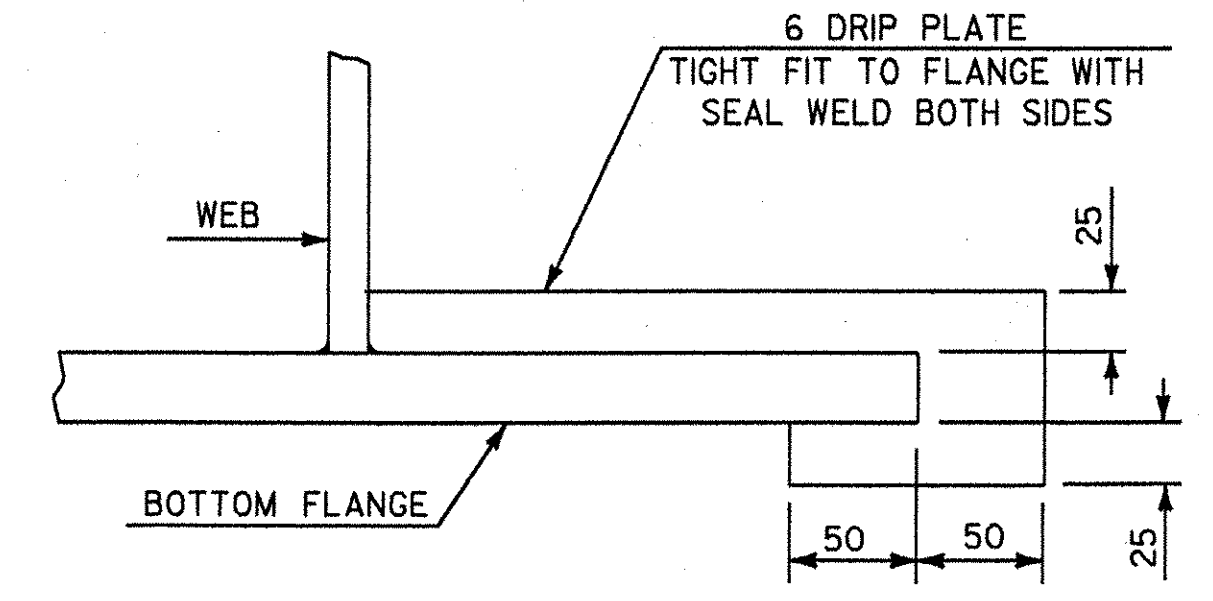
ELEVATION



SECTION B-B

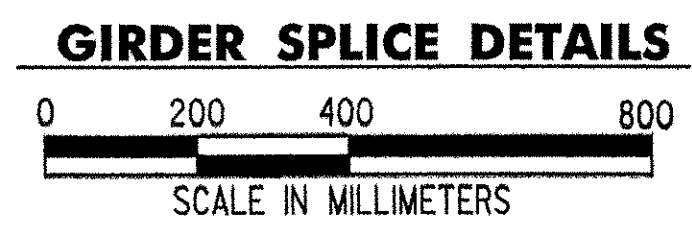


DRIP PLATE PLAN
SCALE IN MILLIMETERS



VIEW C-C
NOT TO SCALE

- FIELD SPLICE NOTES**
1. WEB SPLICES ARE THE SAME FOR GIRDERS G1 THRU G5.
 2. ALL SPLICE CONNECTIONS SHALL BE MADE USING 22 Ø AASHTO M164 BOLTS IN 25 Ø HOLES.
 3. CVN = CHARPY V - NOTCH TESTING REQUIRED
 4. CONNECTION DETAILS FOR BOLTED FIELD SPLICE SHALL HAVE A CLASS 'B' SURFACE CONDITION WITH BOLT THREADS PRECLUDED FROM THE SHEAR PLANE.



NOTE:
GIRDER SPLICE ELEVATION AND SECTION B-B ARE SHOWN FOR GIRDERS G1 AND G2, ELEVATION AND SECTION B-B FOR GIRDERS G3, G4 AND G5 ARE SIMILAR.

NOTE:
DRIP PLATES SHALL BE PLACED ON OUTSIDE EDGE OF FASCIA GIRDERS. SEE FRAMING PLAN ON SHEET BR11 FOR LOCATIONS.

| | | |
|--|--------------|--------------------------|
| STATE OF VERMONT AGENCY OF TRANSPORTATION | | |
| Town Of | HARTLAND | Bridge No. 60 |
| Highway No. | U.S. ROUTE 5 | Log Sta. |
| | | Surv. Sta. |
| U.S. ROUTE 5 OVER LULLS BROOK | | |
| GIRDER SPLICE DETAILS | | |
| Designed By | S. BAKI | Drawn By B. TYLER |
| Checked By | Date | Bridge Design Supervisor |
| | S. BAKI | J. MIECZKOWSKI Date |
| PROJECT | HARTLAND | PROJECT NO. |
| | | BRS No. 0113(22) |
| I.G.C. Info. M:\145620\VAOT_Hartland\struct\zf204sdt.dgn | | |
| Bridge Sheet No. BR114 | | Sheet 49 of 86 |