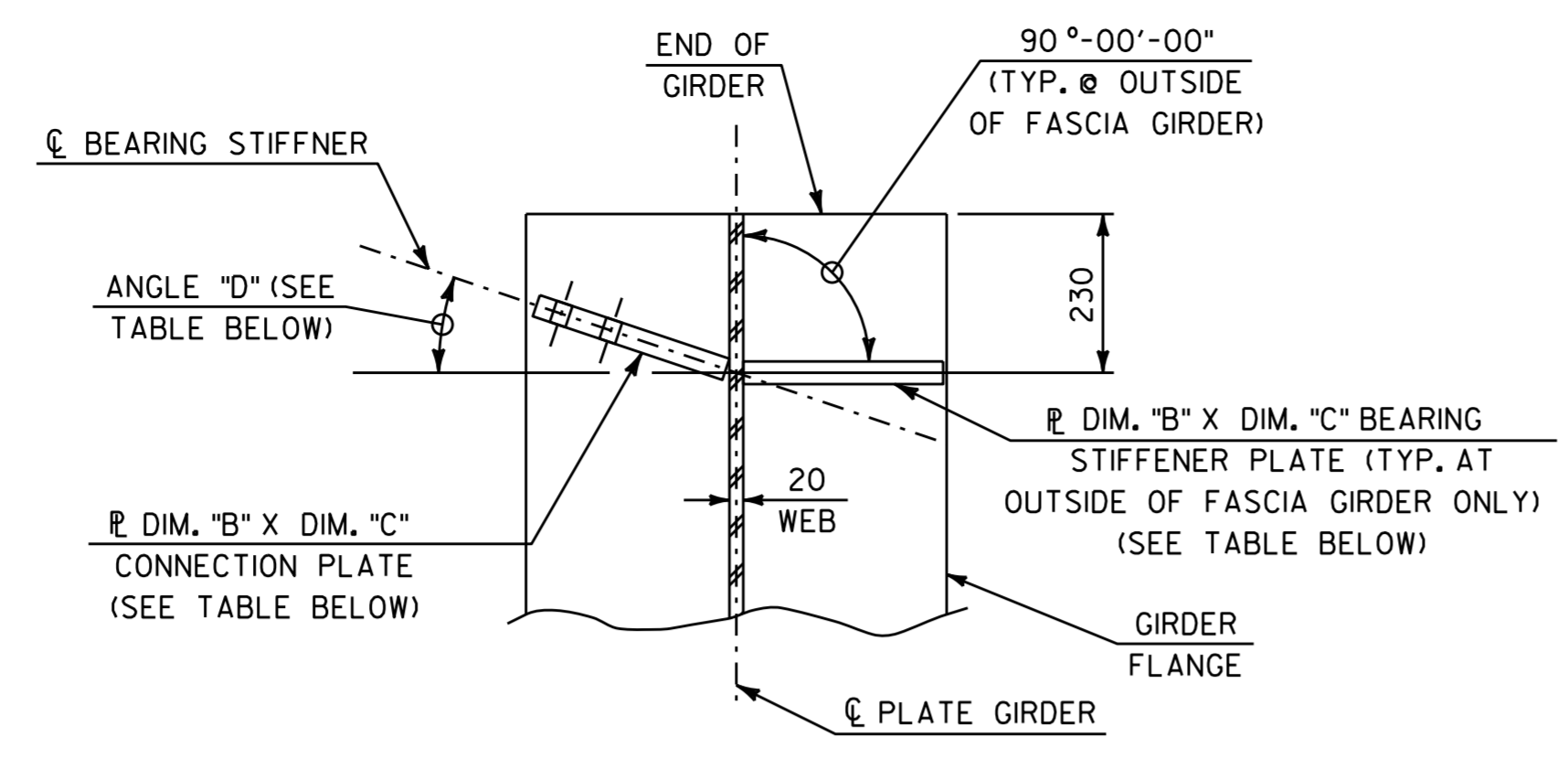


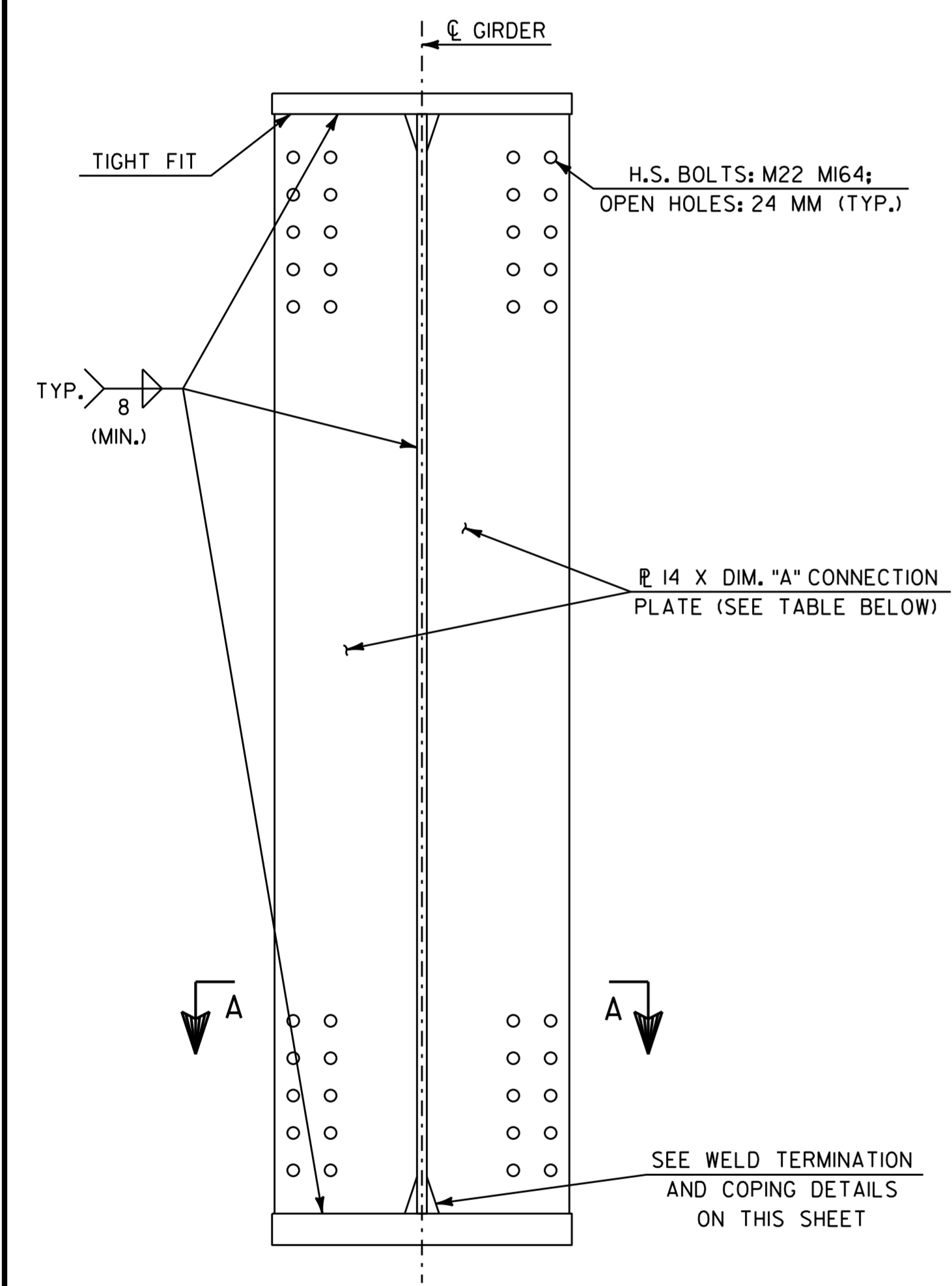
**SECTION A-A**



NOTE: NO CONNECTION PLATE AT OUTSIDE OF FASCIA GIRDER.



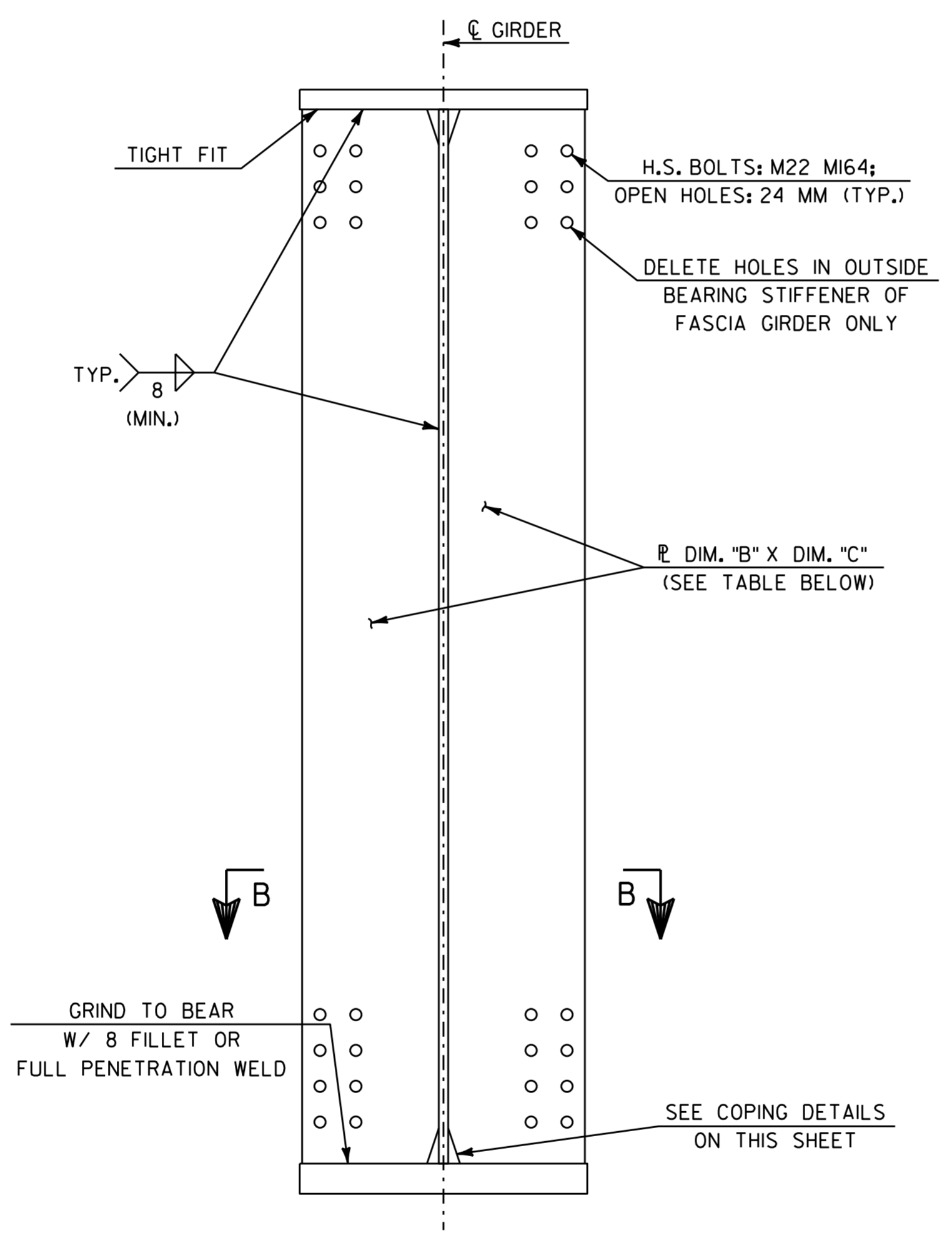
**SECTION B-B**



**INTERMEDIATE CROSS FRAME CONNECTION PLATE DETAIL**



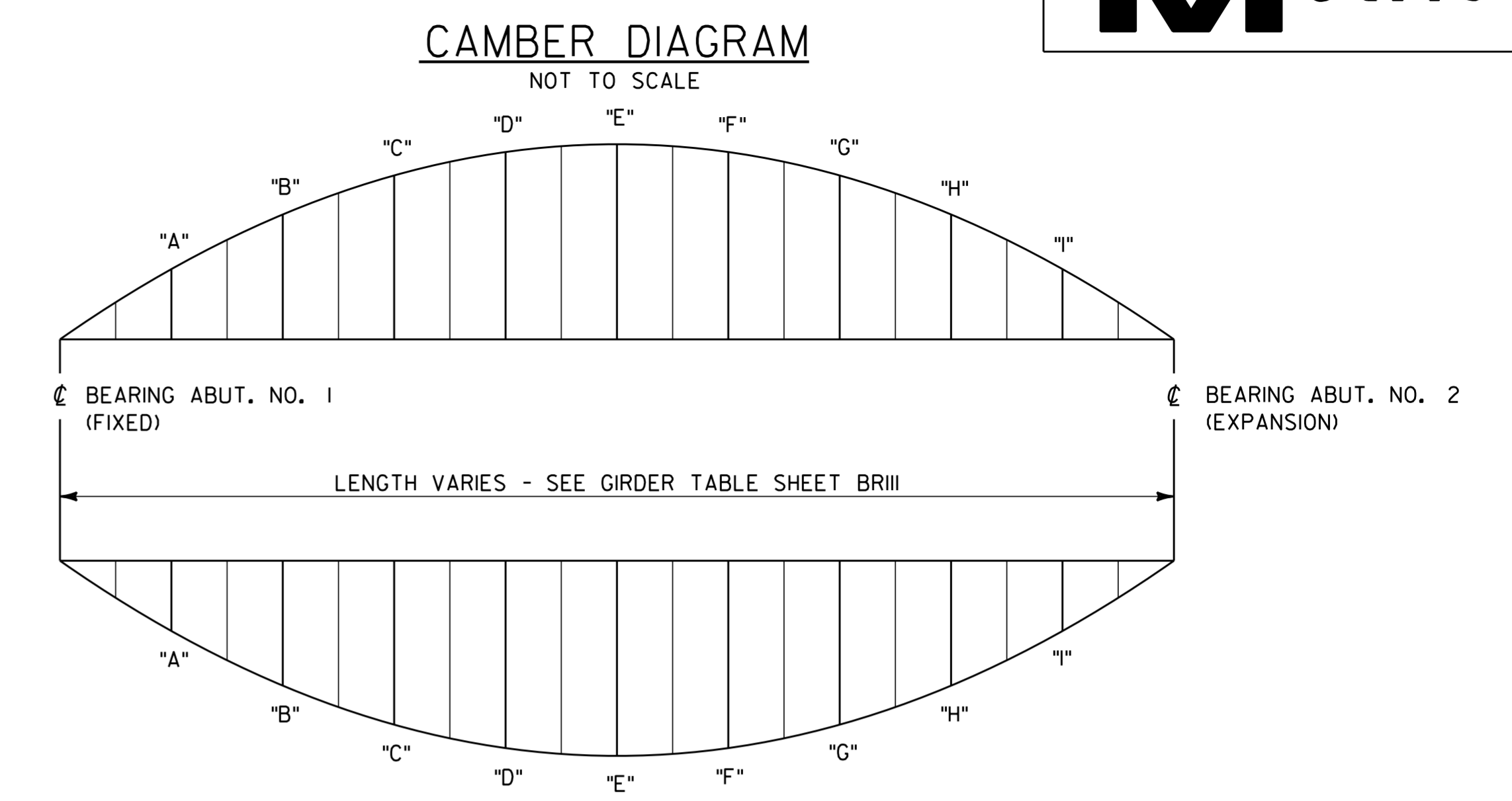
GIRDER	DIMENSION "A"
G1	290
G2	290
G3	215
G4	190
G5	190



**ABUTMENT CROSS FRAME BEARING STIFFENER AND CONNECTION PLATE DETAIL**



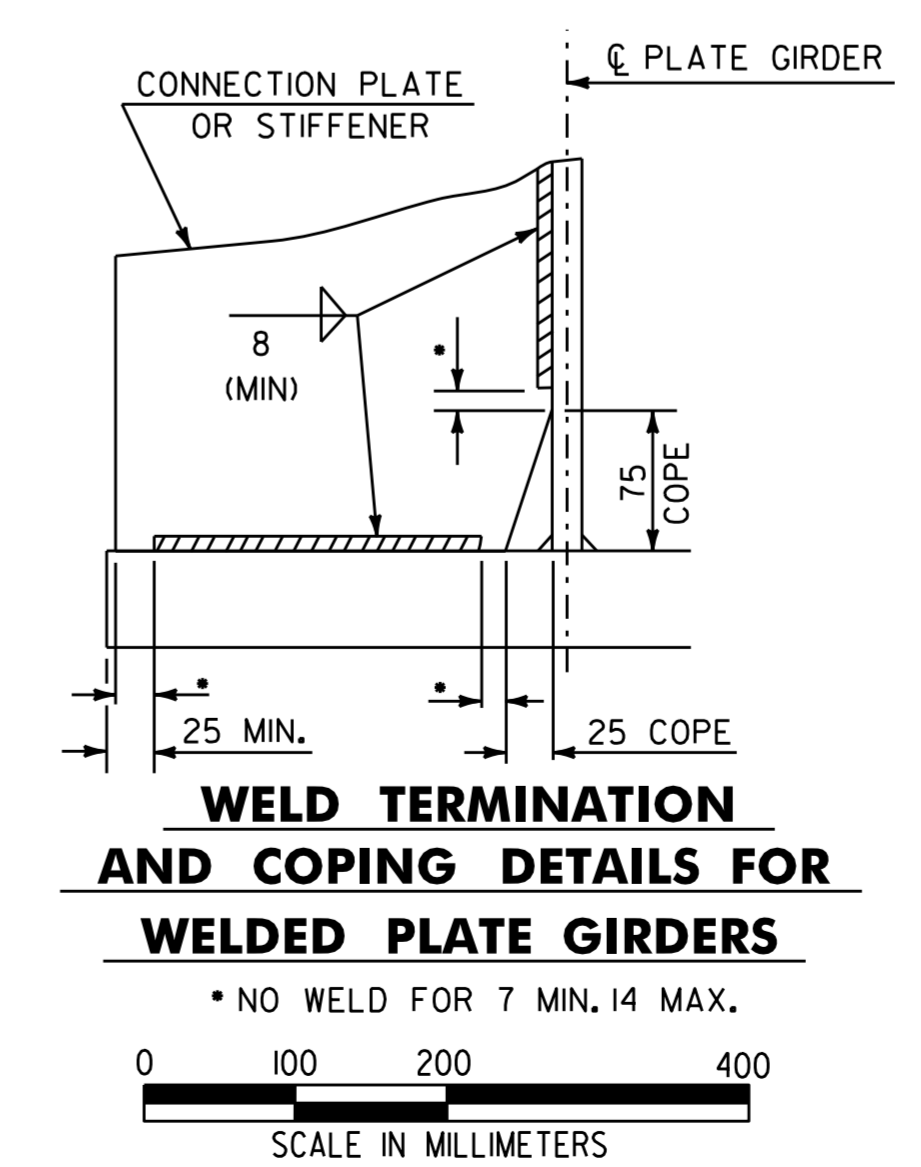
GIRDER NO.	TABLE OF BEARING STIFFENER & CONNECTION PLATE DIMENSIONS		ABUTMENT #1		ABUTMENT #2	
	DIMENSION "B"	DIMENSION "C"	ANGLE "D"	ANGLE "D"	ANGLE "D"	ANGLE "D"
G1	32	290	19°-00'-15.8"	14°-15'-57.6"		
G2	32	290	19°-29'-21.2"	14°-37'-25.3"		
G3	25	215	20°-00'-00.0"	15°-00'-00.0"		
G4	22	190	20°-32'-20.2"	15°-23'-47.2"		
G5	22	190	21°-06'-30.5"	15°-48'-52.9"		



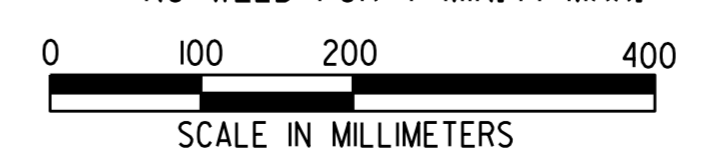
**DL DEFLECTION DIAGRAM**

NOT TO SCALE  
CAMBER AND DEFLECTION MEASUREMENTS ARE GIVEN IN MILLIMETERS AT TENTH POINTS

CAMBER AND DL DEFLECTION ORDINATE SCHEDULE												
L = TOTAL LENGTH @ BRG. ABUT. NO. 1 TO @ BRG. ABUT. NO. 2 (SEE GIRDER TABLE SHEET BR111)												
GIRDER NO.	@ BRG. ABUT. NO. 1	"A" 0.10L	"B" 0.20L	"C" 0.30L	"D" 0.40L	"E" 0.50L	"F" 0.60L	"G" 0.70L	"H" 0.80L	"I" 0.90L	@ BRG. ABUT. NO. 2	
1	CAMBER	0	57	105	142	165	173	165	142	105	57	0
	DL DEFLECTION	0	-40	-75	-103	-121	-127	-121	-103	-76	-41	0
2	CAMBER	0	50	91	123	144	151	144	123	91	50	0
	DL DEFLECTION	0	-33	-62	-85	-100	-106	-102	-88	-65	-35	0
3	CAMBER	0	41	78	106	124	131	124	106	78	41	0
	DL DEFLECTION	0	-26	-50	-69	-82	-87	-84	-73	-54	-29	0
4	CAMBER	0	36	68	92	107	113	107	92	68	36	0
	DL DEFLECTION	0	-21	-41	-56	-66	-70	-67	-58	-43	-23	0
5	CAMBER	0	33	60	80	92	96	92	80	60	33	0
	DL DEFLECTION	0	-17	-32	-44	-51	-53	-50	-42	-31	-16	0



**WELD TERMINATION AND COPING DETAILS FOR WELDED PLATE GIRDERS**



**STATE OF VERMONT AGENCY OF TRANSPORTATION**

Town Of HARTLAND Bridge No. 60  
 Highway No. U.S. ROUTE 5 Log Sta. Surv. Sta.  
 U.S. ROUTE 5 OVER LULLS BROOK

**MISC. GIRDER DETAILS**

Designed By S. BAKI Drawn By W. GAYNOR  
 Checked By S. BAKI Date Bridge Design Supervisor J. MIECZKOWSKI Date  
 PROJECT HARTLAND PROJECT NO. BRS No. 0113(22)  
 I.G.C. Info. M:\Projects\78f204\Construction\z7204cdt\_r1.dgn  
 Bridge Sheet No. BR113 Sheet 48 of 86