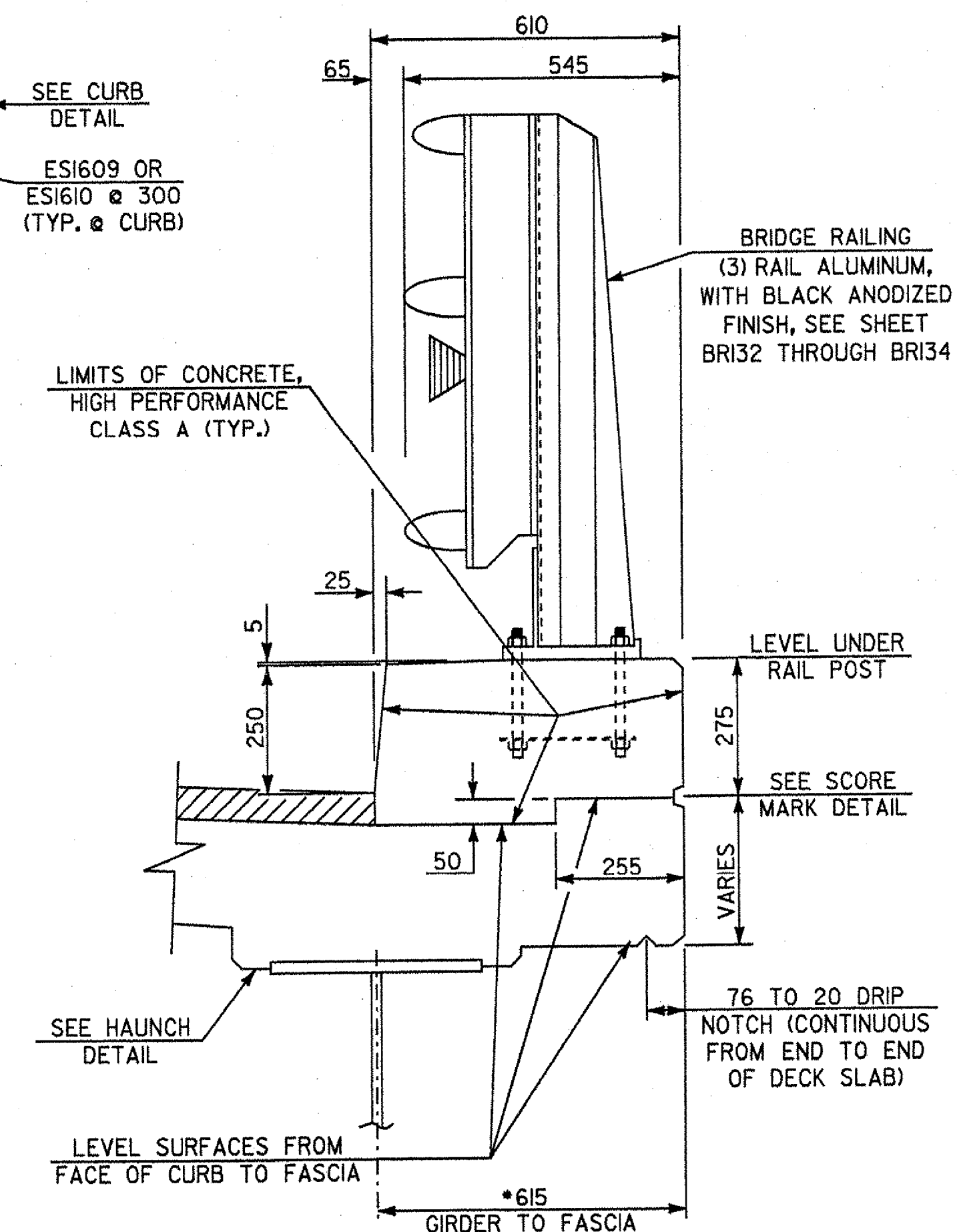


**TYPICAL BRIDGE SECTION**



\* DIMENSIONS ARE RADIAL.

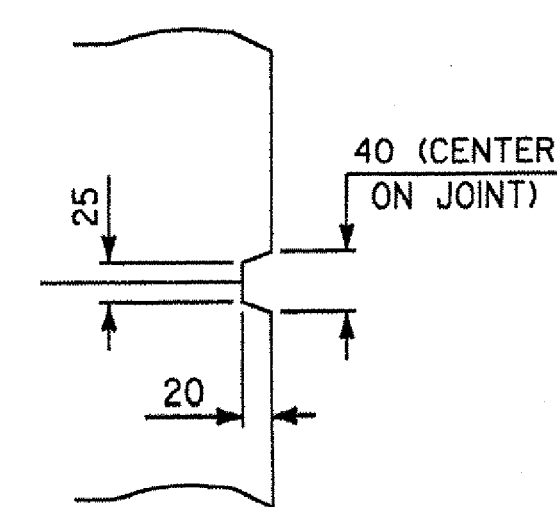


**CURB DETAIL**

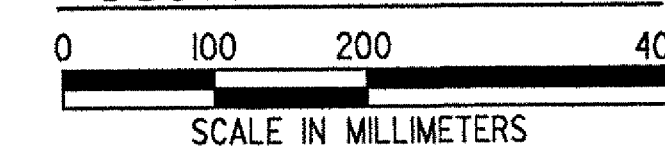


**NOTES:**

REINFORCING COVER 80 CLEAR AT FACES OF CURB AND AT EDGE OF DECK FASCIA. FOR DECK REINFORCING PLAN AND SECTIONS, SEE SHEET BR109.



**SCORE MARK DETAIL**



**STATE OF VERMONT  
AGENCY OF TRANSPORTATION**

Town Of	HARTLAND	Bridge No.	60
Highway No.	U.S. ROUTE 5	Log Sta.	
		Surv. Sta.	

U.S. ROUTE 5 OVER LULLS BROOK

**TYPICAL BRIDGE SECTION AND DETAILS**

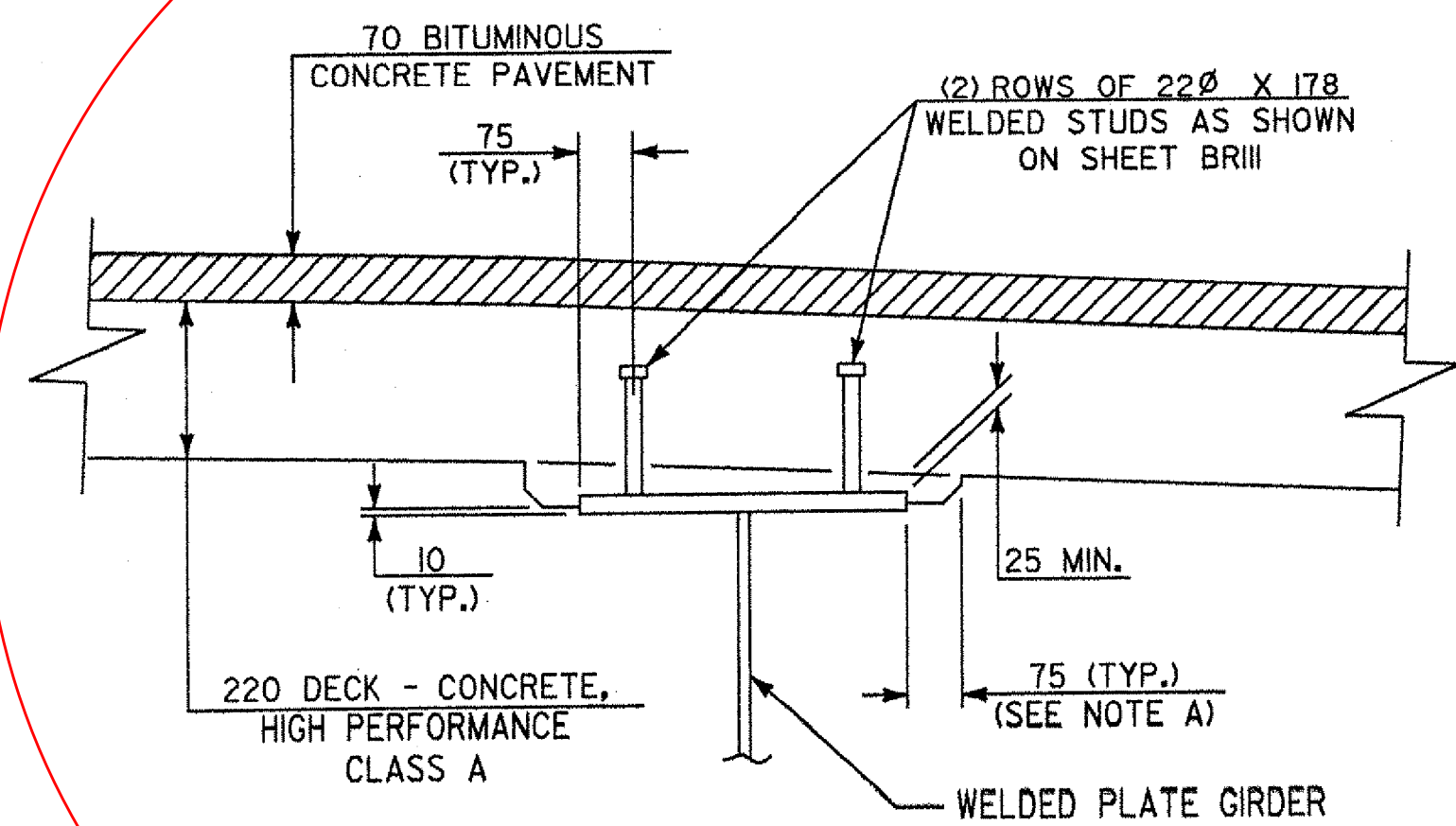
Designed By	S. BAKI	Drawn By	W. GAYNOR
Checked By	S. BAKI	Bridge Design Supervisor	J. MIECZKOWSKI
Date		Date	

PROJECT	HARTLAND	PROJECT NO.	BRS No. 0113(22)
---------	----------	-------------	------------------

I.G.C. Info. M:\145620\VA0T Hartland\struct\zf204dty.dgn  
 Bridge Sheet No. BR110 Sheet 45 of 86

REVISED AS PER MJ MEMO. SEE HALF SIZE SHEET FOR REVISED DETAIL.

**NOTE A:**  
 AS AN ALTERNATIVE HAUNCH FORMING SYSTEM, THE CONTRACTOR MAY ELIMINATE THE 75 mm HORIZONTAL SECTION, BUT ONLY WITH THE APPROVAL OF THE STRUCTURES ENGINEER.



**HAUNCH DETAIL**

