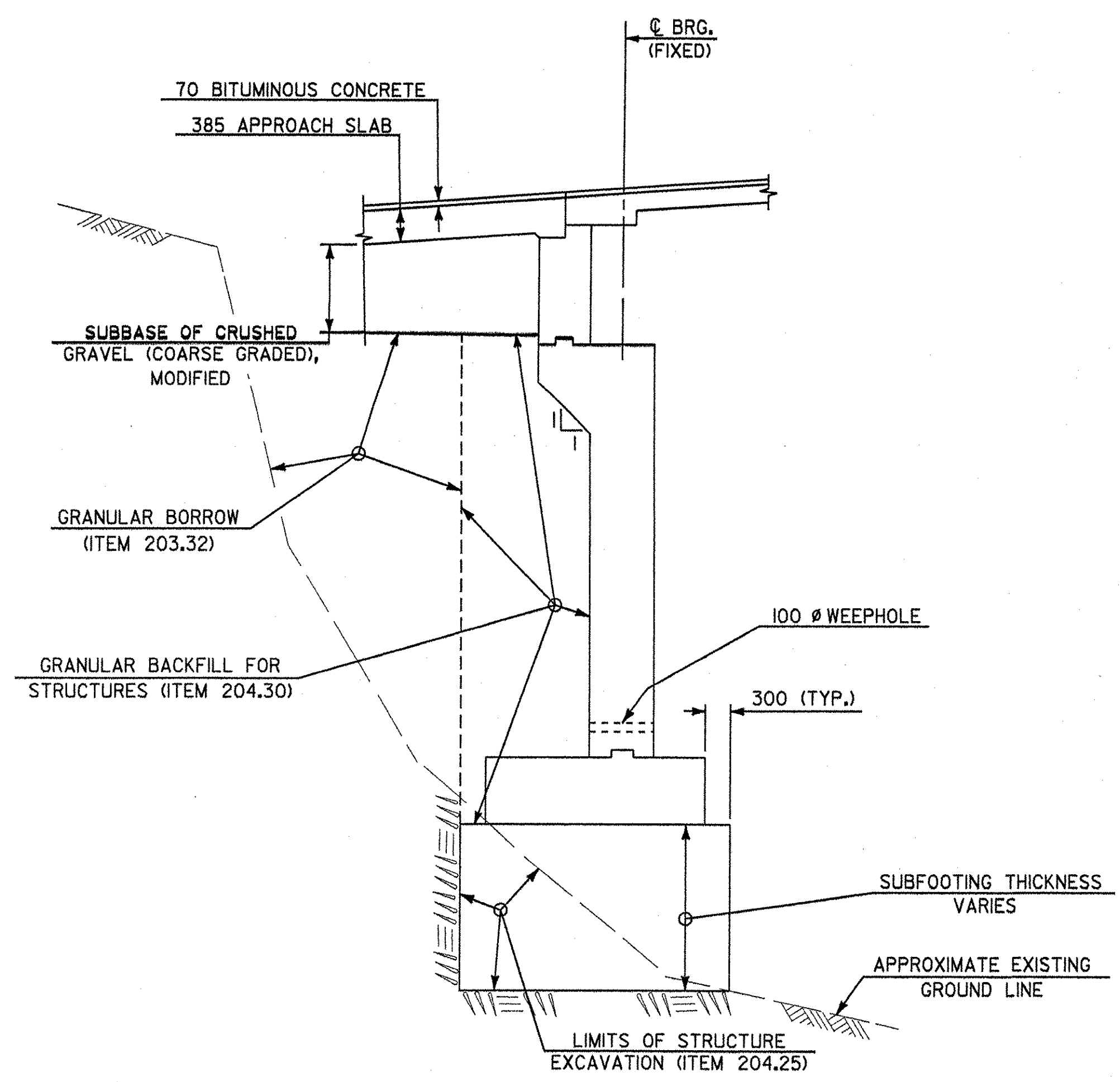
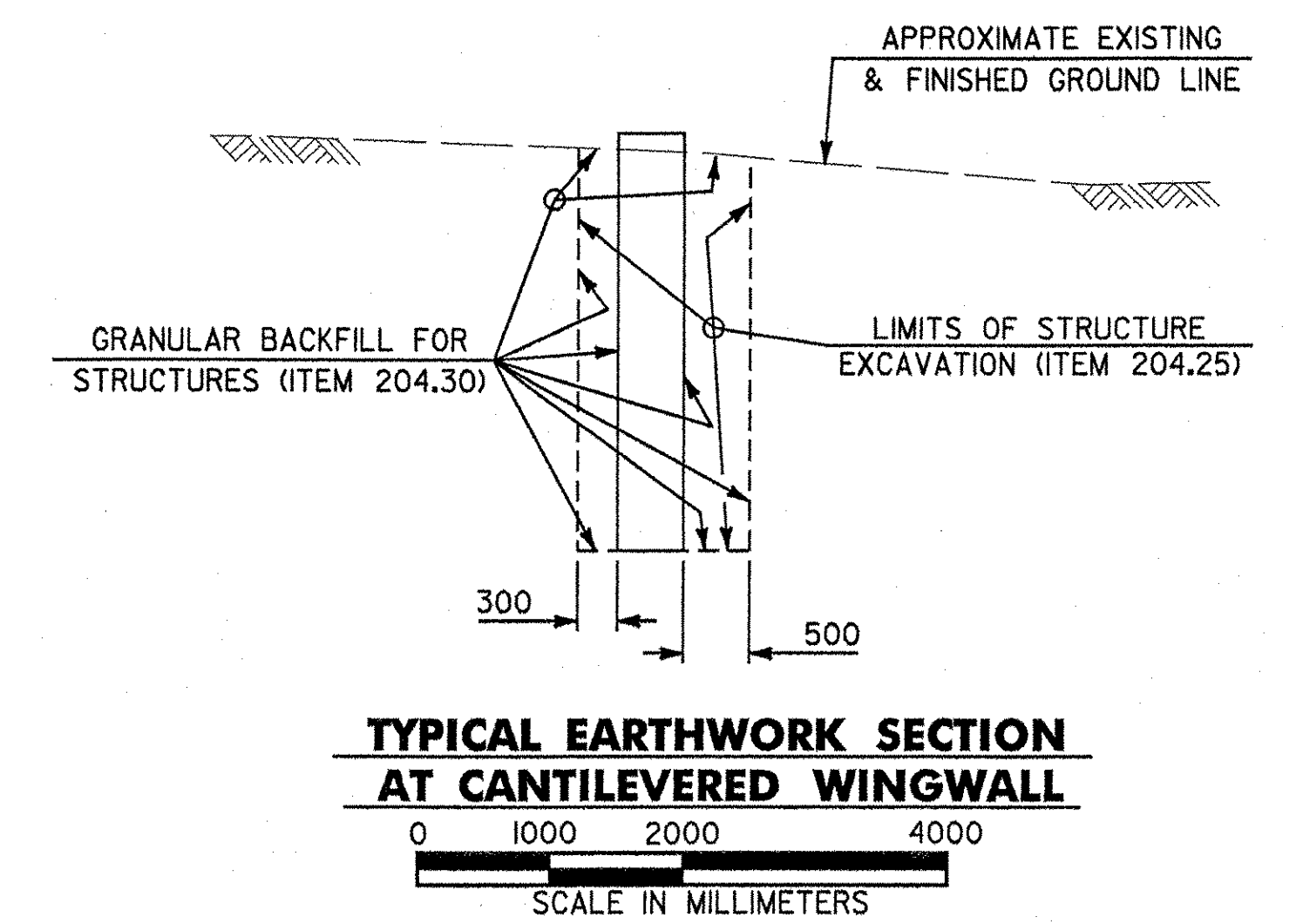


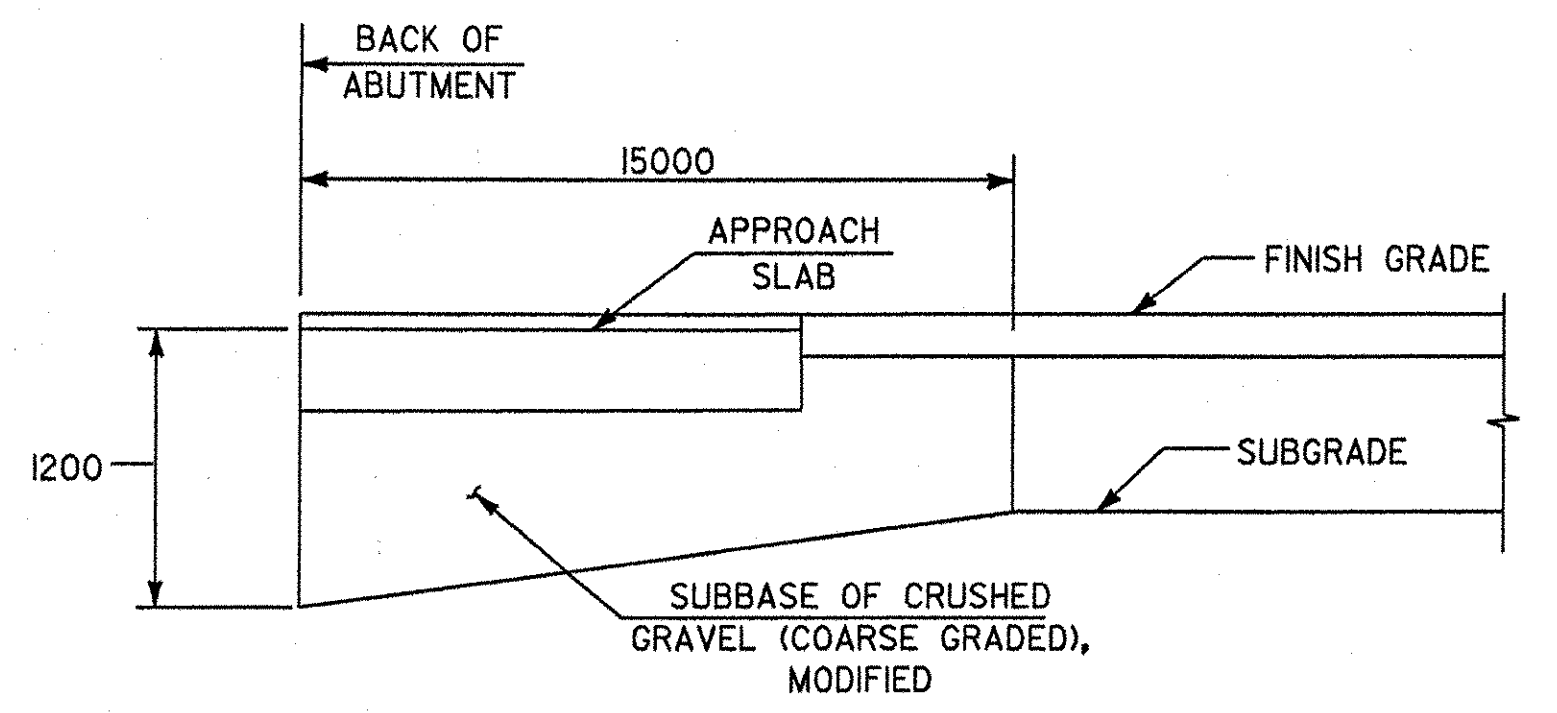
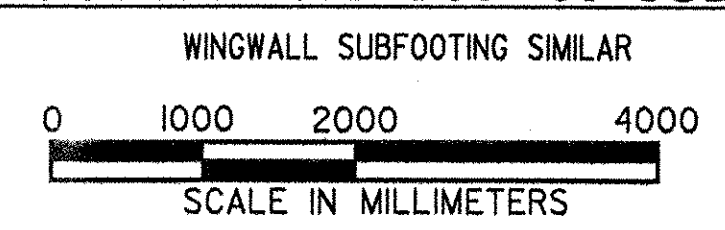
TYPICAL ABUTMENT EARTHWORK SECTION WITH FOOTING ON TOP OF ROCK



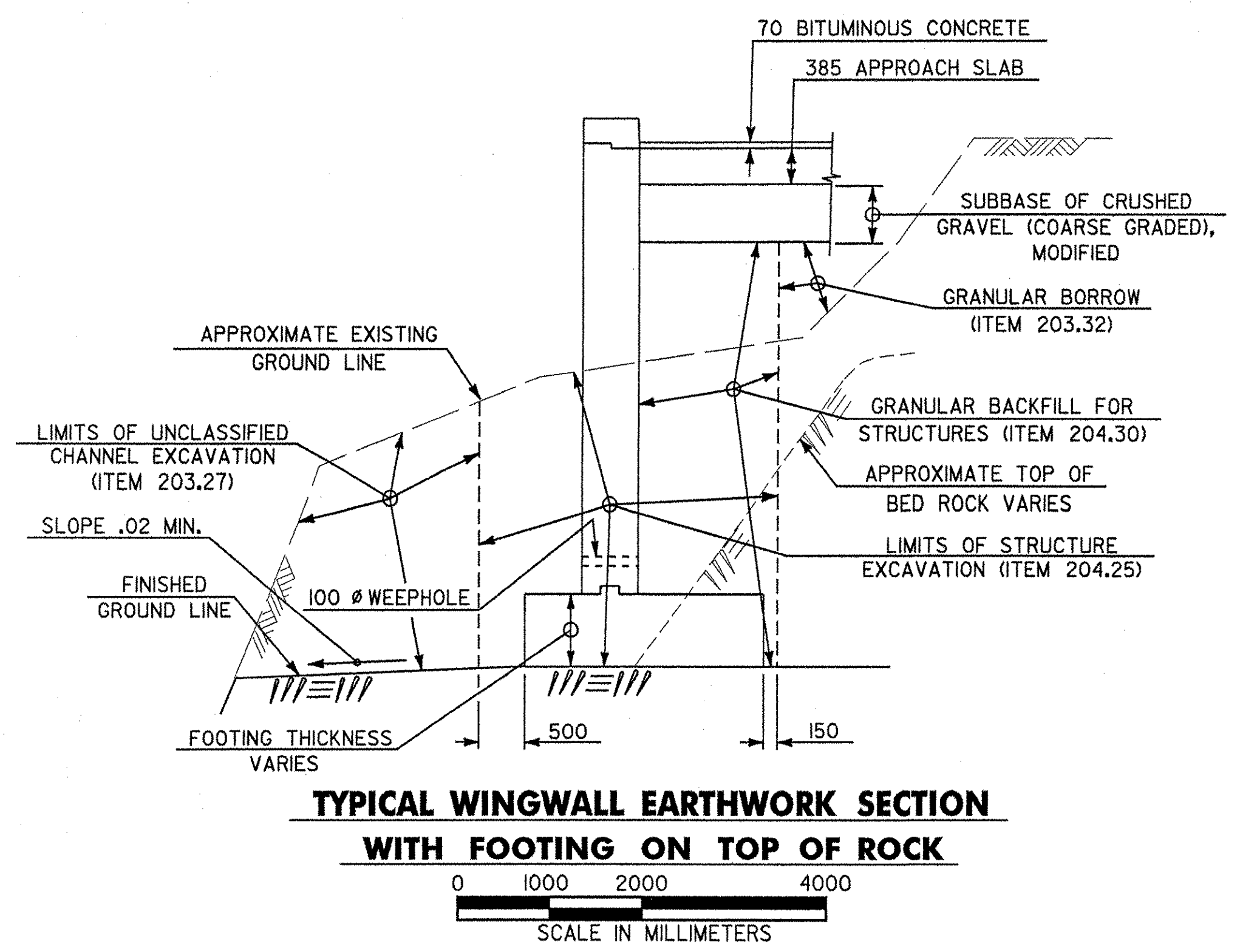
TYPICAL ABUTMENT EARTHWORK SECTION WITH FOOTING ON TOP OF SUBFOOTING



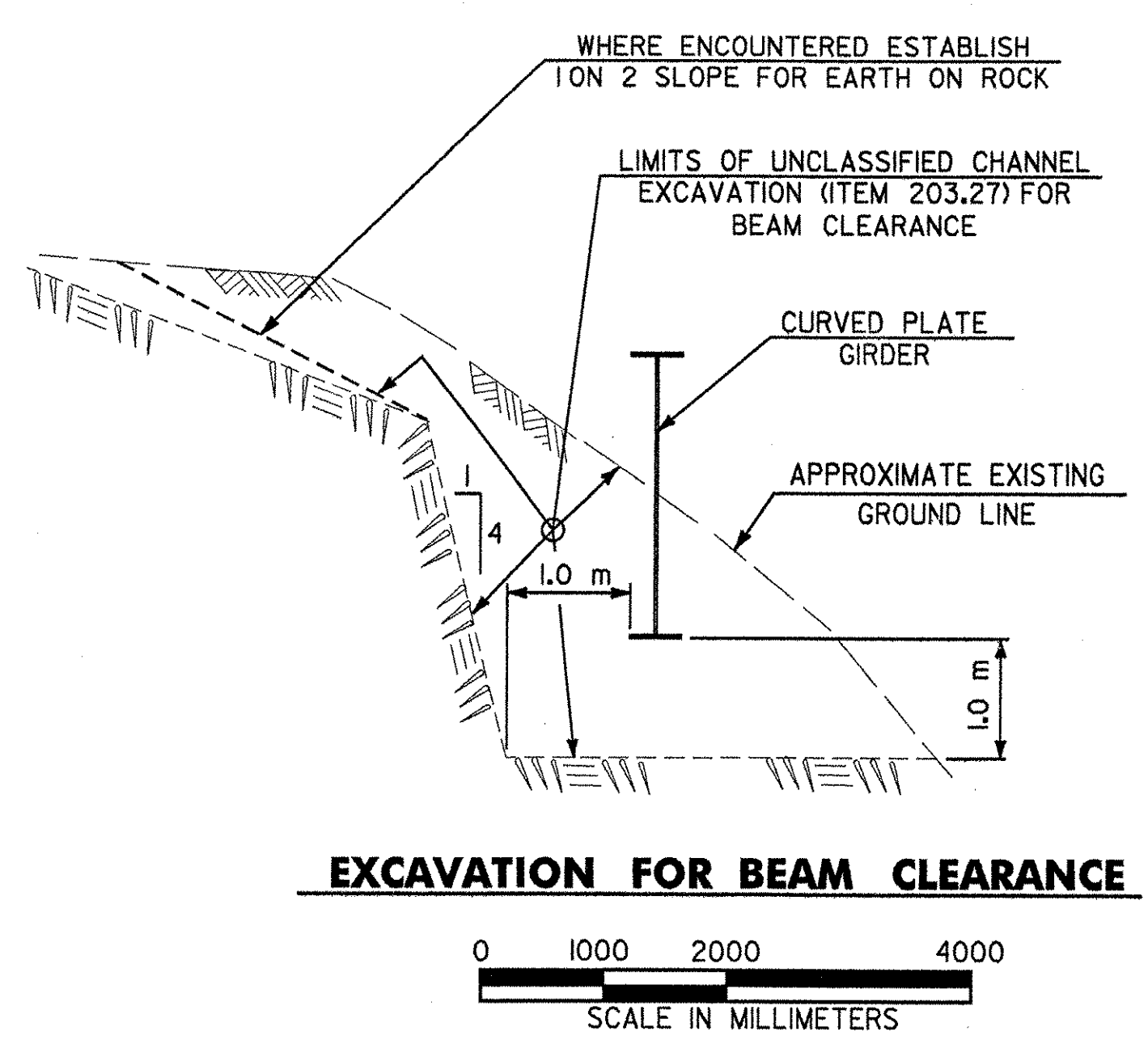
TYPICAL EARTHWORK SECTION AT CANTILEVERED WINGWALL



SUBBASE DETAIL AT ABUTMENT NOT TO SCALE



TYPICAL WINGWALL EARTHWORK SECTION WITH FOOTING ON TOP OF ROCK



EXCAVATION FOR BEAM CLEARANCE

STATE OF VERMONT AGENCY OF TRANSPORTATION		
Town Of	HARTLAND	Bridge No. 60
Highway No.	U.S. ROUTE 5	Log Sta.
U.S. ROUTE 5 OVER LULLS BROOK		
TYPICAL ABUTMENT & WINGWALL SECTIONS		
Designed By	S. BAKI 12/98	Drawn By W. GAYNOR 12/98
Checked By	S. BAKI 12/98	Bridge Design Supervisor J. MIECZKOWSKI Date 12/98
PROJECT	HARTLAND	PROJECT NO. BRS No. 0113(22)
I.G.C. Info. M:\456201 VAOT Hartland\struct\zf204aty.dgn		
Bridge Sheet No.	BRI04	Sheet 39 of 86