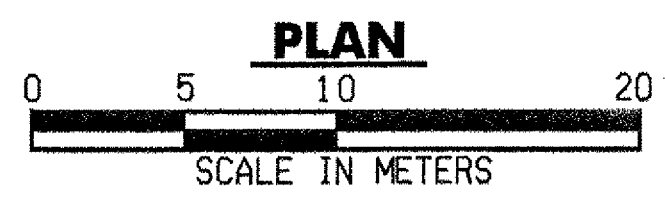
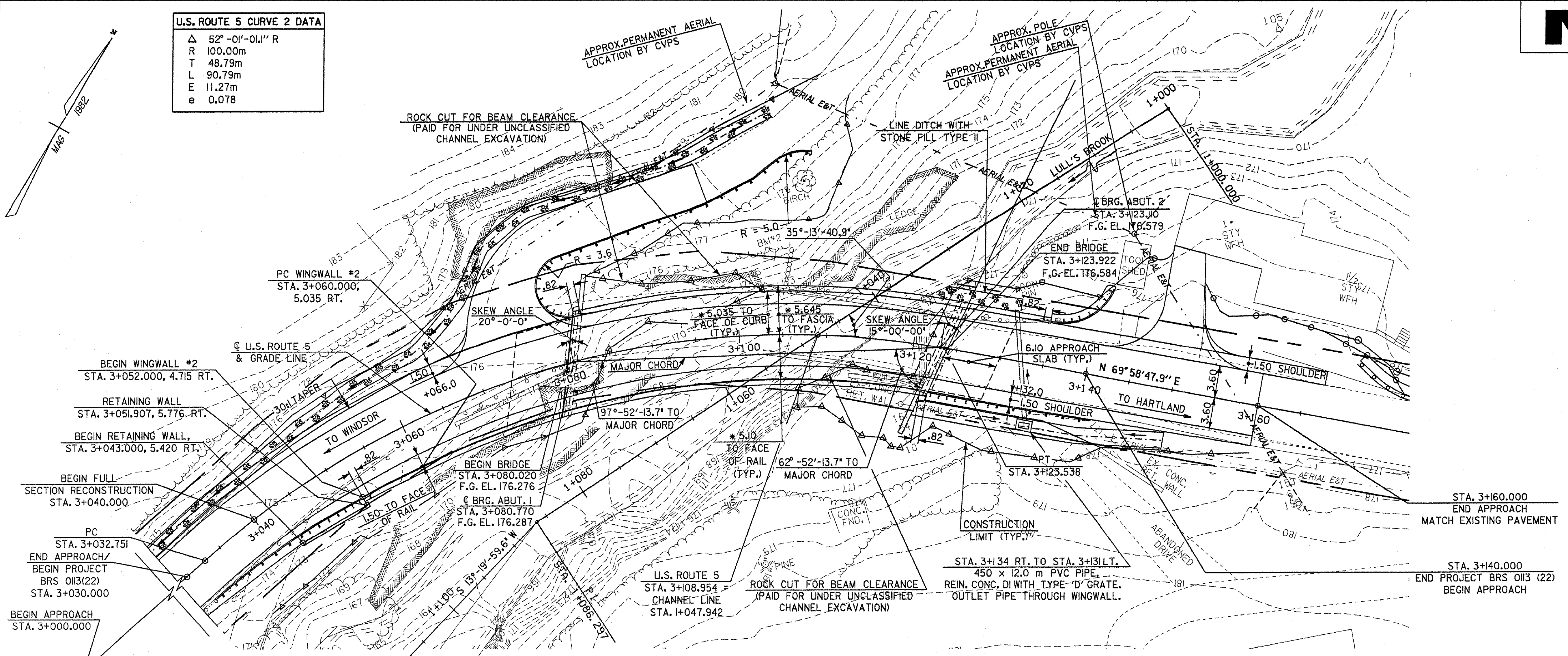
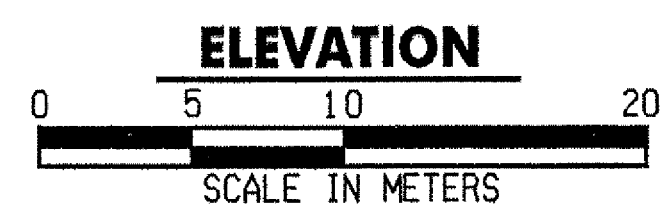
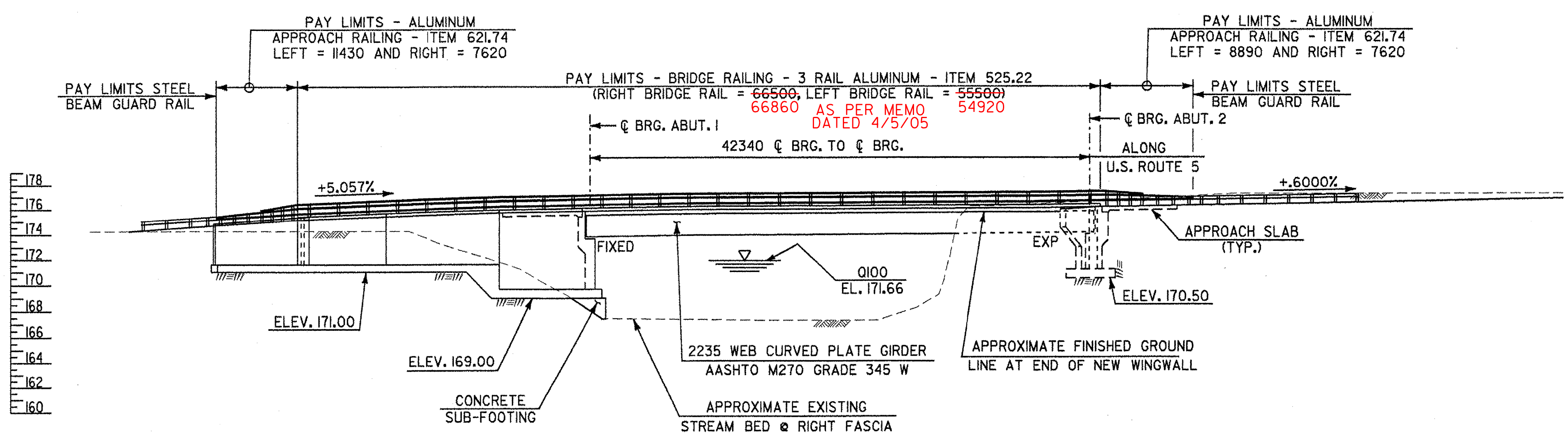


U.S. ROUTE 5 CURVE 2 DATA

Δ	52°-01'-01.1" R
R	100.00m
T	48.79m
L	90.79m
E	11.27m
e	0.078



* DIMENSIONS ARE RADIAL.



- NOTES:**
1. FOR EXISTING STRUCTURE LAYOUT SEE HIGHWAY PLAN SHEET
 2. FOR TEMPORARY DETOUR LAYOUT SEE TRAFFIC CONTROL PLAN SHEETS.
 3. FOR REMOVAL AND RELOCATION OF EXISTING TOOL SHED SEE HIGHWAY PLAN SHEET

**STATE OF VERMONT
AGENCY OF TRANSPORTATION**

Town Of	HARTLAND	Bridge No.	60
Highway No.	U.S. ROUTE 5	Log Sta.	
		Surv. Sta.	
U.S. ROUTE 5 OVER LULLS BROOK			

BRIDGE PLAN AND ELEVATION

Designed By	S. BAKI 12/98	Drawn By	W. GAYNOR 12/98
Checked By	S. BAKI 12/98	Bridge Design Supervisor	J. MECZKOWSKI Date 12/98
PROJECT	HARTLAND	PROJECT NO.	BRS No. 013(22)
I.G.C. Info. M:\456201\VAOT Hartland\struct\zf204gpl.dgn			
Bridge Sheet No.	BRI03	Sheet	38 of 86