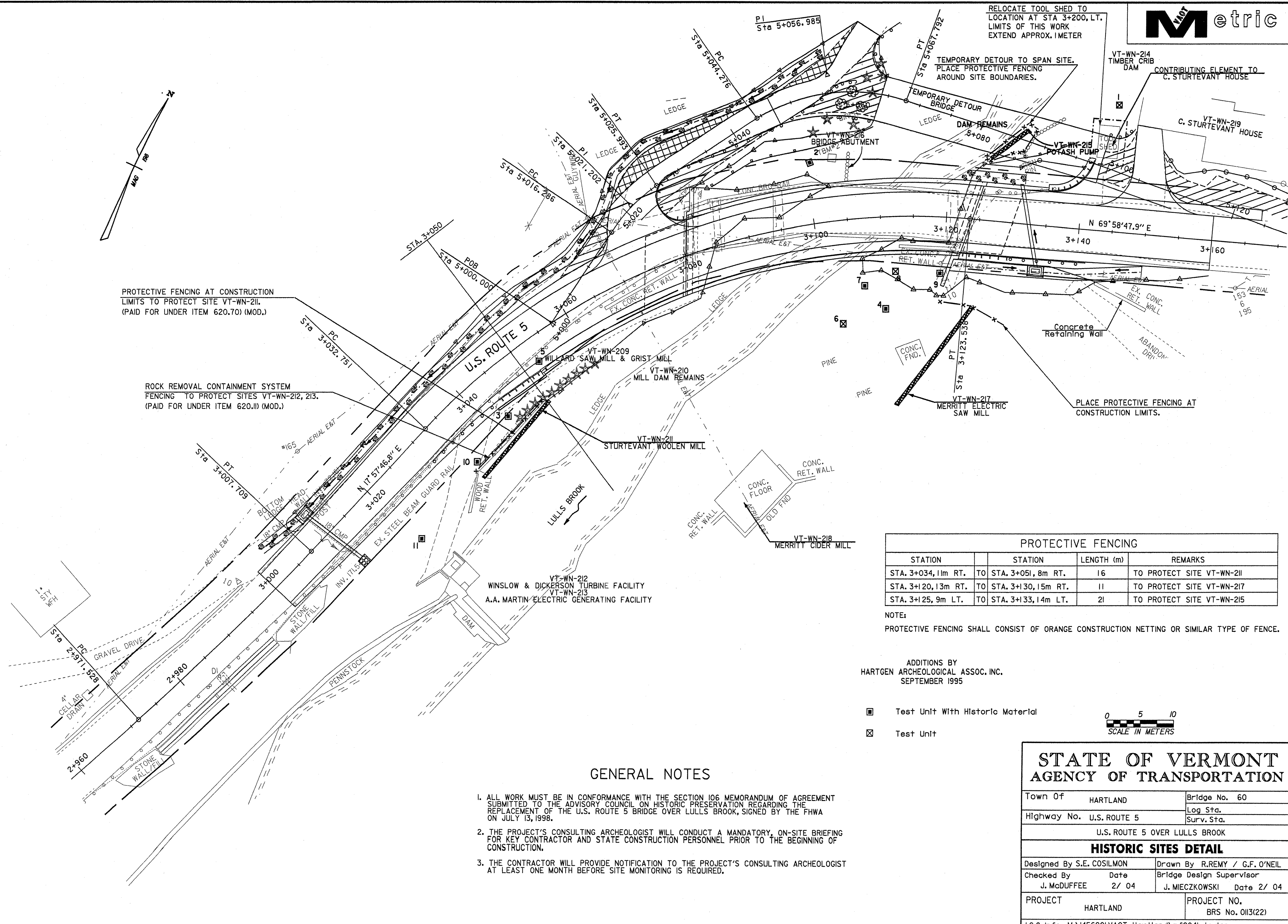
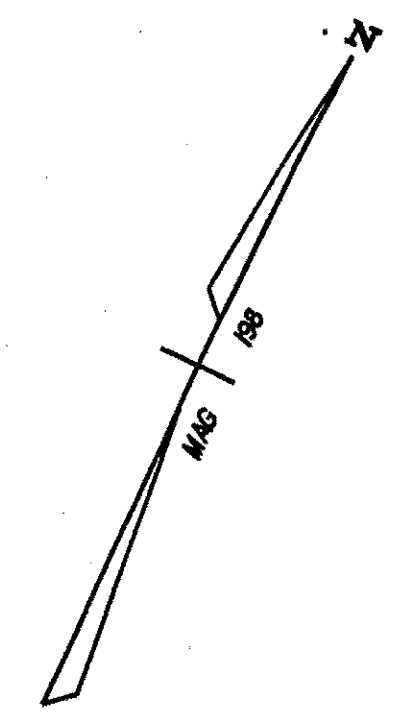


RELOCATE TOOL SHED TO LOCATION AT STA 3+200, LT. LIMITS OF THIS WORK EXTEND APPROX. 1 METER



PROTECTIVE FENCING AT CONSTRUCTION LIMITS TO PROTECT SITE VT-WN-211. (PAID FOR UNDER ITEM 620.70) (MOD.)

ROCK REMOVAL CONTAINMENT SYSTEM FENCING TO PROTECT SITES VT-WN-212, 213. (PAID FOR UNDER ITEM 620.11) (MOD.)

TEMPORARY DETOUR TO SPAN SITE. PLACE PROTECTIVE FENCING AROUND SITE BOUNDARIES.

VT-WN-214 TIMBER CRIB DAM CONTRIBUTING ELEMENT TO C. STURTEVANT HOUSE

VT-WN-219 C. STURTEVANT HOUSE

Concrete Retaining Wall

PLACE PROTECTIVE FENCING AT CONSTRUCTION LIMITS.

PROTECTIVE FENCING			
STATION	STATION	LENGTH (m)	REMARKS
STA. 3+034, 11m RT.	TO STA. 3+051, 8m RT.	16	TO PROTECT SITE VT-WN-211
STA. 3+120, 13m RT.	TO STA. 3+130, 15m RT.	11	TO PROTECT SITE VT-WN-217
STA. 3+125, 9m LT.	TO STA. 3+133, 14m LT.	21	TO PROTECT SITE VT-WN-215

NOTE:
PROTECTIVE FENCING SHALL CONSIST OF ORANGE CONSTRUCTION NETTING OR SIMILAR TYPE OF FENCE.

ADDITIONS BY
HARTGEN ARCHEOLOGICAL ASSOC. INC.
SEPTEMBER 1995

- Test Unit With Historic Material
- ⊠ Test Unit



GENERAL NOTES

1. ALL WORK MUST BE IN CONFORMANCE WITH THE SECTION 106 MEMORANDUM OF AGREEMENT SUBMITTED TO THE ADVISORY COUNCIL ON HISTORIC PRESERVATION REGARDING THE REPLACEMENT OF THE U.S. ROUTE 5 BRIDGE OVER LULLS BROOK, SIGNED BY THE FHWA ON JULY 13, 1998.
2. THE PROJECT'S CONSULTING ARCHEOLOGIST WILL CONDUCT A MANDATORY, ON-SITE BRIEFING FOR KEY CONTRACTOR AND STATE CONSTRUCTION PERSONNEL PRIOR TO THE BEGINNING OF CONSTRUCTION.
3. THE CONTRACTOR WILL PROVIDE NOTIFICATION TO THE PROJECT'S CONSULTING ARCHEOLOGIST AT LEAST ONE MONTH BEFORE SITE MONITORING IS REQUIRED.

**STATE OF VERMONT
AGENCY OF TRANSPORTATION**

Town Of	HARTLAND	Bridge No.	60
Highway No.	U.S. ROUTE 5	Log Sta.	
		Surv. Sta.	
U.S. ROUTE 5 OVER LULLS BROOK			
HISTORIC SITES DETAIL			
Designed By	S.E. COSILMON	Drawn By	R.REMY / G.F. O'NEIL
Checked By	J. McDUFFEE	Date	2/ 04
		Bridge Design Supervisor	J. MIECZKOWSKI Date 2/ 04
PROJECT	HARTLAND	PROJECT NO.	BRS No. 0113(22)
I.G.C. Info. M:\1456201\VA0T Hartland\zf204bdr.dgn			
Bridge Sheet No.		Sheet 33	of 86