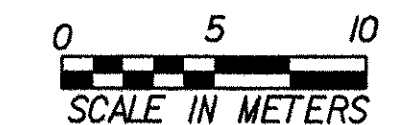
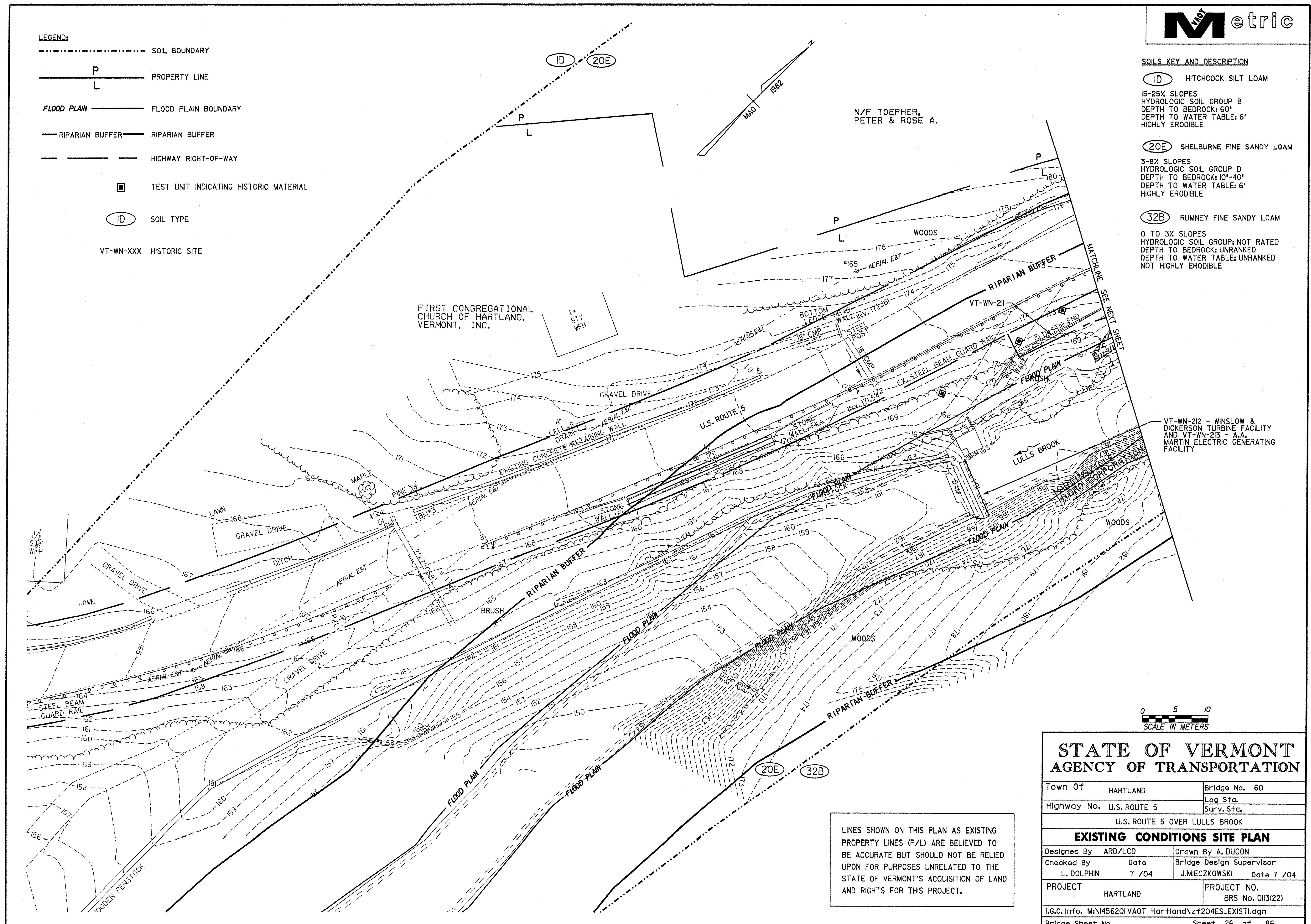


- LEGEND:**
- SOIL BOUNDARY
 - P
L PROPERTY LINE
 - FLOOD PLAIN BOUNDARY
 - RIPARIAN BUFFER
 - HIGHWAY RIGHT-OF-WAY
 - TEST UNIT INDICATING HISTORIC MATERIAL
 - (ID) SOIL TYPE
 - VT-WN-XXX HISTORIC SITE

- SOILS KEY AND DESCRIPTION**
- (ID) HITCHCOCK SILT LOAM
15-25% SLOPES
HYDROLOGIC SOIL GROUP B
DEPTH TO BEDROCK: 60'
DEPTH TO WATER TABLE: 6'
HIGHLY ERODIBLE
 - (20E) SHELBURNE FINE SANDY LOAM
3-8% SLOPES
HYDROLOGIC SOIL GROUP D
DEPTH TO BEDROCK: 10'-40'
DEPTH TO WATER TABLE: 6'
HIGHLY ERODIBLE
 - (32B) RUMNEY FINE SANDY LOAM
0 TO 3% SLOPES
HYDROLOGIC SOIL GROUP: NOT RATED
DEPTH TO BEDROCK: UNRANKED
DEPTH TO WATER TABLE: UNRANKED
NOT HIGHLY ERODIBLE



LINES SHOWN ON THIS PLAN AS EXISTING PROPERTY LINES (P/L) ARE BELIEVED TO BE ACCURATE BUT SHOULD NOT BE RELIED UPON FOR PURPOSES UNRELATED TO THE STATE OF VERMONT'S ACQUISITION OF LAND AND RIGHTS FOR THIS PROJECT.

**STATE OF VERMONT
AGENCY OF TRANSPORTATION**

Town Of	HARTLAND	Bridge No.	60
Highway No.	U.S. ROUTE 5	Log Sta.	
		Surv. Sta.	
U.S. ROUTE 5 OVER LULLS BROOK			
EXISTING CONDITIONS SITE PLAN			
Designed By	ARD/LCD	Drawn By	A. DUGON
Checked By	Date	Bridge Design Supervisor	
L. DOLPHIN	7 /04	J. MIECZKOWSKI	Date 7 /04
PROJECT	HARTLAND	PROJECT NO.	BRS No. 013(22)
I.G.C. Info. M:\456201 VA0T Hartland\z204ES_EXISTI.dgn			
Bridge Sheet No.	Sheet 26 of 86		