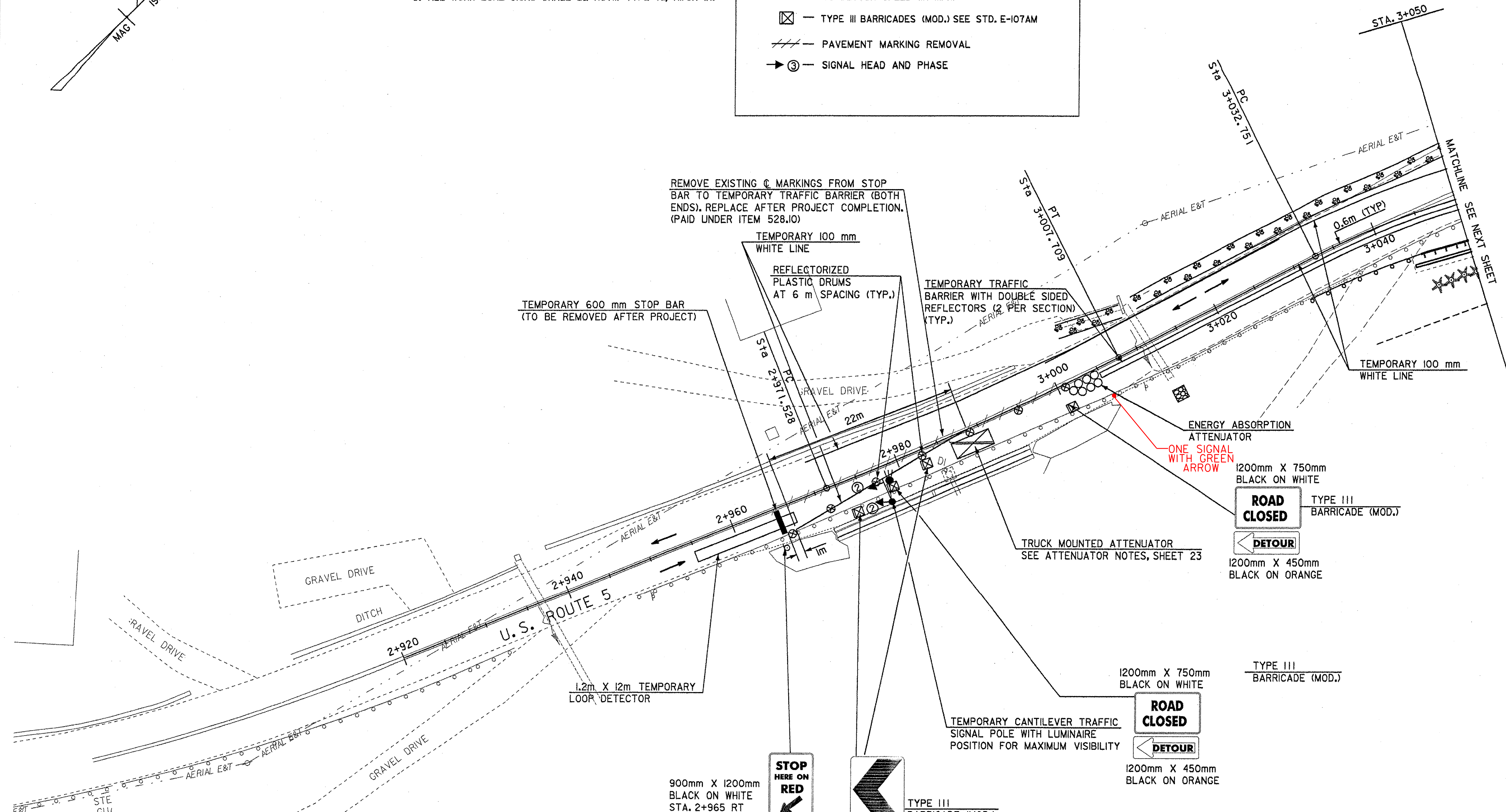
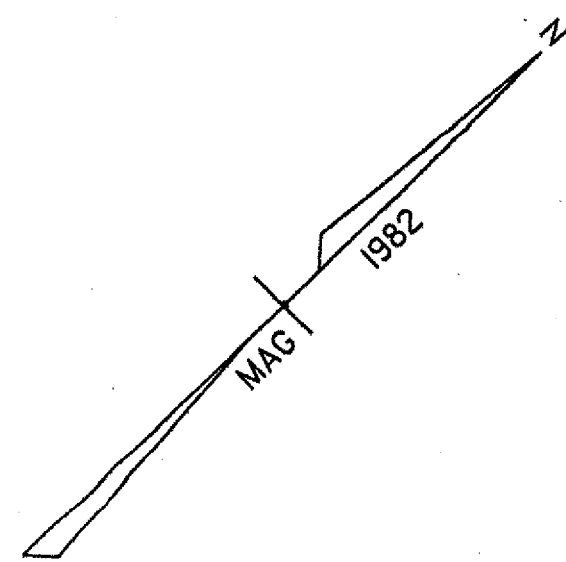
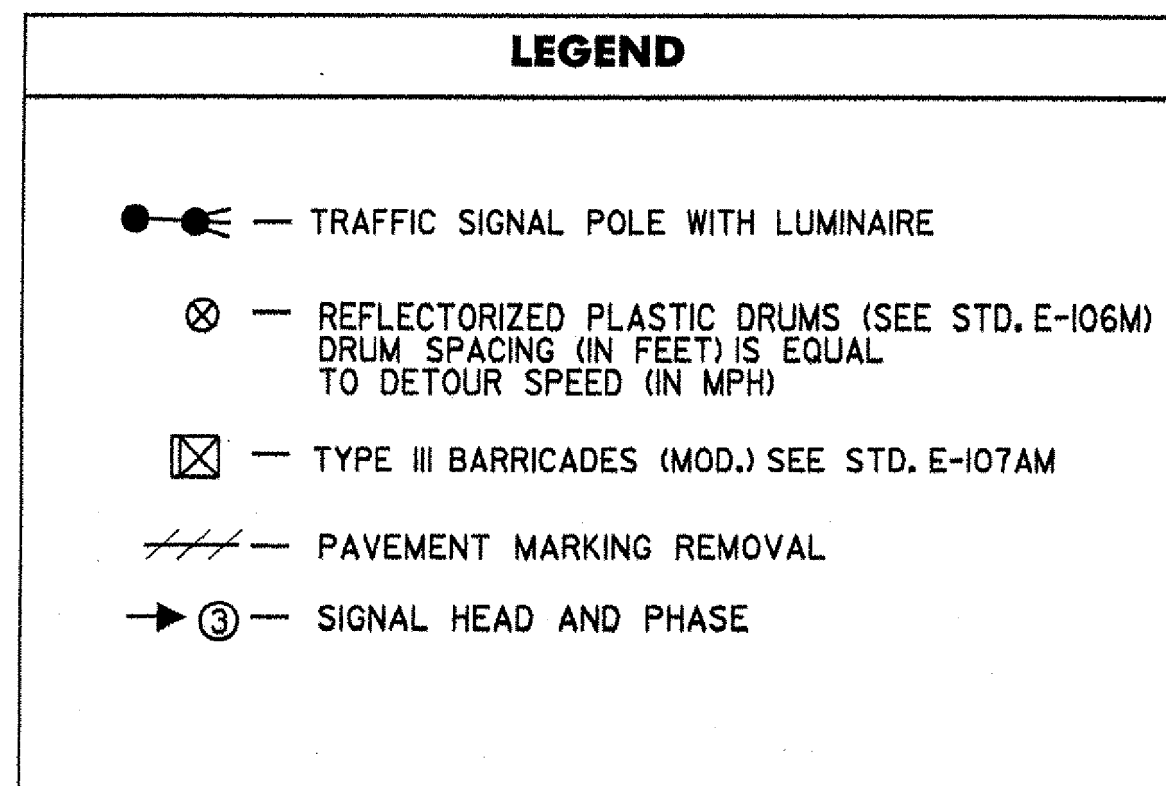


- NOTES:**
1. ALL TRAFFIC RELATED SIGNS SHALL BE REMOVED OR COVERED WHEN SIGNAL IS NOT OPERATING.
 2. ITEM LOCATIONS ARE APPROXIMATE.
 3. THE CONTRACTOR SHALL BE RESPONSIBLE TO CONFIRM ANY MEASUREMENTS IN THE FIELD.
 4. FOR ADVANCE WARNING SIGNS LAYOUT, SEE SHEET 22.
 5. ALL WORK ZONE SIGNS SHALL BE ASTM TYPE VII, VIII OR IX.



REMOVE EXISTING C MARKINGS FROM STOP BAR TO TEMPORARY TRAFFIC BARRIER (BOTH ENDS). REPLACE AFTER PROJECT COMPLETION. (PAID UNDER ITEM 528.10)

TEMPORARY 600 mm STOP BAR (TO BE REMOVED AFTER PROJECT)

TEMPORARY 100 mm WHITE LINE
REFLECTORIZED PLASTIC DRUMS AT 6 m SPACING (TYP.)

TEMPORARY TRAFFIC BARRIER WITH DOUBLE SIDED REFLECTORS (2 PER SECTION) (TYP.)

ENERGY ABSORPTION ATTENUATOR

ONE SIGNAL WITH GREEN ARROW
1200mm X 750mm BLACK ON WHITE

ROAD CLOSED
TYPE III BARRICADE (MOD.)

DETOUR
1200mm X 450mm BLACK ON ORANGE

TRUCK MOUNTED ATTENUATOR SEE ATTENUATOR NOTES, SHEET 23

1200mm X 750mm BLACK ON WHITE

ROAD CLOSED

DETOUR

1200mm X 450mm BLACK ON ORANGE

TEMPORARY CANTILEVER TRAFFIC SIGNAL POLE WITH LUMINAIRE POSITION FOR MAXIMUM VISIBILITY

TYPE III BARRICADE (MOD.)
600mm X 750mm BLACK ON ORANGE

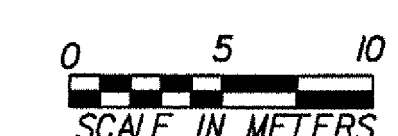
STOP HERE ON RED

TO GET GREEN LIGHT

900mm X 1200mm BLACK ON WHITE STA. 2+965 RT

900mm X 900mm BLACK ON WHITE

1.2m X 12m TEMPORARY LOOP DETECTOR



STATE OF VERMONT AGENCY OF TRANSPORTATION

Town Of	HARTLAND	Bridge No.	60
Highway No.	U.S. ROUTE 5	Log Sta.	
		Surv. Sta.	
U.S. ROUTE 5 OVER LULLS BROOK			
TRAFFIC CONTROL PLAN			
Designed By	S.E. COSILMON	Drawn By	R.REMY / G.F. O'NEIL
Checked By	J. McDUFFEE	Date	2/ 04
		Bridge Design Supervisor	J.MIECZKOWSKI Date 2/ 04
PROJECT	HARTLAND	PROJECT NO.	BRS No. 0113(22)
I.G.C. Info. M:\1456201 VAOT Hartland\z7204bdr.dgn			
Bridge Sheet No.		Sheet	19 of 86