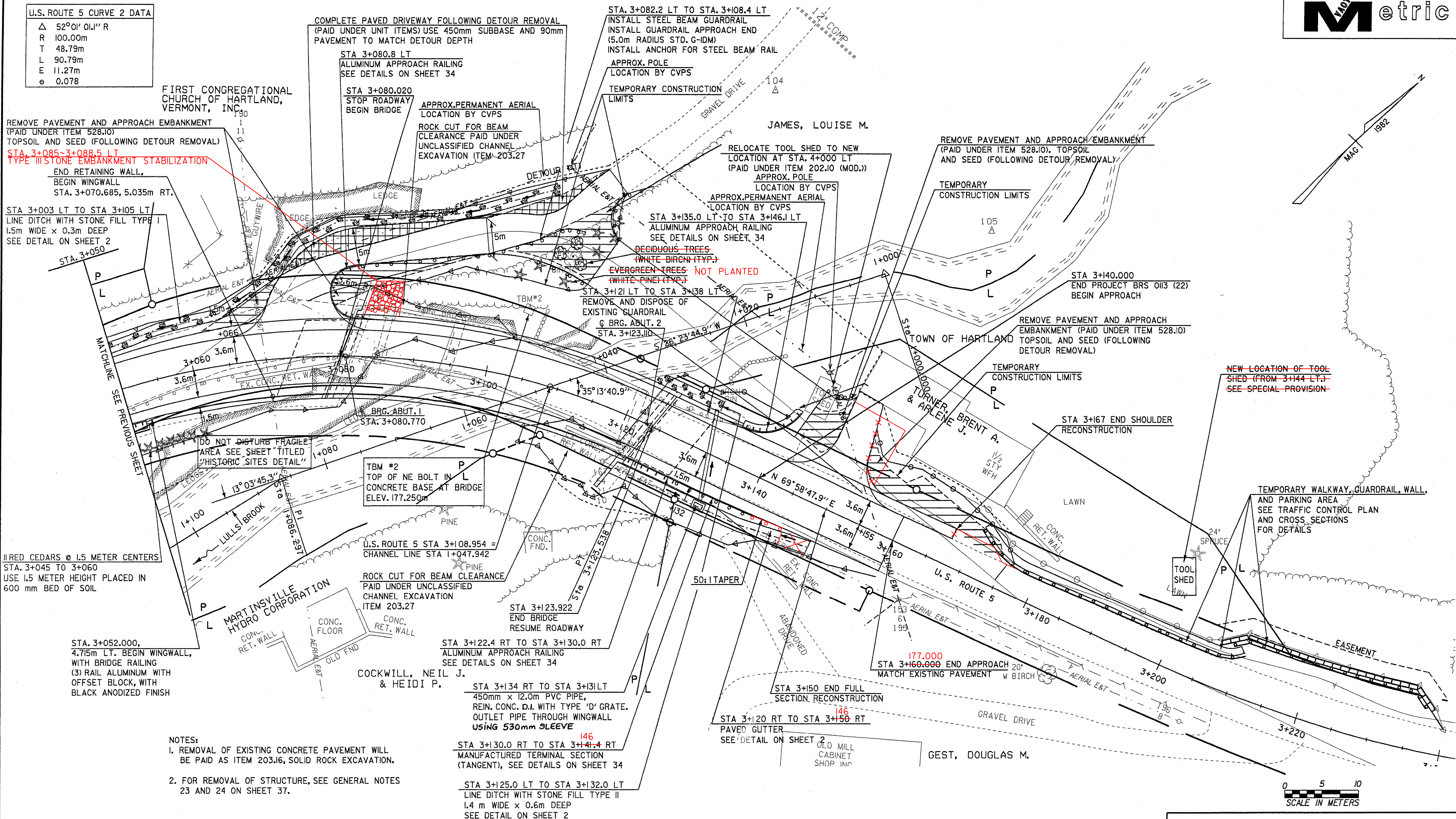


U.S. ROUTE 5 CURVE 2 DATA

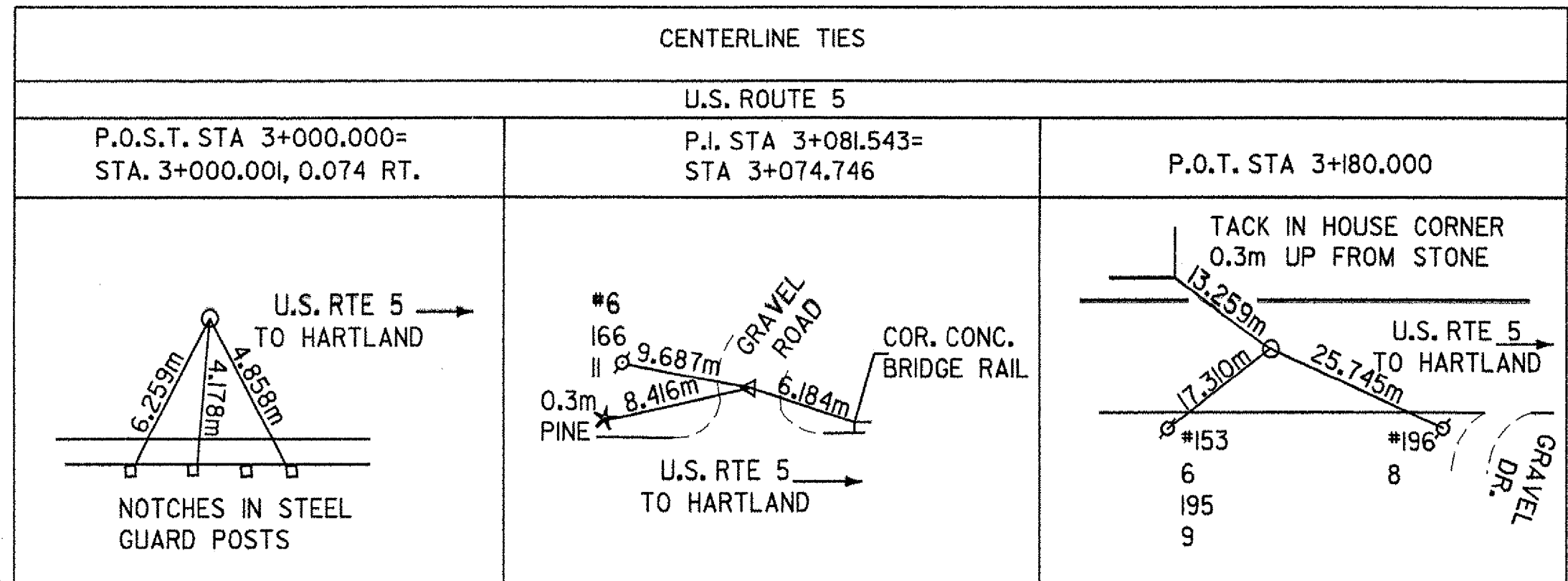
Δ	52°01' 01.11" R
R	100.00m
T	48.79m
L	90.79m
E	11.27m
e	0.078



- NOTES:
- REMOVAL OF EXISTING CONCRETE PAVEMENT WILL BE PAID AS ITEM 203.16, SOLID ROCK EXCAVATION.
 - FOR REMOVAL OF STRUCTURE, SEE GENERAL NOTES 23 AND 24 ON SHEET 37.

DRIVEWAY TABLE

DRIVEWAY LOCATION	RADIUS	WIDTH	REMARKS
STA 3+075 LT	6m	5m	COMPLETE PAVING FOLLOWING DETOUR REMOVAL
STA 3+150 LT	6m	4.4m	PAVED



STATE OF VERMONT
AGENCY OF TRANSPORTATION

Town Of	HARTLAND	Bridge No.	60
Highway No.	U.S. ROUTE 5	Log Sta.	
		Surv. Sta.	
U.S. ROUTE 5 OVER LULLS BROOK			
ROADWAY PLAN			
Designed By	S.E. COSILMON	Drawn By	R.REMY / G.F. O'NEIL
Checked By	Date	Bridge Design Supervisor	
	J.R. McDUFFEE 2/ 04	J.MIECZKOWSKI	Date 2/ 04
PROJECT	HARTLAND	PROJECT NO.	BRS No. 0113(22)
I.G.C. Info.	M:\145620\VA0T Hartland\z\F204bdr.dgn		
Bridge Sheet No.		Sheet	14 of 86