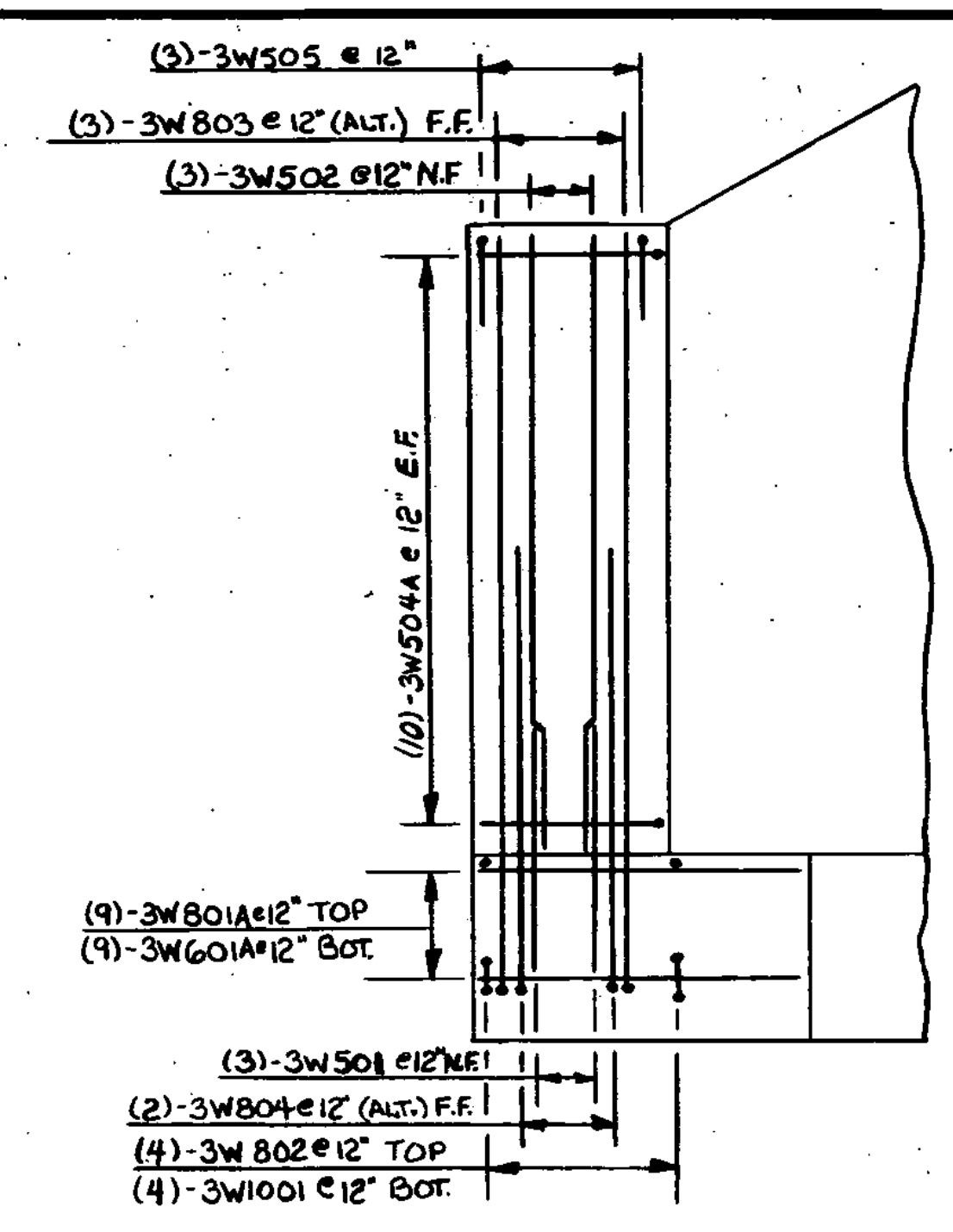
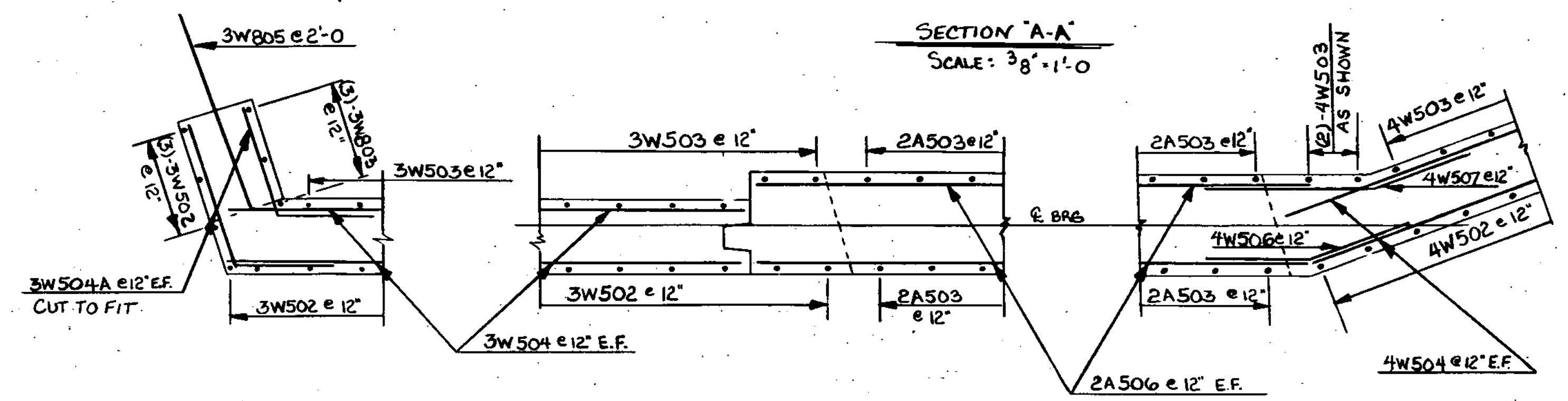


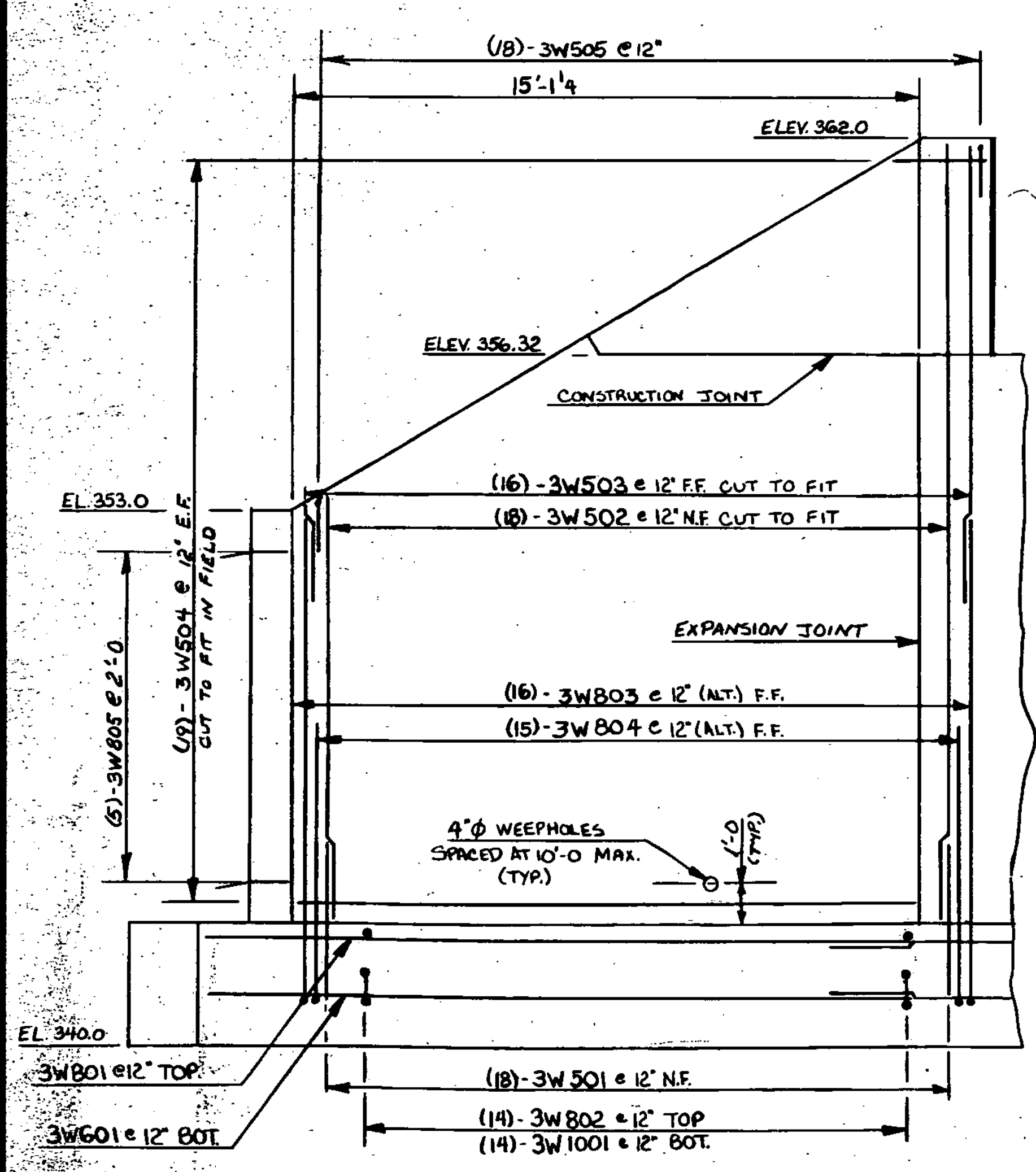
FOOTING REINFORCING PLAN
SCALE: 1/4" = 1'-0"



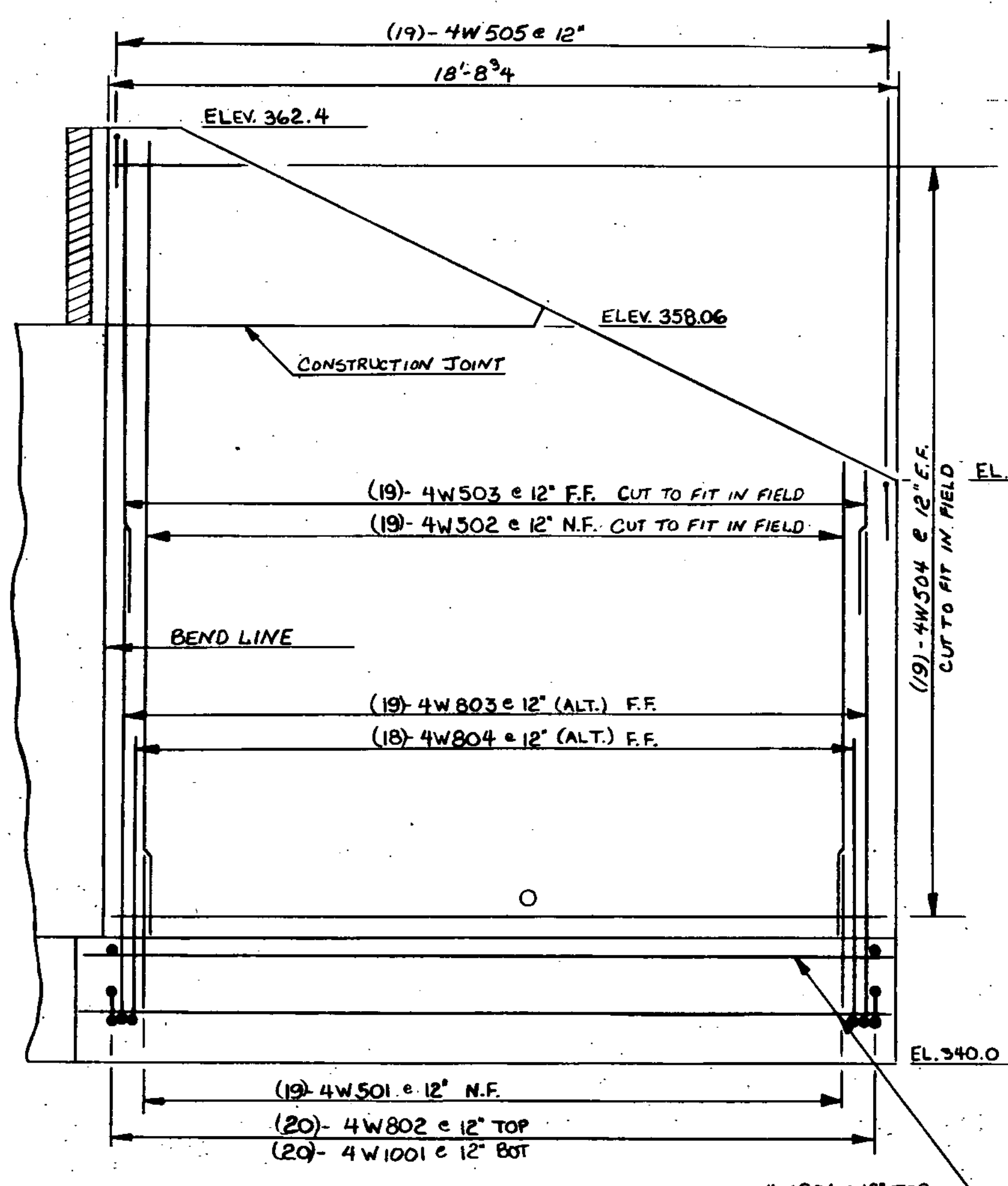
SECTION 'A-A'
SCALE: 3/8" = 1'-0"



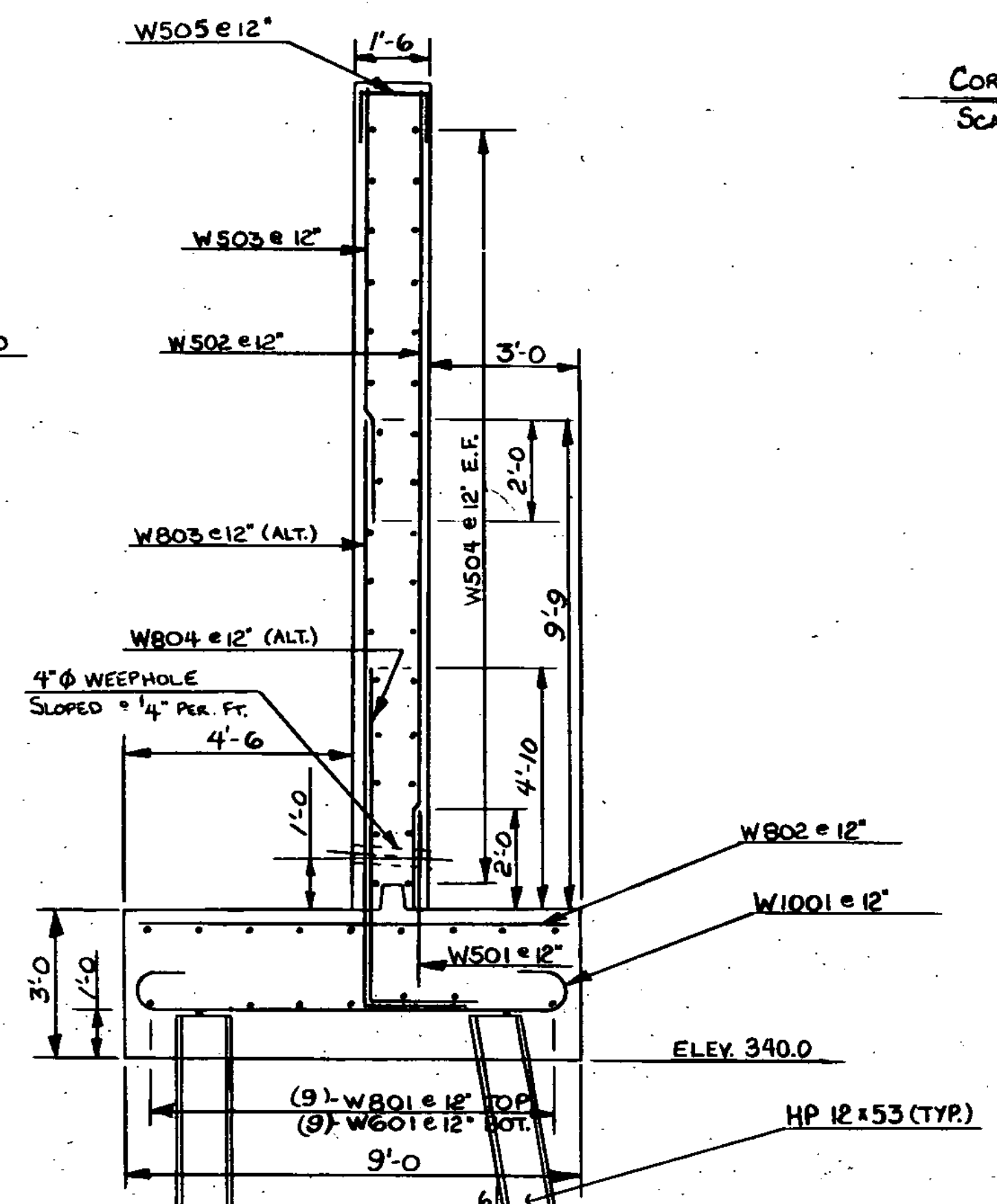
CORNER DETAILS
SCALE: 1/2" = 1'-0"



ELEVATION - WINGWALL # 3
SCALE: 3/8" = 1'-0"



ELEVATION - WINGWALL # 4
SCALE: 3/8" = 1'-0"



TYPICAL SECTION - WINGWALLS #3 & #4
SCALE: 3/8" = 1'-0"

| | |
|--|--|
| STATE OF VERMONT | |
| AGENCY OF TRANSPORTATION | |
| TOWN OF FAIRFAX | Bridge No. 8 |
| HIGHWAY NO. Vt. 128 | Log Sta. 9+56 |
| | Surv. Sta. 24+21 |
| Vt. 128 OVER BROWNS RIVER | |
| FOOTING REINFORCING PLAN & WINGWALLS 3 & 4 | |
| Designed by R. ALDRICH | Drawn by M. EVANS 10/83 |
| Checked by G. SCHELLEY date 10/83 | Bridge Design Supervisor R. L. Oatley date 1-84 |
| PROJECT FAIRFAX | PROJECT NO. BRS-0229 (2)S |
| Bridge Sheet No. BR11 | Sheet 32 of 98 |