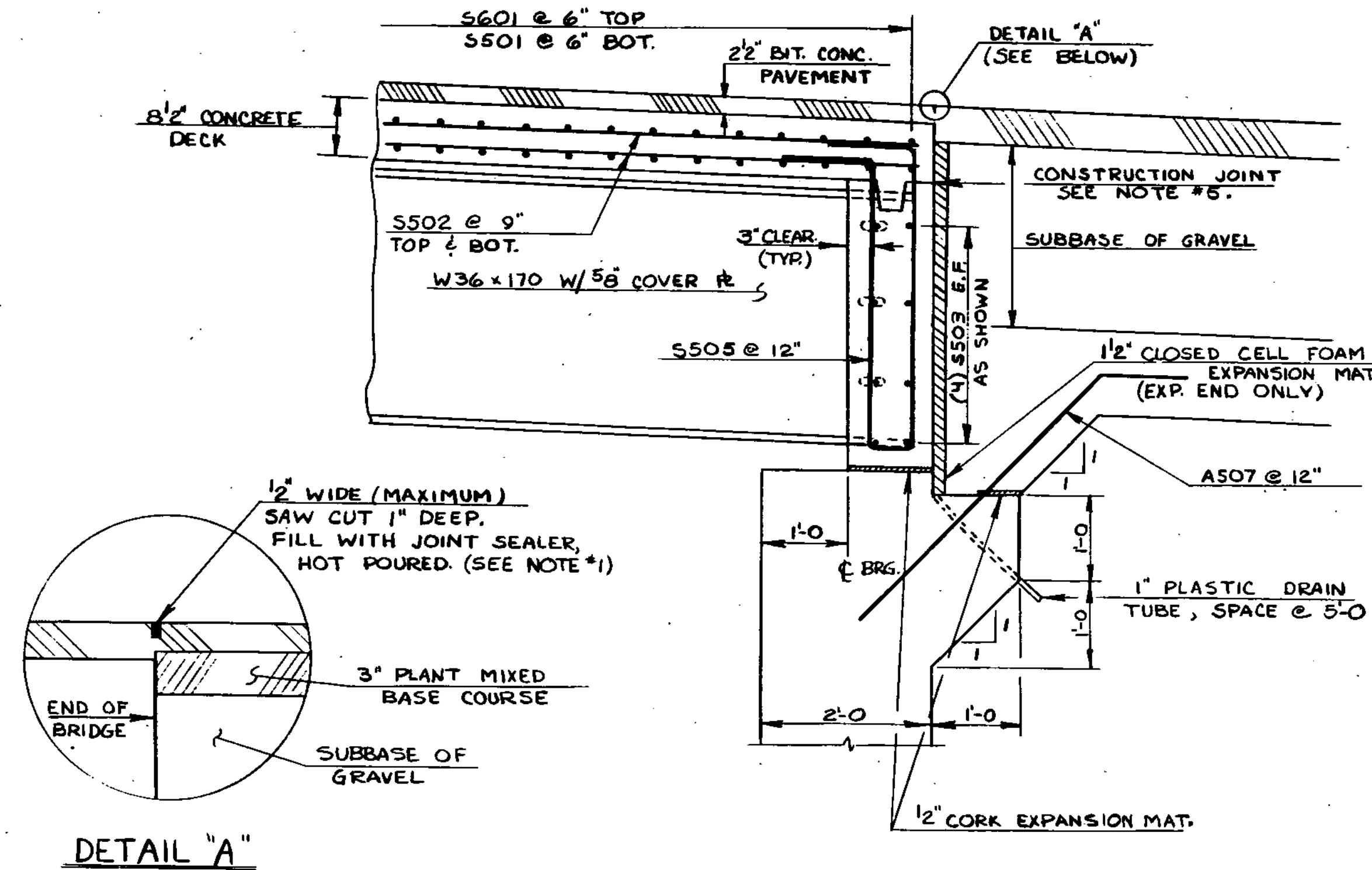


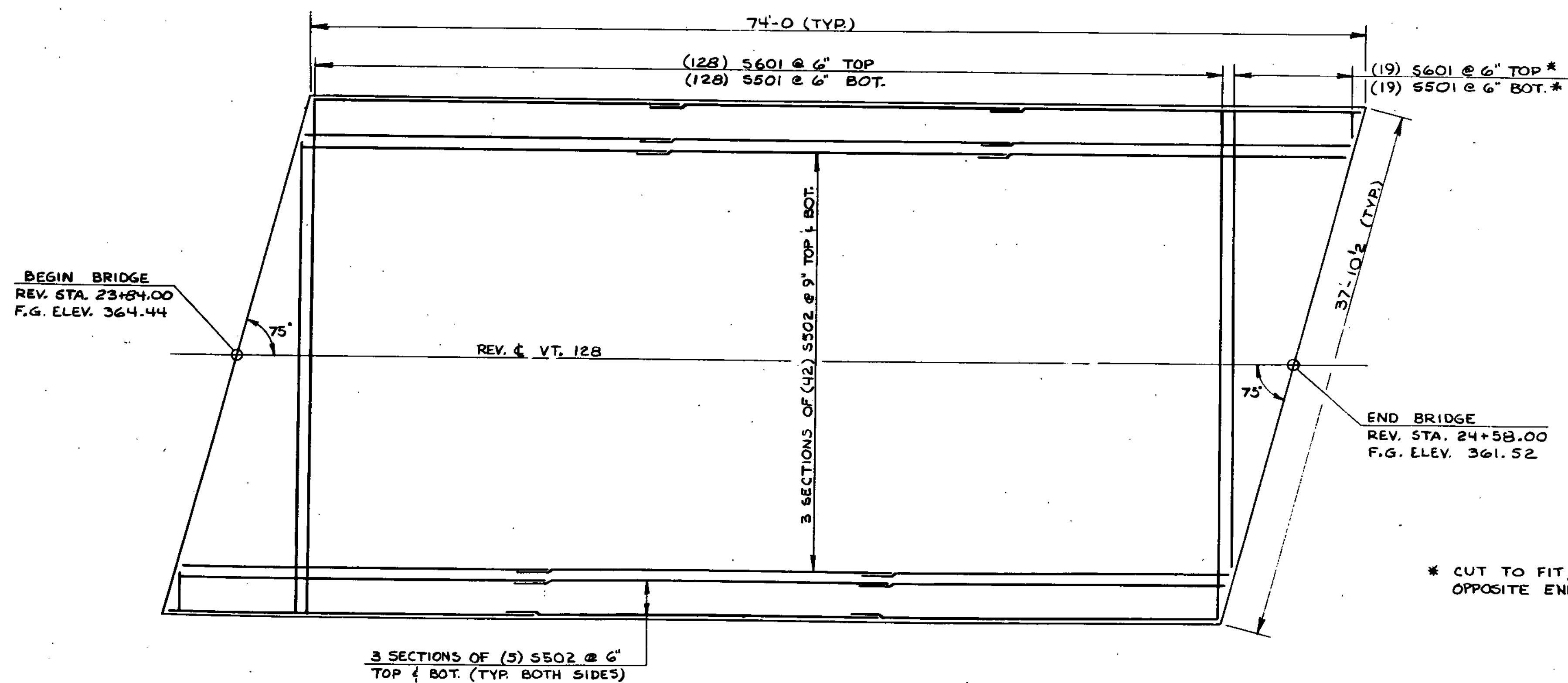
TYPICAL BRIDGE SECTION
SCALE: 3/8" = 1'-0"



CURTAIN WALL DETAILS
SCALE: 3/4" = 1'-0"

NOTES

1. PAYMENT FOR ALL MATERIALS AND LABOR FOR PLACEMENT OF HOT POURED JOINT SEALER, AS DETAILED ON THIS SHEET, SHALL BE SUBSIDIARY TO ITEM 406.25, "BITUMINOUS CONCRETE PAVEMENT".
2. THE COST FOR FURNISHING AND INSTALLING ALL PREFORMED JOINT FILLING MATERIALS SHALL BE INCLUDED IN THE UNIT PRICE BID FOR CONCRETE, CLASS A.
3. SEE GENERAL SPECIAL PROVISION 707.23 FOR DETAILS OF CLOSED CELL FOAM EXPANSION MATERIAL.
4. SEE STD. SCB-D4-76 AND SCB-D6-73 FOR ADDITIONAL BRIDGE CURB DETAILS.
5. BOTH CURTAIN WALLS SHALL BE POURED AND ALLOWED TO CURE FOR 6 DAYS, OR TO A COMPRESSIVE STRENGTH OF 2000 PSI, BEFORE THE DECK IS POURED. COMPRESSIVE STRENGTH SHALL BE VERIFIED BY TEST CYLINDERS.
6. THE COST FOR FURNISHING AND INSTALLING CLOSED CELL FOAM EXPANSION MATERIAL SHALL BE CONSIDERED SUBSIDIARY TO THE UNIT PRICE BID FOR CONCRETE, CLASS A.



DECK REINFORCING PLAN
SCALE: 1" = 6'

* CUT TO FIT, USE CUTOFFS ON OPPOSITE END.

STATE OF VERMONT	
AGENCY OF TRANSPORTATION	
TOWN OF FAIRFAX	Bridge No. 8
HIGHWAY NO. VT. 128	Log Sta. 9+56 Surr. Sta. 24+21
VT. 128 OVER BROWNS RIVER SUPERSTRUCTURE DETAILS	
Designed by R. ALDRICH	Drawn by G. SCHELLEY
Checked by M. CERUTTI date 10/83	Bridge Design Supervisor R. L. DOLLE date 1-84
PROJECT FAIRFAX	PROJECT NO. BRS 0229(2) 5
Bridge Sheet No. BR805	Sheet 26 of 98

BR-4-83