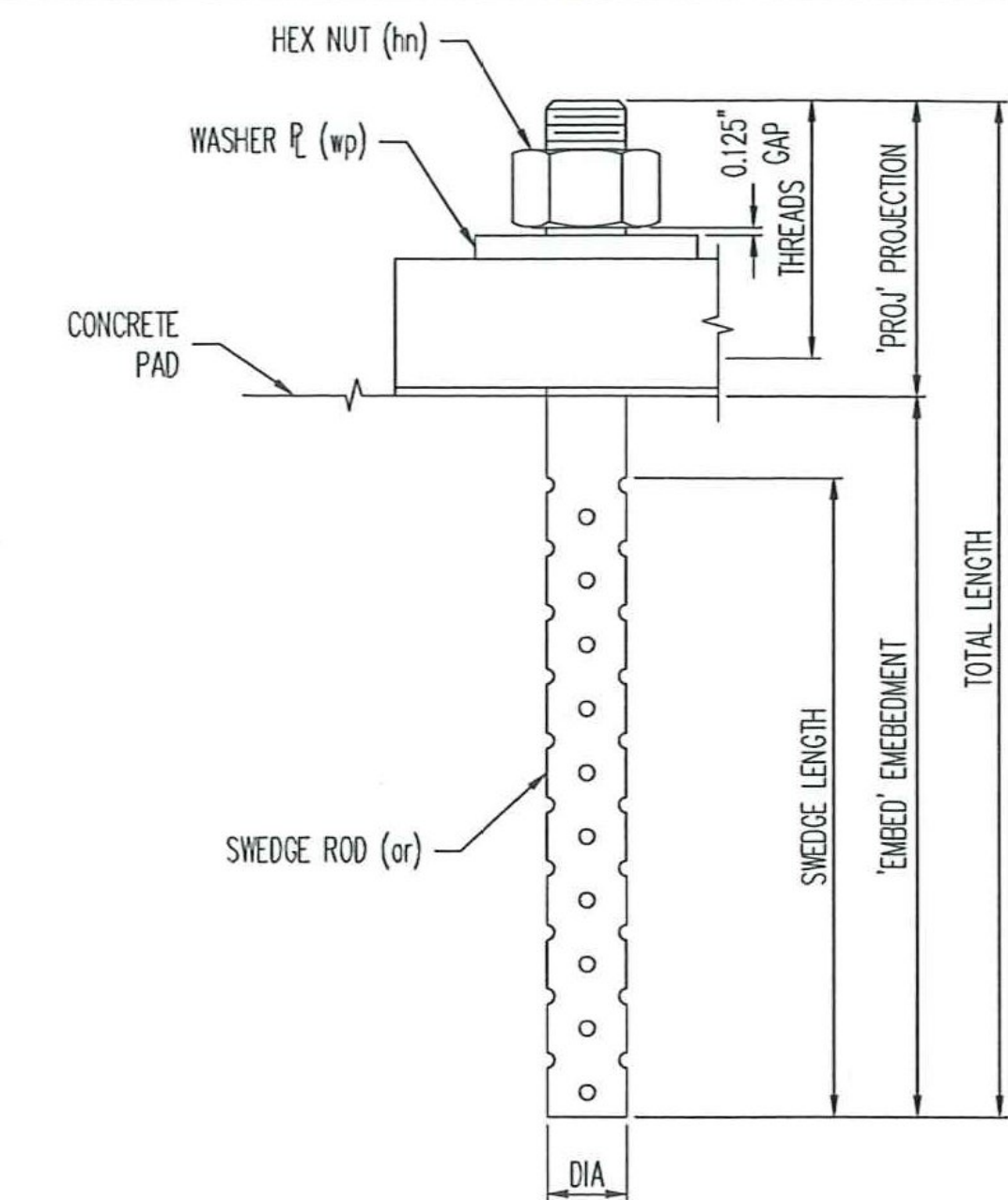


MK	QTY	DESCRIPTION
1A	2	PF-115
1sp1	2	SOLE PLATE
1ps1	2	PISTON
1pt1	2	POT PLATE
1ed1	2	ELASTOMERIC DISC
1br1	6	BRASS RING
1mp1	2	MASONRY PLATE
1FA	2	UNDERLAYMENT (*SL)
1B	4	SWEDGE ROD (*SL)
1C	4	HEAVY HEX NUT (*SL)
1D	4	WASHER PLATE (*SL)

HLMR BEARING ASSEMBLY LOCATION & LRFD DESIGN INFORMATION (PF)															
MK	QTY	STRUCTURE	BEARING TYPE	LOCATION	MAX VERT. SERVICE	MAX VERT. STRENGTH	MAX HORIZ. SERVICE	MAX HORIZ. STRENGTH	LONG MMNT	TRANS MMNT	ROTATION (RAD)	HEIGHT TO FABRICATE	HEIGHT IN PLANS	DIFFERENCE IN PLANS	UNDERLAYMENT IN HEIGHT (Y/N)
1A	2	Bridge No. 57	PF-115	ABUTMENT 2: G2, G3	115.0 kips	179.0 kips	29.0 kips	45.0 kips	0	0	0.03	5.382	9.000	-3.618	YES

ELASTOMERIC DISC SCHEDULE (PF)				
ASSEM MK	PIECE MK	QTY	ELASTOMERIC DISC DIMENSIONS	ELASTOMER MATERIAL
1A	1ed1	2	0.750 X 6.500φ	Neoprene, 50+/-5 Duro Gr.3

BRASS RING SCHEDULE (PF)				
ASSEM MK	PIECE MK	QTY	BRASS RING DIMENSIONS	BRASS MATERIAL
1A	1br1	6	0.094 X 0.375 X 6.500φ	B36 Half-Hard

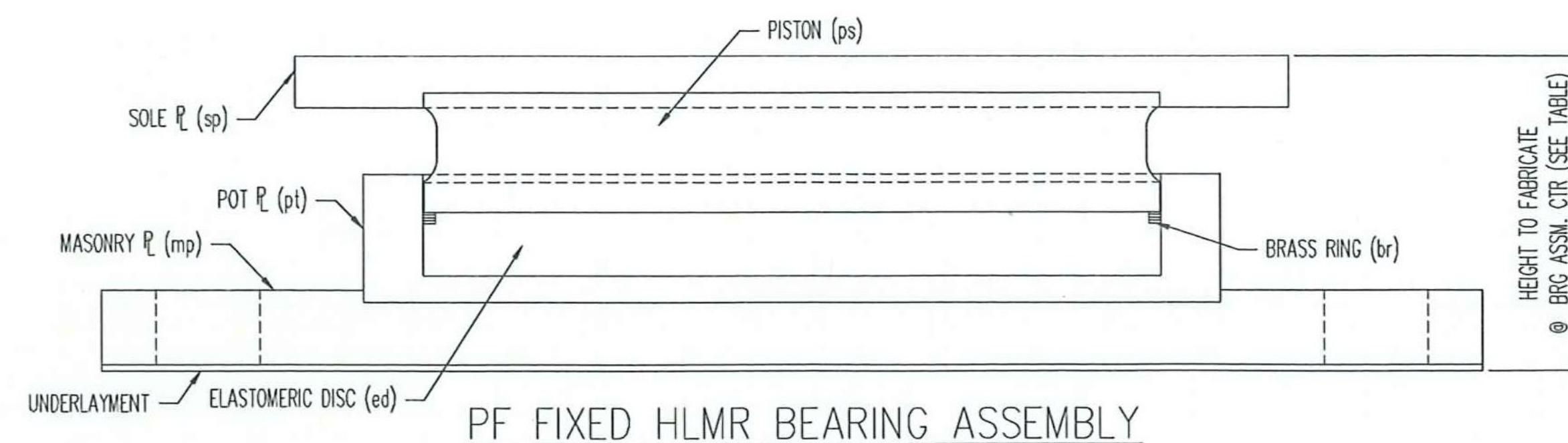


ANCHOR ASSEMBLY DETAIL

ANCHOR ROD SCHEDULE (PF)												
ASSEM MK	FOR BRG	PIECE MK	QTY	DIA	LENGTH	PROJ	EMBED	REMARKS	LOCATION	MATERIAL	COATING	
1B	1A	1ar1	2	1.500	20.000	5.000	15.000	4" threads, 14" swedge	ABUTMENT 2: G2	F1554 GR 36	A153-HDG	
1B	1A	1ar1	2	1.500	20.000	5.000	15.000	4" threads, 14" swedge	ABUTMENT 2: G3	F1554 GR 36	A153-HDG	

NUT SCHEDULE (PF)						
ASSEM MK	FOR BRG	PIECE MK	QTY	DIA	MATERIAL	COATING
1C	1A	1hn1	4	1.500	A563-DH or A194-2H	A153-HDG, Dry Lube & Dye

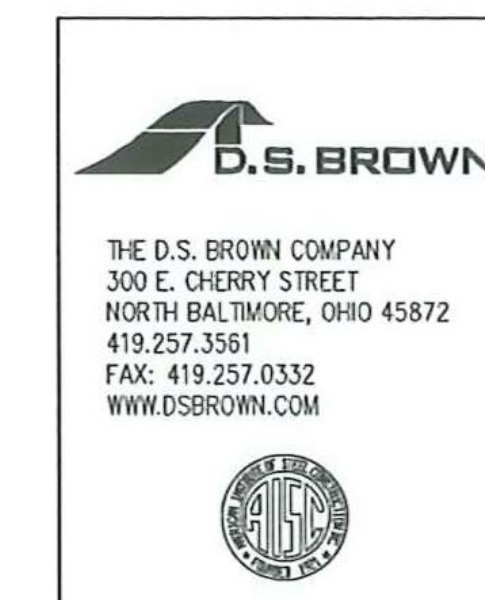
WASHER SCHEDULE (PF)									
ASSEM MK	FOR BRG	PIECE MK	QTY	THICKNESS	WIDTH	LENGTH	REMARKS	MATERIAL	COATING
1D	1A	1wp1	4	0.375	3.000	3.000	φ1.625" HOLE @ CTR	A36	A123-HDG



PF FIXED HLMR BEARING ASSEMBLY

* SL = SHIPPED LOOSE
SEE SHT. 02 FOR SUB-ASSEMBLY DETAILS.
SEE SHT. 001 FOR GENERAL NOTES & COATING LIMITS.
ALL DIMENSIONS IN INCHES UNLESS OTHERWISE NOTED

Vermont Agency of Transportation
RECEIVED
CK'D BY GML OK'D BY JEL
2:43 pm, Feb 28, 2012
RESUBMIT X APPROVED
BY KMH DATE 3/9/2012



REV.	DESCRIPTION	DATE	DET.	CKD.
	LOCATION — TOWN HIGHWAY 6 BRIDGE NO. 57			
	BRIDGE — 57	35029-1112-3		2 OF 2
	PROJECT NO. — BRO 1442(26)			
	PROJECT NAME — SPRINGFIELD			
	DESIGNER — VTDOT			
	CUSTOMER — T. BUCK CONSTRUCTION, INC.			
	DESCRIPTION: PF FIXED HLMR ASSEMBLY & DESIGN INFORMATION	SCALE: N.T.S.	QUANTITY: DA	CHECKED BY: KTG
	WINDSOR CO., VT	DATE: 1/26/12	RELEASE: 1	SHEET: 01