

Bench Mark #1
1+028, 6m Lt.
Spike In Root
Elev. 208.550

VT14 CURVE #1
Δ = 35° 21' 49.48"
R = 170.000m
T = 54.195m
L = 104.926m
E = 8.429m

SIGN LEGEND
R&S = REMOVE AND SALVAGE

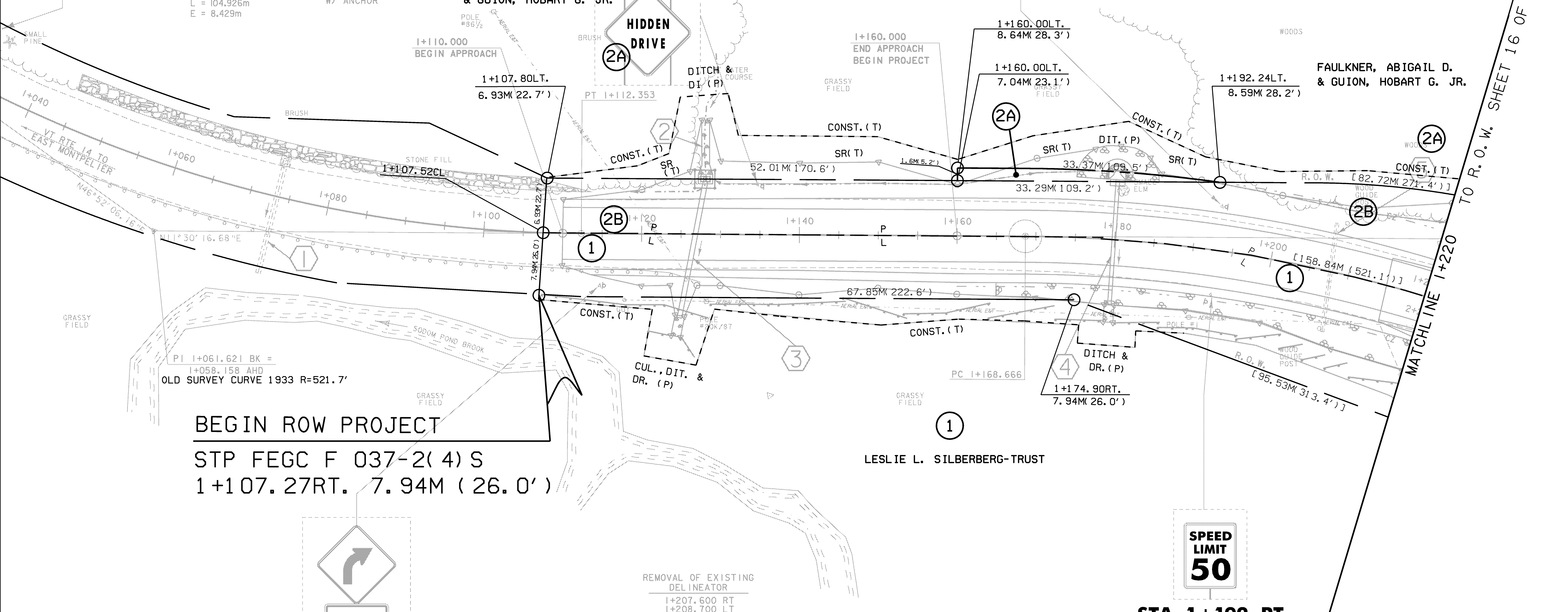
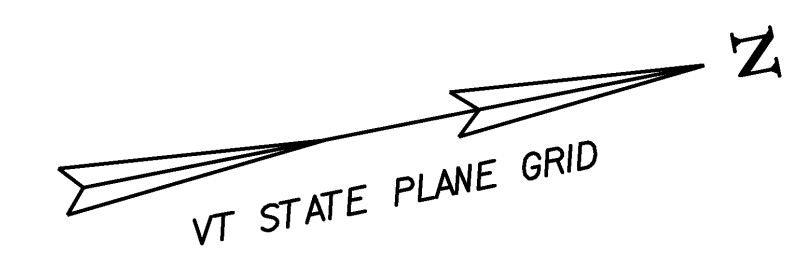
SIGN POSTS
SQUARE STEEL
50 mm, 3.9 kg/m
W/ ANCHOR

FAULKNER, ABIGAIL D.
& GUION, HOBART G. JR.

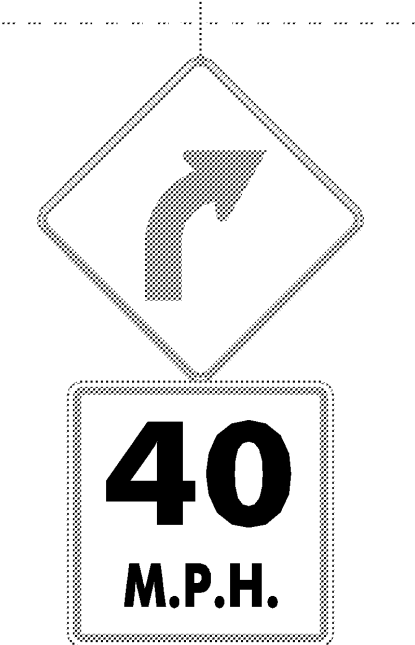
**STA 1+135 LT
R&S**

**STA 1+193 LT
R&S**

**SPEED
LIMIT
40**



BEGIN ROW PROJECT
STP FEGC F 037-2(4) S
1+107.27RT. 7.94M (26.0')



**STA 1+115 RT
R&S**



**STA 1+192 RT
R&S**

- ① EXISTING CULVERT - DO NOT DISTURB
- ② STA 1+128.1 LT
SPECIAL DITCH W/ STONE FILL, TYPE I
- ③ STA 1+124.8 RT - 1+128.1 LT
NEW 600 x 18M OPTION PIPE
W/ NEW 1.2 x 1.8 PCRCDI W/ TYPE B GRATES (2)
NEW 1.2 x 2.4 STONE FILL PAD @ OUTLET - TYPE II STONE
- ④ STA 1+180.0 LT. - RT.
NEW 450 x 16M OPTION PIPE W/ NEW CONCRETE HEADWALL @ INLET
NEW INLET DITCH WITH STONE FILL, TYPE I
NEW 1.0 x 2.0 STONE FILL PAD @ OUTLET - TYPE I STONE
- ⑤ STA 1+207.7 EXISTING CULVERT - REMOVE AND DELIVER
TO N. MONTPELIER DISTRICT GARAGE - TELEPHONE 454-7717

REMOVAL OF EXISTING
DELINEATOR
1+207.600 RT
1+208.700 LT

REMOVAL & DISPOSAL
OF GUARDRAIL
1+114.800 - 1+127.710 RT

HD STEEL BEAM GUARDRAIL,
GALVANIZED
1+114.800 - 1+220.000 RT

COLD PLANING BITUMINOUS PAVEMENT
1+110.000 - 1+130.000

REMOVING SIGNS
1+115 RT (2)
1+135 LT (2)
1+193 LT
1+193 RT

ERECTING SALVAGED SIGNS
1+115 RT (2)
1+193 LT

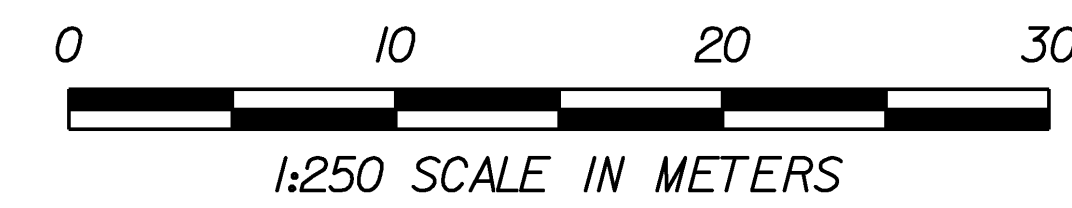
EROSION CONTROL² DETAIL ON
R.O.W. SHEET 10 OF 17

DURABLE 100 MM WHITE LINE, THERMOPLASTIC
1+110.000 - 1+220.000 LT
1+110.000 - 1+220.000 RT

DURABLE 100 MM YELLOW LINE, THERMOPLASTIC
1+110.000 - 1+220.000 LT & RT

LINES SHOWN ON THIS PLAN AS EXISTING
PROPERTY LINES (P/L) ARE BELIEVED TO
BE ACCURATE BUT SHOULD NOT BE RELIED
UPON FOR PURPOSES UNRELATED TO THE
STATE OF VERMONT'S ACQUISITION OF LAND
AND RIGHTS FOR THIS PROJECT.

NOTE: THERE IS A SIGN PROJECT CURRENTLY UNDER CONSTRUCTION
THAT MAY CHANGE THE TYPE/LOCATION OF SIGNS. EACH
SIGN SHALL BE REMOVED, SALVAGED, AND ERRECTED AS
CLOSE TO ITS EXISTING LOCATION AS POSSIBLE.



**FOR R.O.W.
USE ONLY**

THIS PROJECT IS A/K/A
EAST MONTPELIER STP FEGC F 037-2(4)S
LAYOUT SHEET #1

PROJECT NAME: EAST MONTPELIER	PLOT DATE: 14-JUL-2009
PROJECT NUMBER: STP 037-2(9)	DRAWN BY: R. PELLETT
FILE NAME: 78f200\str\sf200bdr.dgn	DESIGNED BY: J. LACROIX
PROJECT LEADER: K. HIGGINS	CHECKED BY: J. LACROIX
R.O.W. SHEET 15 OF 17	SHEET 41 OF 67