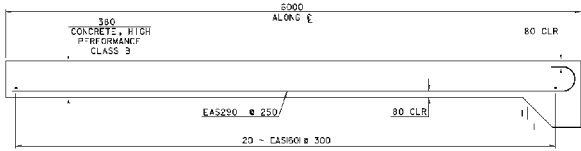


**APPROACH SLAB #1 PLAN**

**APPROACH SLAB #2 PLAN**

**CORNER DETAIL**  
TYPICAL FOR ACUTE ANGLES ON LINTS

**NOTE:**  
 NF = NEAR FACE  
 FF = FAR FACE  
 EF = EACH FACE  
 ▲ = CUT TO FIT IN FIELD  
 80 CLEAR, UNLESS OTHERWISE SPECIFIED ON THE PLANS.  
 660 BAR LAP UNLESS OTHERWISE SPECIFIED ON THE PLANS.



**SECTION A-A**

**APPROACH SLAB DETAILS**

PROJECT NAME:	EAST MONTPELIER	PLLOT DATE:	8-JUL-2009
PROJECT NUMBER:	STP 037-2(9)	DRAWN BY:	M. LITTLE
FILE NAME:	787202.dwg	DESIGNED BY:	J. LACROIX
PROJECT LEADER:	K. HIGGINS	CHECKED BY:	J. LACROIX
PROJECT LEADER:	K. HIGGINS	SHEET:	34 OF 67