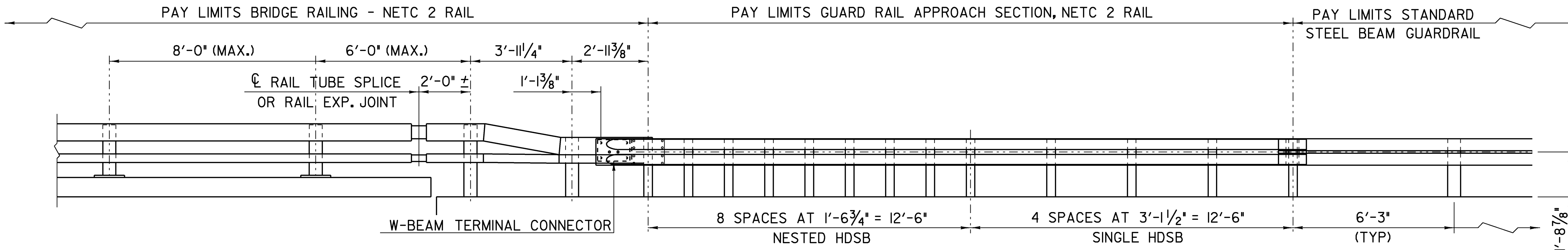


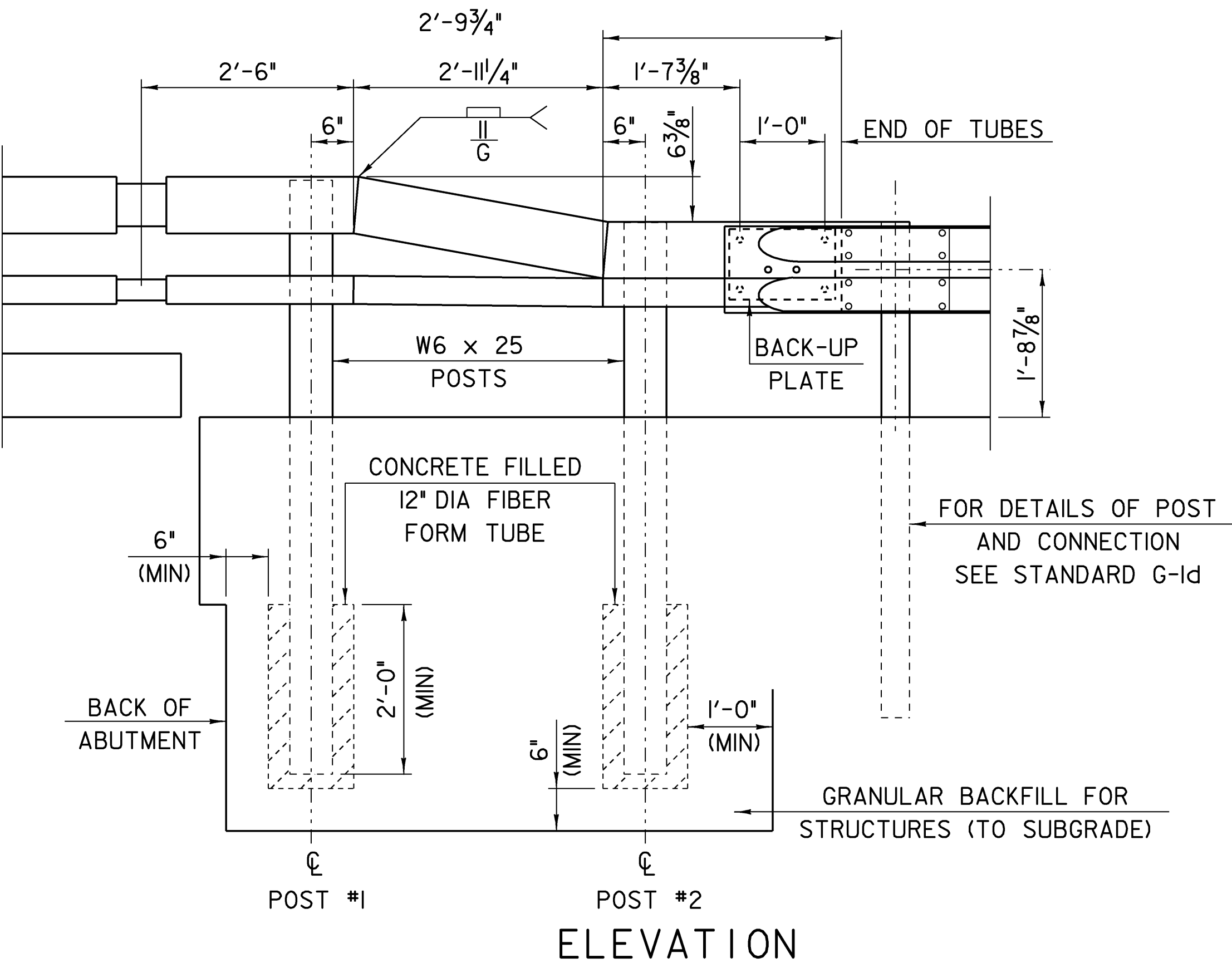
Notes:

1. REFER TO SHEET S-360a FOR ADDITIONAL DETAILS, NOTES AND MATERIAL SPECIFICATIONS.
2. TO FACILITATE FIELD FIT - UP OF THE TRANSITION RAILING, POSTS SHALL BE SET LOOSELY INTO FIBER FORM TUBES WHILE TRANSITION PARTS ARE BEING ASSEMBLED. POST HOLES SHALL BE BACKFILLED WITH A CONCRETE MIX APPROVED BY THE ENGINEER. PAYMENT FOR COMPONENTS, INCLUDING BACKUP PLATE AND END TERMINAL CONNECTOR FOR GUARD RAIL, AUGERING, FIBER FORM TUBES AND CONCRETE, AND INSTALLATION SHALL BE CONSIDERED INCIDENTAL TO BRIDGE RAILING, GALVANIZED NETC 2 RAIL.
3. RETRO REFLECTIVE MATERIAL SHALL MEET REQUIREMENTS OF SUBSECTION 750.08 AND SHALL BE OF ENCAPSULATED LENS SILVER OR AMBER. AMBER IS TO BE INSTALLED ON THE DRIVER'S LEFT AND SILVER ON THEIR RIGHT.
4. ALL APPROACH RAIL SPLICES SHALL BE LAPPED IN THE DIRECTION OF TRAFFIC FLOW.
5. SEE STANDARDS G-1 AND G-1d FOR ADDITIONAL INFORMATION.

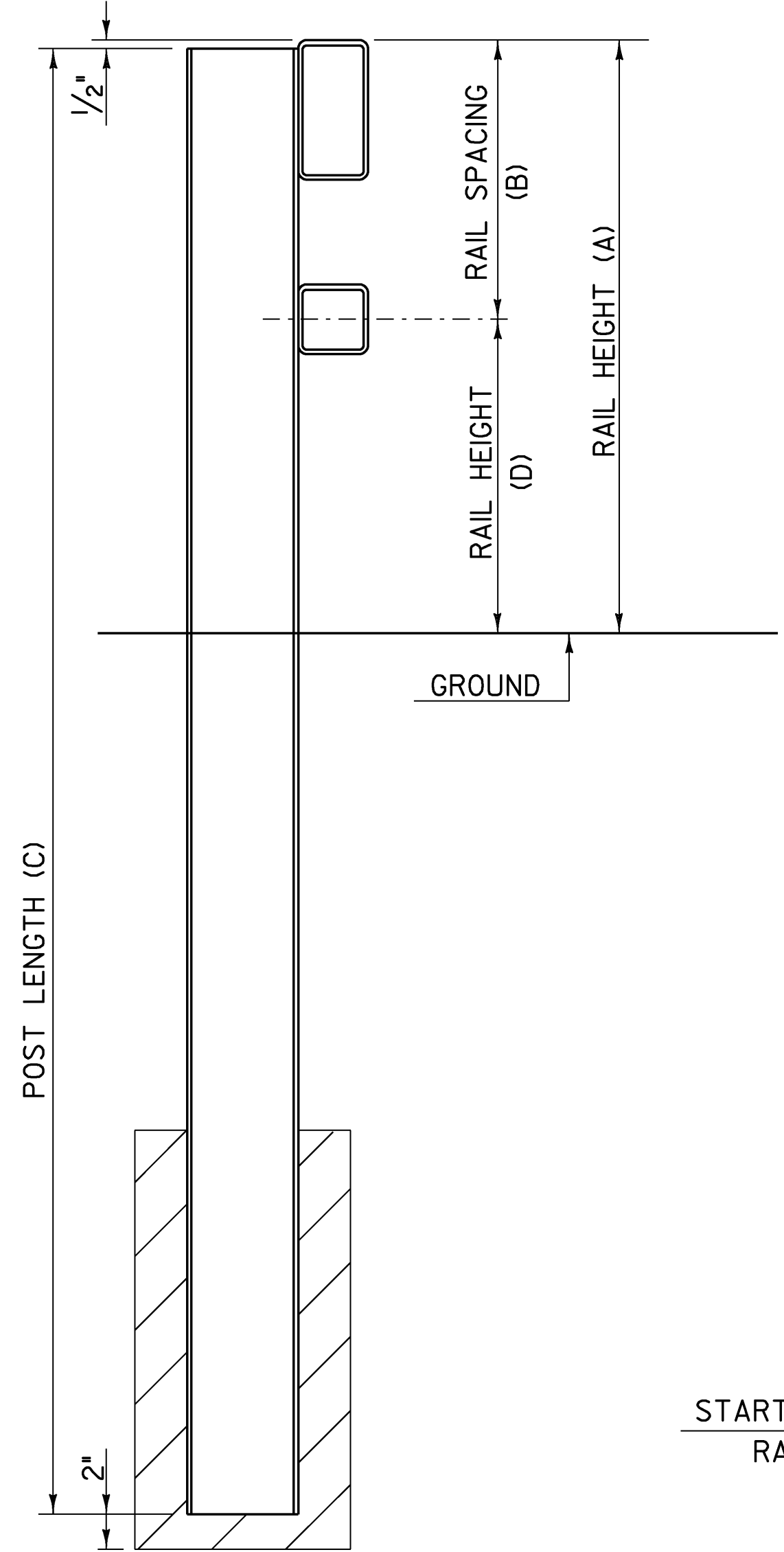


RAILING TRANSITION ELEVATION

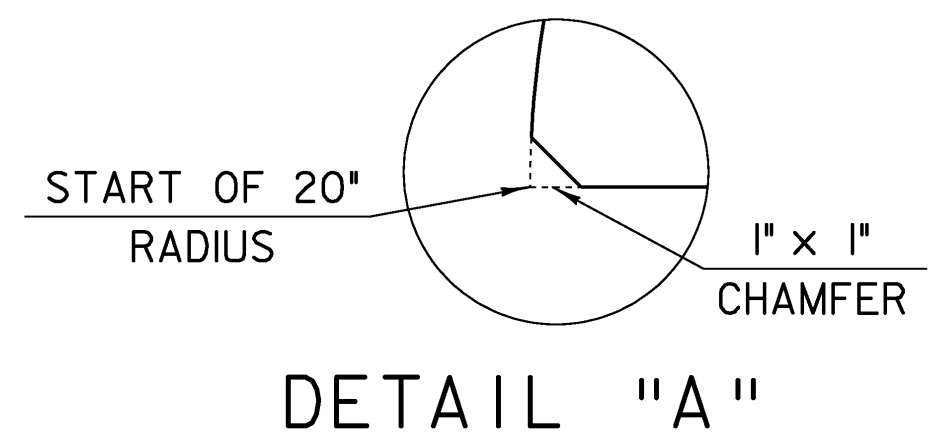
ALL RAIL SHALL BE LAPPED IN THE DIRECTION OF TRAVEL



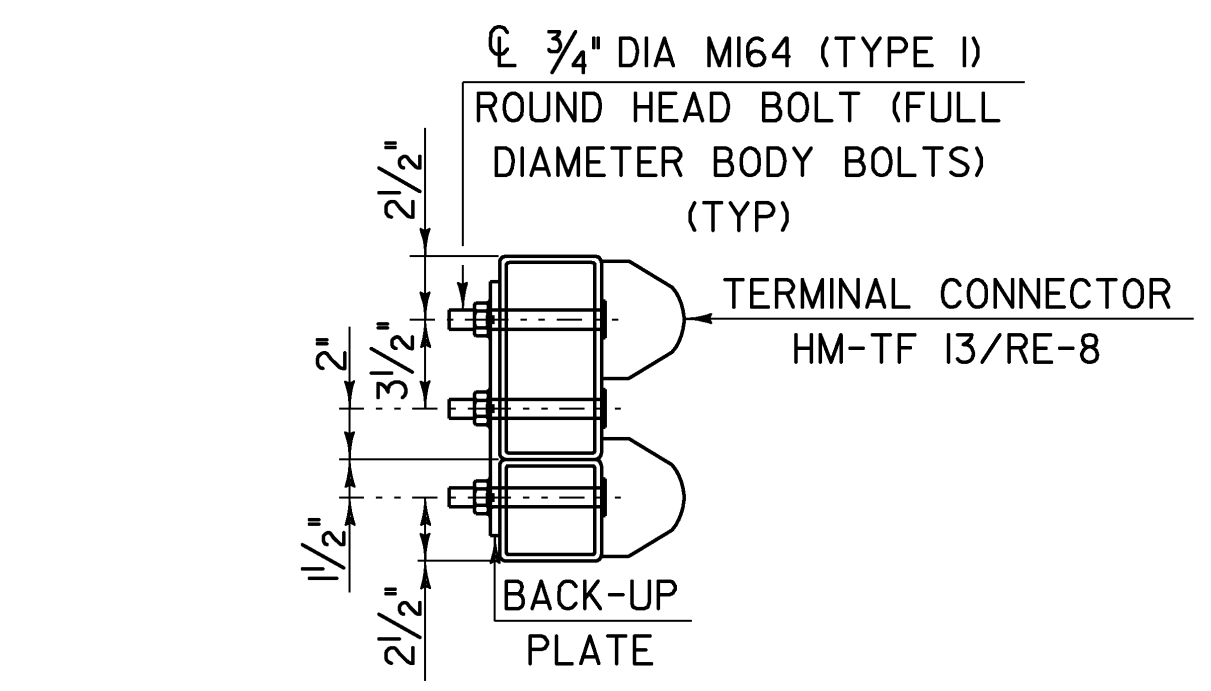
ELEVATION



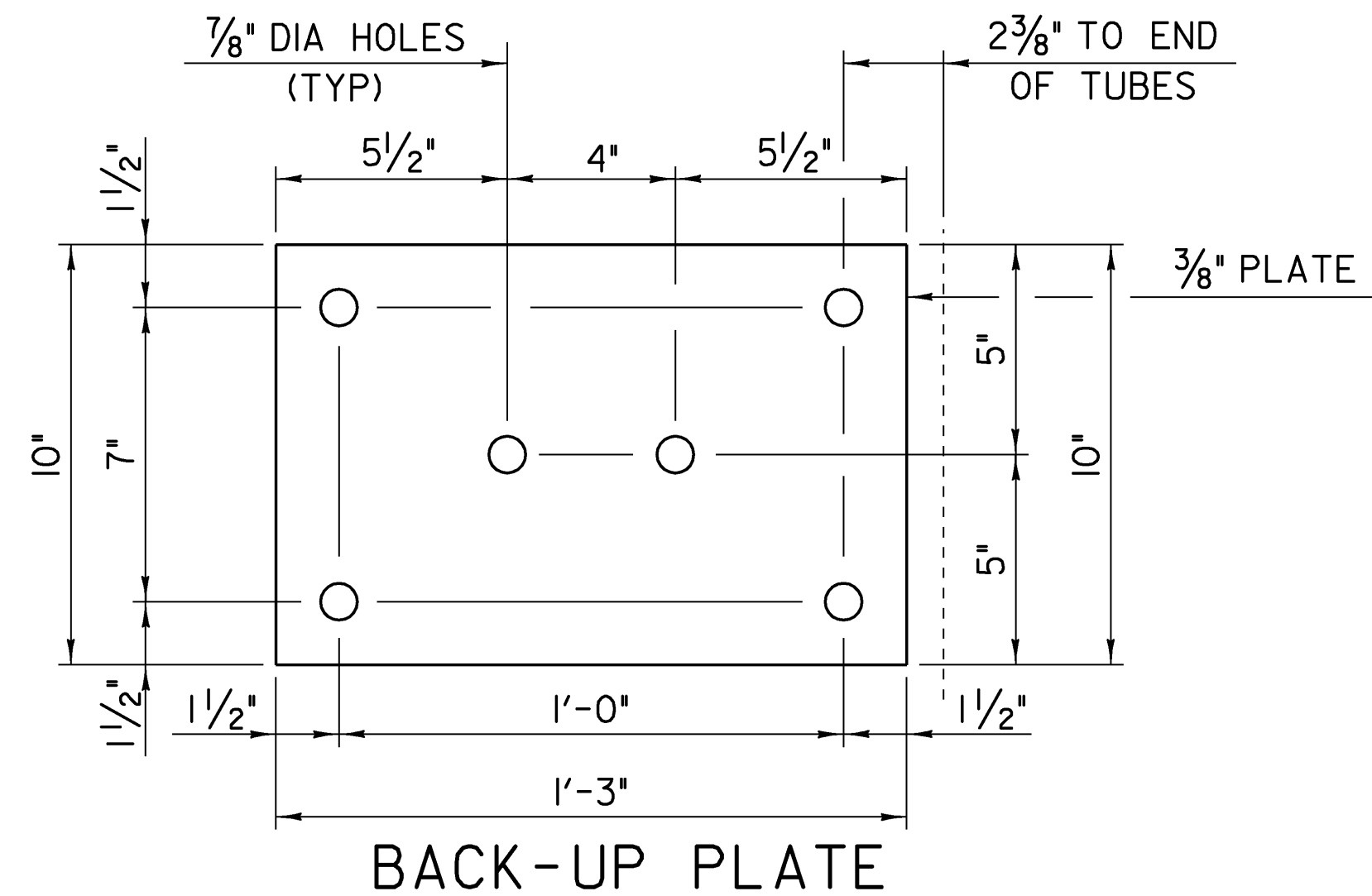
TYPICAL SECTION



DETAIL "A"

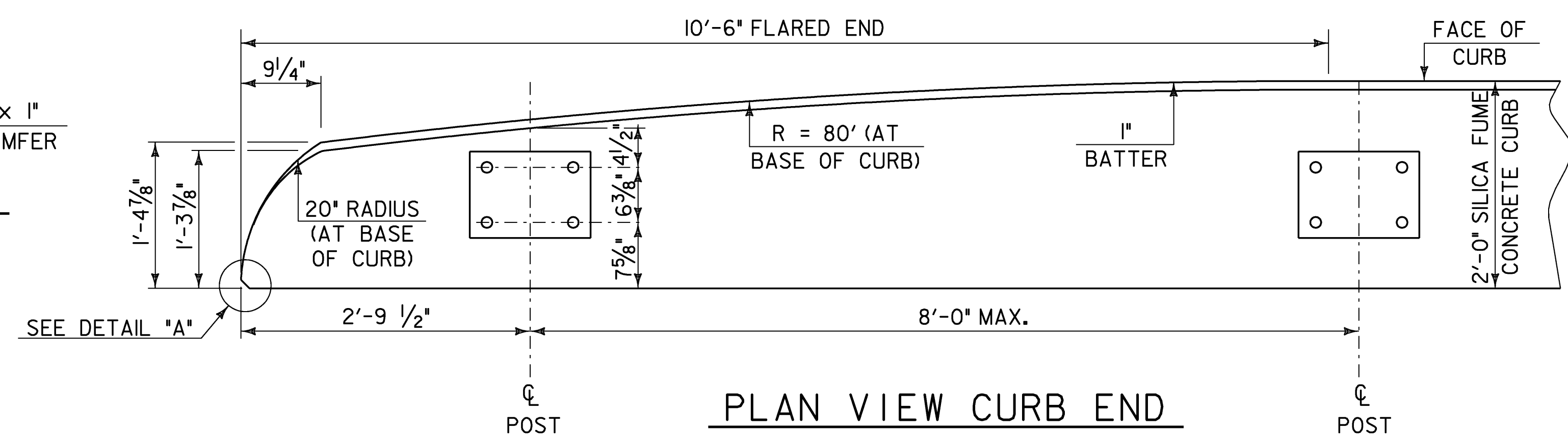


SECTION THROUGH GUARD RAIL CONNECTION AT TERMINAL CONNECTOR



BACK-UP PLATE

POST NUMBER	RAIL HEIGHT (A)	RAIL SPACING (B)	POST LENGTH (C)	RAIL HEIGHT (D)
1	2'-10"	1'-4"	7'-0"	1'-6"
2	2'-3 5/8"	10"	6'-5"	1'-5 5/8"



PLAN VIEW CURB END

DETAIL
S-36 Od

BRIDGE RAILING - NETC 2 RAIL
STEEL BEAM APPROACH RAIL

STANDARDS & OTHER
DETAILS REQUIRED: G-1, G-1d, S-360a, S-360c

PROJECT NAME: EAST MONTPELIER
PROJECT NUMBER: STP 037-2(9)

FILE NAME: 78f200\str\srf200ral.dgn PLOT DATE: 14-JUL-2009
PROJECT LEADER: K. HIGGINS DRAWN BY: STRUCTURES
DESIGNED BY: STRUCTURES CHECKED BY: STRUCTURES
RAIL DETAIL SHEET SHEET 28 OF 67