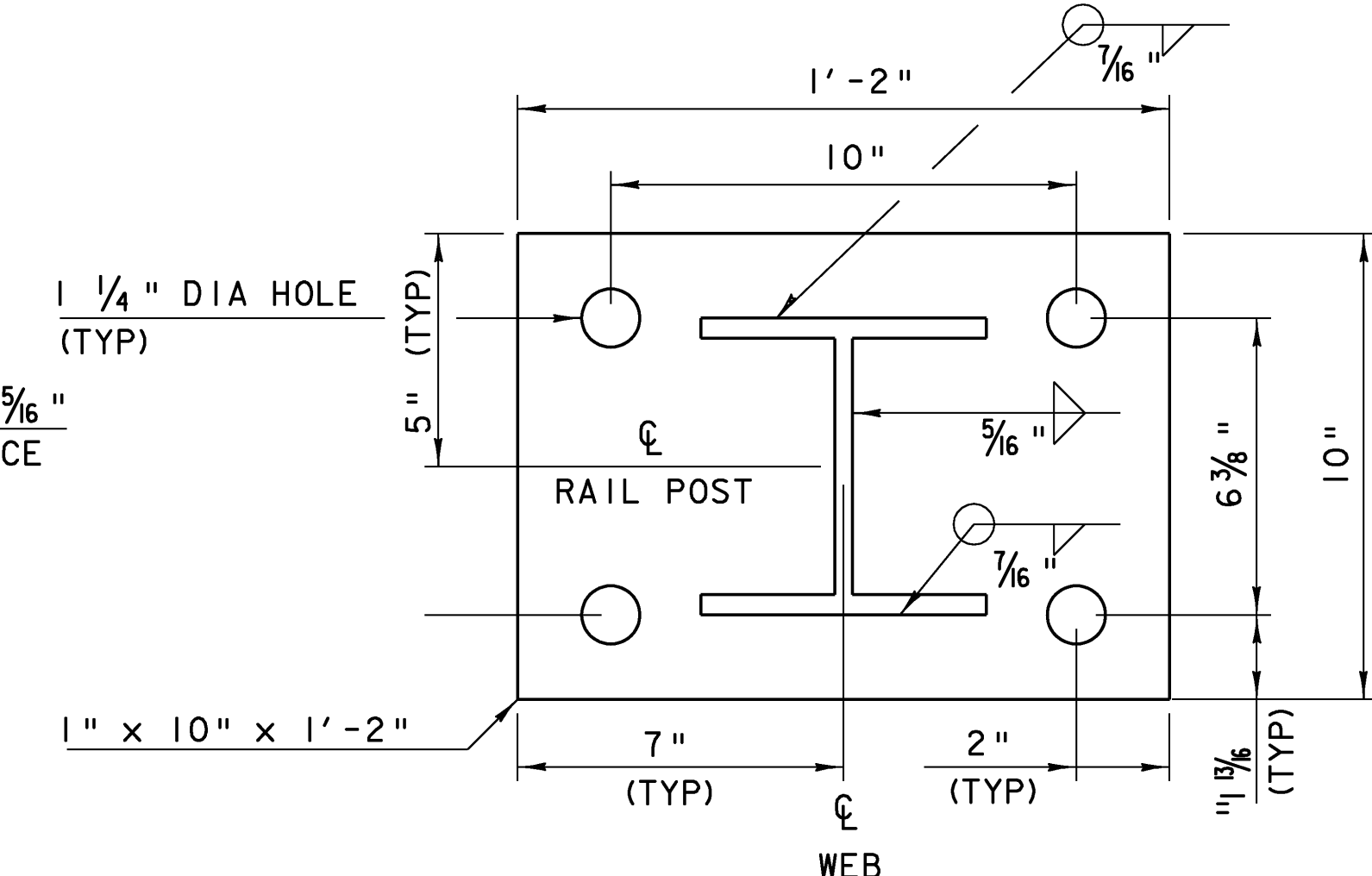
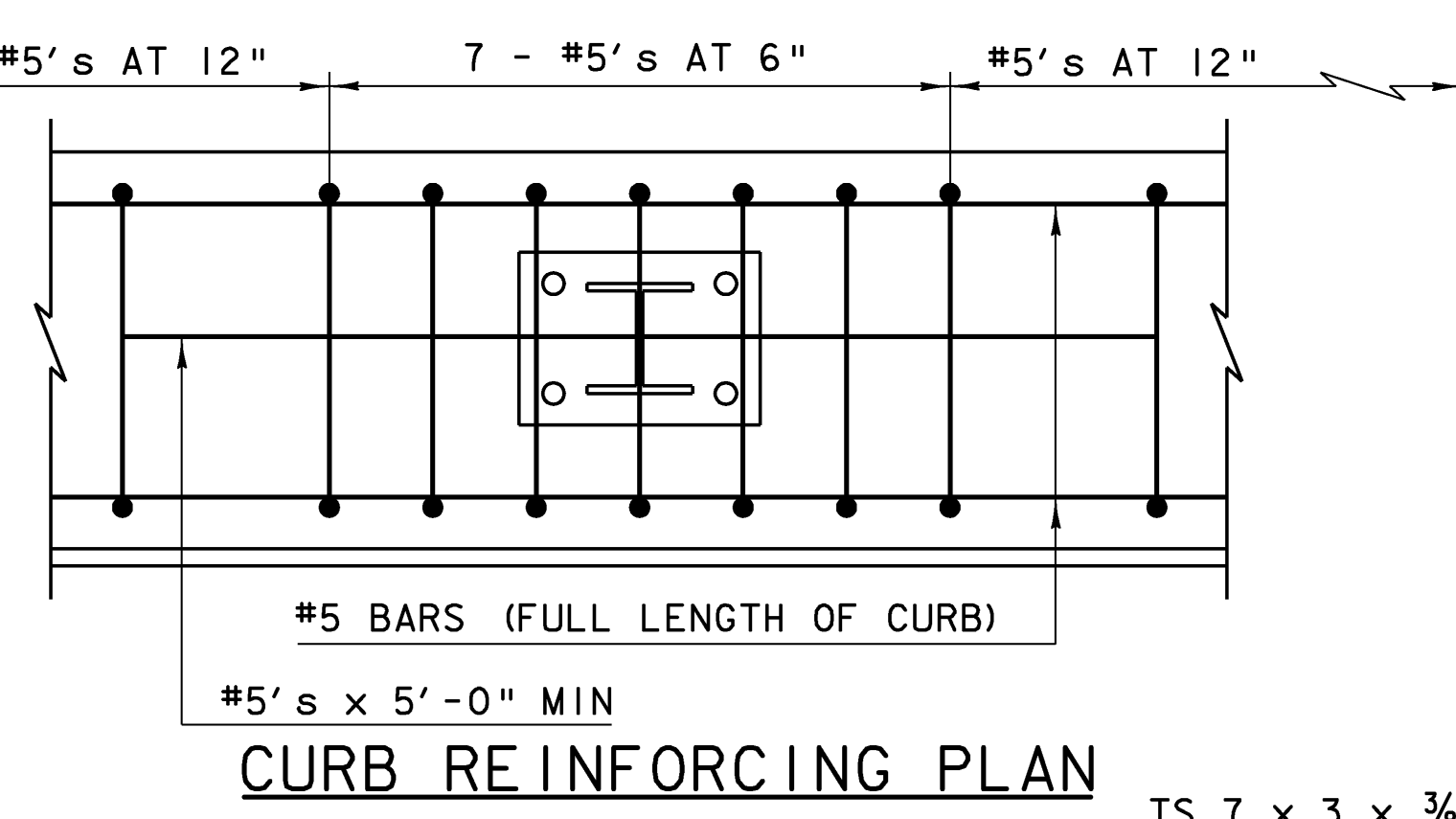
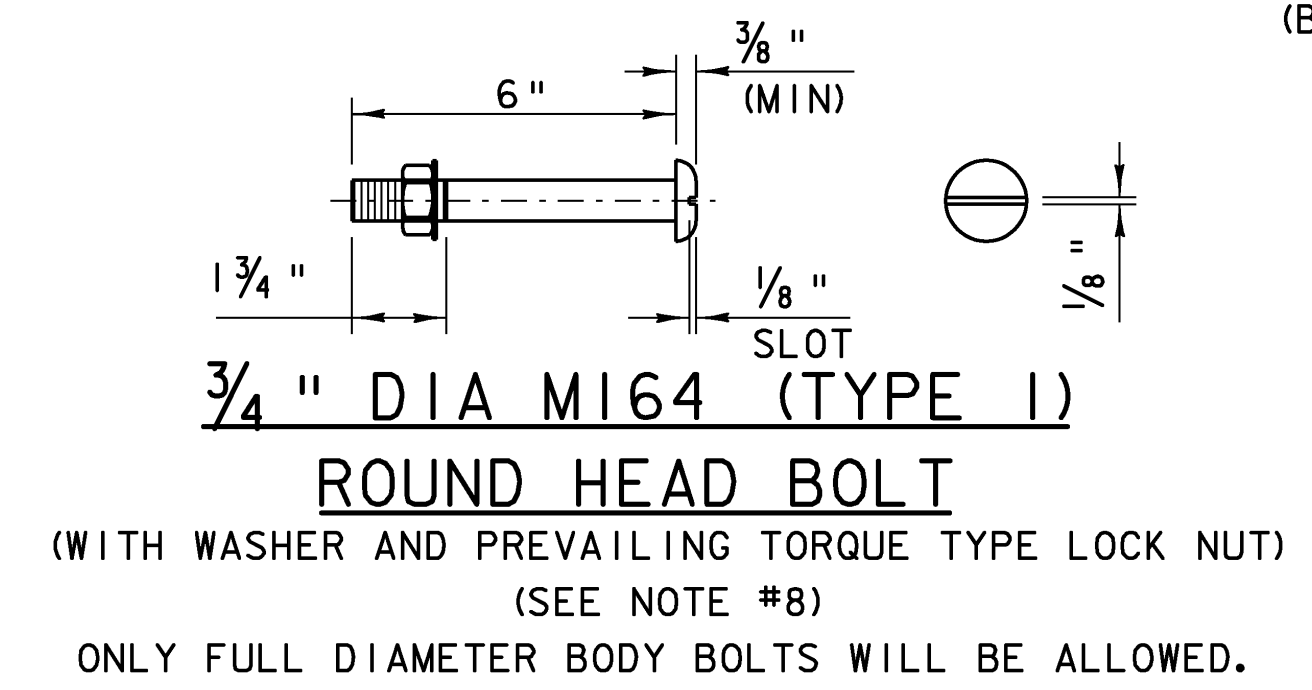
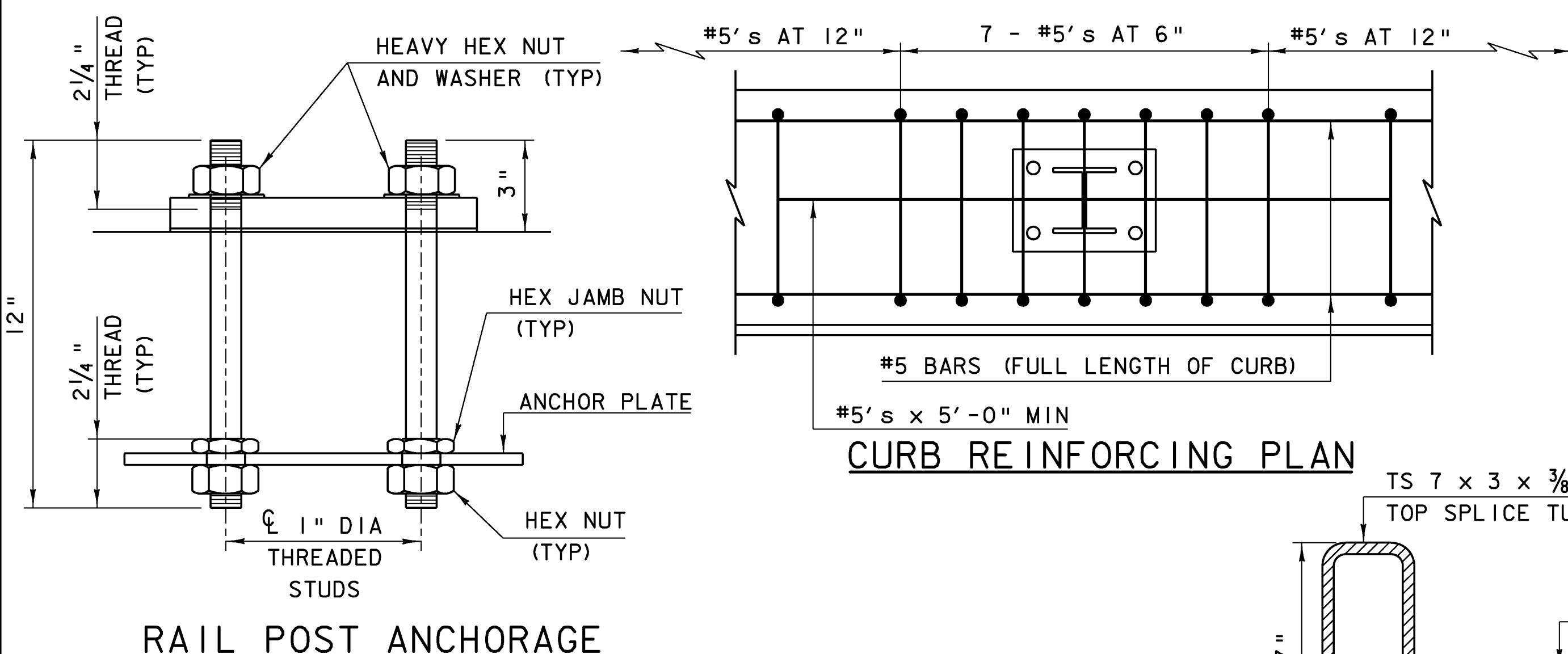


SPLICE TABLE					
T	A	B	C	L	X
N/A	4"	2"	--	20"	3/4"
EXPANSION JOINT TABLE					
<4"	4"	2"	2 1/2"	20"	2 1/2"
>4" <6 1/2"	5 1/2"	2 3/8"	3 1/2"	23 3/4"	4"
>6 1/2" <9"	6 1/2"	3 3/8"	9"*	27 3/4"	5"
>9" <13"	8 1/2"	4 3/8"	11"*	33 3/4"	7"

T = TOTAL MOVEMENT AT RAIL EXPANSION JOINT AS SHOWN IN THE CONTRACT PLANS. SEE NOTE 6.  
 \* = SINGLE SLOT

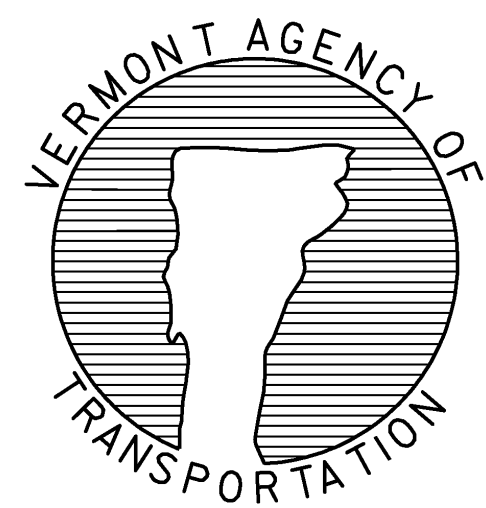
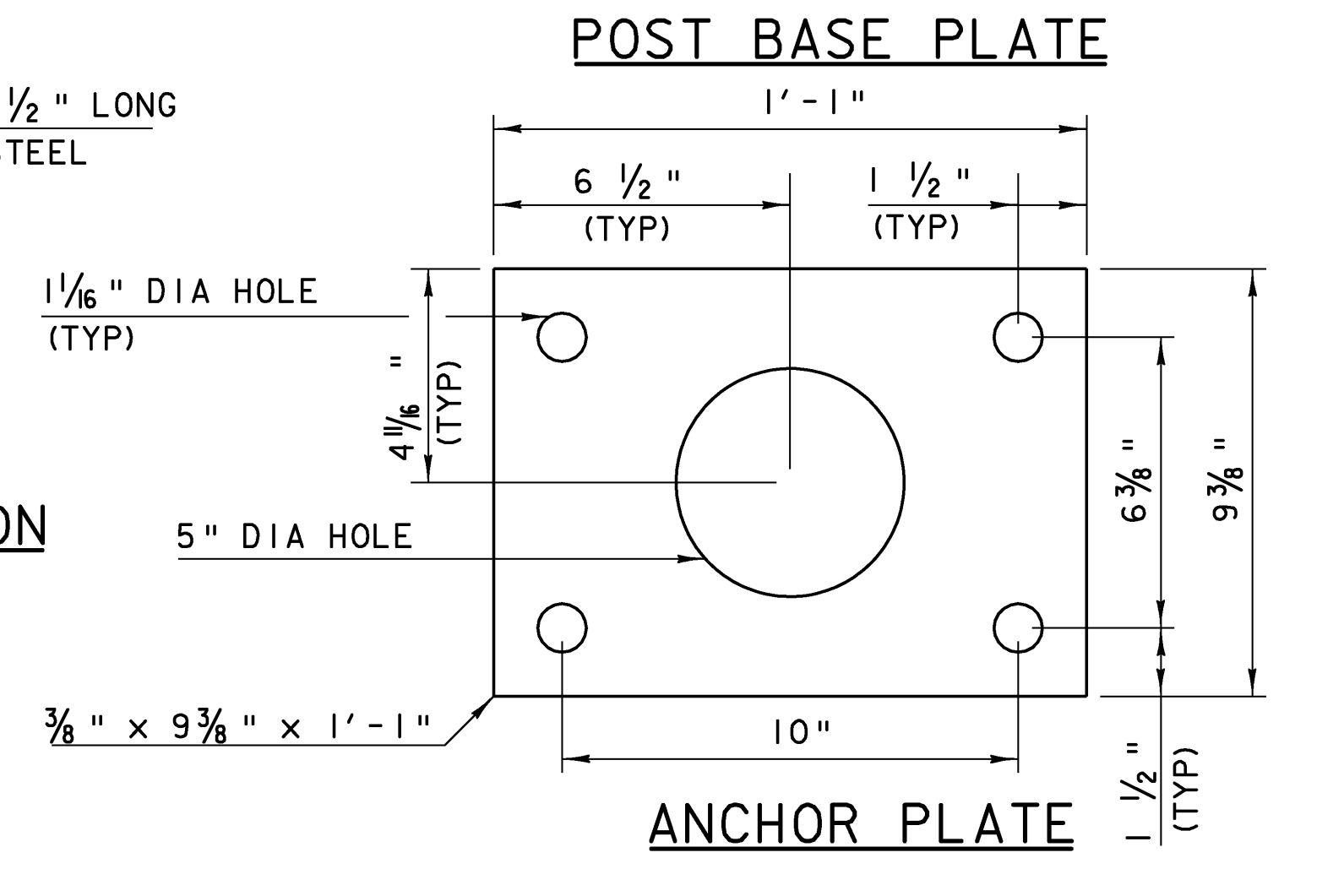
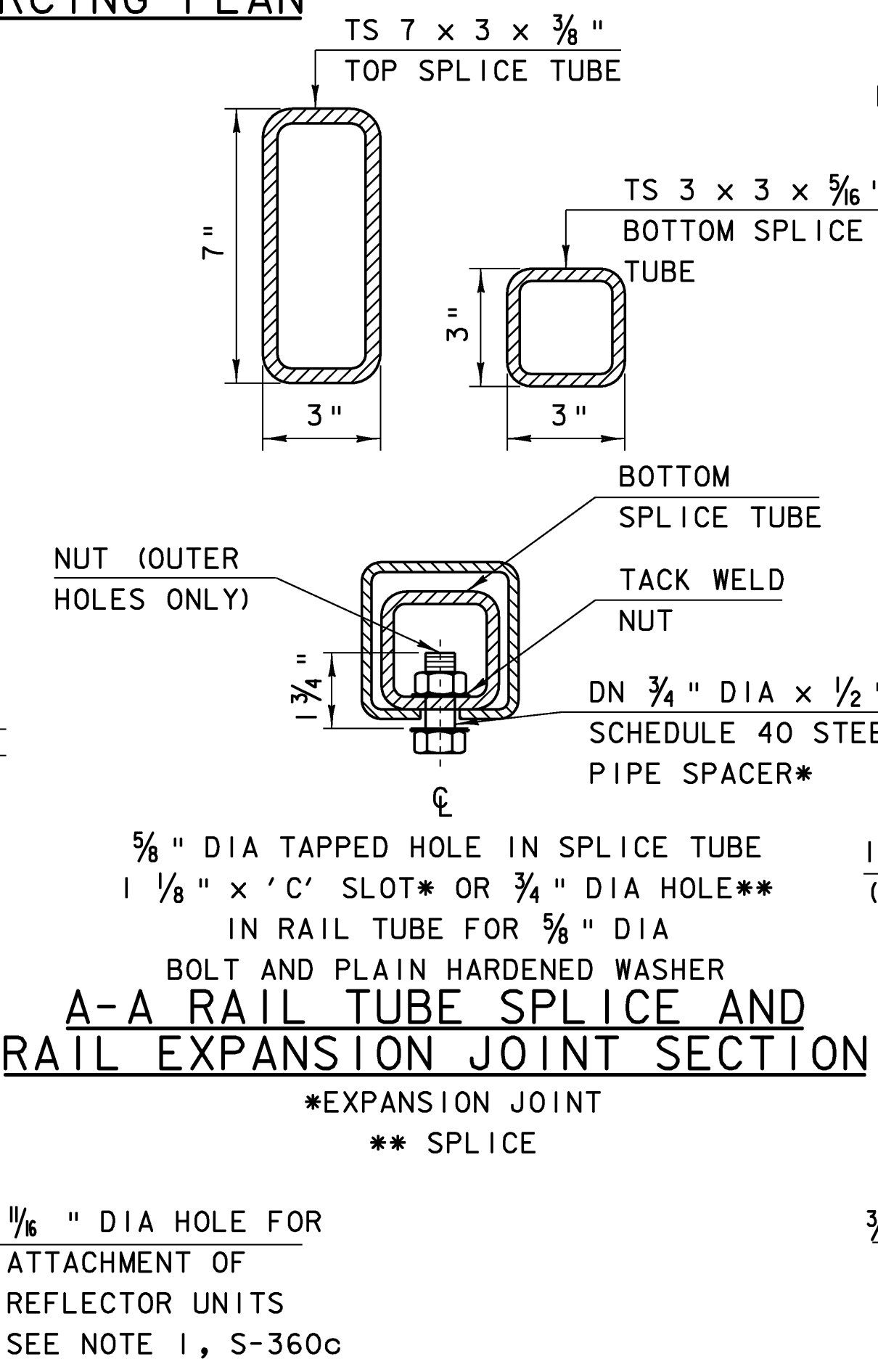
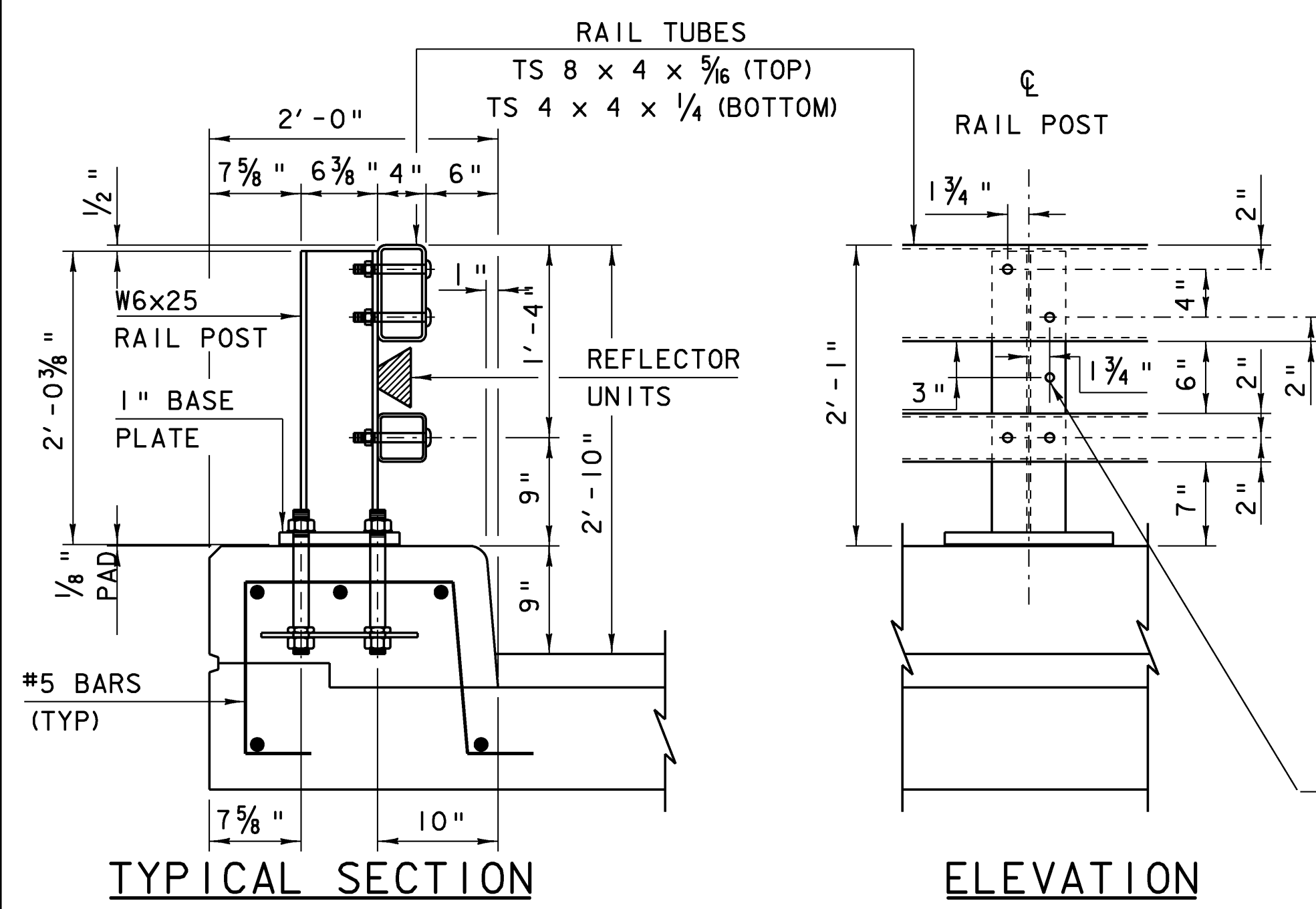


**NOTES**

- ALL WORK AND MATERIALS SHALL CONFORM TO SECTION 525.
- RAILING MATERIAL SHALL MEET THE REQUIREMENTS OF SECTION 732.
- ALL EXPOSED CUT OR SHEARED EDGES SHALL BE ROUNDED TO A 1/16" RADIUS AND BE FREE OF BURRS.
- RAIL POSTS SHALL BE SET NORMAL TO GRADE.
- SECTIONS OF RAIL TUBE SHALL BE ATTACHED TO A MINIMUM OF TWO BRIDGE RAIL POSTS AND PREFERABLY TO AT LEAST FOUR POSTS.
- RAIL TUBE EXPANSION JOINTS SHALL BE PROVIDED IN ANY RAIL BAY SPANNING THE END OF AN INTEGRAL ABUTMENT BRIDGE AND AT ALL SUPERSTRUCTURE EXPANSION JOINTS. EXPANSION JOINT WIDTH SHALL BE "X" AT 45°F AND WILL BE ADJUSTED IN THE FIELD BY THE ENGINEER FOR OTHER TEMPERATURES.
- RAIL POSTS ANCHORING NUTS SHALL BE TIGHTENED TO A SNUG FIT AND GIVEN AN ADDITIONAL ONE-EIGHTH TURN.
- RAIL TUBES SHALL BE ATTACHED USING 3/4" FULL DIAMETER BODY AASHTO M164 (TYPE 1) ROUND HEAD BOLTS INSERTED THROUGH THE FACE OF THE TUBE. HOLES IN POSTS SHALL BE 1/16" LARGER THAN THE BOLT SIZE.
- HOLES IN RAILS FOR RAIL TUBE ATTACHMENT MAY BE FIELD-DRILLED. HOLES SHALL BE COATED WITH AN APPROVED ZINC-RICH PAINT PRIOR TO ERECTION.
- IF THERE IS A CONFLICT BETWEEN THESE STANDARD DETAILS AND THE DESIGN, THE REQUIREMENTS OF THE DESIGN DRAWINGS SHALL BE FOLLOWED.
- ANY BENDING OF RAIL SHALL BE DONE AT A FABRICATION PLANT, ACCORDING TO A PROCEDURE PROVIDED BY THE FABRICATOR.
- THE FABRICATOR SHALL SUBMIT DRAWINGS INCLUDING WELDING PROCEDURES IN ACCORDANCE WITH SECTION 105.

**MATERIALS**

1/8" PAD SHALL COMPLY WITH STANDARD SPECIFICATION SUBSECTION 731.01 OR 731.02.



DETAIL  
 S-360a

BRIDGE RAILING,  
 GALVANIZED NETC 2 RAIL

**OTHER DETAILS REQUIRED: S-360c**

PROJECT NAME: EAST MONTPELIER  
 PROJECT NUMBER: STP 037-2(9)

FILE NAME: 78f200\str\sf200ral.dgn PLOT DATE: 14-JUL-2009  
 PROJECT LEADER: K. HIGGINS DRAWN BY: STRUCTURES  
 DESIGNED BY: STRUCTURES CHECKED BY: STRUCTURES  
 RAIL DETAIL SHEET SHEET 25 OF 67