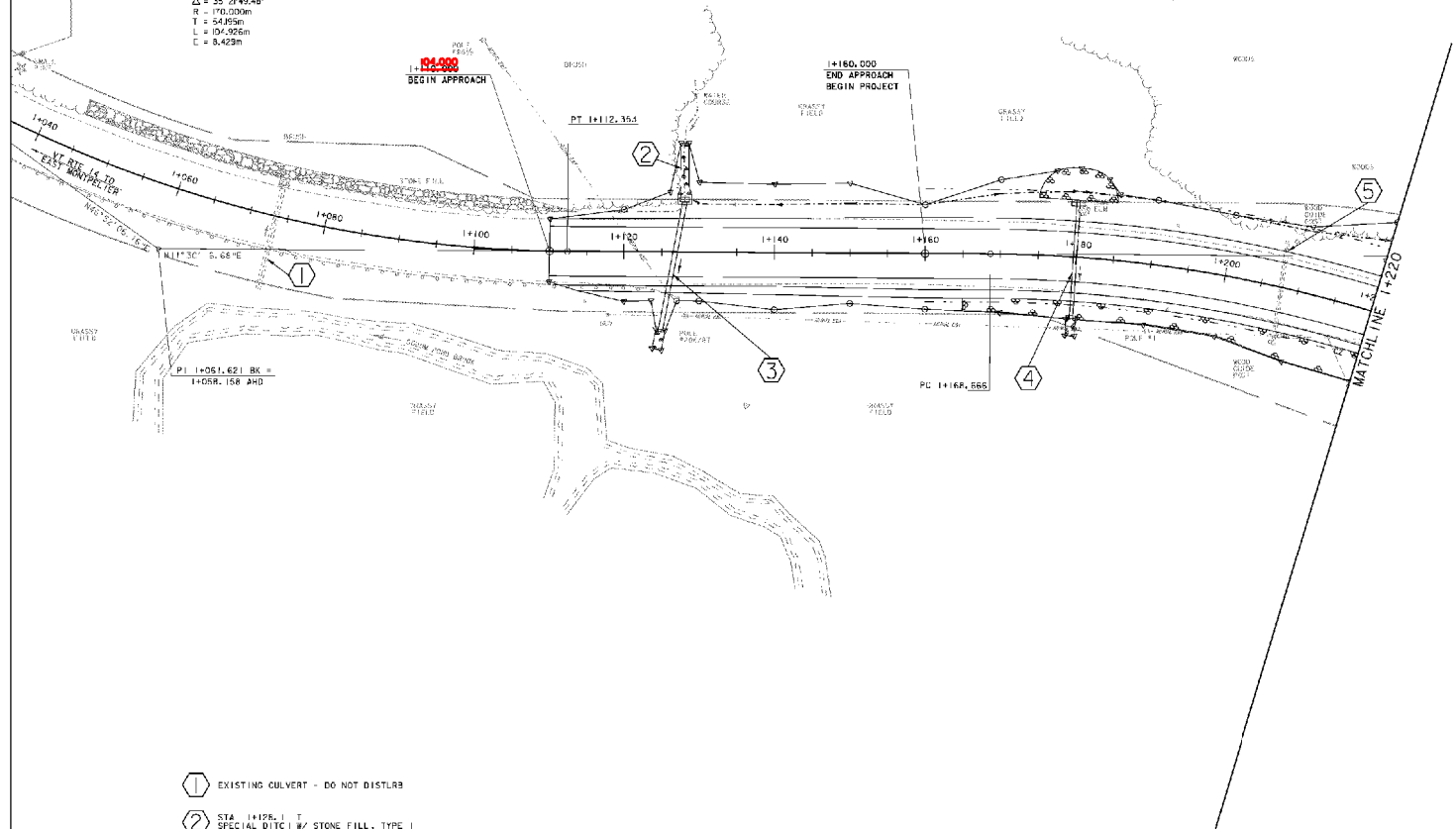
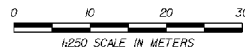


Benches Marked At
1+000.00m I.L.T.
Spikes in Right
Elev. 200.500

VTH CURVE I
 $\Delta = 35^{\circ}29'49.49''$
 $R = 170.000m$
 $T = 54.959m$
 $L = 91.902m$
 $C = 8.429m$



- ① EXISTING CULTURE - DO NOT DISTURB
- ② STA 1+125.1 T SPECIAL DITCH W/ STONE FILL, TYPE I
- ③ STA 1+124.0 RT - 1+129.1 LT NEW 800 X 180 OPTION PIPE W/ NEW 1.2 X 2.4 STONE FILL PAD & GRATES @ NEW 1.2 X 2.4 STONE FILL PAD @ OUTLET - TYPE II STONE
- ④ STA 1+180.0 LT - RT, NEW 450 X 150 OPTION PIPE W/ NEW CONCRETE HEADWALL @ INLET NEW INLET DITCH WITH STONE FILL TYPE NEW 1.0 X 2.0 STONE FILL PAD @ OUTLET - TYPE STONE
- ⑤ STA 1+207.7 EXISTING CULTURE - ~~REMOVE AND BELIEVER~~



DRAINAGE SHEET #1	
PROJECT NAME:	EAST MONTPELER
PROJECT NUMBER:	STP 037-2(9)
FILE NAME:	28f200\metric\st200\dr.dgn
PROJECT LEADER:	K. HIGGINS
DRAWN BY:	R. PELLETT
DATE CHECKED BY:	J. LACROIX
DATE:	4-JUL-2009
SHEET:	18 OF 67