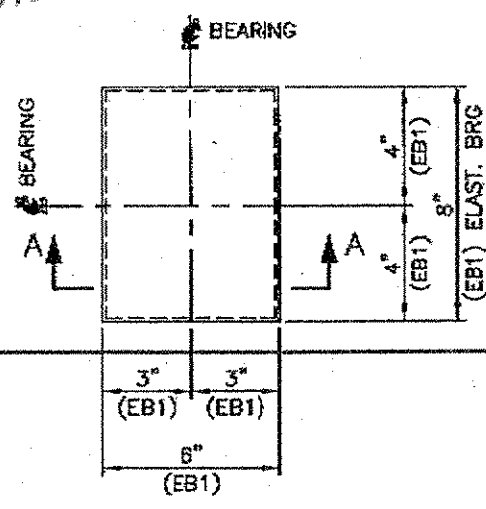


**32 LAMINATED ELASTOMERIC BEARING PADS, EB1**  
 LAMINATED ELASTOMERIC BEARING 2" x 6" x 8"  
 IN ACCORDANCE WITH THE STATE OF VERMONT AGENCY OF  
 TRANSPORTATION THE BEARINGS SHALL MEET AASHTO M251  
 STANDARD SPECIFICATION FOR HIGHWAY BRIDGES  
 ELASTOMER - 60 DUROMETER NEOPRENE GR. 3  
 SHIMS - AASHTO M284 GR. 50  
 BEARINGS THICKNESS TOLERANCE OF  $\pm 1/4$ " -0"  
 TEMPERATURE RANGE: 60F  
 MAXIMUM BEARING STRESS: 1000 psi  
 DESIGN ROTATION: 0.016 rad

RDL: 28kips 48"  
 RLL41: 25kips 33kips

RECEIVED  
 JUL 1 2007  
 AS NOTED  
 R/W 8/307



**ELASTOMERIC BEARINGS**  
 TYPE: LAMINATED  
 ROUTE NO. VT 4A  
 OVER CASTLETON RIVER

|       |         |            |
|-------|---------|------------|
| STATE | COUNTY  | BRIDGE NO. |
| VT    | RUTLAND | 8          |

PROJECT NO.: RS 0142 (10)  
**DYNAMIC RUBBER** 1501 ROCKY RIDGE RD.  
 A DIVISION OF COSMEC, INC. ATHENS, VT 05611

|              |                |                 |
|--------------|----------------|-----------------|
| SCALE: NONE  | DRAWN BY: K/W  | CHECKED BY: S/W |
| SHEET 1 OF 1 | DATE: 7/2/2007 | DATE: 7/2/2007  |

|                            |                |      |
|----------------------------|----------------|------|
| CUSTOMER                   | DRAWING NUMBER | REV. |
| F.W. WHITCOMB CONSTRUCTION | 9512-D1        | 0    |

067bb