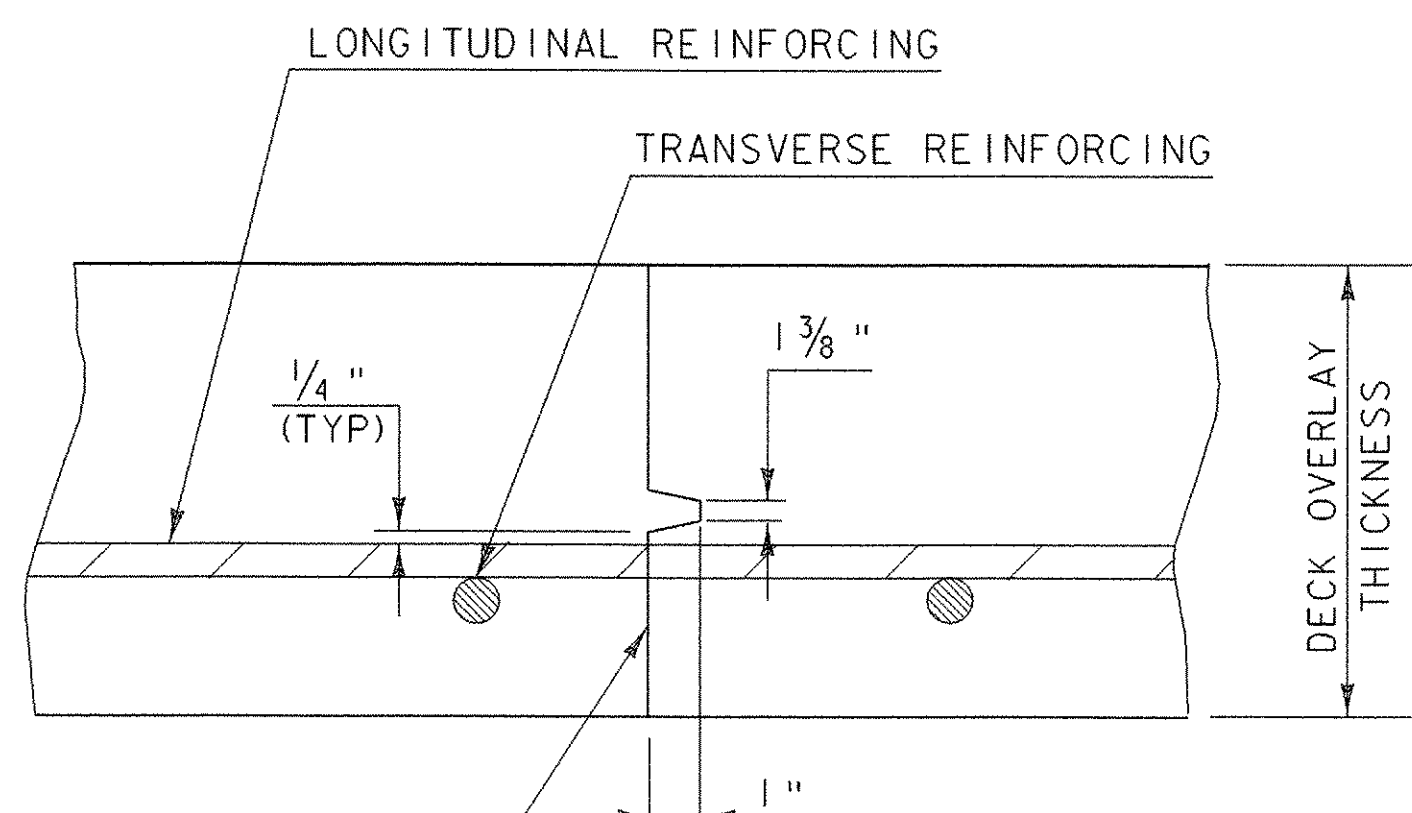


JOINT BETWEEN FASCIA AND WINGWALL

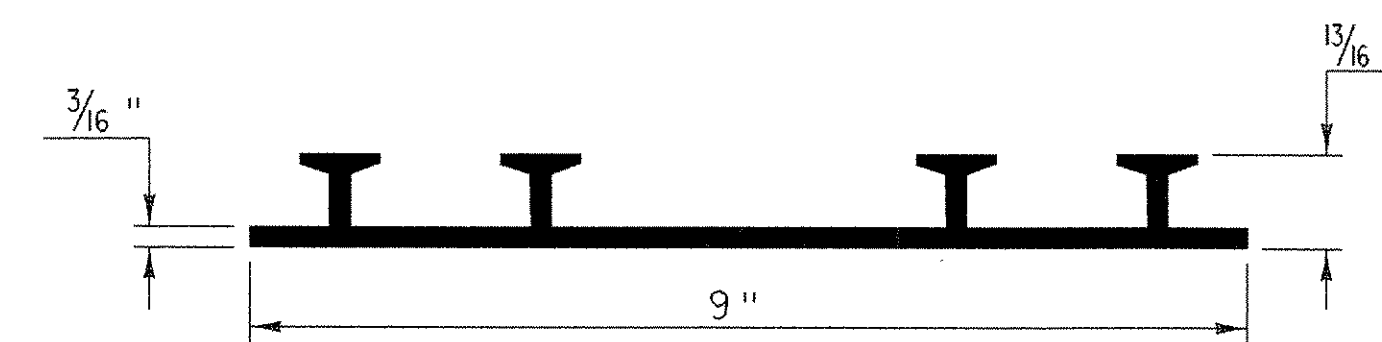
NTS



TRANSVERSE BRIDGE SLAB CONSTRUCTION JOINT DETAILS

NTS

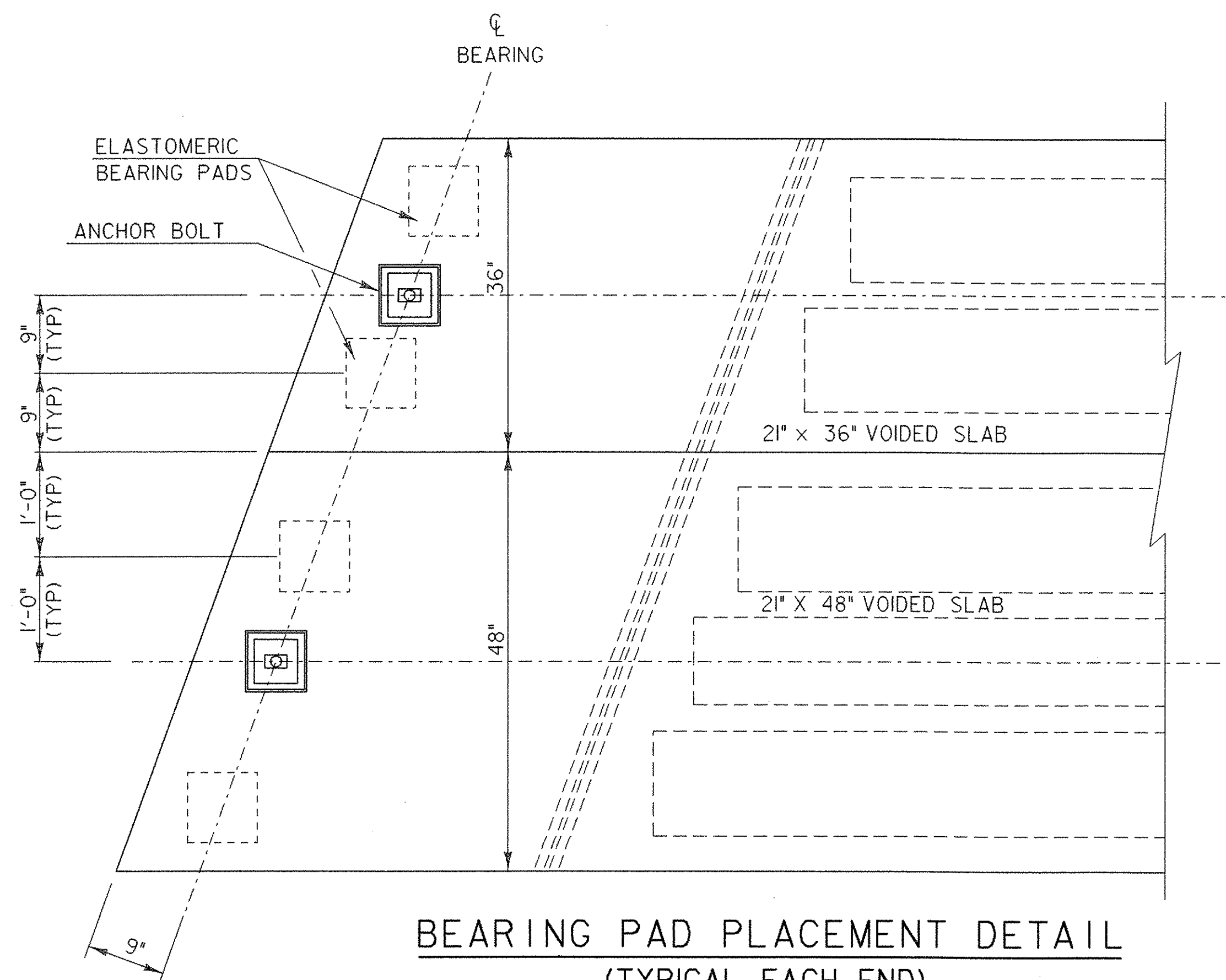
APPLY EPOXY BONDING COMPOUND BEFORE PLACING NEW CONCRETE. INCLUDE WITH COST BID FOR CONCRETE, HIGH PERFORMANCE CLASS AA



P.V.C. WATERSTOP FOR CONSTRUCTION JOINTS

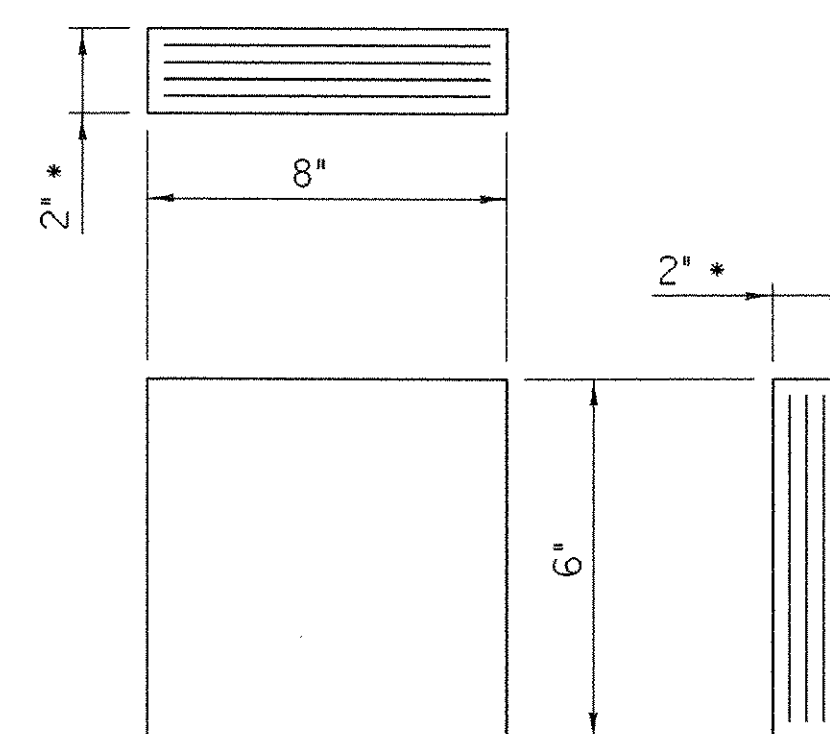
NTS

INCLUDE THE COSTS FOR P.V.C. WATERSTOP IN THE UNIT PRICE BID FOR CONCRETE, HIGH PERFORMANCE CLASS B. OTHER CONFIGURATIONS MAY BE USED UPON APPROVAL OF THE STRUCTURES ENGINEER.



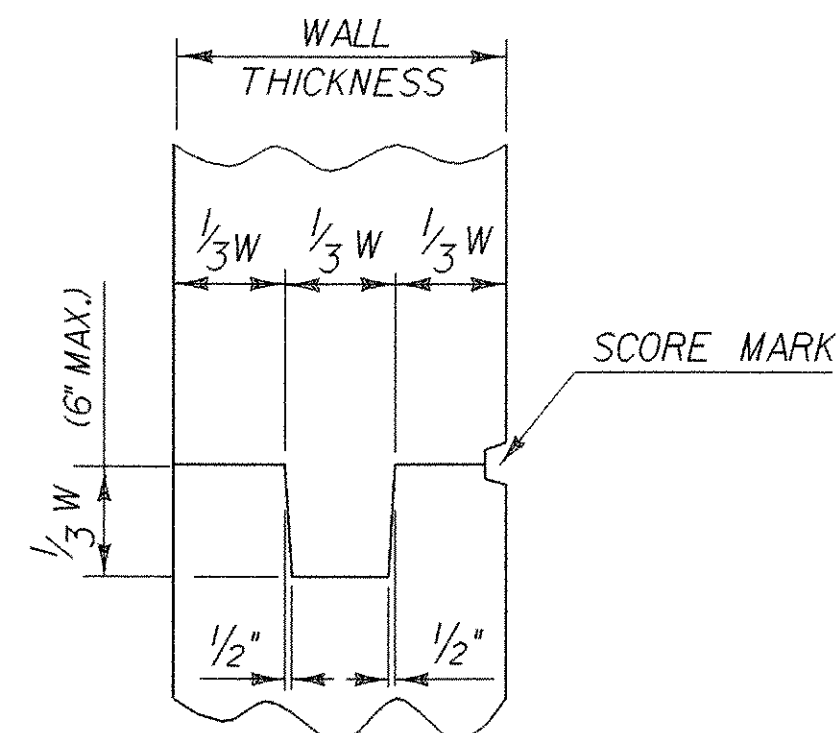
BEARING PAD PLACEMENT DETAIL

(TYPICAL EACH END)
SCALE 1" = 1'-0"
1 9 6 3 0 1 2



ELASTOMERIC BEARING DETAIL

* 3 - 3/8" LAYERS OF ELASTOMERIC ALTERNATING WITH 4 - 14 GAGE STEEL REINFORCING PLATES



TYPICAL CONCRETE CONSTRUCTION JOINT

NTS

NOTES

- ITEM 531.11, "BEARING DEVICE ASSEMBLY, ELASTOMERIC PAD" IS THE PAY ITEM FOR THE BEARINGS.
- ALTERNATE CONFIGURATIONS FOR ELASTOMERIC BEARINGS MAY BE SUBMITTED FOR APPROVAL. ANY ALTERNATE BEARING SUBMITTED SHALL BE DESIGNED AND CERTIFIED TO MEET THE LOADS AND CRITERIA SHOWN ON THIS SHEET AND MAINTAIN THE ANCHORAGE SYSTEM SHOWN. THE BEARINGS SHALL BE DESIGNED ACCORDING TO AASHTO "STANDARD SPECIFICATIONS FOR HIGHWAY BRIDGES" 2002 EDITION AND ITS LATEST REVISIONS.
- THE BEARING SHAPE FACTOR SHALL BE BETWEEN 5.0 AND 12.0.
- ALL REINFORCEMENT BETWEEN LAYERS OF ELASTOMERIC SHALL BE STEEL GRADE 60. NO FABRIC REINFORCEMENT WILL BE PERMITTED.
- ELASTOMERIC BEARINGS REINFORCED WITH STEEL SHALL HAVE A 1/8" EDGE SEAL OF ELASTOMERIC INTEGRAL WITH THE BEARING OVER ALL PLATES.
- ALL MATERIALS AND FABRICATION SHALL BE PER AASHTO DIVISION II SECTION 18.2 AND AASHTO MATERIAL SPECIFICATION M251.
- DESIGN CRITERIA:
 - A. TEMPERATURE RANGE: 80 F
 - B. 60 DUROMETER ELASTOMERIC
 - C. MAXIMUM BEARING STRESS: 1000 psi
 - D. DESIGN ROTATION: 0.016 rad
 - E. REACTION/BEAM:

	36"	48"
RDL:	28 kips	35 kips
RLL+I:	25 kips	33 kips
- COMPRESSIBLE SEALER. THE FABRICATOR SHALL SUPPLY A SELF ADHESIVE COMPRESSIBLE SEALER BETWEEN THE BOTTOM OF THE UNITS AND THE BRIDGE SEAT. THIS COMPRESSIBLE SEALER SHALL SURROUND THE 2 1/2" DIA SLEEVE IN THE UNIT. THE PURPOSE OF THE SEALER IS TO FACILITATE PLACEMENT OF THE "MORTAR OR JOINT SEALER" AROUND THE ANCHOR BOLTS.

**SUPERSTRUCTURE DETAILS
BRIDGE END & BEARINGS**

PROJECT NAME: CASTLETON	PLOT DATE: 09-FEB-2007
PROJECT NUMBER: RS 0142(10)	DRAWN BY: STR 3
FILE NAME: PW/78f193/sf193sup.dgn	CHECKED BY: C. CARLSON
PROJECT LEADER: R. WHITCOMB	SHEET 43 OF 68
DESIGNED BY: M. HALE	
78f193/str/sf193brg.i	