

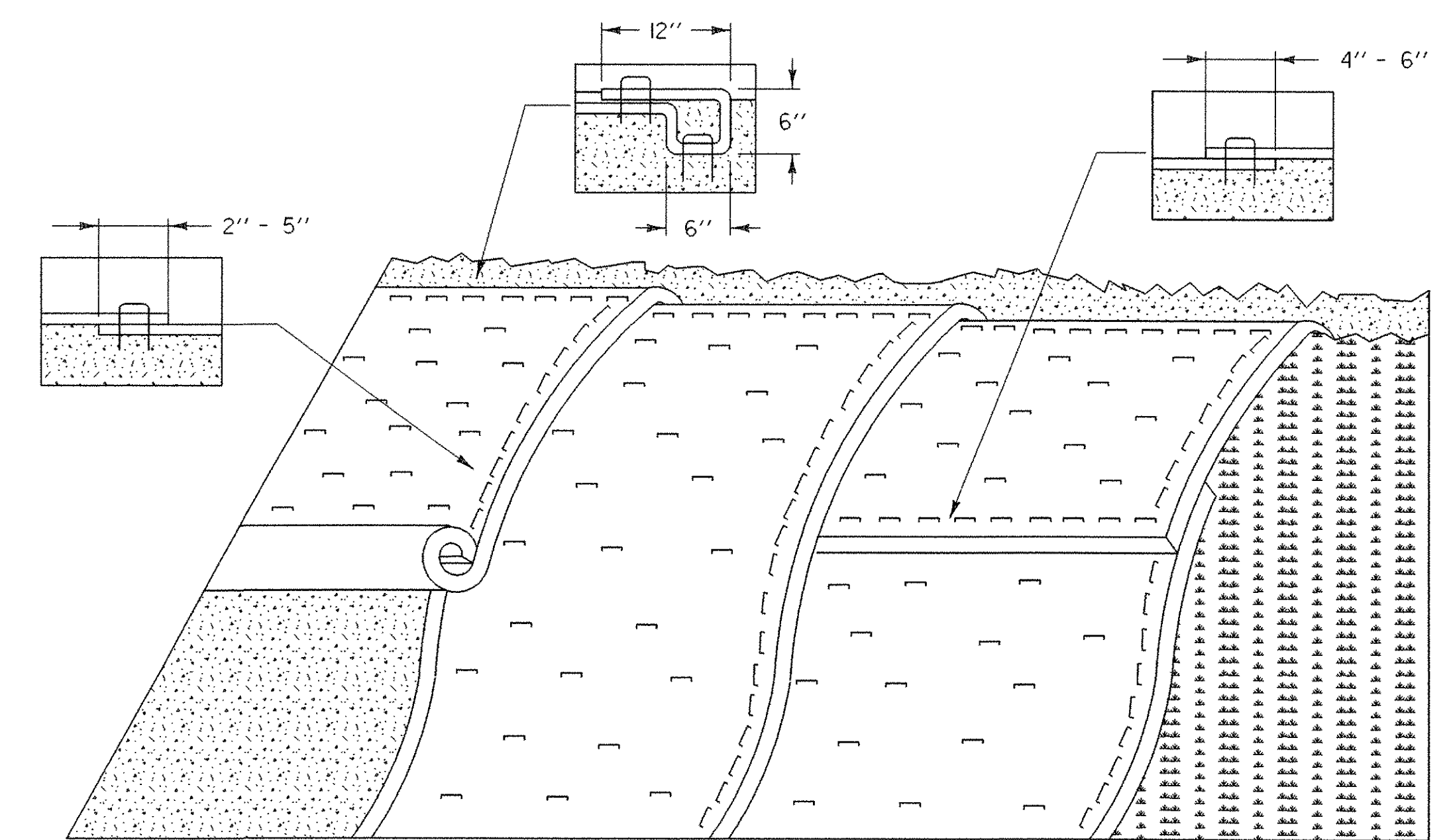
### EROSION MATTING FOR DITCHES

#### APPLICATION NOTES:

- A. THE PURPOSE OF LINING THE DITCH WITH EROSION MATTING IS TO REDUCE EROSION AND AID THE ESTABLISHMENT OF VEGETATION AT LOW VELOCITIES.
- B. TYPE OF EROSION MATTING TO BE USED SHOULD BE BASED ON FACTORS SPECIFIC TO EACH APPLICATION. SEE SPECIFICATIONS AND PRODUCT RECOMMENDATIONS FOR SUITABILITY.

#### GENERAL NOTES:

1. WATER MAY NEED TO BE DIVERTED TO ALLOW PROPER MATTING INSTALLATION.
2. GRADE AND SMOOTH CHANNEL TO PROVIDE GOOD MATTING TO SOIL SURFACE CONTACT.
3. APPLY FERTILIZER, LIME, AND SEED PRIOR TO PLACING MATTING.
4. INSTALL MATTING IN THE CENTER OF THE CHANNEL, IN THE DIRECTION OF THE WATER FLOW.
5. INSTALL MATTING ON THE SIDE SLOPES OF THE CHANNEL, OVERLAPPING THE CENTER MAT.
6. ANCHOR MATTING AS SHOWN, UTILIZING ANCHOR STAPLES. STAPLE PLACEMENT SHALL BE DETERMINED BY THE MANUFACTURER'S INSTALLATION INSTRUCTIONS.
7. EROSION MATTING SHALL BE INSPECTED EVERY SEVEN (7) CALENDAR DAYS AND WITHIN 24 HOURS OF A STORM EVENT GREAT ENOUGH TO CAUSE WATER TO LEAVE THE CONSTRUCTION SITE.
8. EROSION MATTING SHALL BE REPAIRED AND RESTAPLED AS NECESSARY TO ENSURE PROPER FUNCTION.



### EROSION MATTING FOR SLOPES

#### APPLICATION NOTES:

- A. THE PURPOSE OF EROSION MATTING ON SLOPES IS TO REDUCE EROSION AND AID THE ESTABLISHMENT OF VEGETATION.
- B. EROSION CONTROL MATTING SHALL BE USED FOR THE FOLLOWING REASONS:
  - SLOPES > 3H:1V
  - AREAS WHERE SEED AND MULCH WILL NOT STAY IN PLACE ALONE
  - WHERE SEEDING IS OUTSIDE THE GROWING SEASON.

#### GENERAL NOTES:

1. GRADE AND SMOOTH THE SLOPE TO PROVIDE GOOD MATTING TO SOIL SURFACE CONTACT.
2. APPLY FERTILIZER, LIME, AND SEED PRIOR TO PLACING MATTING.
3. ANCHOR MATTING AS SHOWN, UTILIZING ANCHOR STAPLES. STAPLE PLACEMENT SHALL BE DETERMINED BY THE MANUFACTURER'S INSTALLATION INSTRUCTIONS.
4. UNROLL EROSION MATTING VERTICALLY DOWN SLOPE IN THE DIRECTION OF WATER FLOW.
5. OVERLAP UPPER MATTING OVER LOWER MATTING AS SHOWN.
6. OVERLAP ADJACENT MATTING AS SHOWN.
7. CUT EXCESS MATTING AT END OF SLOPE AND ANCHOR THE END.
8. EROSION MATTING SHALL BE INSPECTED EVERY SEVEN (7) CALENDAR DAYS AND WITHIN 24 HOURS OF A STORM EVENT GREAT ENOUGH TO CAUSE WATER TO LEAVE THE CONSTRUCTION SITE.
9. EROSION MATTING SHALL BE REPAIRED AND RESTAPLED AS NECESSARY TO ENSURE PROPER FUNCTION.

## EROSION PREVENTION & SEDIMENT CONTROL DETAILS EROSION MATTING FOR DITCHES & SLOPES

### EROSION DETAILS 4

PROJECT NAME: CASTLETON	PLOT DATE: 09-FEB-2007
PROJECT NUMBER: RS 0142(10)	DRAWN BY: W. LAMMER
FILE NAME: /78f193/str/sf193ero.dgn	CHECKED BY: T. LACKEY
PROJECT LEADER: R. WHITCOMB	SHEET 31 OF 68
DESIGNED BY: W. LAMMER	
sf193e08.i	