

BRIDGE RAILING, GALVANIZED NETC 2 RAIL
 ML 400+87 TO 401+63 LT
 ML 400+76 TO 401+52 RT

GUARDRAIL APPROACH SECTIONS, GALVANIZED NETC 2 RAIL
 ML 400+62 TO 400+87 LT
 ML 401+63 TO 401+88 LT
 ML 400+51 TO 400+76 RT
 ML 401+52 TO 401+73 RT

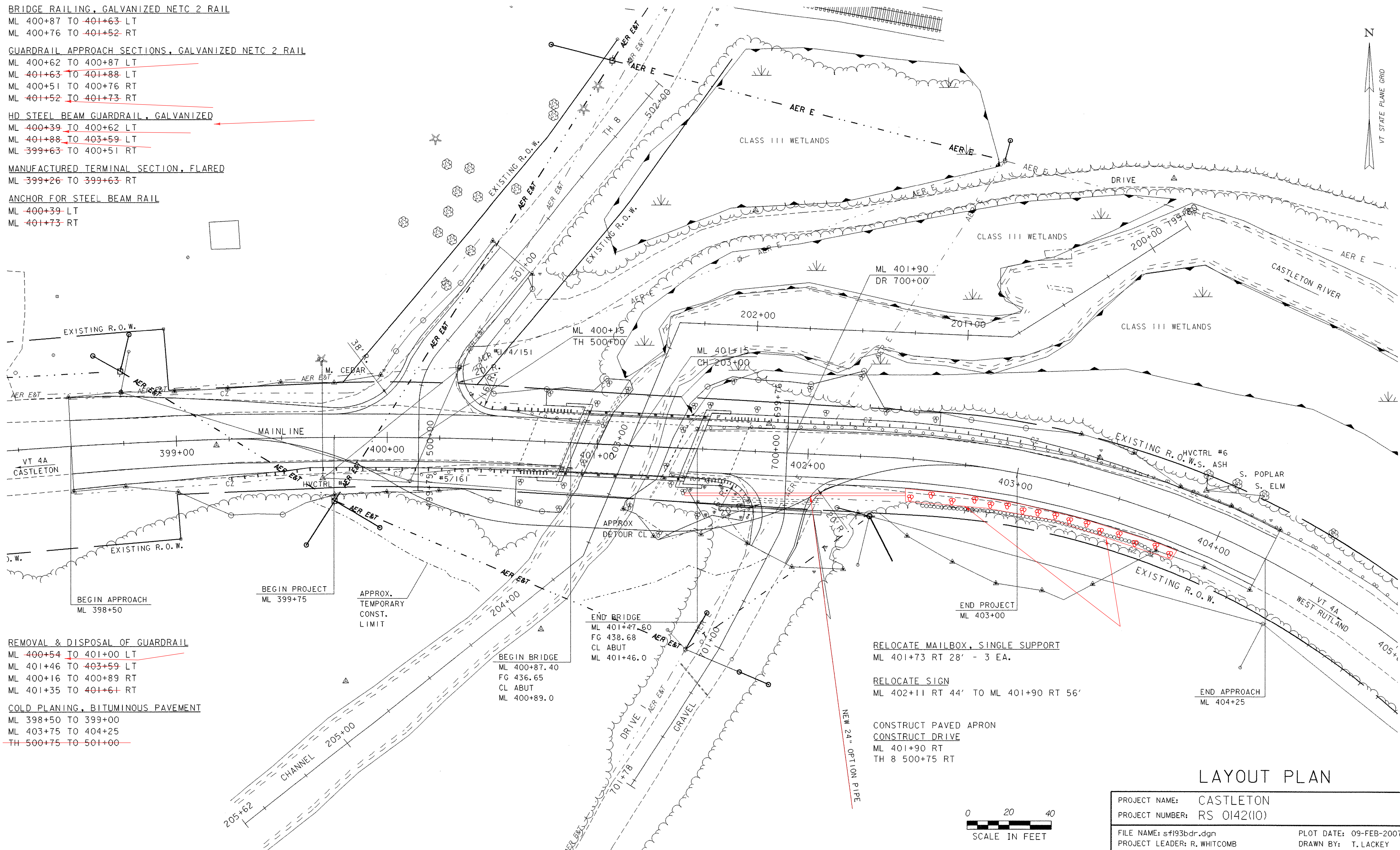
HD STEEL BEAM GUARDRAIL, GALVANIZED
 ML 400+39 TO 400+62 LT
 ML 401+88 TO 403+59 LT
 ML 399+63 TO 400+51 RT

MANUFACTURED TERMINAL SECTION, FLARED
 ML 399+26 TO 399+63 RT

ANCHOR FOR STEEL BEAM RAIL
 ML 400+39 LT
 ML 401+73 RT

REMOVAL & DISPOSAL OF GUARDRAIL
 ML 400+54 TO 401+00 LT
 ML 401+46 TO 403+59 LT
 ML 400+16 TO 400+89 RT
 ML 401+35 TO 401+61 RT

COLD PLANING, BITUMINOUS PAVEMENT
 ML 398+50 TO 399+00
 ML 403+75 TO 404+25
 TH 500+75 TO 501+00



END BRIDGE
 ML 401+47.60
 FG 438.68
 CL ABUT
 ML 401+46.0

BEGIN BRIDGE
 ML 400+87.40
 FG 436.65
 CL ABUT
 ML 400+89.0

RELOCATE MAILBOX, SINGLE SUPPORT
 ML 401+73 RT 28' - 3 EA.

RELOCATE SIGN
 ML 402+11 RT 44' TO ML 401+90 RT 56'

CONSTRUCT PAVED APRON
 CONSTRUCT DRIVE
 ML 401+90 RT
 TH 8 500+75 RT

END APPROACH
 ML 404+25

LAYOUT PLAN

| | |
|-----------------------------|------------------------|
| PROJECT NAME: CASTLETON | PLOT DATE: 09-FEB-2007 |
| PROJECT NUMBER: RS 0142(10) | DRAWN BY: T. LACKEY |
| FILE NAME: sf193bdr.dgn | CHECKED BY: C. CARLSON |
| PROJECT LEADER: R. WHITCOMB | SHEET 16 OF 68 |
| DESIGNED BY: T. LACKEY | |
| 78f193/structures/sf193p11 | |