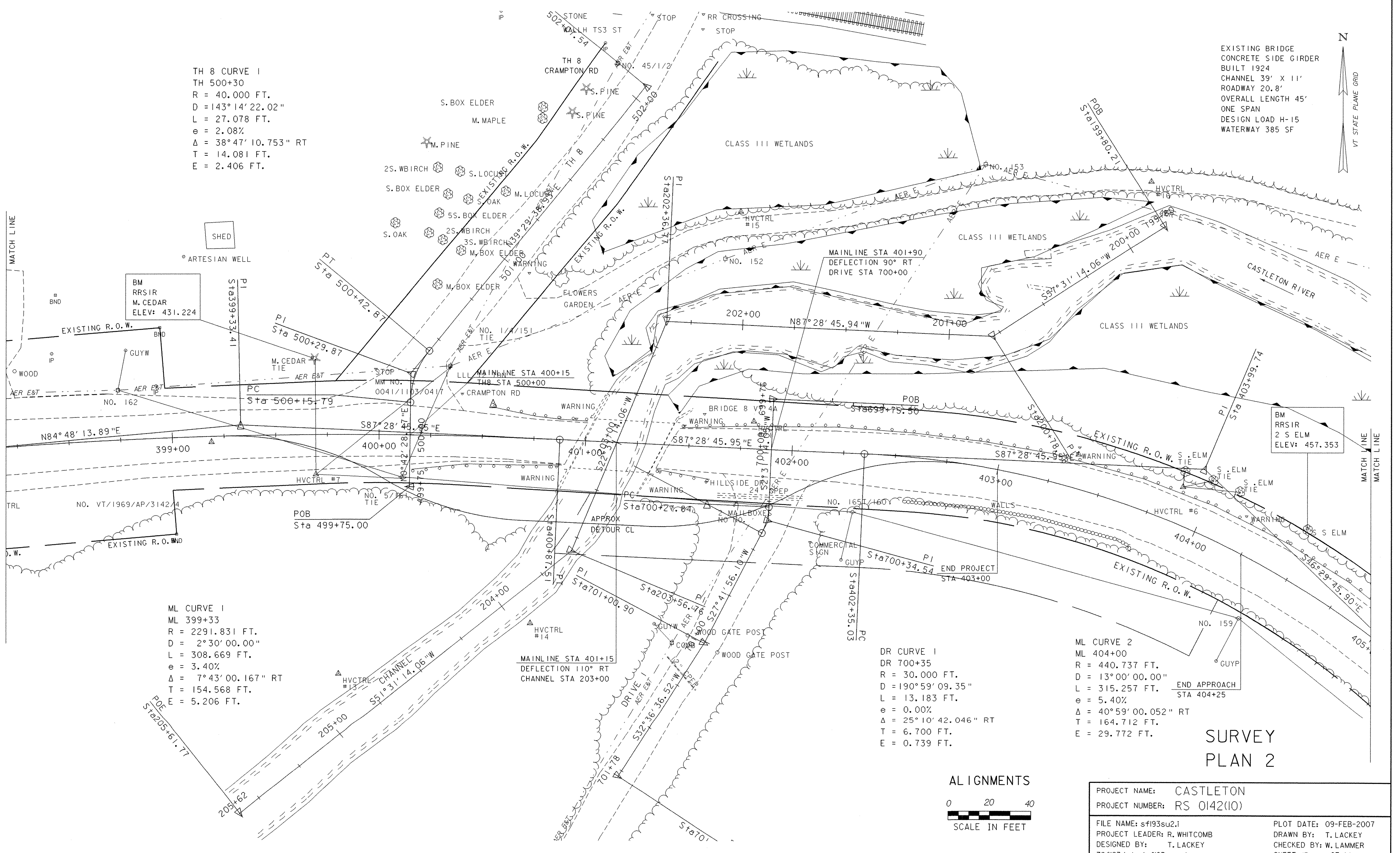


TH 8 CURVE 1
 TH 500+30
 R = 40.000 FT.
 D = 143° 14' 22.02"
 L = 27.078 FT.
 e = 2.08%
 Δ = 38° 47' 10.753" RT
 T = 14.081 FT.
 E = 2.406 FT.

EXISTING BRIDGE
 CONCRETE SIDE GIRDER
 BUILT 1924
 CHANNEL 39' X 11'
 ROADWAY 20.8'
 OVERALL LENGTH 45'
 ONE SPAN
 DESIGN LOAD H-15
 WATERWAY 385 SF

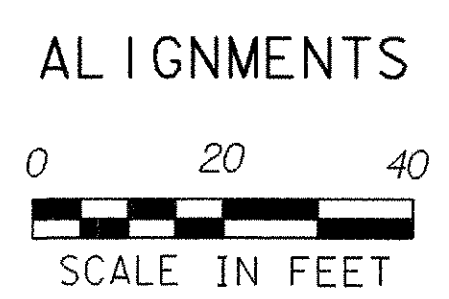


ML CURVE 1
 ML 399+33
 R = 2291.831 FT.
 D = 2° 30' 00.00"
 L = 308.669 FT.
 e = 3.40%
 Δ = 7° 43' 00.167" RT
 T = 154.568 FT.
 E = 5.206 FT.

DR CURVE 1
 DR 700+35
 R = 30.000 FT.
 D = 190° 59' 09.35"
 L = 13.183 FT.
 e = 0.00%
 Δ = 25° 10' 42.046" RT
 T = 6.700 FT.
 E = 0.739 FT.

ML CURVE 2
 ML 404+00
 R = 440.737 FT.
 D = 13° 00' 00.00"
 L = 315.257 FT.
 e = 5.40%
 Δ = 40° 59' 00.052" RT
 T = 164.712 FT.
 E = 29.772 FT.

**SURVEY
 PLAN 2**



PROJECT NAME:	CASTLETON	PLOT DATE:	09-FEB-2007
PROJECT NUMBER:	RS 0142(10)	DRAWN BY:	T. LACKEY
FILE NAME:	sf193su2.i	CHECKED BY:	W. LAMMER
PROJECT LEADER:	R. WHITCOMB	SHEET	13 OF 68
DESIGNED BY:	T. LACKEY		
78f193/str/sf193sur.dgn			