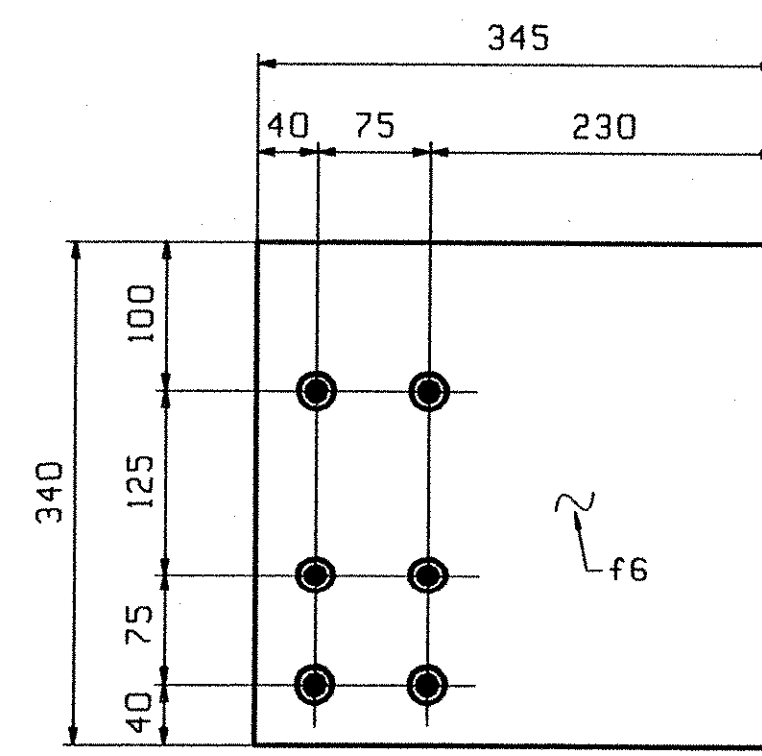


END CROSSFRAMES
(@ ABUTMENTS LOOKING AWAY FROM BACKWALL)

	MARK	REQ'D	DROP	(A)	(B)	(C)	(D)	(E)	(F)	(G)	(H)	(K)	(L)	(R)	[1]	[2]	[3]
G1-G2 (ABUT1)	6CF1	1	63	2081	1036	1239	1194	10	8	9	1160	1120	233	250	a6	c6	d6
G3-G2 (ABUT1)	6CF2	1	43	2080	1037	1232	1201	7	5	6	1155	1130	236	248	g6	h6	k6
G5-G4 (ABUT2)	6CF3	1	63	2081	1036	1239	1194	10	8	9	1160	1120	233	250	a6	c6	d6
G4-G3 (ABUT2)	6CF4	1	43	2080	1037	1232	1201	7	5	6	1155	1130	236	248	g6	h6	k6

-PAINTED



DETAIL OF f6

RECEIVED
OCT 20 2004
DATE 11-01-04

Furnish as Connected
 Revise and Resubmit
 Submit Spliced Item
 Reviewed
 Rejected

This review is only for general conformance with the design concept and to inform the fabricator of any errors or omissions. It does not constitute an approval of the design or the materials. The contractor is responsible for the design and the materials. The contractor is responsible for the construction and the quality of the work. The contractor is responsible for the safety of the work. The contractor is responsible for the performance of the work.

McFadden-Johnson, Inc.
Date: 11/01/04
By: Steven A. Della

BILL OF MATERIAL						JOB NO.	DRAWING NO.	REV.	
PAGE	LINE	MARK	QTY	MARK	MATERIAL	LENGTH	REMARKS	WT	PROCUREMENT NOTES
						m			
		6CF1	1		END CROSSFRAME			145 kg	
2	G	1	a6	C 310x37	2	091	(M270M-345H)		
2	H	1	b6	WT 100x11	1	690	(M270M-345H)		
2	J	1	c6	WT 100x11	1	160	(M270M-345H)		
2	J	1	d6	WT 100x11	1	120	(M270M-345H)		
2	K	2	f6	PL 13x340	0	345	(M270M-345H)		
		6CF2	1		END CROSSFRAME			145 kg	
2	G	1	g6	C 310x37	2	087	(M270M-345H)		
2	H	1	b6	WT 100x11	1	690	(M270M-345H)		
2	J	1	h6	WT 100x11	1	155	(M270M-345H)		
2	J	1	k6	WT 100x11	1	130	(M270M-345H)		
2	K	2	f6	PL 13x340	0	345	(M270M-345H)		
		6CF3	1		END CROSSFRAME			145 kg	
2	G	1	a6	C 310x37	2	091	(M270M-345H)		
2	H	1	b6	WT 100x11	1	690	(M270M-345H)		
2	J	1	h6	WT 100x11	1	155	(M270M-345H)		
2	J	1	k6	WT 100x11	1	130	(M270M-345H)		
2	K	2	f6	PL 13x340	0	345	(M270M-345H)		
		6CF4	1		END CROSSFRAME			145 kg	
2	G	1	g6	C 310x37	2	087	(M270M-345H)		
2	H	1	b6	WT 100x11	1	690	(M270M-345H)		
2	J	1	h6	WT 100x11	1	155	(M270M-345H)		
2	J	1	k6	WT 100x11	1	130	(M270M-345H)		
2	K	2	f6	PL 13x340	0	345	(M270M-345H)		

NOTES:
FOR GENERAL NOTES & WELD PROCEDURES SEE DRAWING GNI.

OUT FOR APPROVAL	7/20/04																		
OUT FOR APPROVAL																			
ISSUED TO SHOP																			
FIELD & OFFICE																			

REV.	REMARKS	DATE	DWN	CHK	APP	Q.A.	NO.	DIA.	LGT	TYPE	WASHER
	MATERIAL: M270M-345W										
	ELECTRODES:										
	HOLES:										
	15/16" U.N.										
	SHOP BOLTS:										
	NONE										
SURFACE PREP. & PAINT: STEEL WITHIN 2450 OF ABUTMENT 2 SHALL BE PAINTED PER NOTES ON GNI. ALL OTHER STEEL SHALL BE UNPAINTED.											
DESCRIPTION: END CROSSFRAMES										DRAWN BY	DATE
JOB: VT. ROUTE 118 OVER TROUT RIVER										AB	07/27/04
TOWN OF BERKSHIRE, VT										CHKD BY	
FRANKLIN COUNTY										PCP	08/02/04
PROJ NO. BRF-RS D283(?)										APPROV BY	
CUSTOMER: A.L. ST. ONGE										SUPERVISOR	H. J. GATTI
CASCO BAY STEEL STRUCTURES, INC.										JOB NO.	DRG. NO.
75 SPRING HILL ROAD										222	6
PHONE (207) 282-7360										160 55	REV. ▲
SACO, MAINE 04072											
FAX. (207) 282-1179											