

GENERAL NOTES

CONSTRUCTION SPECIFICATIONS

- 1). ALL MATERIAL AND WORKMANSHIP TO BE IN ACCORDANCE WITH THE STATE OF VERMONT AGENCY OF TRANSPORTATION STANDARD SPECIFICATIONS FOR CONSTRUCTION DATED 2001 WITH LATEST REVISIONS.

DESIGN SPECIFICATIONS

- 1). AMERICAN ASSOCIATION OF STATE HIGHWAY AND TRANSPORTATION OFFICIALS (A.A.S.H.T.O) STANDARD SPECIFICATIONS FOR HIGHWAY BRIDGES, 1996 EDITION WITH LATEST REVISIONS.

MATERIAL SPECIFICATIONS

- 1). UNLESS NOTED, ALL STEEL TO BE AASHTO M270M GRADE 345W (ASTM A709-345W).
- 2). HIGH STRENGTH BOLTS: AASHTO M164 (ASTM A325) 22mm (7/8") DIA. TYPE 1 (GALV.) BOLTS SHALL BE USED FOR PAINTED CONNECTIONS AND TYPE 3 BOLTS SHALL BE USED FOR UNPAINTED CONNECTIONS.
- 3). MATERIAL NOTED "H2-3" OR "CVN" SHALL BE CHARPY V-NOTCH TESTED IN ACCORDANCE WITH THE REQUIREMENTS OF AASHTO M270M, SUPPLEMENT S83 FOR TEMPERATURE ZONE 2. (20J @ 4°C - "H" FREQUENCY)

FABRICATION

- 1). ALL HOLES SHALL BE PUNCHED OR DRILLED FULL SIZE (UN).
- 2). STUDS ARE FURNISHED AND FIELD APPLIED BY OTHERS.

FIELD CONNECTIONS

- 1). ALL FIELD CONNECTIONS SHALL BE MADE WITH 22mm (7/8") DIAMETER HIGH STRENGTH A-325 BOLTS, INSTALLED PER SECTION 506.19(c).
- 2). BOLTS SHALL HAVE HEAVY HEX NUT, HEX HEAD, & ONE FLAT WASHER EACH (WASHER TO BE PLACED UNDER TURNED ELEMENT).
- 3). PIECE MARKS WILL BE LOCATED AS SHOWN ON ERECTION DRAWINGS.
- 4). AT OVERSIZED HOLE LOCATIONS A HARDENED WASHER SHALL BE PLACED UNDER BOTH THE HEAD AND THE NUT.

WELDING

- 1). THE CONFIGURATION OF THE WELD JOINTS AND ALL WELDING PROCEDURES SHALL BE IN ACCORDANCE WITH AASHTO/AWS D1.5-02 BRIDGE WELDING CODE AND IN ADDITION TO SPECIFICATIONS SHOWN ABOVE. ALL WELDING WILL BE DETAILED TO PRE-QUALIFIED JOINTS, UNLESS PROHIBITED BY THE DESIGNER.
- 2). WELDING OF MAIN LOAD CARRYING MEMBERS AND ATTACHMENTS SHALL BE PERFORMED USING THE AUTOMATIC SUBMERGED ARC & SHIELDED METAL ARC PROCESSES. ALL WELDS ARE CONTINUOUS U.N.
- 3). NON DESTRUCTIVE TESTING OF WELDS SHALL BE IN ACCORDANCE WITH THE REFERENCED SPECIFICATION.

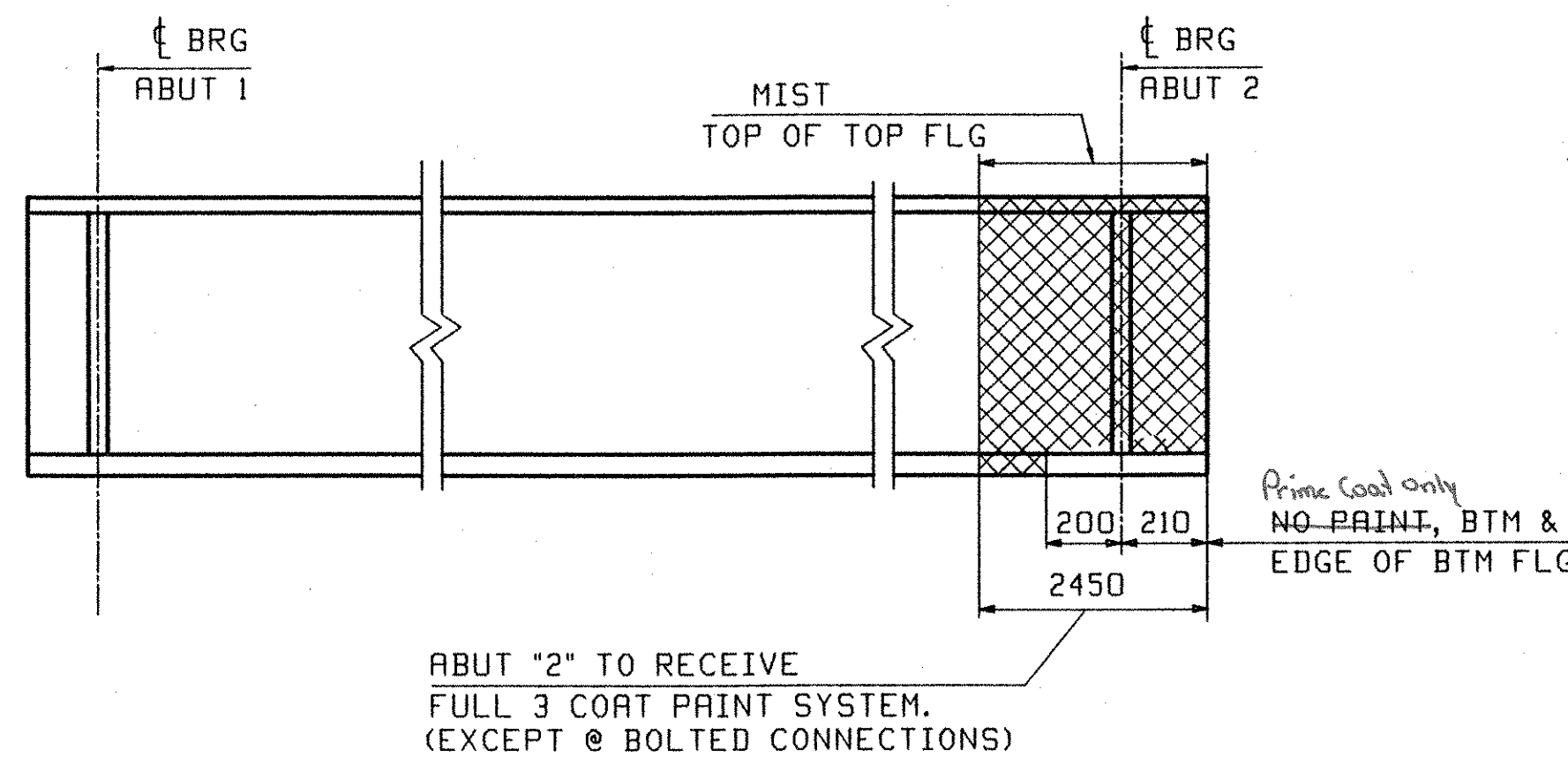
CLEANING:

- 1). ALL STEEL SHALL BE BLAST CLEANED AS PER SSPC SP-10 PER SPEC. 506.14(a)
- 2). STEEL THAT SHALL BE PAINTED SHALL BE CLEANED IN ACCORDANCE WITH SECTION 513.04(A) OF THE SUPPLEMENTAL SPECIFICATIONS.

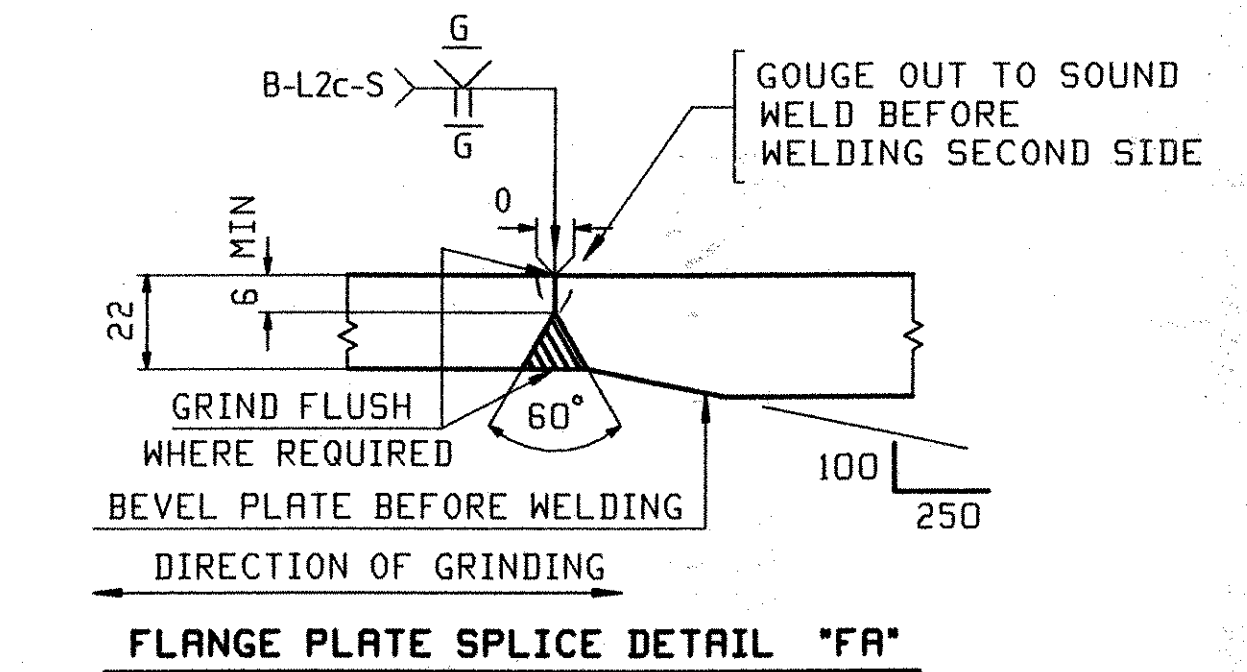
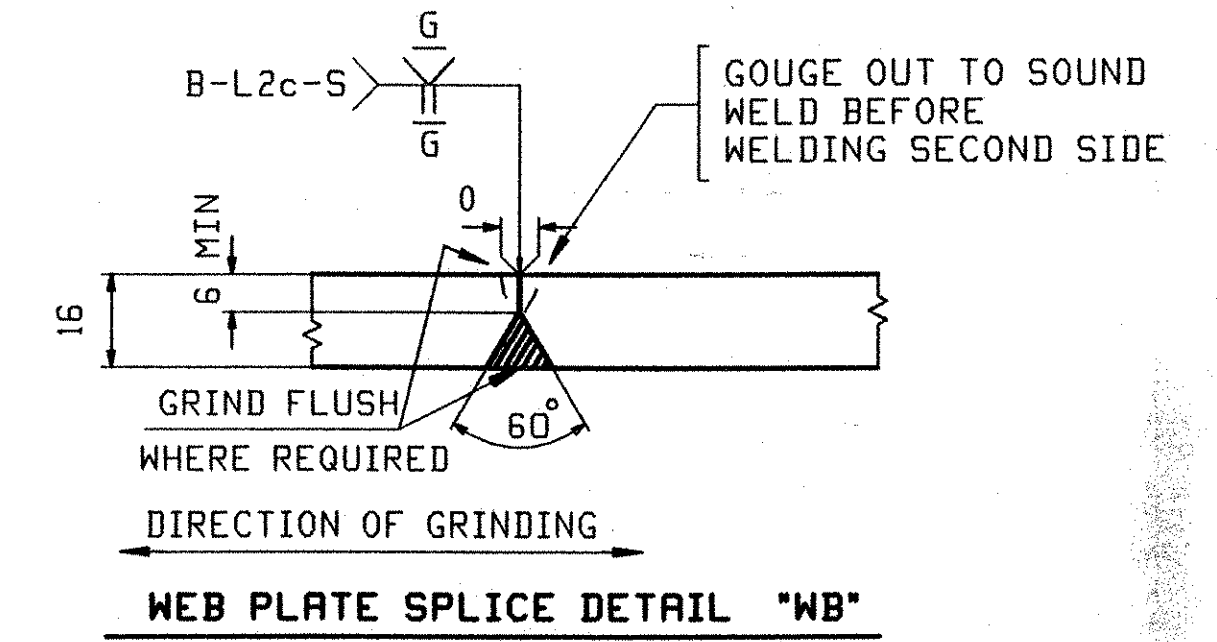
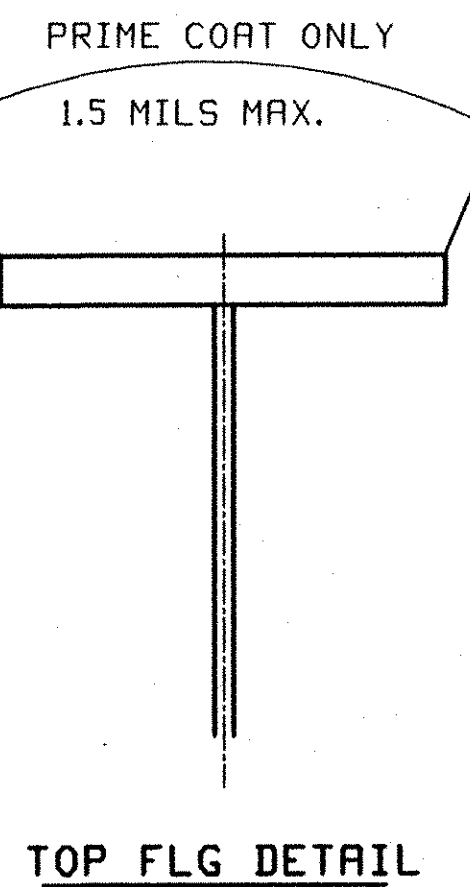
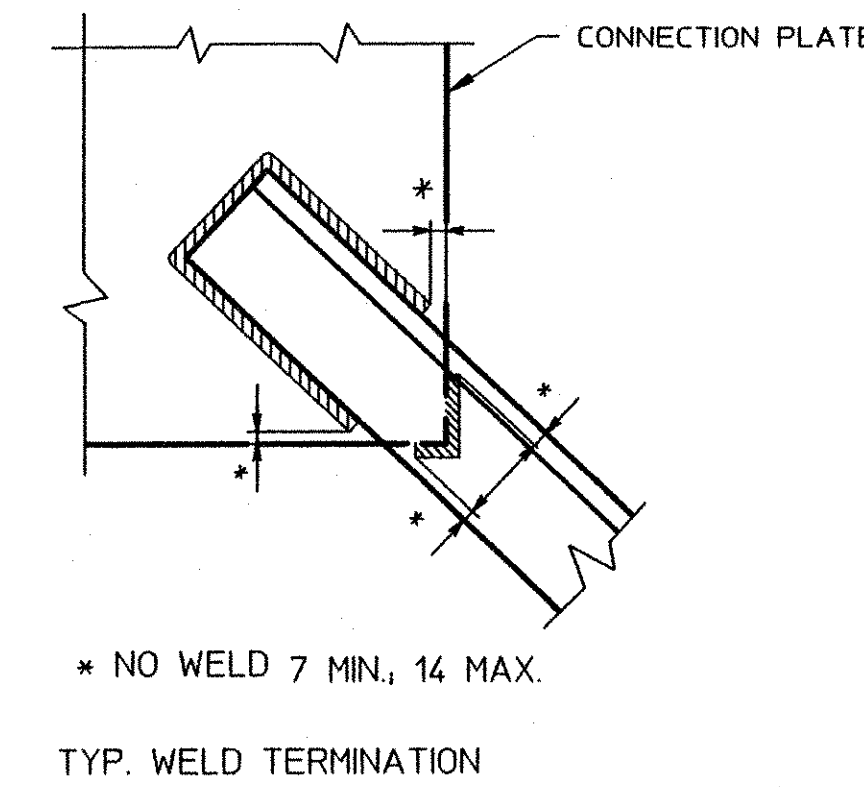
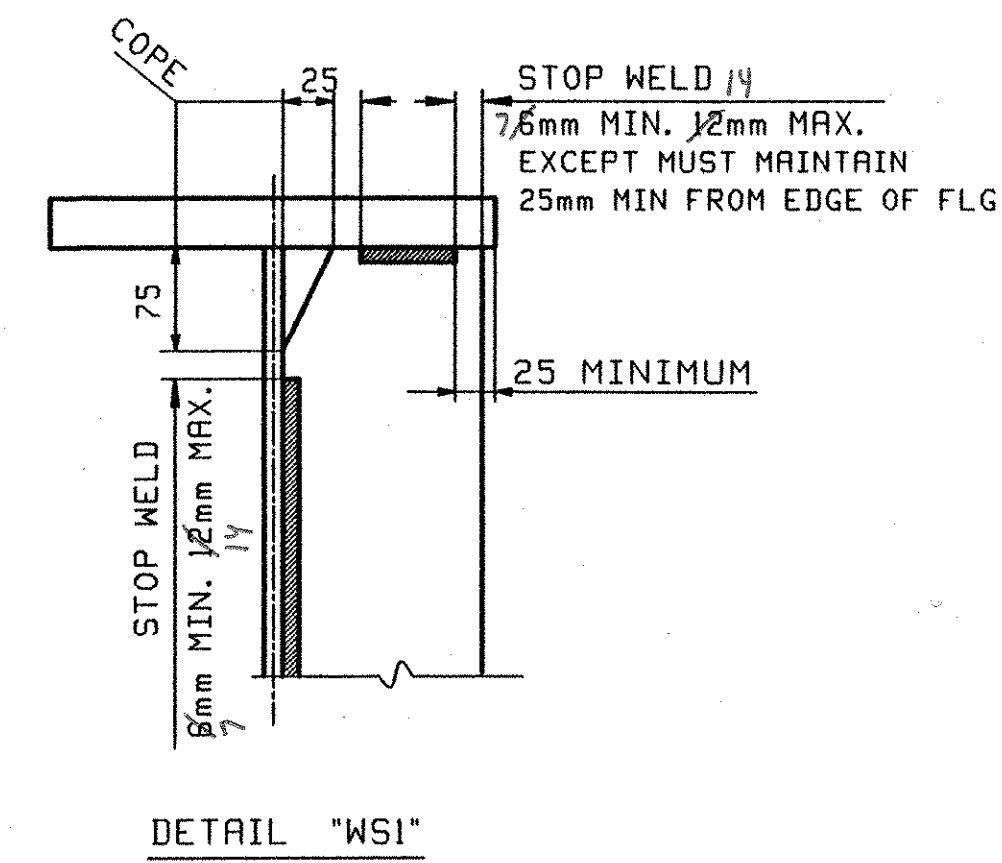
PAINTING

- 1). STEEL TO BE PAINTED, AS SHOWN BELOW, SHALL BE SHOP APPLIED AS NOTED IN SPECIAL PROVISION SECTION 513.02 (a) & (b) THE COLOR OF THE FINAL COAT OF PAINT SHALL BE BROWN AND SHALL CONFORM WITH FEDERAL STANDARD #595, COLOR CHIP NUMBER 20059 (BROWN).
- 2). PROTECTIVE GREASE SHALL BE APPLIED IN THE FIELD BY OTHERS.

| WASSER | (MOISTURE CURE SYSTEM) | DFT IN MILS | |
|-----------|--|-------------|------|
| | | MIN. | MAX |
| HIGH TECH | P MC-ZINC-ZINC RICH URETHANE (ORGANIC) | 3.0 | 6.0 |
| COATINGS | I MC-FERROX B-URETHANE | 3.0 | 6.0 |
| | T MC-FERROX A-ALIPHATIC URETHANE | 3.0 | 10.0 |



TYPICAL PAINT SKETCH



NOTE TO ENGINEER:
THESE NOTES ARE NOT INTENDED TO BE ALL INCLUSIVE AND COMPLIANCE WITH RELEVANT SPECIFICATIONS REMAIN UNCHANGED.

| | | | | | | | | | | | |
|------------------|------------|-------------|-----|--------|----------|-------------|----------|------|-----|------|--------|
| OUT FOR APPROVAL | 7/2/04 | | | | | | | | | | |
| OUT FOR APPROVAL | | | | | | | | | | | |
| ISSUED TO SHOP | | | | | | | | | | | |
| FIELD & OFFICE | | | | | | | | | | | |
| REV. | REMARKS | DATE | DWN | CHK | APP | Q.A. | NO. | DIA. | LGT | TYPE | WASHER |
| MATERIAL: | M270M-345W | ELECTRODES: | | HOLES: | AS NOTED | SHOP BOLTS: | AS NOTED | | | | |

| | | | |
|--|--------------------------------|------------|-------------|
| SURFACE PREP. & PAINT: | | | |
| DESCRIPTION: | GENERAL NOTES | DRAWN BY | DATE |
| JOB: | VT. ROUTE 118 OVER TROUT RIVER | WL | 07/09 |
| | TOWN OF BERKSHIRE, VT | CHKD BY | |
| | FRANKLIN COUNTY | PCP | 07/22 |
| | | APPROV BY | |
| | | SUPERVISOR | H. J. GATTI |
| PROJ NO. | BRF-RS 0283(7) | Q.A. | |
| CUSTOMER: | A.L. ST. ONGE | | |
| CASCO BAY STEEL STRUCTURES, INC. | | JOB NO. | DRG. NO. |
| 75 SPRING HILL ROAD SACO, MAINE 04072 | | 222 | GNI |
| PHONE (207) 282-7360 FAX. (207) 282-1179 | | 149 SS | REV. I |

Reviewed
 Rejected
 Furnish as Corrected
 Revise and Resubmit
 Submit Specified Item

This review is only for general conformance with the design concept and the information given in the Construction Documents. Corrections or comments made on the shop drawings during this review do not relieve the contractor from compliance with the requirements of the plans and specifications. Review of a specific item shall not include review of an assembly of which the item is a component. The Contractor is responsible for dimensions to be confirmed and corrected at the job site. Information that pertains solely to the fabrication process or to the means, methods, techniques, sequences and procedures of construction, coordination of the Work with that of all other trades and performing all work in a safe and satisfactory manner.

McFarland-Johnson, Inc.
 Date: 10/12/04
 By: Steven F. Della

RECEIVED
 OK'D BY: JWC OK'D BY:
 OCT 20 2004
 RESUBMIT: APPROVED: [Signature]
 BY: DATE 11-01-04