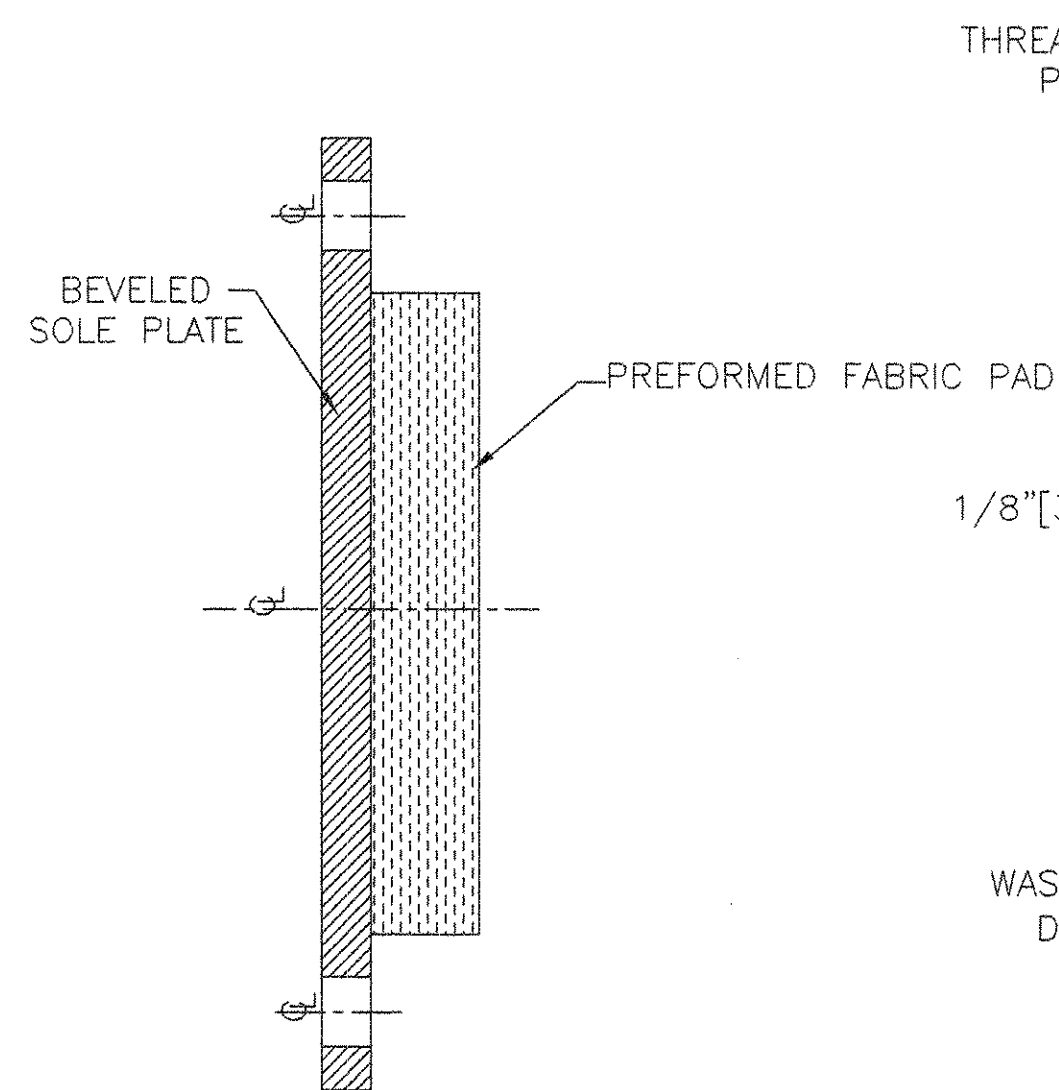
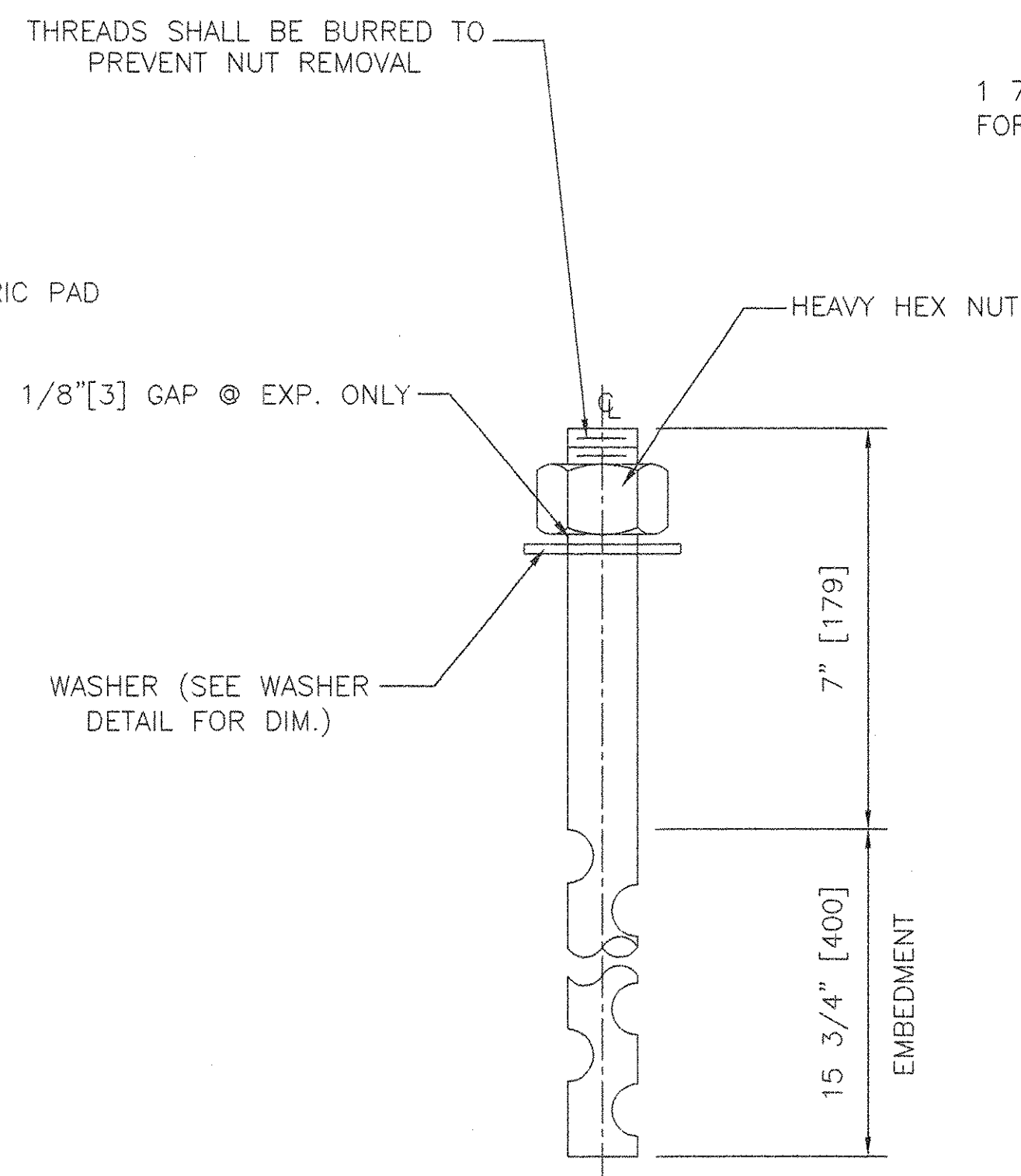


PLAN VIEW
LOCATION: ABUTMENT 1
QUANTITY: 5

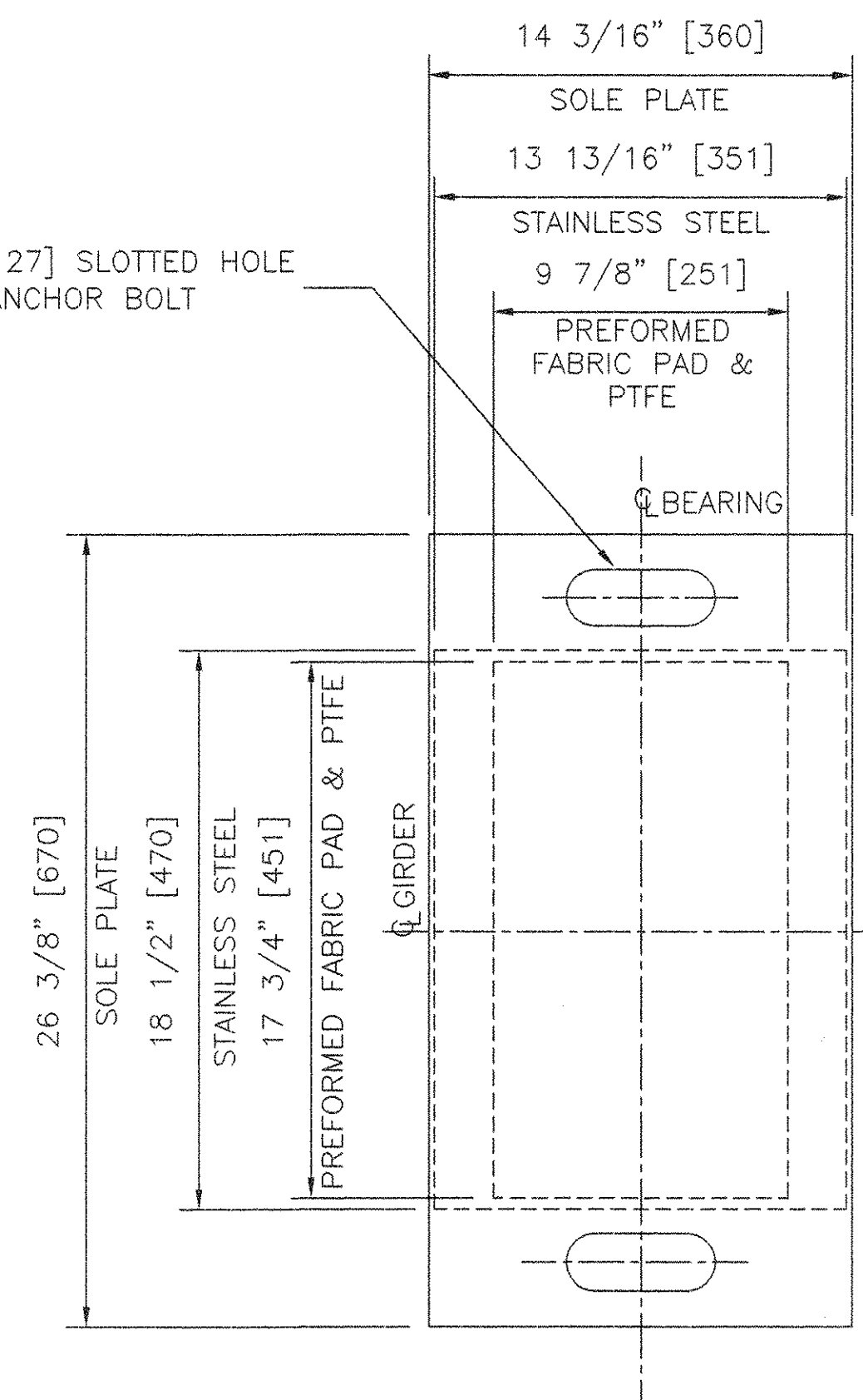


SECTION A-A
LOCATION: ABUTMENT 1



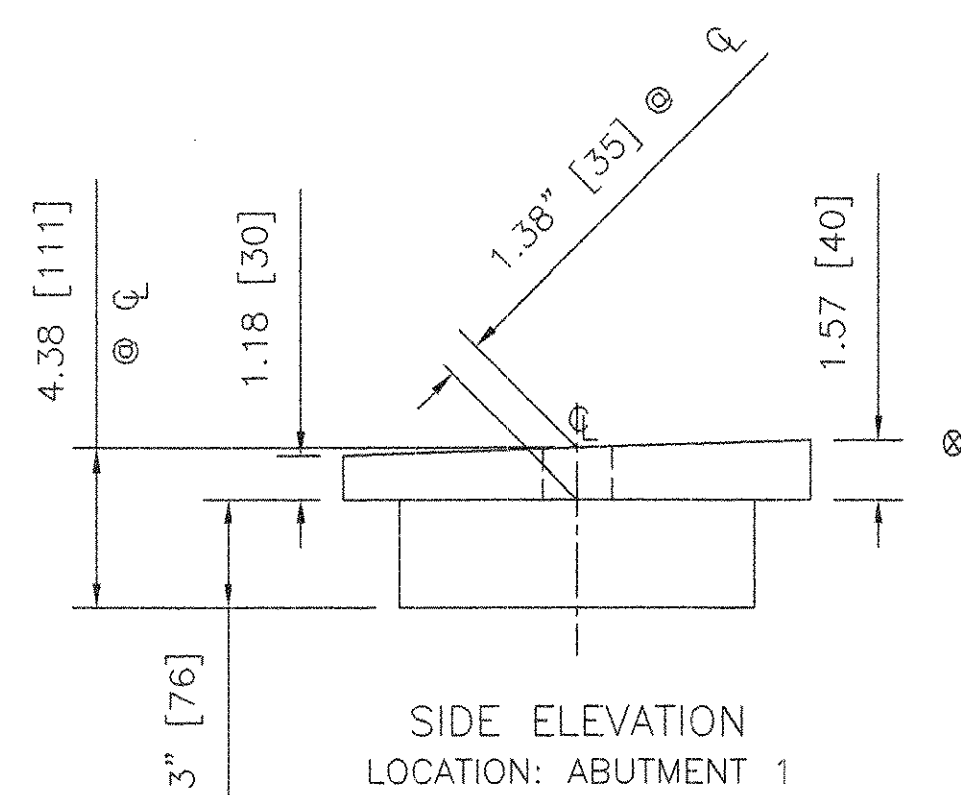
ANCHOR BOLT DETAIL

N.T.S.
QUANTITY: 20
1 1/2"[38]Ø x 22 3/4"[578] LONG ASTM F1554 GR 55 SWEDGED ONE END ANCHOR BOLT WITH 4"[102] THREAD WITH ONE A36 PLATE WASHER AND ONE ASTM A563 HEAVY HEX NUT. ALL GALV.

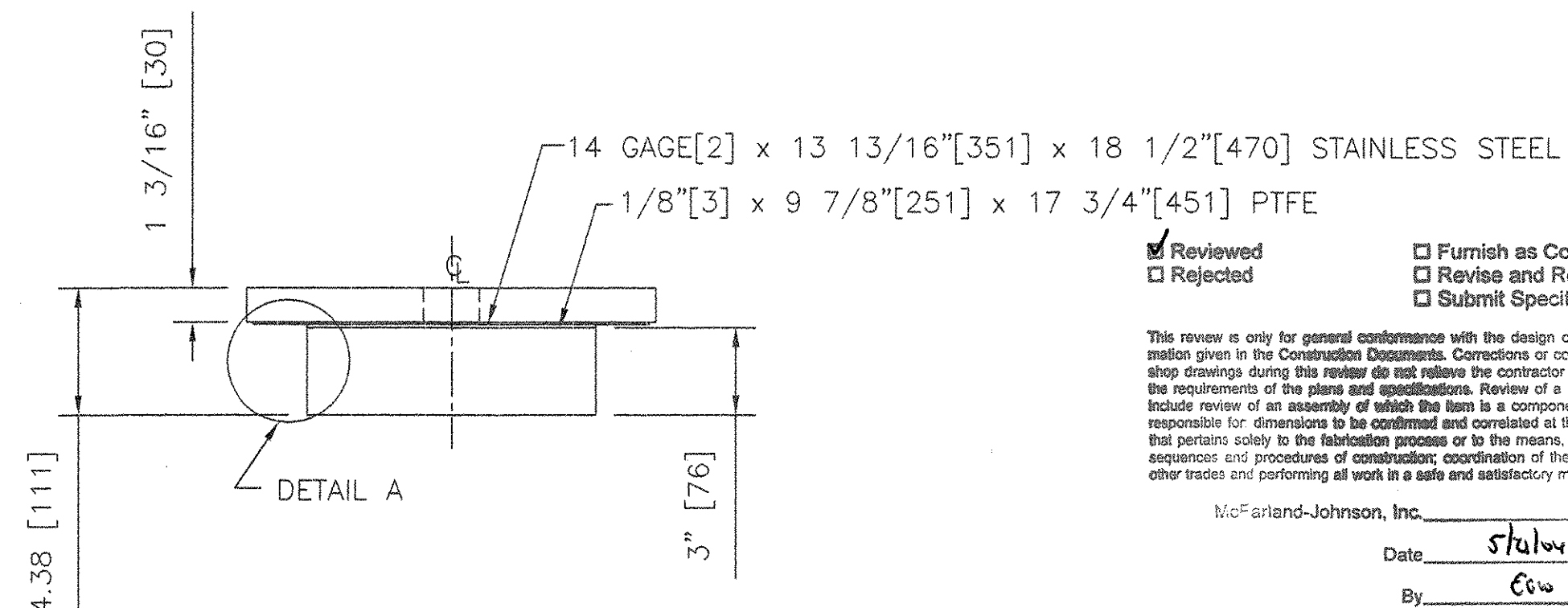


PLAN VIEW
LOCATION: ABUTMENT 2
QUANTITY: 5

RECEIVED
OK'D BY: _____
MAY 24 2004
RESUBMIT APPROVED: [Signature]
BY: _____ DATE: 5/24/04



SIDE ELEVATION
LOCATION: ABUTMENT 1



FRONT ELEVATION
LOCATION: ABUTMENT 2

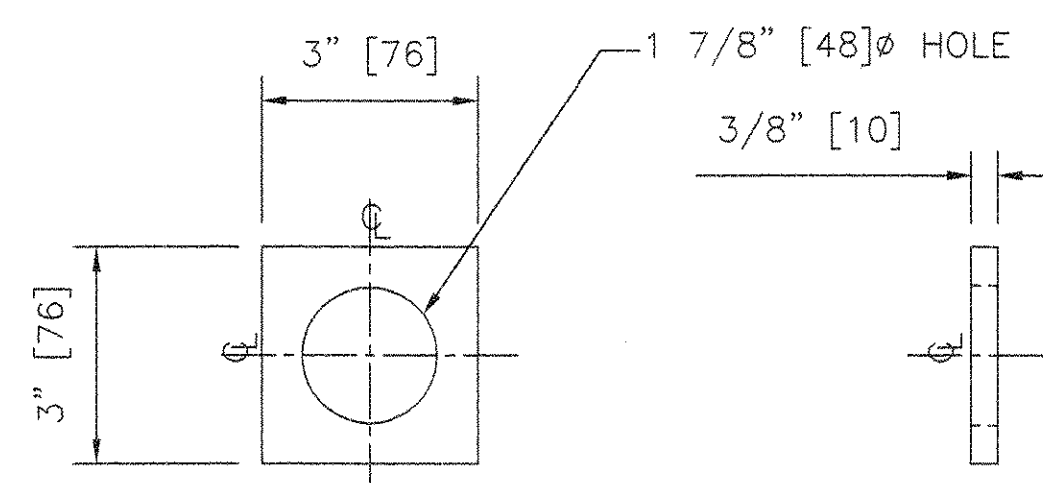
Reviewed
 Rejected
 Furnish as Corrected
 Revise and Resubmit
 Submit Specified Item

This review is only for general conformance with the design concept and the information given in the Construction Documents. Corrections or comments made on the shop drawings during this review do not relieve the contractor from compliance with the requirements of the plans and specifications. Review of a specific item shall not include review of an assembly of which the item is a component. The Contractor is responsible for dimensions to be confirmed and correlated at the jobsite. Information that pertains solely to the fabrication process or to the means, methods, techniques, sequences and procedures of construction; coordination of the Work with that of all other trades and performing all work in a safe and satisfactory manner.

McFarland-Johnson, Inc.
Date: 5/24/04
By: [Signature]

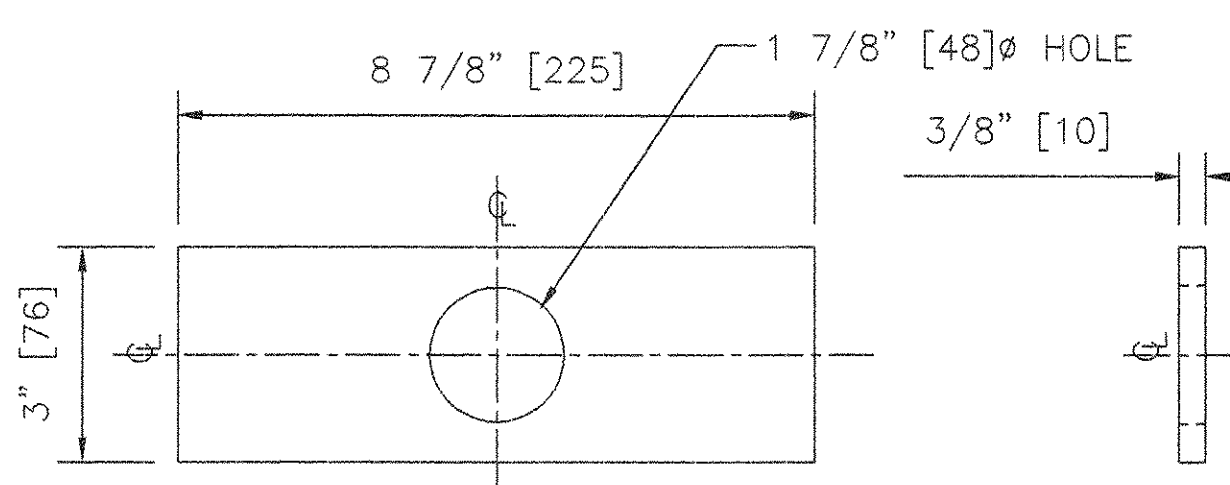
MATERIAL:
STEEL- ASTM A709 GRADE 50 ZINC METALLIZED
STAINLESS STEEL- ASTM A240 TYPE 304, 10 RMS FINISH OR LESS
PTFE- ASTM D4894 VIRGIN UNFILLED
PREFORMED FABRIC PAD- AASHTO 18.4.9.1 DIV. II
ANCHOR BOLTS- F1554 GRADE 55 GALVANIZED

- NOTES:**
- DESIGN CRITERIA:
 - BASE PLATE TO CONCRETE DESIGN PRESSURE = 1,000 PSI(6.895MPa)
 - MINIMUM ALLOWABLE DESIGN ROTATION = 0.015 RADIAN
 - HORIZONTAL DESIGN CAPACITY SHALL BE A MINIMUM 10% OF VERTICAL LOAD
 - DESIGN LOAD PER BEARING = 174.5 KIPS[776KN]
 - ALL BEARING DEVICES SHALL BE METALIZED AS PER SUBSECTION 531.04 (B) AND 506.15(b) OF THE GENERAL SPECIAL PROVISIONS. AREAS OF METALIZING DAMAGED BY FIELD WELDING OR HANDLING SHALL BE REPAIRED IN ACCORDANCE WITH SUPPLEMENTAL SPECIFICATIONS 513 WHICH REFERENCES ASTM A760
 - ALL EDGED CORNERS SHALL BE ROUNDED TO 1/16"[1.6] RADIUS
 - Ø MARKS THE THICK END OF BEVEL
 - UNITS THAT ARE IN [] ARE IN mm
 - COSMEC REPRESENTATIVE: MR. MATT McANDREWS (508)668-6600
 - LOCATION OF FABRICATION: 70 SOUTH STREET WALPOLE MA, 02081

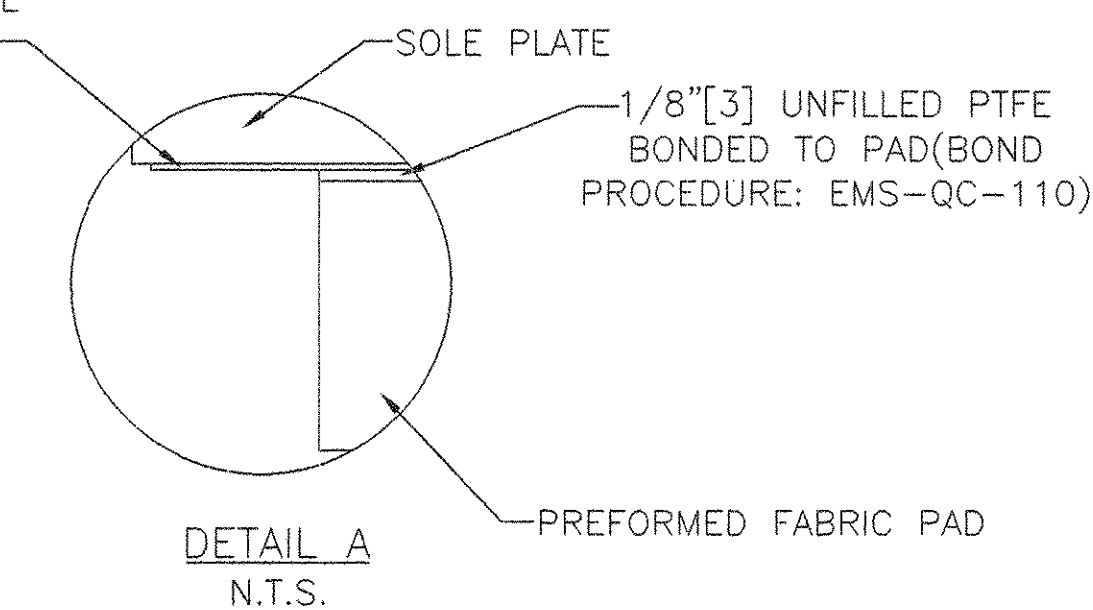


WASHER DETAIL FOR FIXED BEARING ONLY
N.T.S.
QUANTITY: 10

14 GAGE[2] STAINLESS STEEL SEAL WELDED TO SOLE PLATE(WELD PROCEDURE: GTAW F1-REV. 7)



WASHER DETAIL FOR EXPANSION BEARING ONLY
N.T.S.
QUANTITY: 10



DETAIL A
N.T.S.

STATE OF VERMONT
AGENCY OF TRANSPORTATION
HIGHWAY NO. VT. ROUTE 118
OVER TROUT RIVER
BRIDGE NO. 26
TOWN OF BERKSHIRE

COSMEC, INC. 70 SOUTH STREET WALPOLE, MA. 02081

SCALE: 3/16"=1" DRAWN BY: MK CHECK BY: NH
DATE: 1/15/04 DATE: 1/27/04

PREFORMED FABRIC PAD BEARINGS

CUSTOMER: A.L. ST. ONGE S.D. NUMBER: 59980 DRAWING NUMBER: 4048 REV.

REV.	BY	DATE	CHECKED	DATE