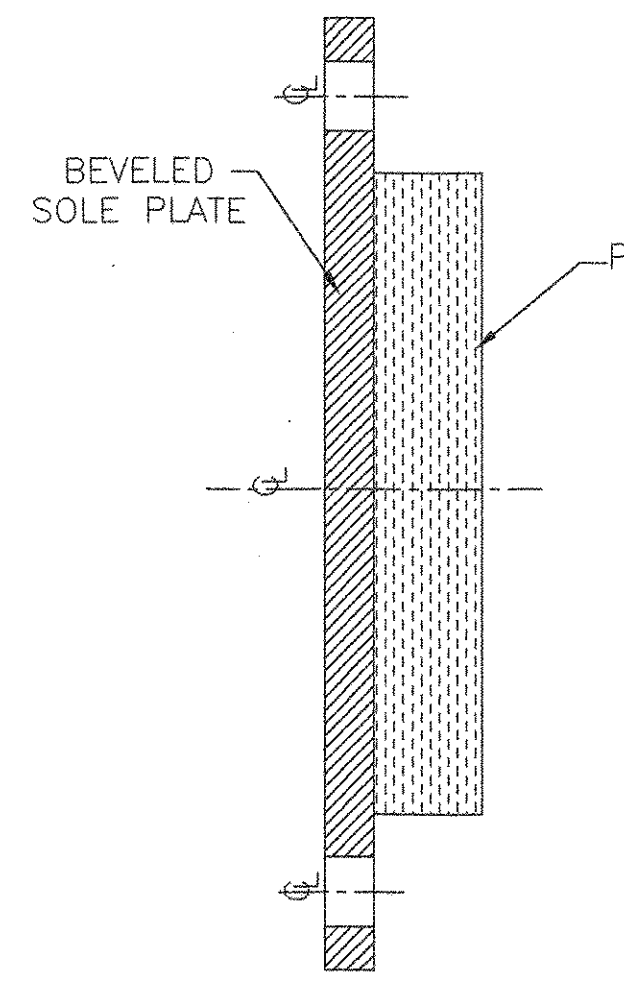
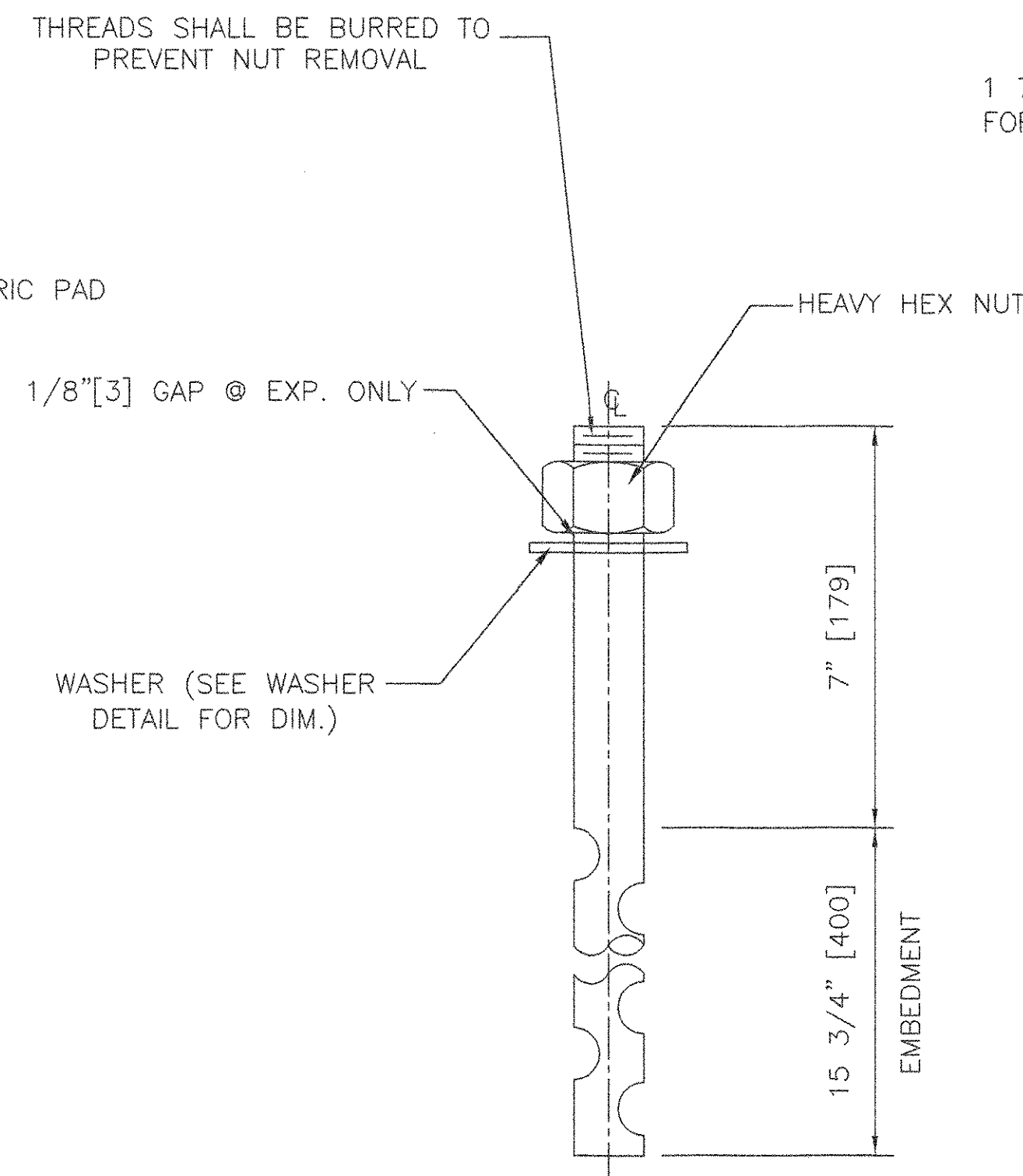


PLAN VIEW

LOCATION: ABUTMENT 1  
QUANTITY: 5

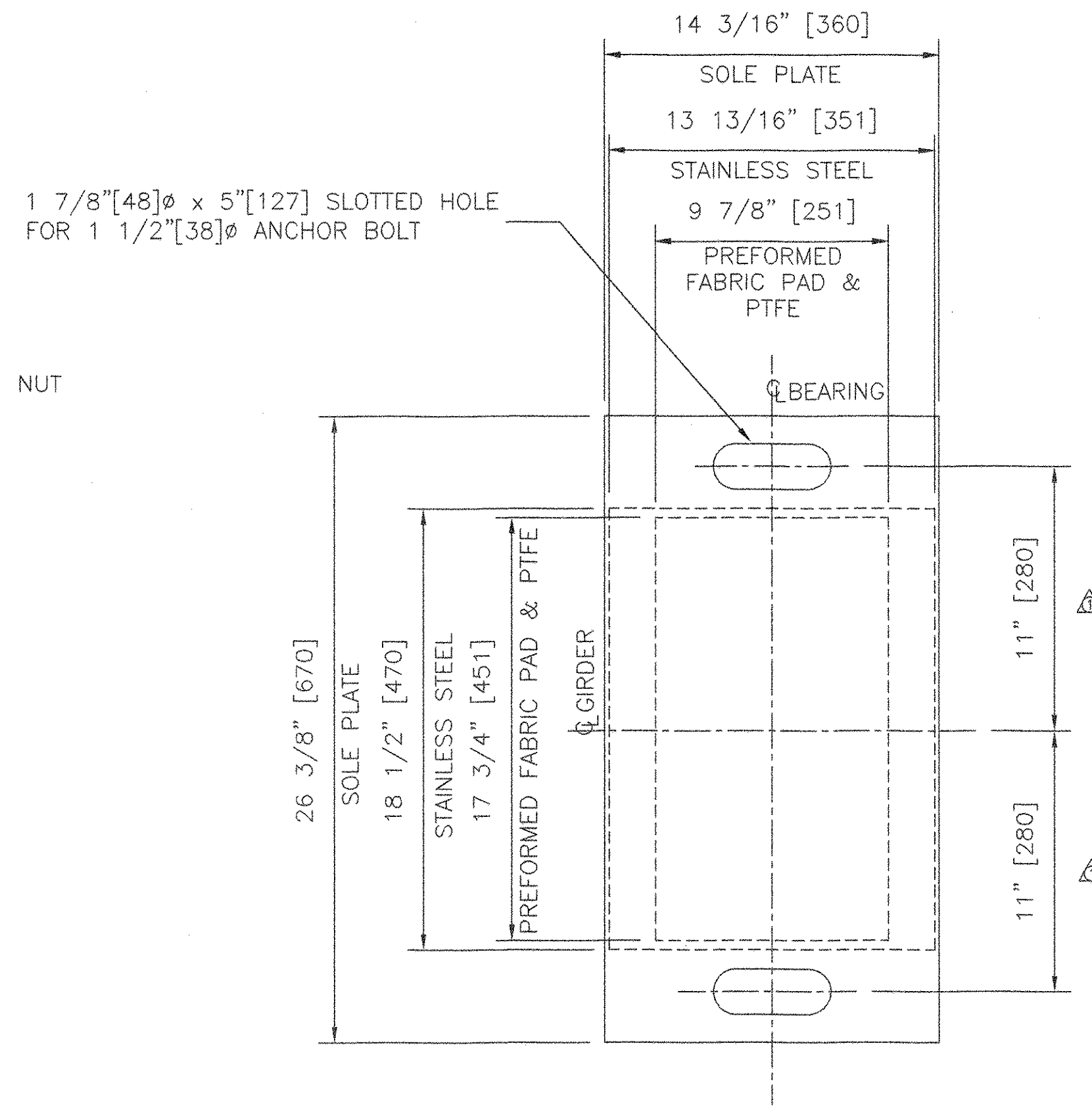


SECTION A-A  
LOCATION: ABUTMENT 1



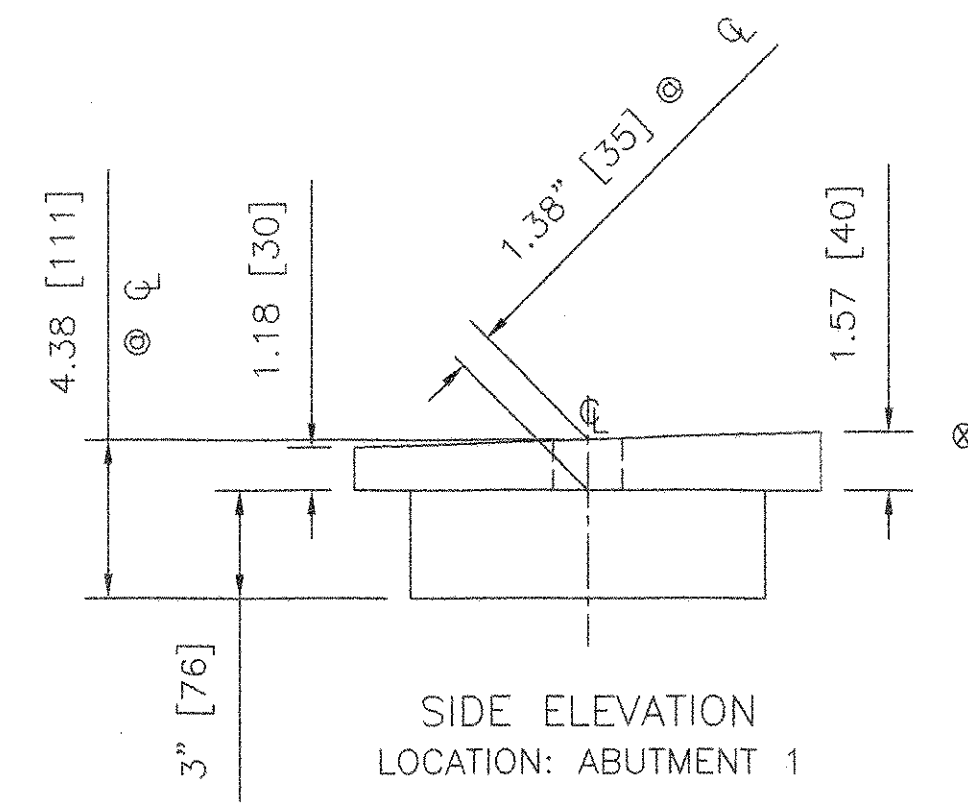
ANCHOR BOLT DETAIL

N.T.S.  
QUANTITY: 20  
1 1/2" [38] x 22 3/4" [578] LONG ASTM F1554 GR 55 SWEDGED ONE END ANCHOR BOLT WITH 4" [102] THREAD WITH ONE A36 PLATE WASHER AND ONE ASTM A563 HEAVY HEX NUT. ALL GALV.

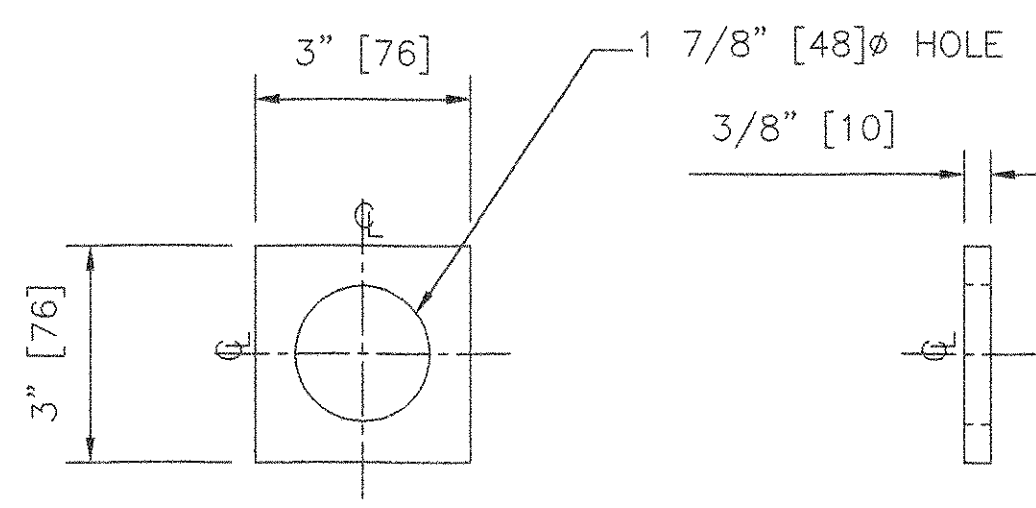


PLAN VIEW

LOCATION: ABUTMENT 2  
QUANTITY: 5

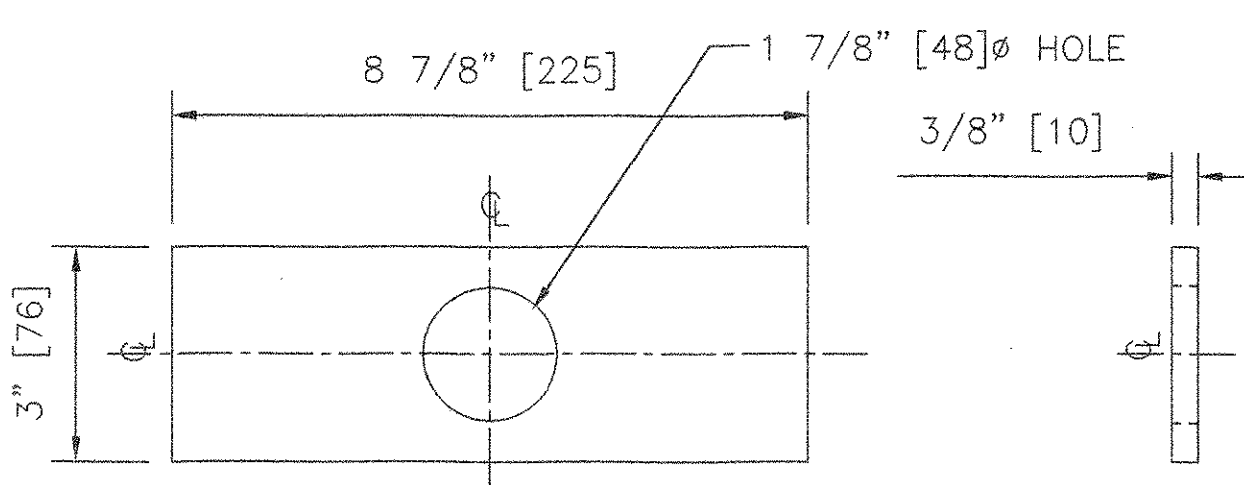


SIDE ELEVATION  
LOCATION: ABUTMENT 1



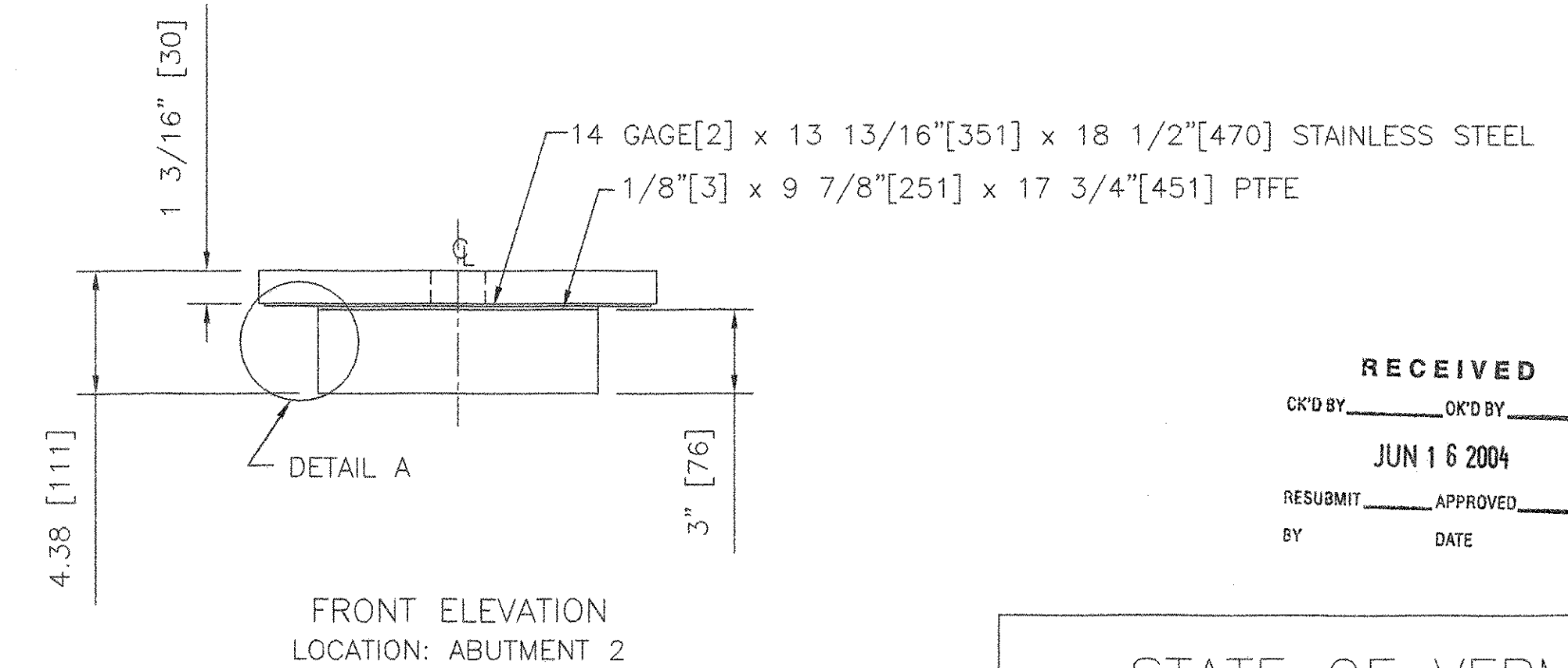
WASHER DETAIL FOR FIXED BEARING ONLY

N.T.S.  
QUANTITY: 10

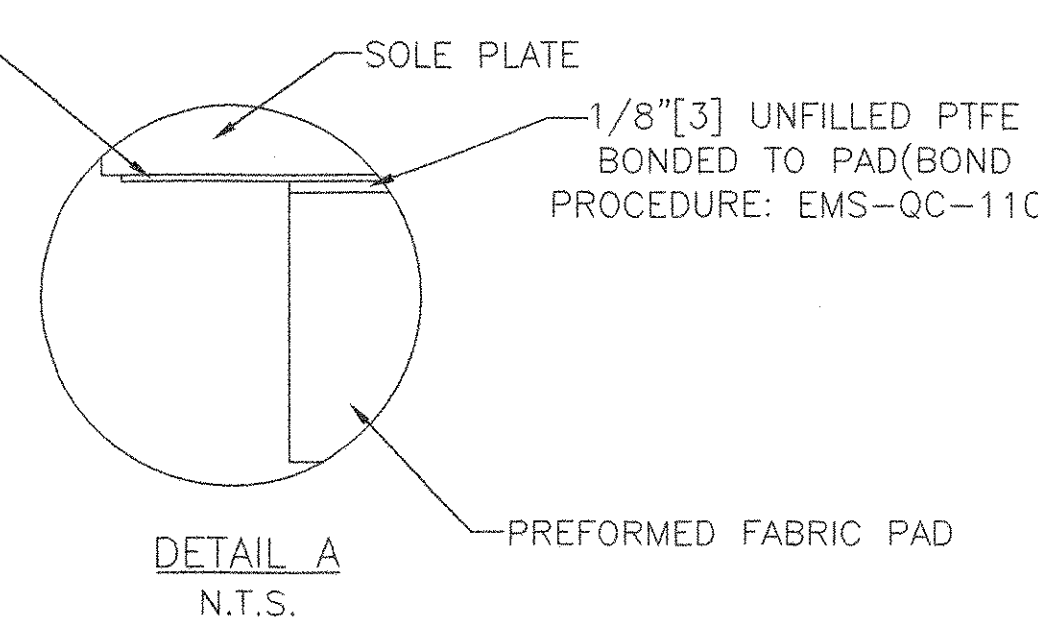


WASHER DETAIL FOR EXPANSION BEARING ONLY

N.T.S.  
QUANTITY: 10



FRONT ELEVATION  
LOCATION: ABUTMENT 2



DETAIL A  
N.T.S.

RECEIVED  
OK'D BY: \_\_\_\_\_  
DATE: JUN 16 2004  
RESUBMIT APPROVED BY: \_\_\_\_\_  
DATE: \_\_\_\_\_

STATE OF VERMONT  
AGENCY OF TRANSPORTATION  
HIGHWAY NO. VT. ROUTE 118  
OVER TROUT RIVER  
BRIDGE NO. 26  
TOWN OF BERKSHIRE

COSMEC, INC. 70 SOUTH STREET WALPOLE, MA. 02081

SCALE: 3/16"=1" DRAWN BY: MK CHECK BY: NH  
DATE: 1/15/04 DATE: 1/27/04

PREFORMED FABRIC PAD BEARINGS

CUSTOMER: A.L. ST. ONGE S.O.L. NUMBER: 59980 DRAWING NUMBER: 4048 REV: 1

REV.	ADDED SLOT OFFSET DIMENSIONS	BY	DATE	CHECKED	DATE
1		MK	6/8/04		

MATERIAL:  
STEEL- ASTM A709 GRADE 50 ZINC METALLIZED  
STAINLESS STEEL- ASTM A240 TYPE 304, 10 RMS FINISH OR LESS  
PTFE- ASTM D4894 VIRGIN UNFILLED  
PREFORMED FABRIC PAD- AASHTO 18.4.9.1 DIV. II  
ANCHOR BOLTS- F1554 GRADE 55 GALVANIZED

- NOTES:
- DESIGN CRITERIA:
    - BASE PLATE TO CONCRETE DESIGN PRESSURE = 1,000 PSI (6.895MPa)
    - MINIMUM ALLOWABLE DESIGN ROTATION = 0.015 RADIAN
    - HORIZONTAL DESIGN CAPACITY SHALL BE A MINIMUM 10% OF VERTICAL LOAD
    - DESIGN LOAD PER BEARING = 174.5 KIPS [776KN]
  - ALL BEARING DEVICES SHALL BE METALIZED AS PER SUBSECTION 531.04 (B) AND 506.15(b) OF THE GENERAL SPECIAL PROVISIONS. AREAS OF METALIZING DAMAGED BY FIELD WELDING OR HANDLING SHALL BE REPAIRED IN ACCORDANCE WITH SUPPLEMENTAL SPECIFICATIONS 513 WHICH REFERENCES ASTM A760
  - ALL EDGED CORNERS SHALL BE ROUNDED TO 1/16" [1.6] RADIUS
  - Ø MARKS THE THICK END OF BEVEL
  - UNITS THAT ARE IN [ ] ARE IN mm
  - COSMEC REPRESENTATIVE: MR. MATT McANDREWS (508)668-6600
  - LOCATION OF FABRICATION: 70 SOUTH STREET WALPOLE MA, 02081