

CONSTRUCT ROCK VANE
STA. 27+25, RT.

CONSTRUCT RIFFLE
STA. 22+90 - STA. 24+10
RIFFLE HEAD ELEV. 404.6
RIFFLE SLOPE 0.5%

CONSTRUCT ROCK WEIR
STA. 25+00
STA. 28+00

CONSTRUCT CHANNEL BLOCK
STA. 23+25, RT.
TOP ELEV. 408.0

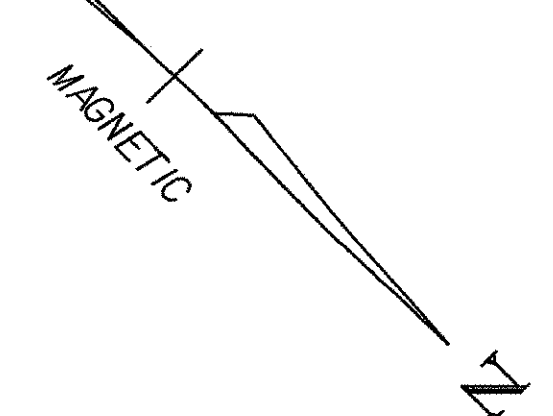
CONSTRUCT TREE REVETMENT
STA. 27+50, RT. - STA. 28+10, RT.
STA. 28+70, RT. - STA. 29+50, RT.

REMOVE HISTORIC BRIDGE ABUTMENT
STA. 28+00

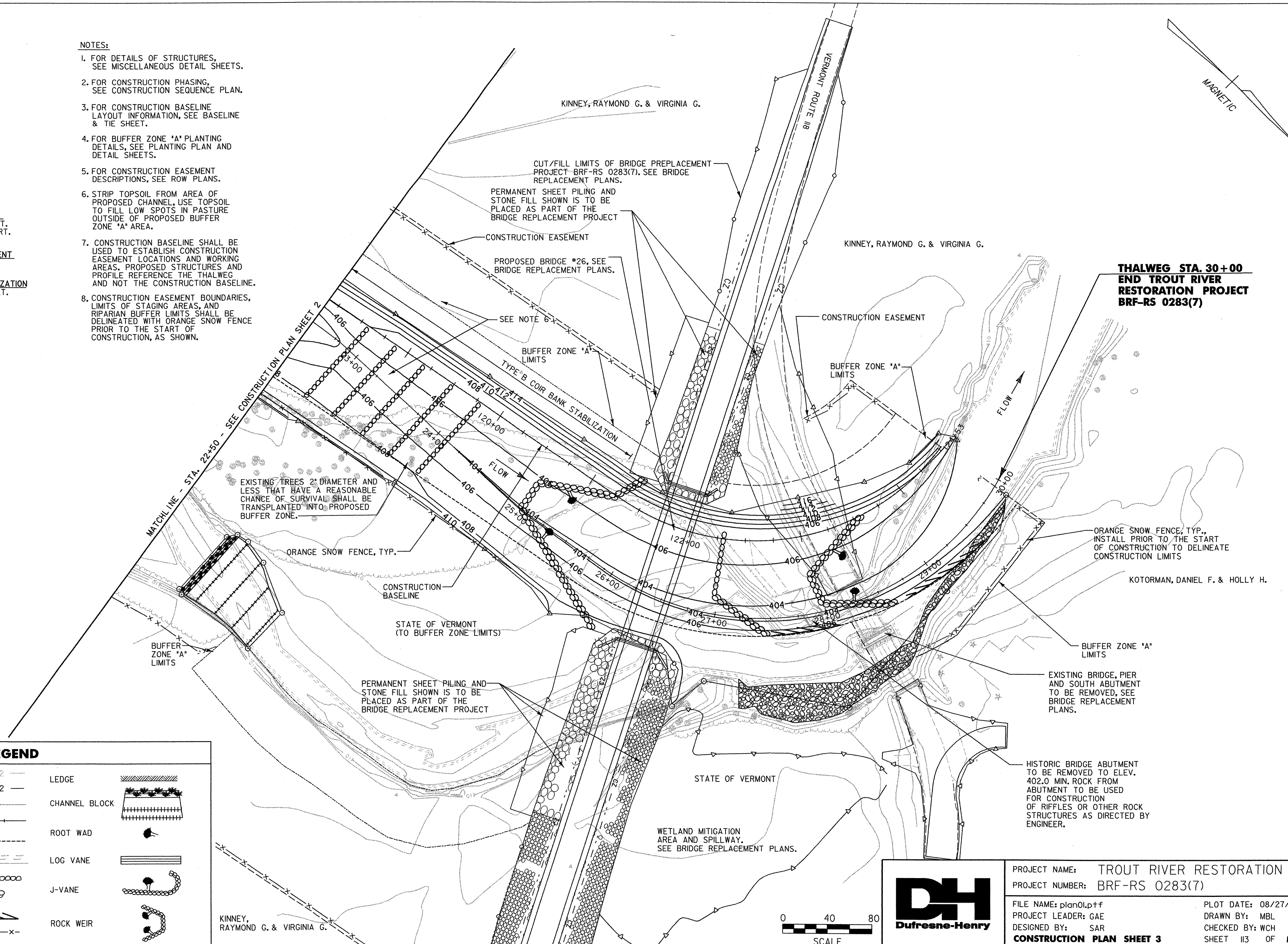
INSTALL TYPE B COIR BANK STABILIZATION
STA. 22+50, LT. - STA. 25+50, LT.

NOTES:

- FOR DETAILS OF STRUCTURES, SEE MISCELLANEOUS DETAIL SHEETS.
- FOR CONSTRUCTION PHASING, SEE CONSTRUCTION SEQUENCE PLAN.
- FOR CONSTRUCTION BASELINE LAYOUT INFORMATION, SEE BASELINE & TIE SHEET.
- FOR BUFFER ZONE 'A' PLANTING DETAILS, SEE PLANTING PLAN AND DETAIL SHEETS.
- FOR CONSTRUCTION EASEMENT DESCRIPTIONS, SEE ROW PLANS.
- STRIP TOPSOIL FROM AREA OF PROPOSED CHANNEL, USE TOPSOIL TO FILL LOW SPOTS IN PASTURE OUTSIDE OF PROPOSED BUFFER ZONE 'A' AREA.
- CONSTRUCTION BASELINE SHALL BE USED TO ESTABLISH CONSTRUCTION EASEMENT LOCATIONS AND WORKING AREAS, PROPOSED STRUCTURES AND PROFILE. REFERENCE THE THALWEG AND NOT THE CONSTRUCTION BASELINE.
- CONSTRUCTION EASEMENT BOUNDARIES, LIMITS OF STAGING AREAS, AND RIPARIAN BUFFER LIMITS SHALL BE DELINEATED WITH ORANGE SNOW FENCE PRIOR TO THE START OF CONSTRUCTION, AS SHOWN.

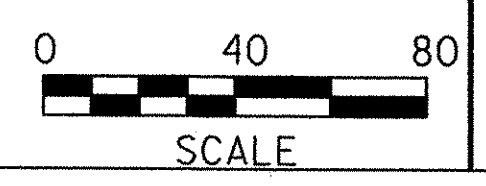


**THALWEG STA. 30+00
END TROUT RIVER
RESTORATION PROJECT
BRF-RS 0283(7)**



LEGEND

EXISTING CONTOUR	402	LEDGE	
PROPOSED CONTOUR	402	CHANNEL BLOCK	
EXISTING THALWEG		ROOT WAD	
DESIGN THALWEG	12+00	LOG VANE	
DESIGN BANKFULL WIDTH		J-VANE	
EXISTING CHANNEL		ROCK WEIR	
CONSTRUCTED RIFFLE			
ROCK VANE			
TREE REVETMENT			
ORANGE SNOW FENCE	x-x-x-x-x		



PROJECT NAME: TROUT RIVER RESTORATION
PROJECT NUMBER: BRF-RS 0283(7)
FILE NAME: plan01.pxf
PROJECT LEADER: GAE
DESIGNED BY: SAR
CONSTRUCTION PLAN SHEET 3

PLOT DATE: 08/27/2003
DRAWN BY: MBL
CHECKED BY: WCH
SHEET 113 OF 140

C:\WORK\PLANS\0283\BRF-RS 0283(7).DWG