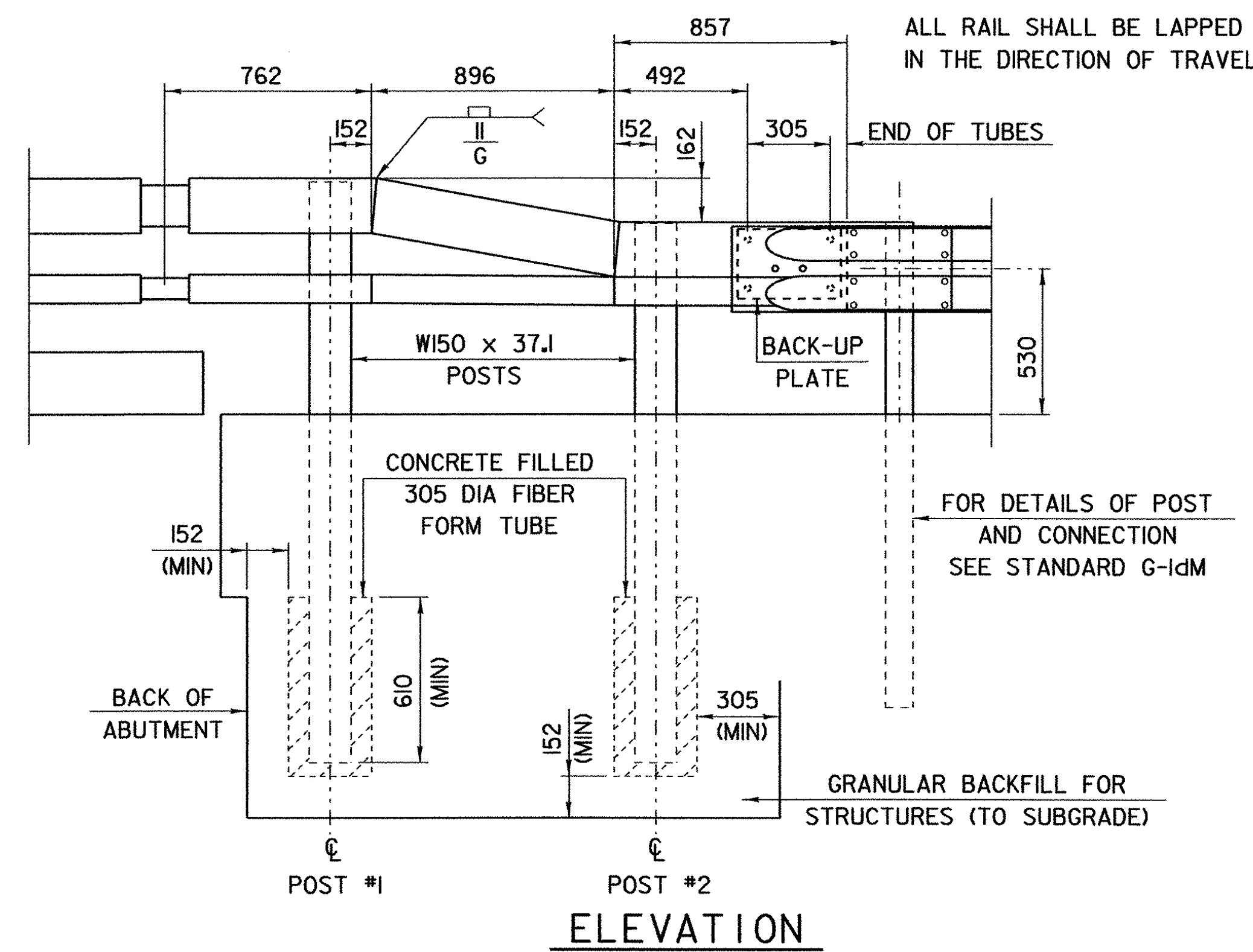
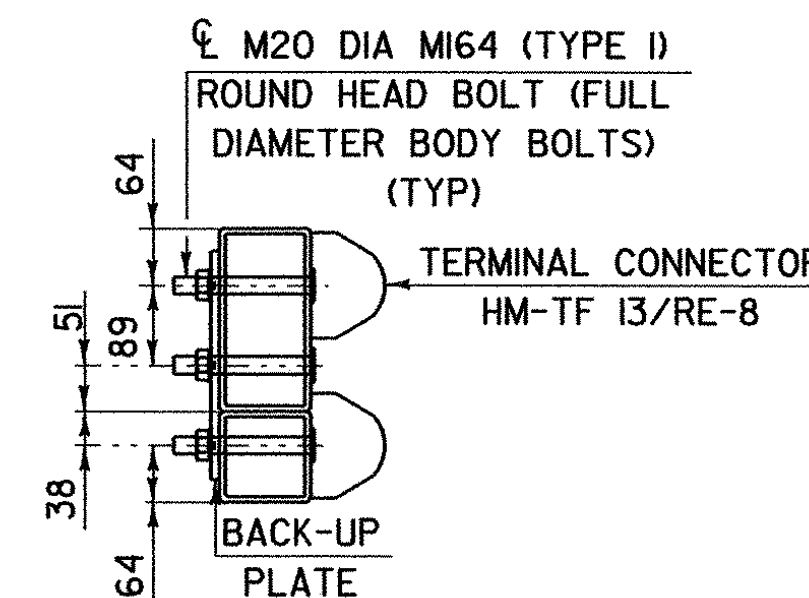


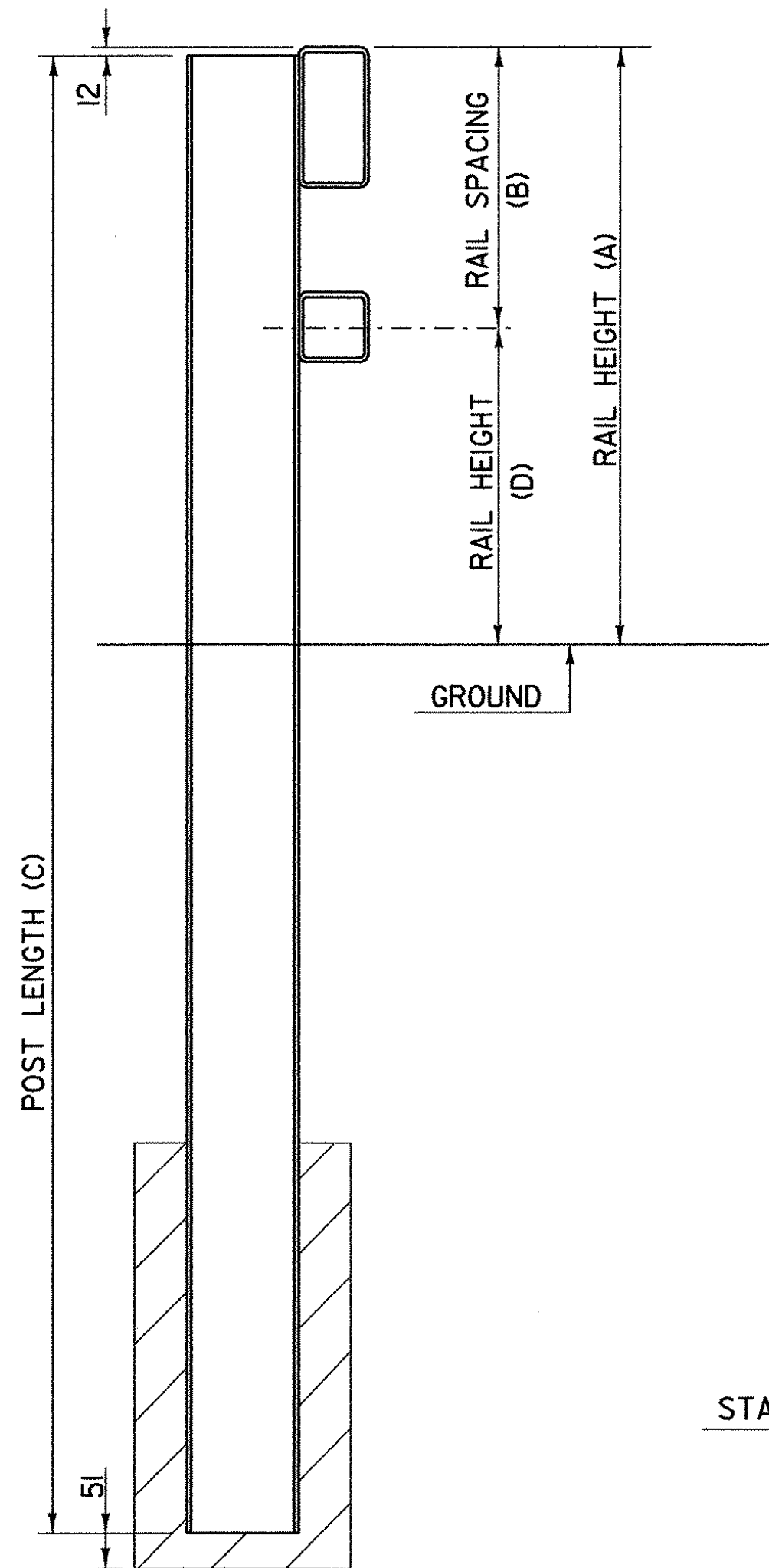
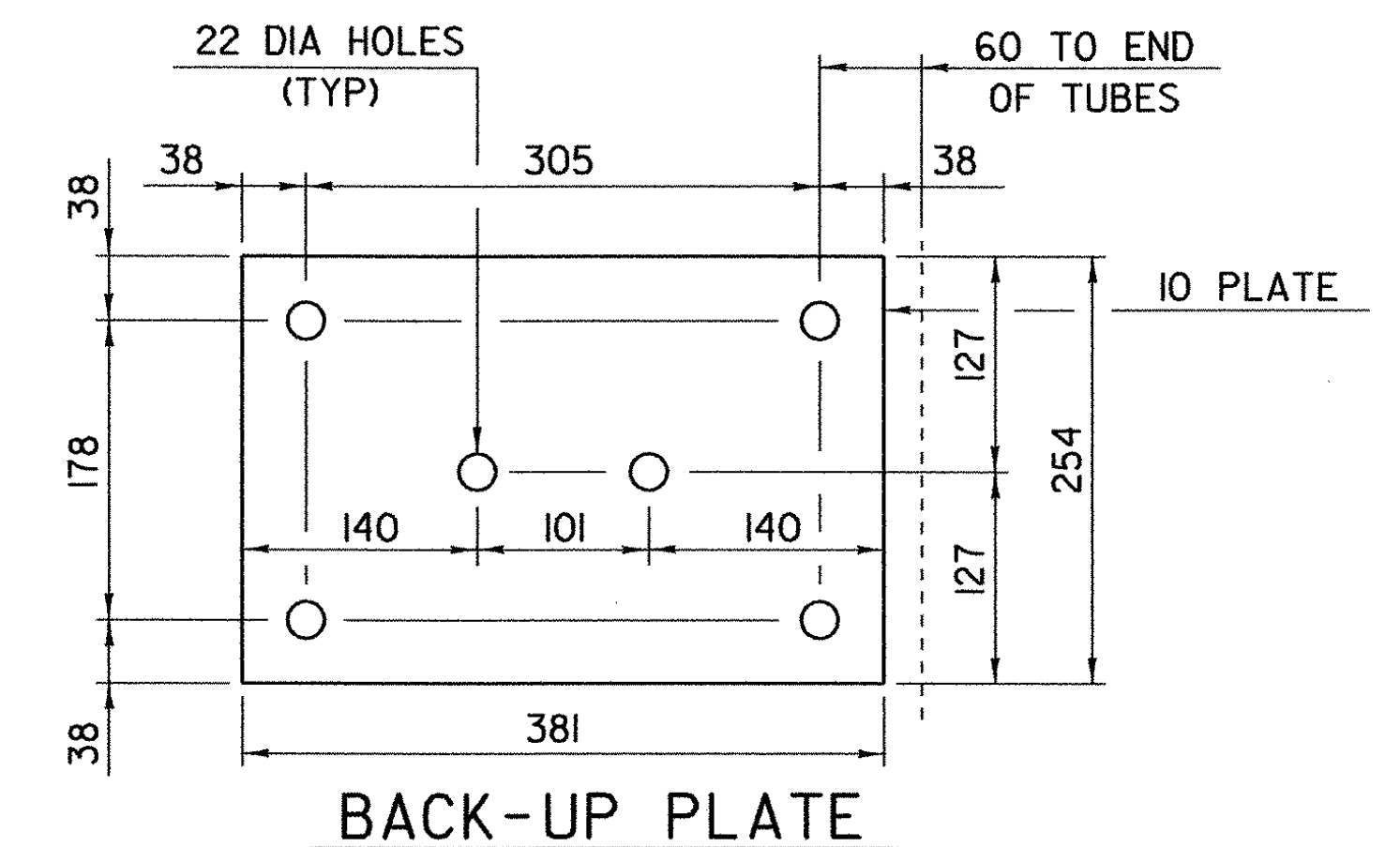
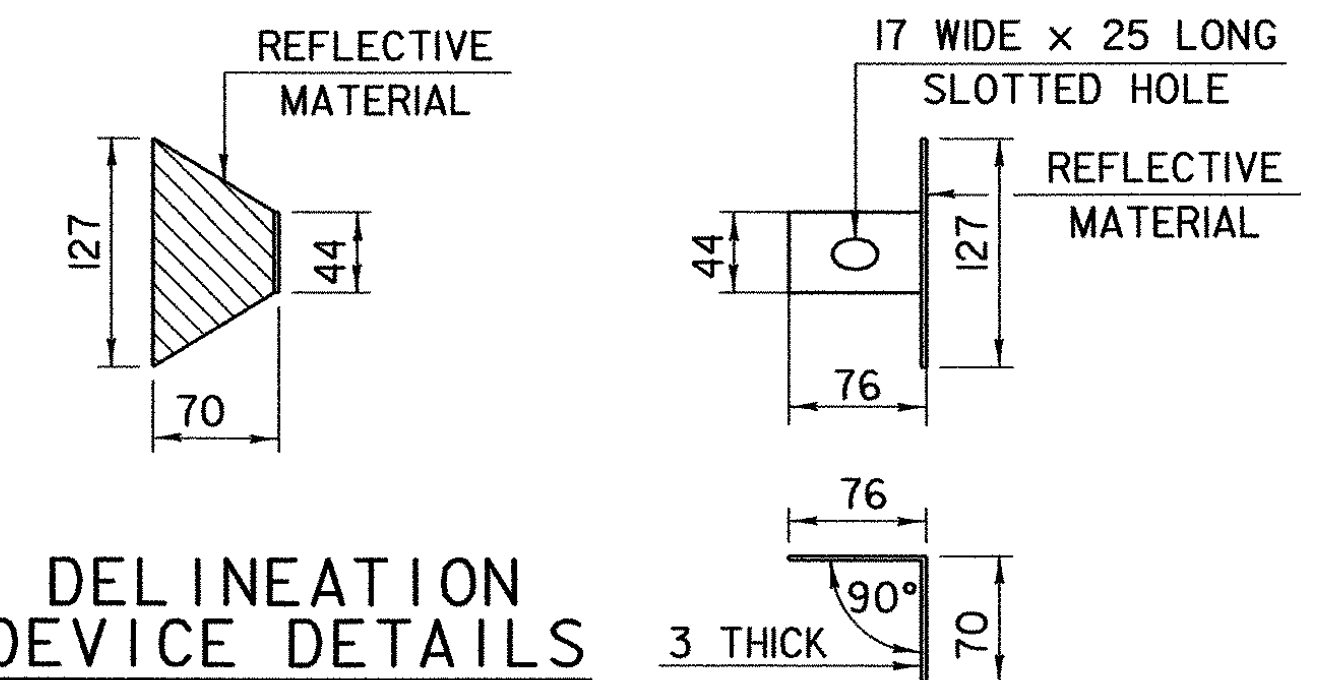
**RAILING TRANSITION ELEVATION**



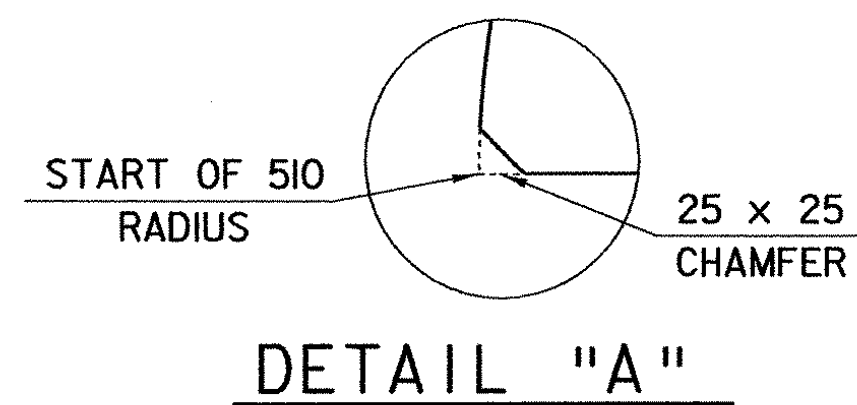
**SECTION THROUGH GUARD RAIL CONNECTION AT TERMINAL CONNECTOR**



**DELINEATION DEVICE DETAILS**

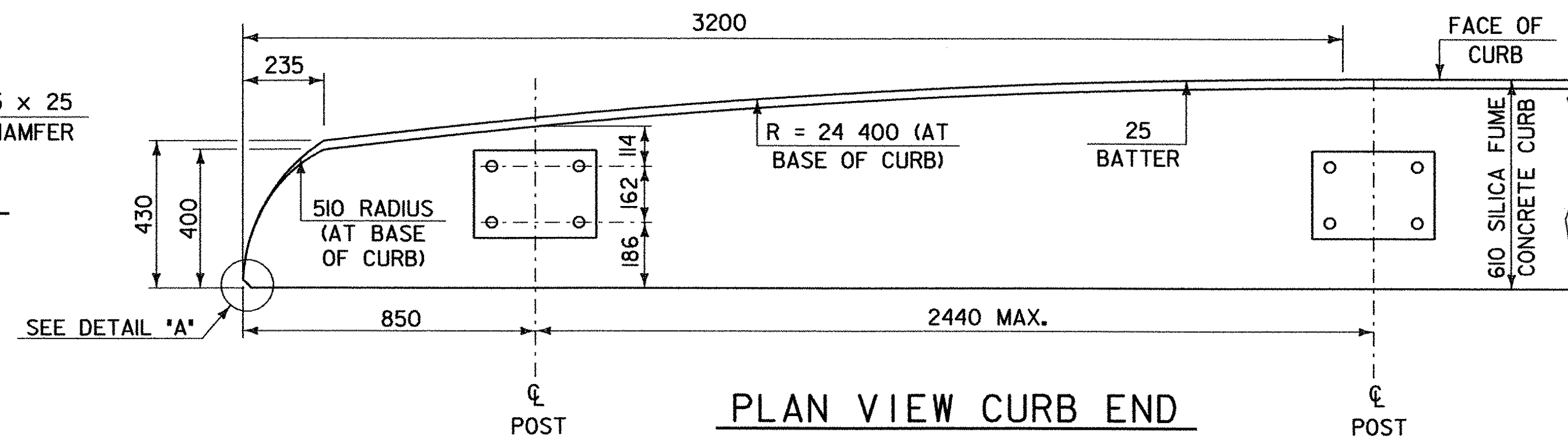


**TYPICAL SECTION**



**DETAIL "A"**

POST NUMBER	RAIL HEIGHT (A)	RAIL SPACING (B)	POST LENGTH (C)	RAIL HEIGHT (D)
1	860	405	2134	455
2	702	254	1956	448



**PLAN VIEW CURB END**

**NOTES:**

1. REFER TO STANDARD DETAIL BR1-97M FOR ADDITIONAL DETAILS, NOTES AND MATERIAL SPECIFICATIONS.
2. TO FACILITATE FIELD FIT - UP OF THE TRANSITION RAILING, POSTS SHALL BE SET LOOSELY INTO FIBER FORM TUBES WHILE TRANSITION PARTS ARE BEING ASSEMBLED. POST HOLES SHALL BE BACKFILLED WITH A CONCRETE MIX APPROVED BY THE ENGINEER. PAYMENT FOR COMPONENTS, INCLUDING BACKUP PLATE AND END TERMINAL CONNECTOR FOR GUARD RAIL, AUGERING, FIBER FORM TUBES AND CONCRETE, AND INSTALLATION SHALL BE CONSIDERED INCIDENTAL TO BRIDGE RAILING, N.E.T.C. 2 RAIL.
3. THE REFLECTORIZED ALUMINUM DELINEATION IS TO BE ERECTED EVERY 9m (OR CLOSEST POST) WITH A M16 BOLT. DELINEATORS SHALL MEET SPECIFICATION REQUIREMENTS FOR ASTM B209 ALLOY 5052-H32.
4. REFLECTIVE MATERIAL SHALL MEET REQUIREMENTS OF SUBSECTION 750.08 AND SHALL BE OF ENCAPSULATED LENS SILVER OR AMBER. AMBER IS TO BE INSTALLED ON THE DRIVER'S LEFT AND SILVER ON THEIR RIGHT.
5. ON BRIDGES WITH A SIDEWALK, DELINEATORS ARE NOT TO BE INSTALLED ON THE SIDEWALK SIDE OF THE BRIDGE (I.E. DELINEATORS INSTALLED ONLY ON THE CURB SIDE AND ON THE APPROACH ON THE CURB SIDE). PAYMENT SHALL BE SUBSIDIARY TO ALL OTHER ITEMS.
6. ALL APPROACH RAIL SPLICES SHALL BE LAPPED IN THE DIRECTION OF TRAFFIC FLOW.
7. SEE STANDARD G-1M AND G-1dM FOR ADDITIONAL INFORMATION.

**NETC Rail Details**

PROJECT NAME:	BERKSHIRE
PROJECT NUMBER:	BRF-RS 0283(7)
FILE NAME:	str5/78f184/netcraill.dgn
PROJECT LEADER:	C. Keller
DESIGNED BY:	br1-97m.i
PLOT DATE:	13-AUG-2003
DRAWN BY:	G. Shangraw
CHECKED BY:	
SHEET	87 OF 140