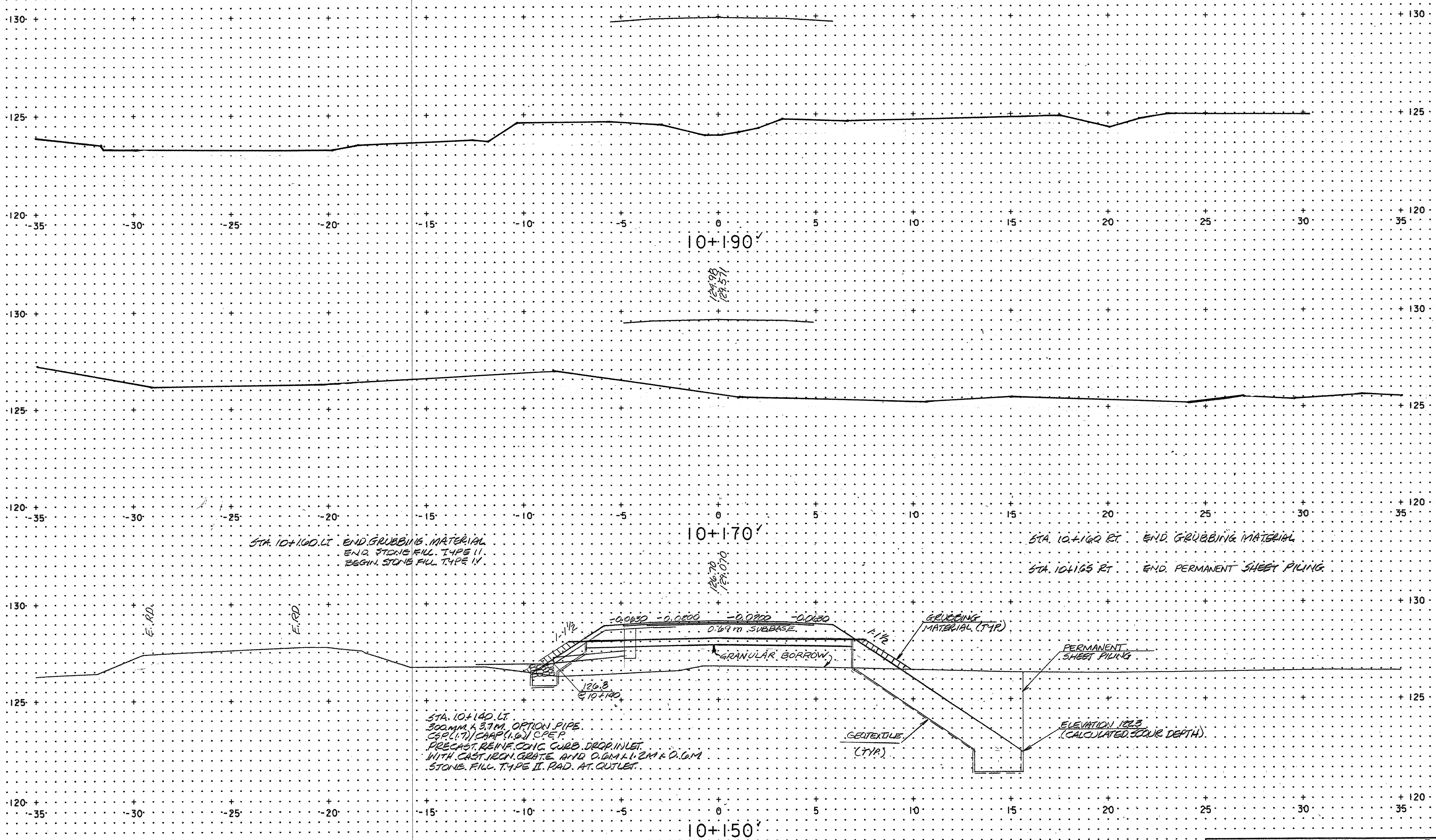


7/ur-5/19445520/02837.rvt.dgn



STA. 10+100.00 LT. END GRUBBING MATERIAL
 END STONE FILL TYPE II.
 BEGIN STONE FILL TYPE IV.

STA. 10+100.00 RT. END GRUBBING MATERIAL
 STA. 10+105.00 RT. END PERMANENT SHEET PILING.

STA. 10+140.00 LT.
 300MM x 3.7M. OPTION PIPE
 C/P (1.7) / C/A/P (1.6) C/P
 PRECAST REINF. CONC. CURB DRAINLET
 WITH CAST IRON GRATE AND 0.6M x 1.2M x 0.6M
 STONE FILL TYPE II. RAD. AT. OUTLET.

10+148.30 BEGIN EXTRA DEPTH
 SUBBASE TAPER
 (SEE VT. 118 PROFILE)

FROM STA. 10+150 TO STA. 10+190 VT. RTE. 118
 PROJECT NAME: VERMONT ROUTE 118 OVER TROUT RIVER
 PROJECT NO. BRS 0283(7)
 PLOTTED BY: CJM 10/28/96 CHECKED BY: JAV 10/29/96
 SHEET 70 OF 140 SHEETS

SCALE 1" = 1m

78f184/zf184x03