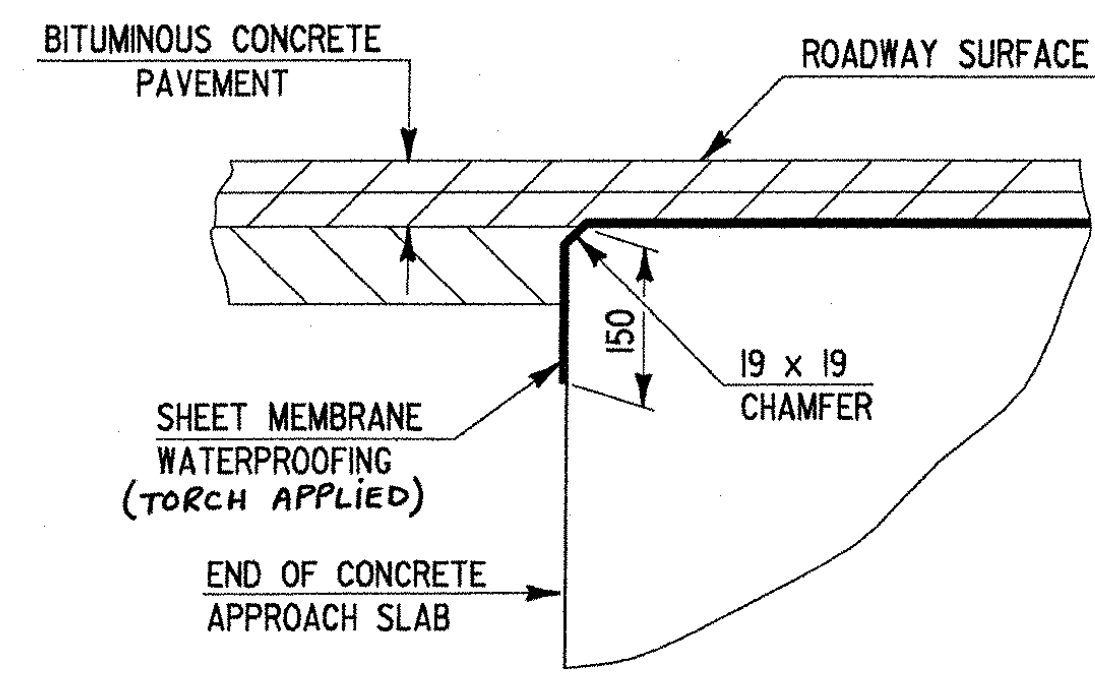
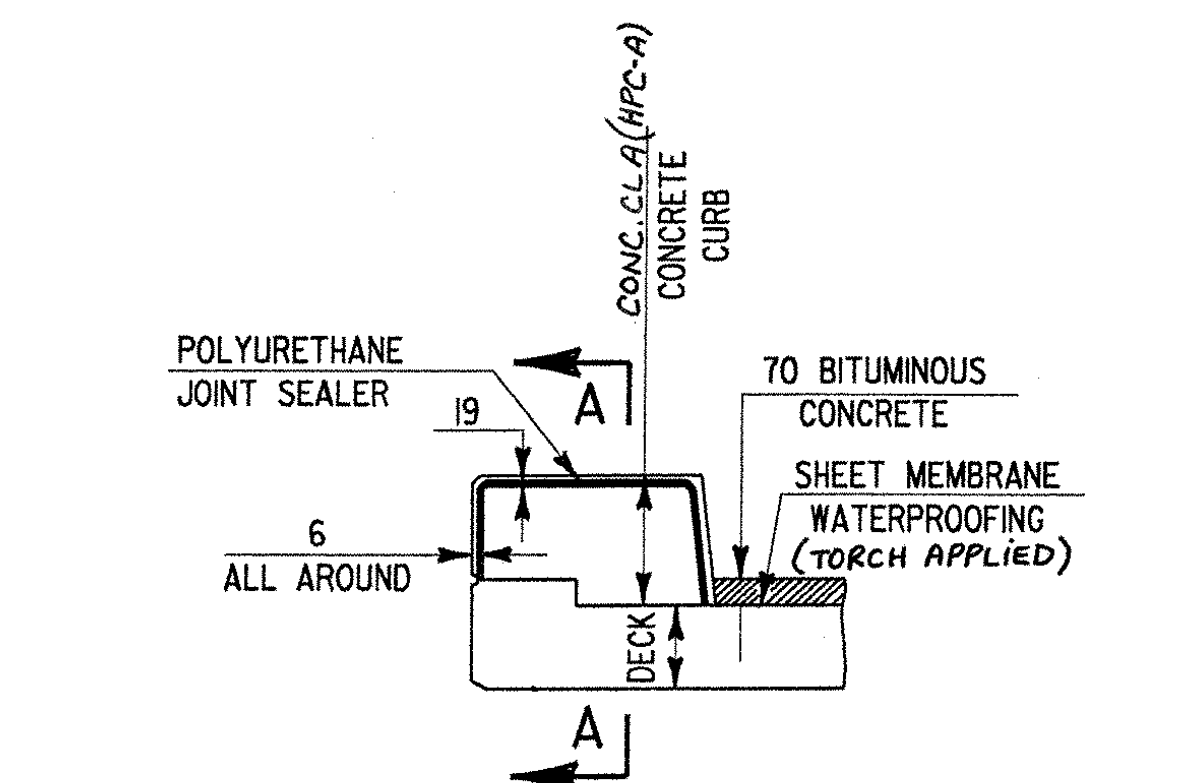


CONCRETE CURB CONSTRUCTION JOINT NOTES:

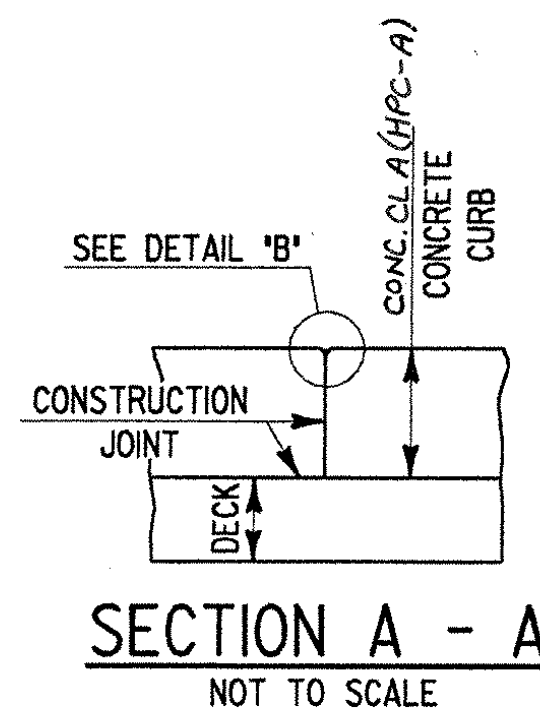
1. CONSTRUCTION JOINTS THROUGH CONCRETE CURBS SHALL BE SPACED MAXIMUM 4500 CENTER TO CENTER AND SHALL BE 500 MINIMUM FROM THE CENTER OF THE NEAREST BRIDGE RAIL POST. CONCRETE SHALL BE PLACED IN ALTERNATING SECTIONS WITH A MINIMUM OF 48 HOURS DELAY BETWEEN ADJACENT POURS.
2. LONGITUDINAL REINFORCING SHALL PASS THROUGH CONCRETE CURB CONSTRUCTION JOINTS.
3. POLYURETHANE JOINT SEALER AND BLAST CLEANING SHALL BE INCLUDED IN THE UNIT PRICE BID FOR ITEM 524.2L.
4. SHEET MEMBRANE WATERPROOFING SHALL EXTEND TO FACE OF CURB AS SHOWN ABOVE LEFT.
5. ALL CONCRETE IN CURBS SHALL BE CONCRETE, CLASS A (HPC-A)



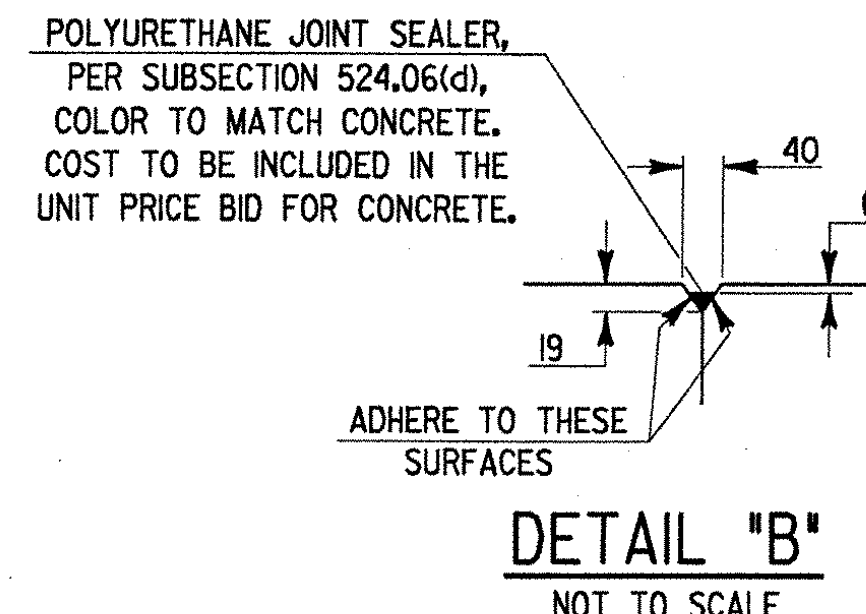
DETAIL FOR SHEET MEMBRANE AT APPROACH SLAB ENDS
NOT TO SCALE



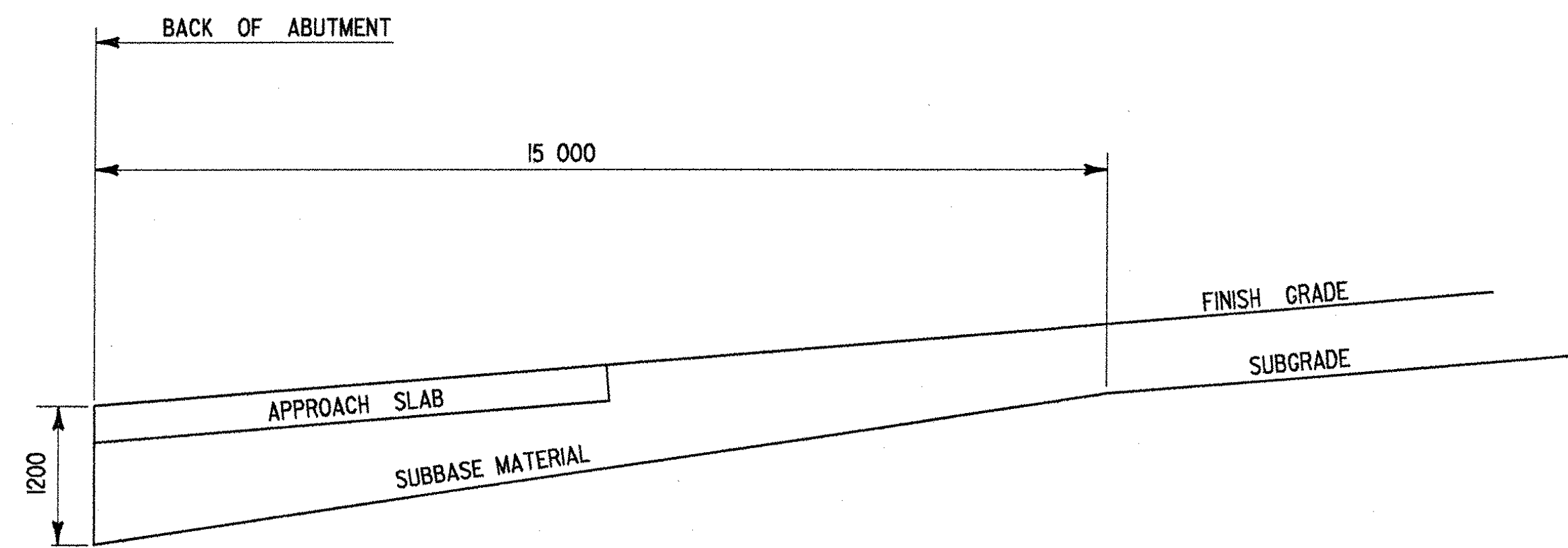
TYPICAL SECTION THROUGH CONCRETE CURB CONSTRUCTION JOINT
NOT TO SCALE



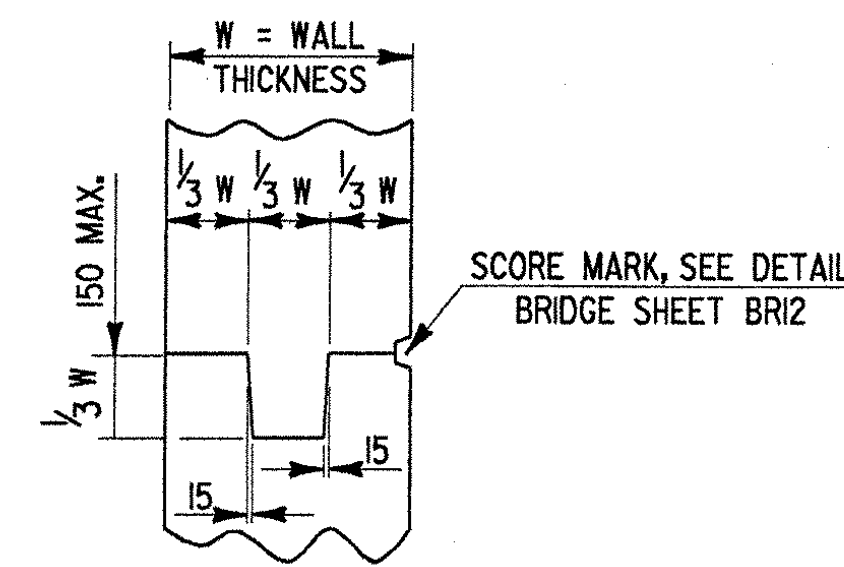
SECTION A - A
NOT TO SCALE



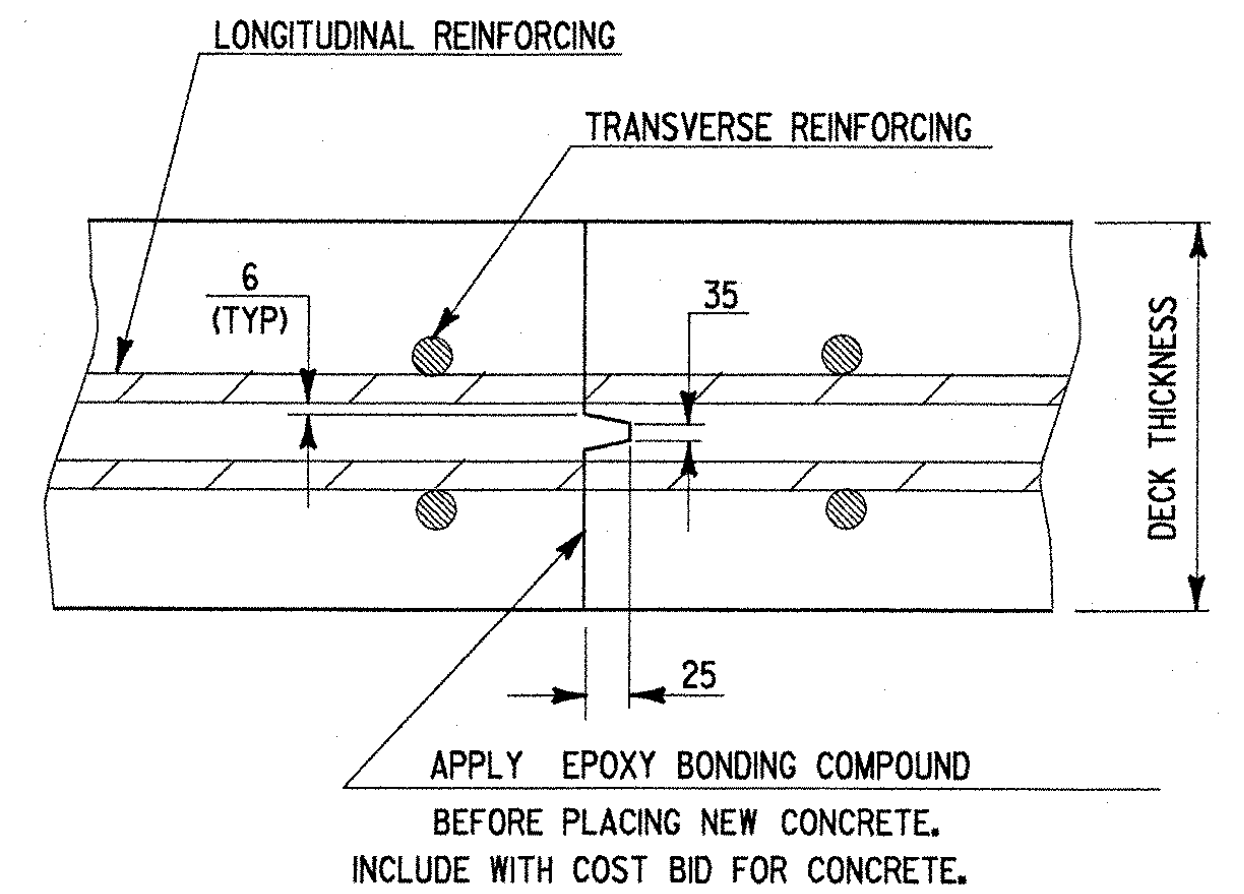
DETAIL "B"
NOT TO SCALE



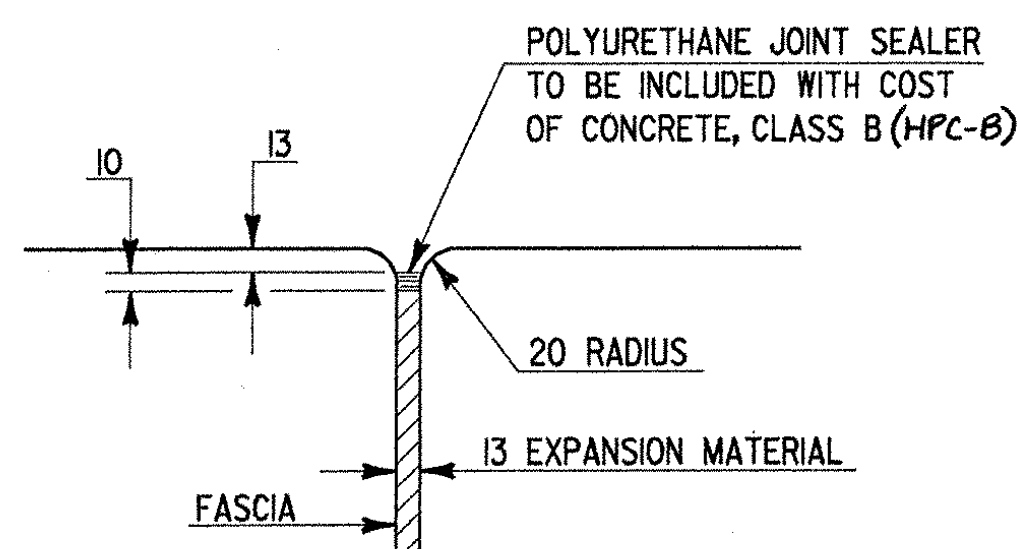
SUBBASE DETAIL AT ABUTMENTS
NOT TO SCALE



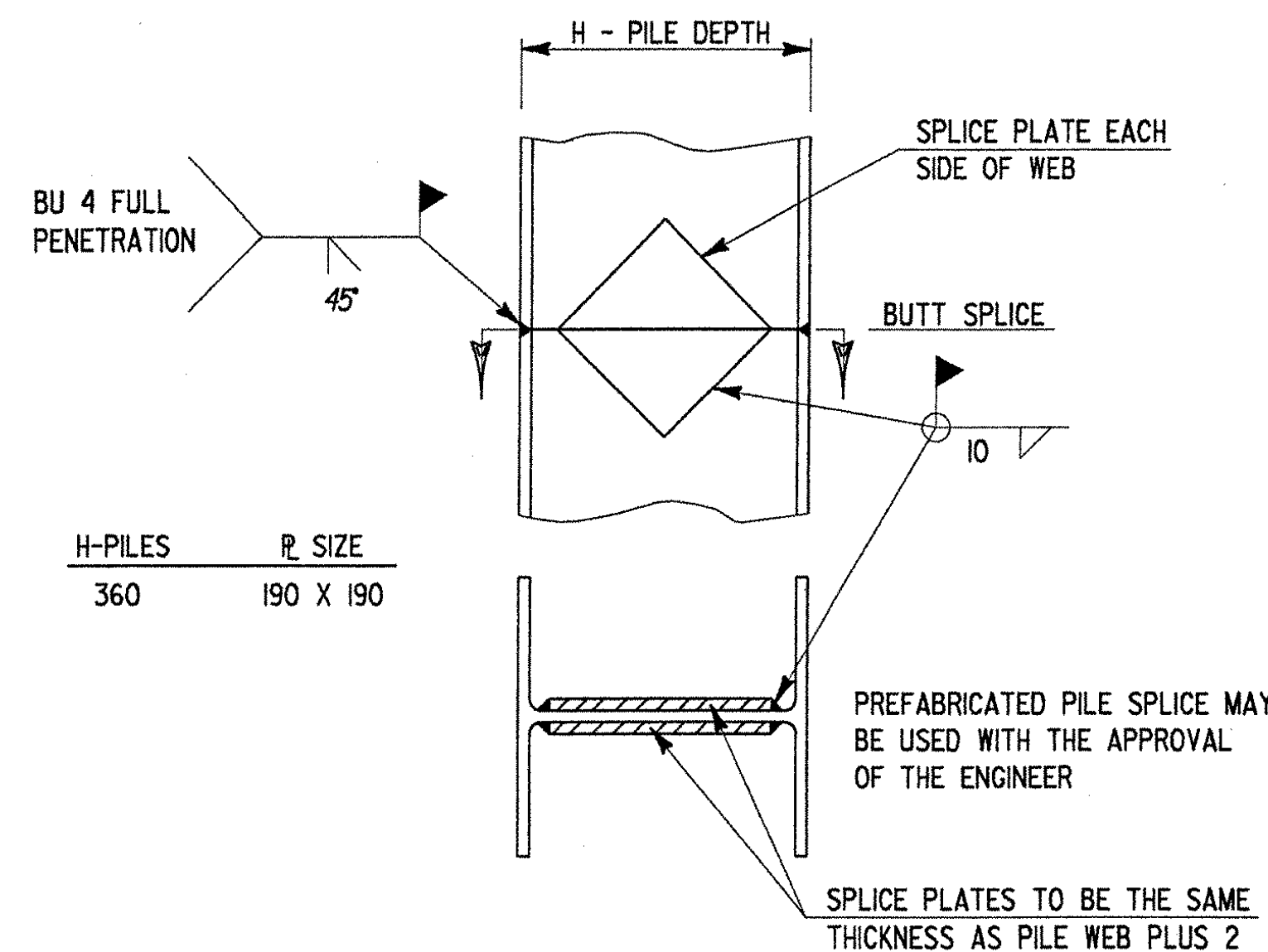
TYPICAL CONCRETE CONSTRUCTION JOINT
NOT TO SCALE



TRANSVERSE BRIDGE SLAB CONSTRUCTION JOINT DETAILS
NOT TO SCALE



JOINT BETWEEN FASCIA AND WINGWALL
NOT TO SCALE



DETAIL OF PILE SPLICE
NOT TO SCALE

PILE SPLICE NOTES:

1. STEEL PILING SHALL BE ROLLED STEEL SECTIONS PER STANDARD SPECIFICATION 730.
2. PILES, SPLICE PLATES AND POINT REINFORCEMENT SHALL BE NEW MATERIAL (PER STANDARD SPECIFICATION 730) CONFORMING TO THE REQUIREMENTS OF AASHTO M 270M, GRADE 250.
3. FOR ADDITIONAL INFORMATION SEE NOTE 24, BRIDGE SHEET I.

STATE OF VERMONT AGENCY OF TRANSPORTATION

Town Of	BERKSHIRE	Bridge No.	26
Highway No.	VT. ROUTE 118	Log Sta.	
		Surv. Sta.	
VT. ROUTE 118 OVER TROUT RIVER			
MISCELLANEOUS DETAILS			
Designed By	S. JOHNSON	Drawn By	S. DELIA
Checked By	S. JOHNSON	Bridge Design Supervisor	
	Date	Date	
	02/00		
PROJECT	BERKSHIRE	PROJECT NO.	BRF-RS 0283(7)
I.G.C. Info.	y:\914562\zf184.mdt.dgn		IPARM:zf184.mdt.j
Bridge Sheet No.	BR19	Sheet	58 of 140