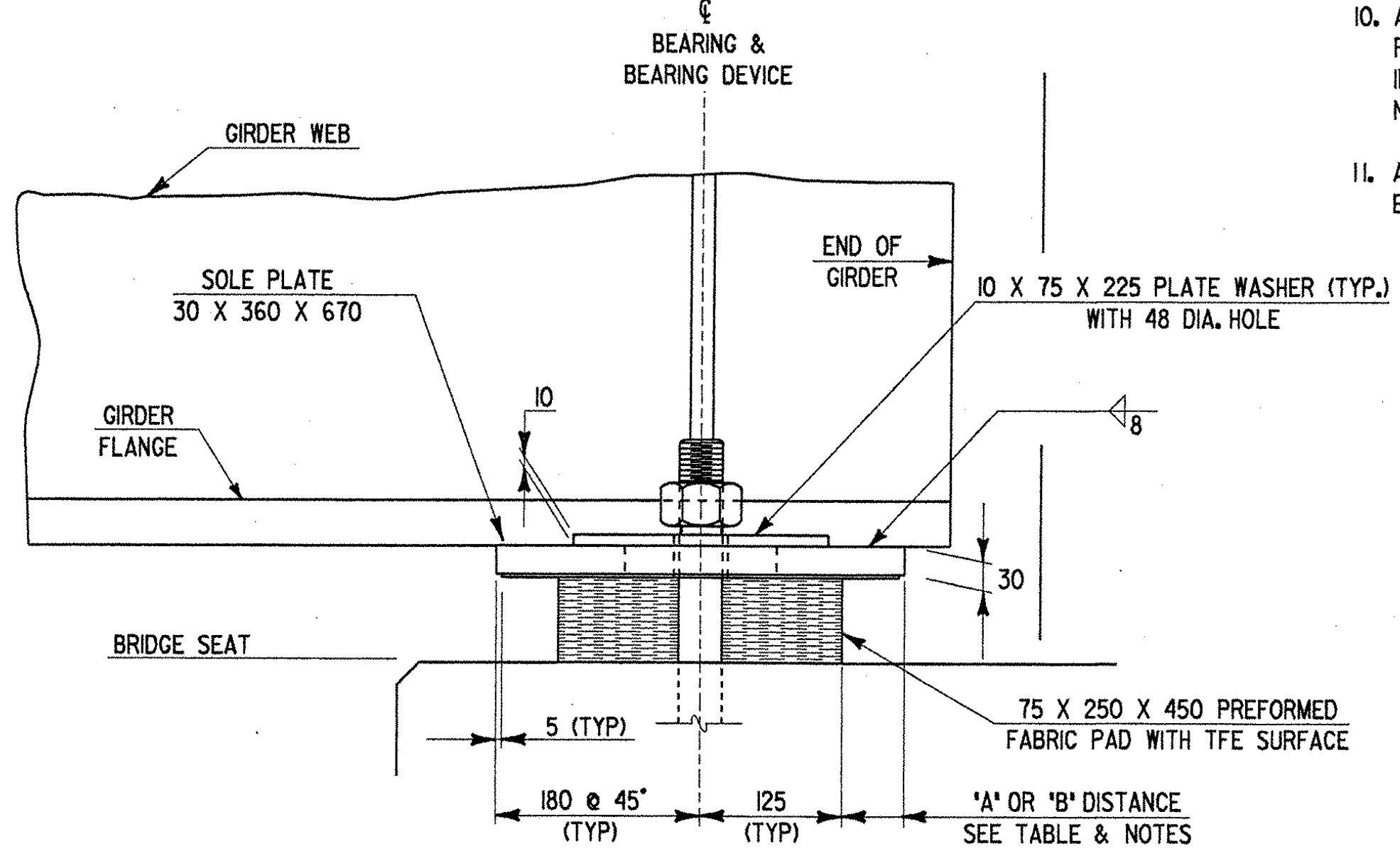
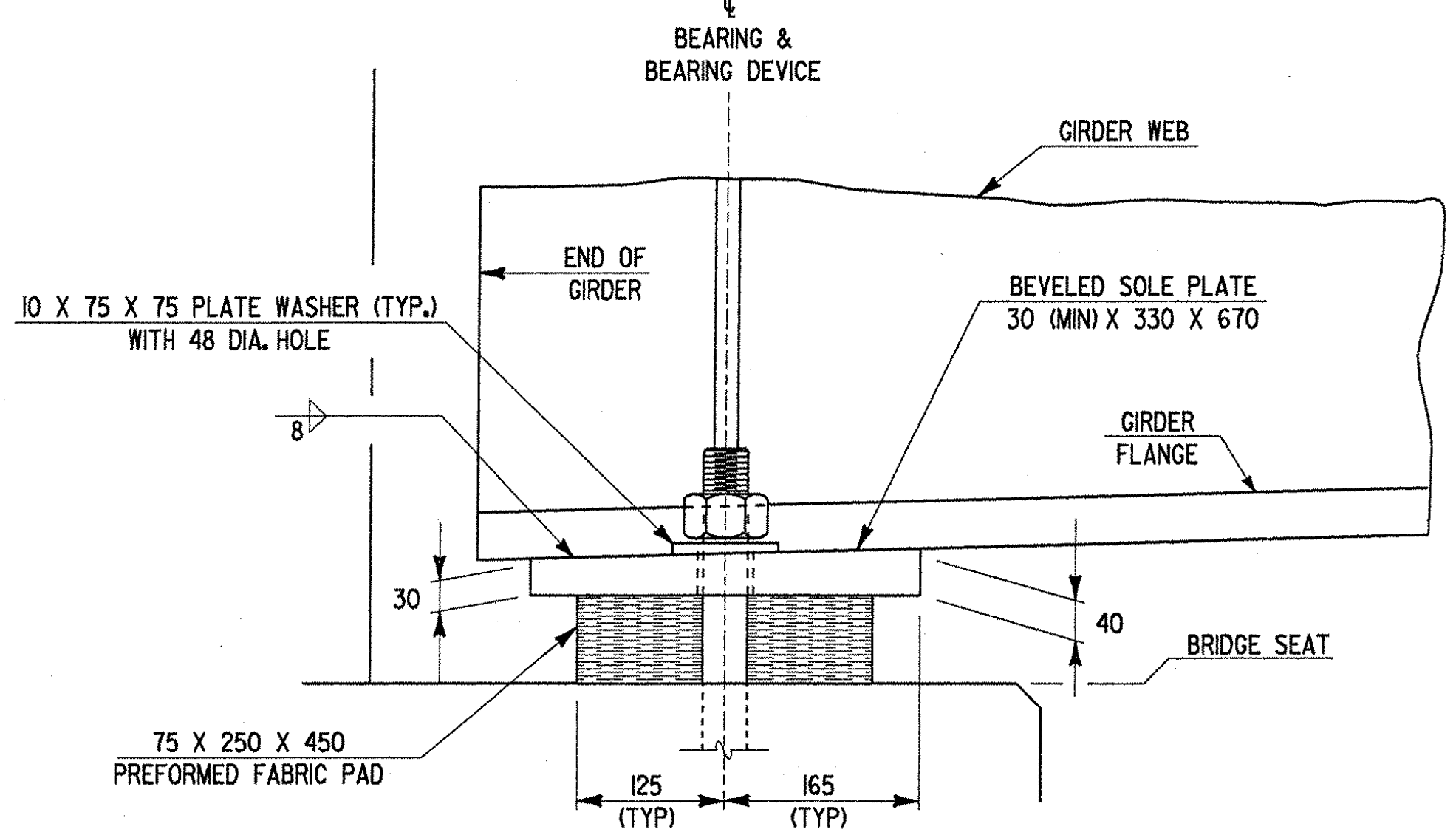
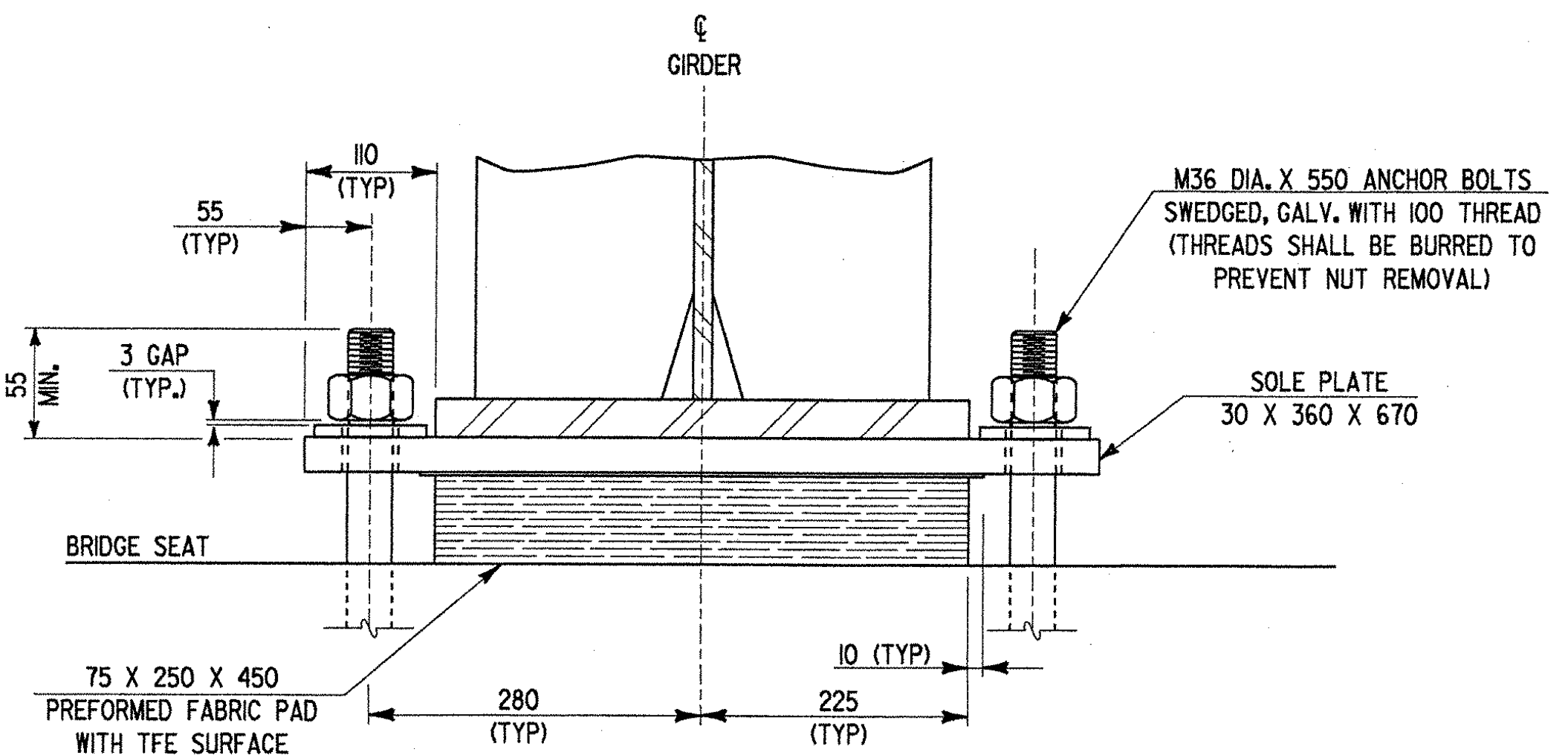
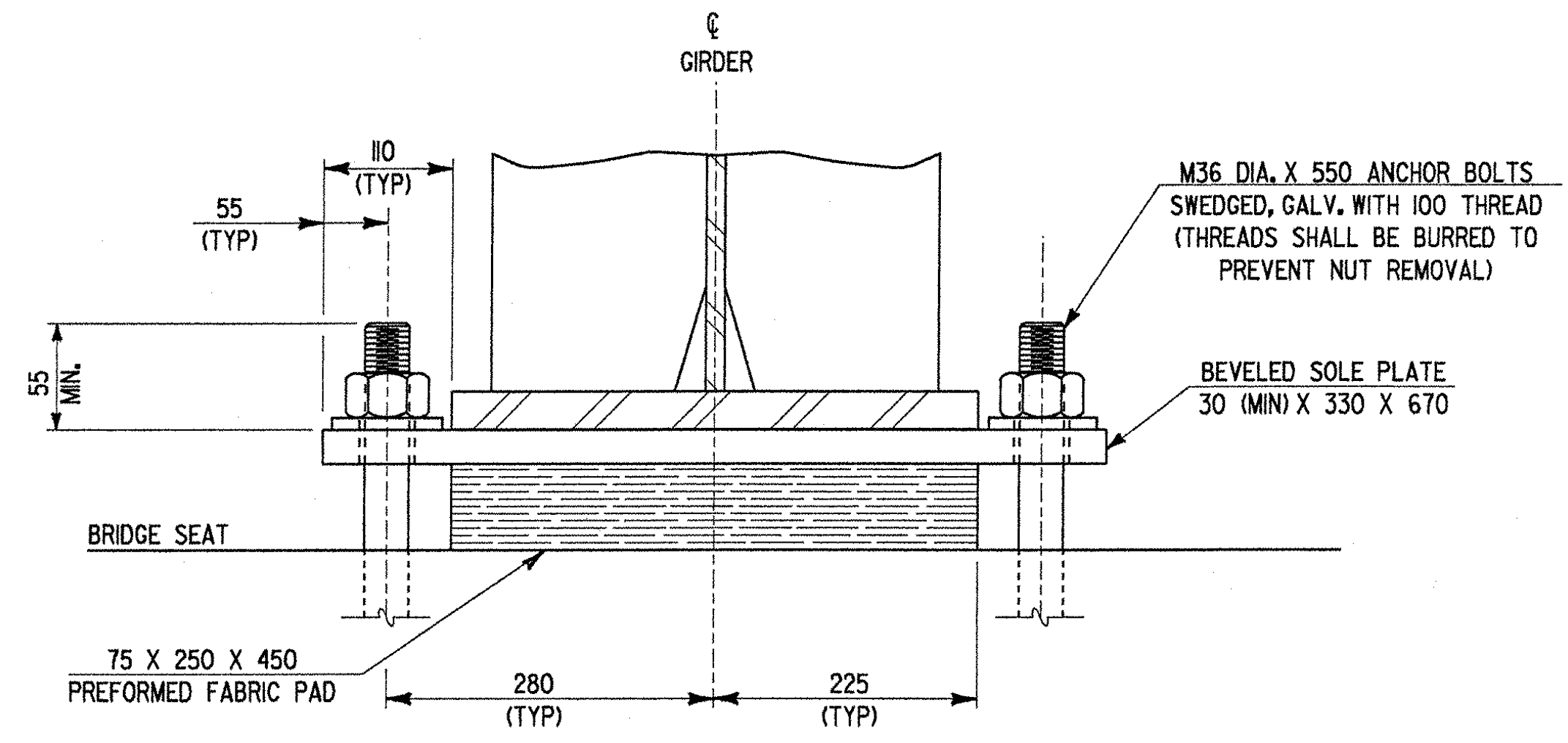


PLAN VIEW



SIDE ELEVATION



FRONT VIEW

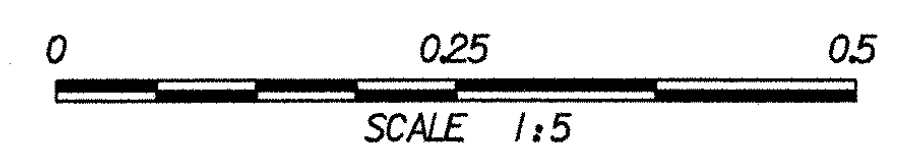
BEARING NOTES

- BEARINGS SHALL CONFORM TO APPLICABLE SUBSECTIONS OF SECTIONS 531 AND 731 OF THE VERMONT STATE SPECIFICATIONS DATED 1995.
- BEARINGS SHALL BE PAID FOR UNDER THE ITEM 531.00 'BEARING DEVICE ASSEMBLY'.
- SHOP DRAWINGS CONFORMING TO SUBSECTION 531.03 SHALL BE SUBMITTED TO INCLUDE WELDING AND BONDING PROCEDURES.
- THE CONCRETE SURFACE UNDER THE BEARING DEVICE SHALL BE LEVEL.
- ALL BEARING DEVICES SHALL BE GALVANIZED OR METALIZED AS PER SUBSECTION 531.04(B) AND 506.15(A) & (B). METALIZED SURFACES ARE TO BE COATED WITH AN APPROVED SEALANT PER 531.04 (C). AREAS OF DAMAGED METALLIZING OR GALVANIZING SHOULD BE REPAIRED PER SUPPLEMENTAL SPECIFICATION 513.
- ALTERNATE CONFIGURATIONS FOR BEARINGS MAY BE SUBMITTED FOR APPROVAL. ANY ALTERNATE SUBMITTED SHALL BE DESIGNED AND CERTIFIED TO MEET THE DESIGN LOADS AND CRITERIA SHOWN ON THIS SHEET, AND SHALL MAINTAIN THE ANCHORAGE SYSTEM SHOWN.
- BRIDGE SEAT ELEVATIONS MAY BE REVISED TO ACCOMMODATE AN ALTERNATE CONFIGURATION.
- THE 'A' DISTANCE IS THE FINAL SETTING FOR THE BEARING PAD AFTER THE CONCRETE SLAB, CURB, PAVEMENT AND BRIDGE RAIL ARE PLACED. 'B' DISTANCE IS LISTED FOR SETTING THE BEARING AFTER THE STRUCTURAL STEEL IS ERECTED AND BEFORE THE CONCRETE DECK IS POURED. THE DIFFERENCE IS THE THEORETICAL ELONGATION OF THE BOTTOM FLANGE DUE TO DEAD LOAD DEFLECTION. THE FINAL 'A' DISTANCE AS SHOWN IN THE TABLE, MUST BE ATTAINED WITHIN 3 MM.
- DESIGN CRITERIA:
 - BASE PLATE TO CONCRETE DESIGN PRESSURE = 6.895 MPa MAXIMUM.
 - MINIMUM ALLOWABLE DESIGN ROTATION = 0.015 RADIAN.
 - HORIZONTAL CAPACITY SHALL BE A MINIMUM 10% OF VERTICAL LOAD.
 - DESIGN LOAD PER BEARING = 776 kN.
- ALL THE ANCHOR BOLTS, NUTS AND WASHERS SHALL BE GALVANIZED AND CONFORM TO THE REQUIREMENTS OF SECTION 714.08. ANCHOR BOLTS SHALL HAVE A MINIMUM OF 400 EMBEDMENT INTO THE CONCRETE. ALL WASHERS SHALL BE 10 PLATE (MINIMUM). PAYMENT FOR ANCHOR BOLTS, NUTS AND WASHERS SHALL BE INCLUDED IN THE UNIT BID PRICE FOR 'BEARING DEVICE ASSEMBLY'.
- ALL STEEL IN BEARING DEVICES (EXCEPT STAINLESS), SHALL BE AASHTO M 270M GRADE 345, EXCEPT ANCHOR BOLTS WHICH SHALL CONFORM TO THE REQUIREMENTS OF AASHTO M 183M.

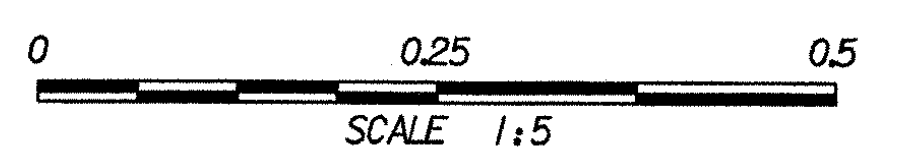
BEARING TEMPERATURE TABLES

ABUTMENT NO 2		
TEMP	'A' DIST	'B' DIST
0°F	42	10
15°F	46	15
30°F	51	19
45°F	55	23
60°F	59	28
75°F	64	32
90°F	68	36
105°F	72	40

FIXED BEARING DETAIL AT ABUTMENT NO 1



EXPANSION BEARING DETAIL AT ABUTMENT NO 2



STATE OF VERMONT
AGENCY OF TRANSPORTATION

Town Of	BERKSHIRE	Bridge No.	26
Highway No.	VT. ROUTE 118	Log Sta.	
VT. ROUTE 118 OVER TROUT RIVER			
BEARING DETAILS			
Designed By	S. JOHNSON	Drawn By	S. DELIA
Checked By	S. JOHNSON	Date	02/00
		Bridge Design Supervisor	
PROJECT	BERKSHIRE	PROJECT NO.	BRF-RS 0283(7)
I.G.C. Info. ys\914562\z184bd.dgn		IPARMz184bd.j	
Bridge Sheet No.	BR16	Sheet	55 of 140