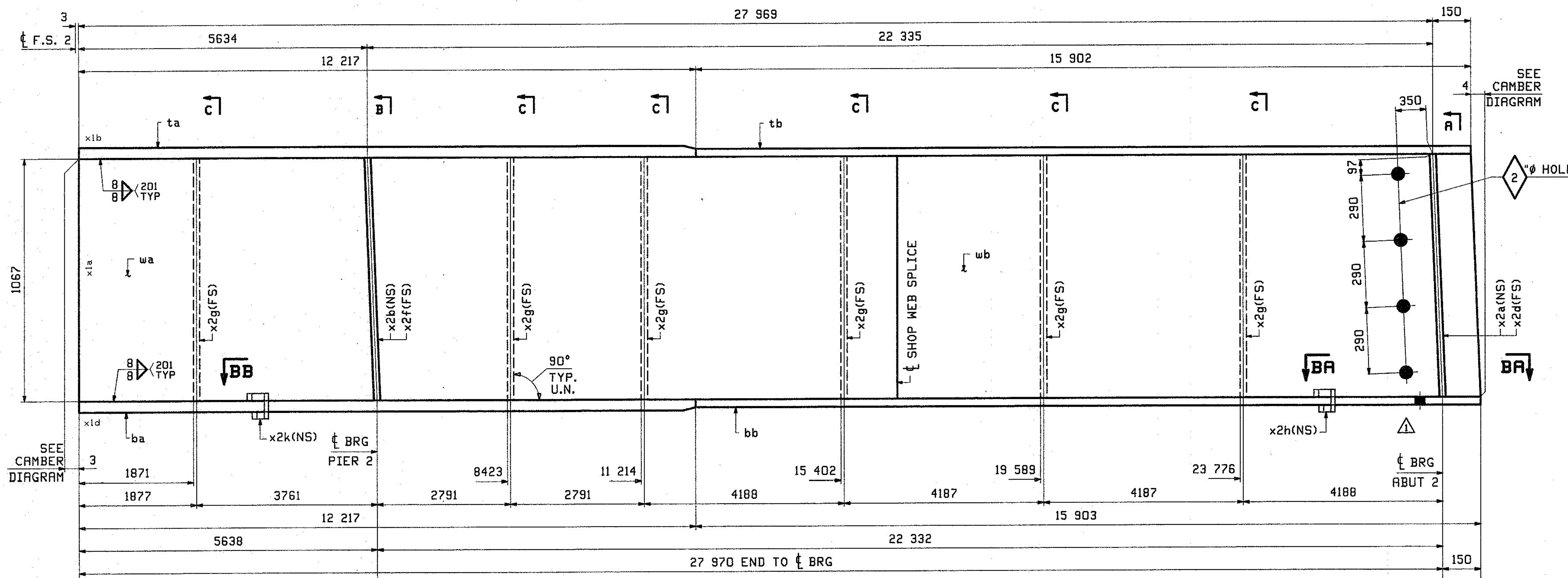


RBH INFO		SHIP	BILL OF MATERIAL			JOB NO.	DRAWING NO.	REV.	
		12G4C				524	12	1	
PAGE	LINE	MARK	QTY	MARK	MATERIAL	LENGTH	REMARKS	WT	PROCUREMENT NOTES
					GIRDER			7372 kg 16527 lb	
3	S		1	wa	PL 13x1067	18 150	M270M-345WT2	1876 kg 4157 lb	
3	Q		1	wb	PL 13x1067	9 978	M270M-345WT2	1086 kg 2385 lb	
2	Q		1	ta	PL 22x406	12 217	M270M-345WT2	857 kg 1889 lb	
2	N		1	tb	PL 22x406	15 902	M270M-345WT2	1115 kg 2459 lb	
1	N		1	ba	PL 25x406	12 217	M270M-345WT2	973 kg 2146 lb	
2	N		1	bb	PL 22x406	15 903	M270M-345WT2	1115 kg 2459 lb	
5	B		1	x2a	PL 22x178	1 067	MIE M270M-345WT2	39 kg 87 lb	
5	B		1	x2b	PL 22x178	1 067	MIE M270M-345WT2	39 kg 87 lb	
5	B		1	x2d	PL 22x178	1 067	MIE M270M-345WT2	39 kg 87 lb	
5	B		1	x2f	PL 22x178	1 067	MIE M270M-345WT2	39 kg 87 lb	
5	C		6	x2g	PL 13x178	1 067	MIE M270M-345WT2	18 kg 43 lb	
5	D		1	x2h	PL 6x72	0 285		4.5 kg 10 lb	
5	D		1	x2k	PL 6x75	0 285		4.5 kg 10 lb	



FOR FIELD SPLICE DETAIL SEE XIM3 ON SHT XI

SEE CAMBER DIAGRAM

SEE CAMBER DIAGRAM

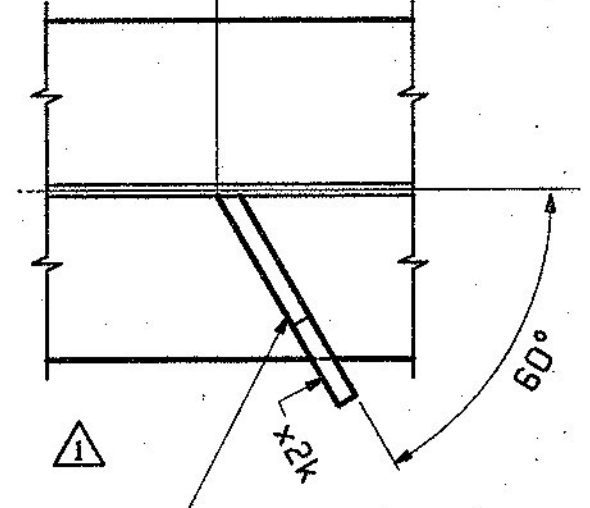
2 HOLES

x2a(NS)
x2d(FS)

ONE - GIRDER - 12G4C

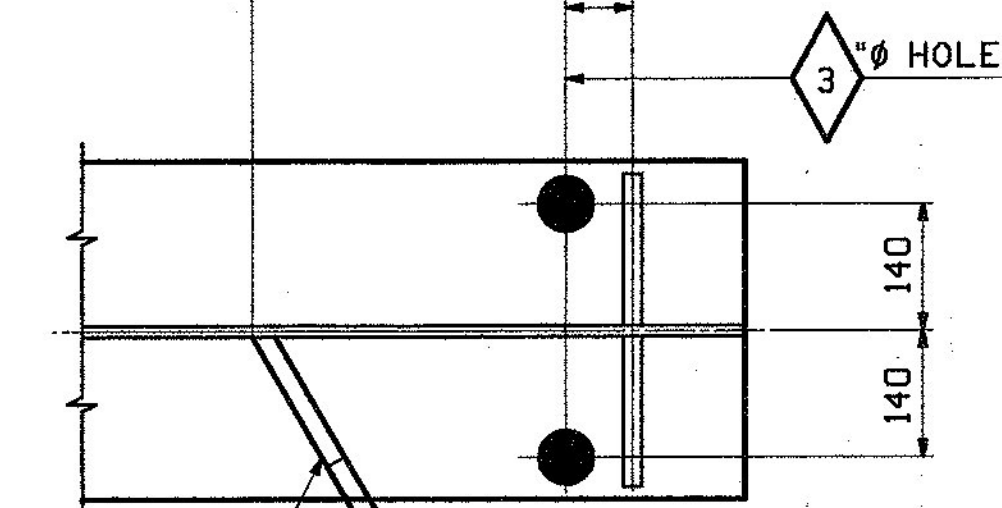
FOR GIRDER STANDARD DETAILS SEE DRAWING X2.
 FOR FIELD SPLICE DETAIL SEE DRAWING XI.
 FOR WEB CUTTING DIAGRAM SEE DRAWING C2.
 FOR FLANGE DIAGRAM SEE DRAWING F2.
 FOR GENERAL NOTES SEE DRAWING GNI.
 FOR TYPICAL WELD TERMINATION DETAILS SEE DRAWING GNI.
 ALL STIFFENERS ARE NORMAL TO WEB.
 "T2" DENOTES MATERIAL SUBJECT TO CHARPY V-NOTCH TESTING.

TIGHT FIT TO FLG WITH SEAL WELD ALL AROUND (TYP) 401

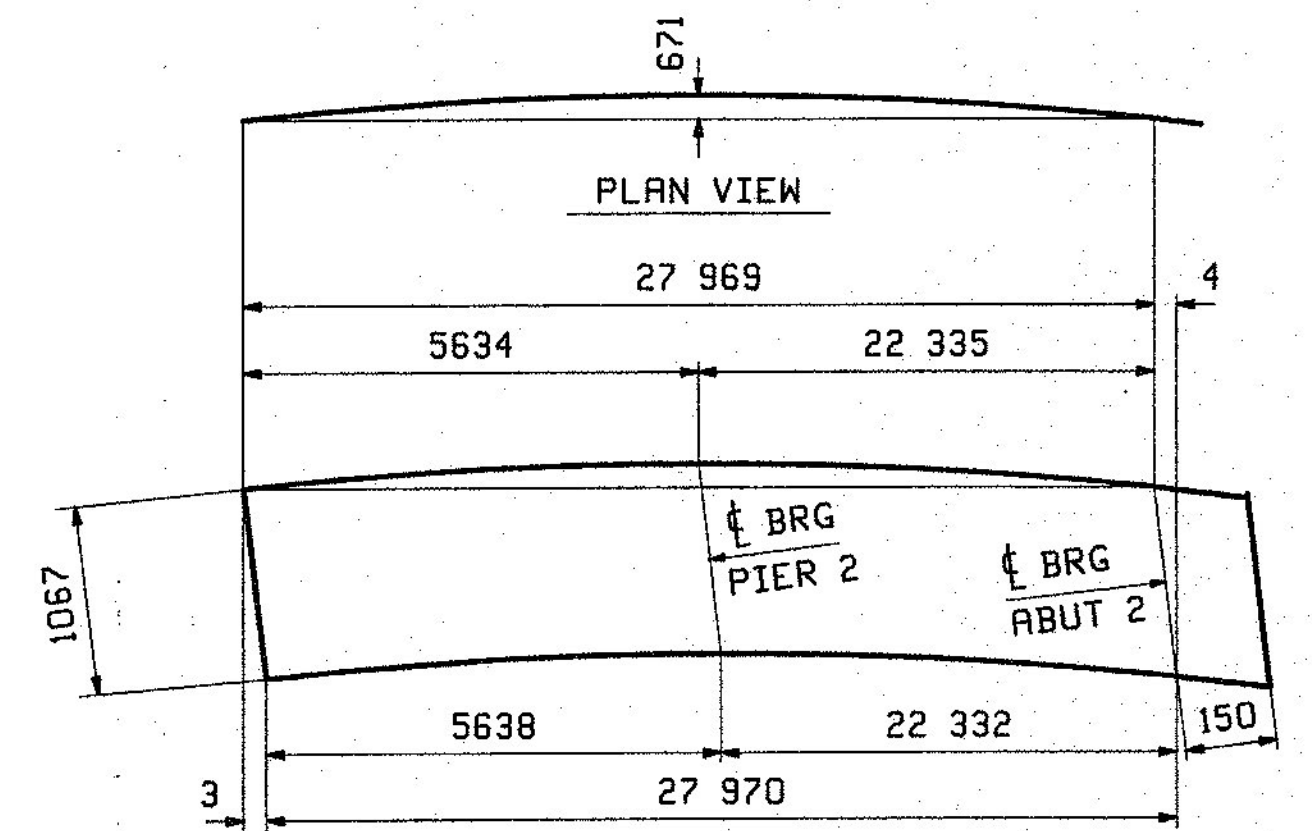


SECTION BB

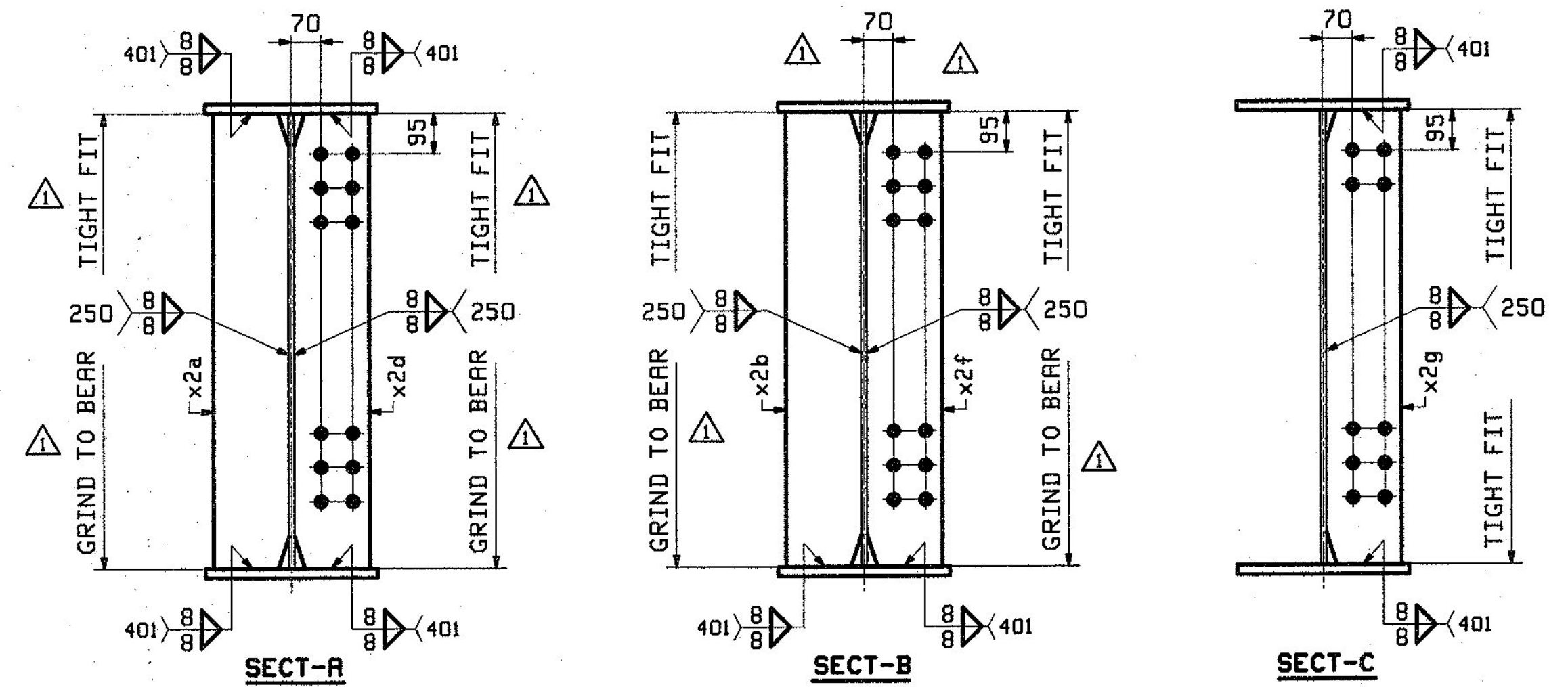
TIGHT FIT TO FLG WITH SEAL WELD ALL AROUND (TYP) 401



SECTION BA-BA



DEV. ORIENTATION DIAGRAM



SECT-A

SECT-B

SECT-C

12/18	APPROVAL COMMENTS	CRK	PCP	12/19/12		
0						
REV.	DATE	REMARKS	DWN	CHK	APVL	SHOP
MATERIAL:		SURFACE PREP. & PAINT:		HOLES:		SHOP BOLTS:
M270M-345W UN		SEE GNI		15 16 Ø UN		NONE
DESCRIPTION: GIRDER 12G4C						
CASCO BAY STEEL STRUCTURES, INC.						
1 WALLACE AVE.			PHONE (207) 780-6722			
SOUTH PORTLAND, ME 04106			FAX. (207) 780-6726			
STRUCTURE: VT ROUTE 108, BRIDGE #21				DRAWN:	DATE:	
MAJOR COLLECTOR				CRK	10/09	
TOWN OF CAMBRIDGE				CHKD:	DATE:	
COUNTY OF LAMOILLE, VERMONT				PCP	10/16	
LOCATION: CAMBRIDGE, VERMONT				JOB NO.	DMG NO.	
PROJ NO. BRF 027-1(4)				524	12	
CUSTOMER: A. L. ST. ONGE CONTRACTING					REV. 1	

PCP, Inc. Doc. No. 2012 10/16/12 Rev. 1