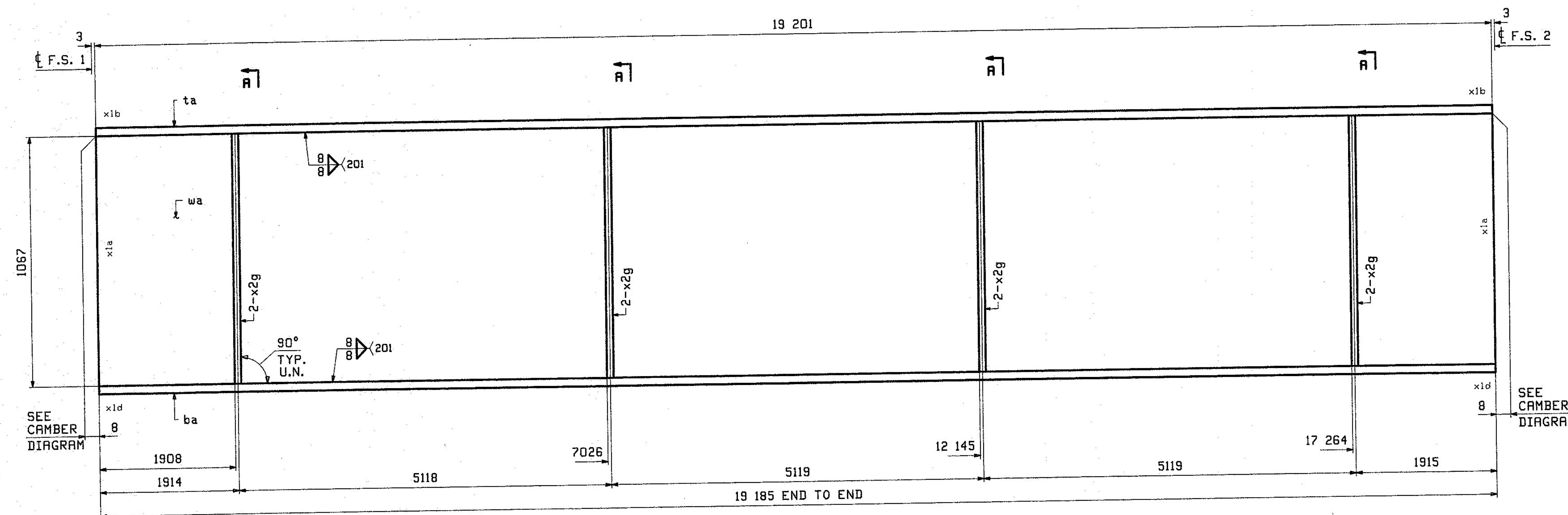


ABM INFO		SHIP		BILL OF MATERIAL				JOB NO.	DRAWING NO.	REV.
								524	7	
PAGE	LINE	MARK	QTY	MARK	MATERIAL	LENGTH		REMARKS	WT	PROCUREMENT NOTES
						a	ab			
		7G3B	1		GIRDER				4937 kg 10884 lb	
2	W		1	wa	PL 13x1067	19	201	M270M-345HT2	2091 kg 4593 lb	
1	U		1	ta	PL 22x406	19	201	M270M-345HT2	1346 kg 2966 lb	
1	U		1	ba	PL 22x406	19	185	M270M-345HT2	1345 kg 2965 lb	
5	C		8	x2g	PL 13x178	1	067	M270M-345HT2	18 kg 43 lb	



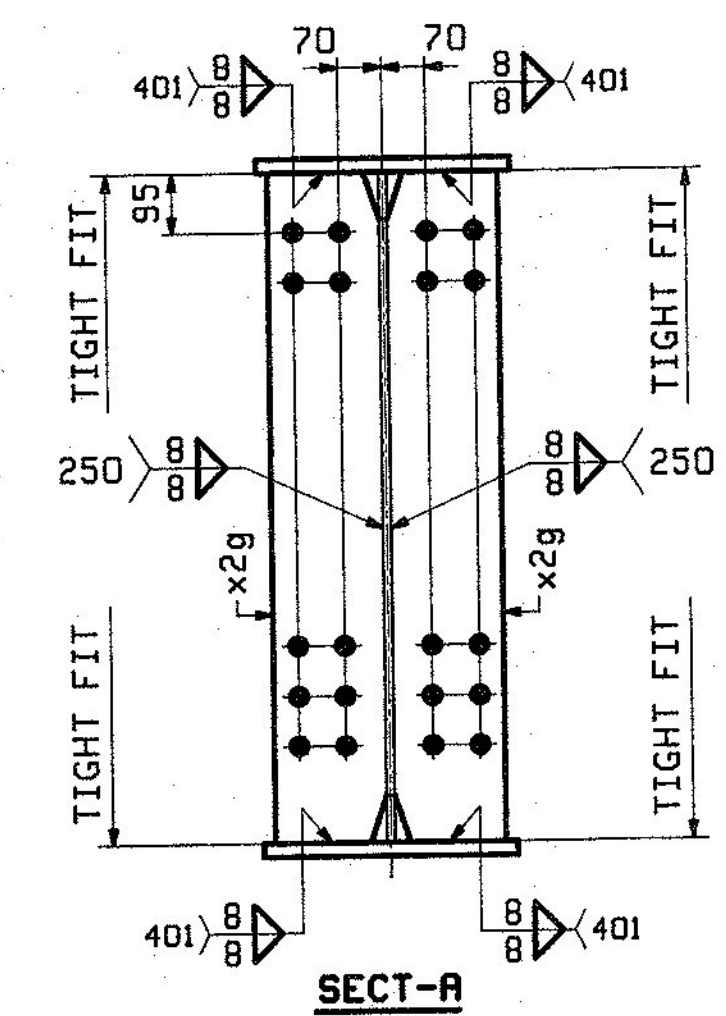
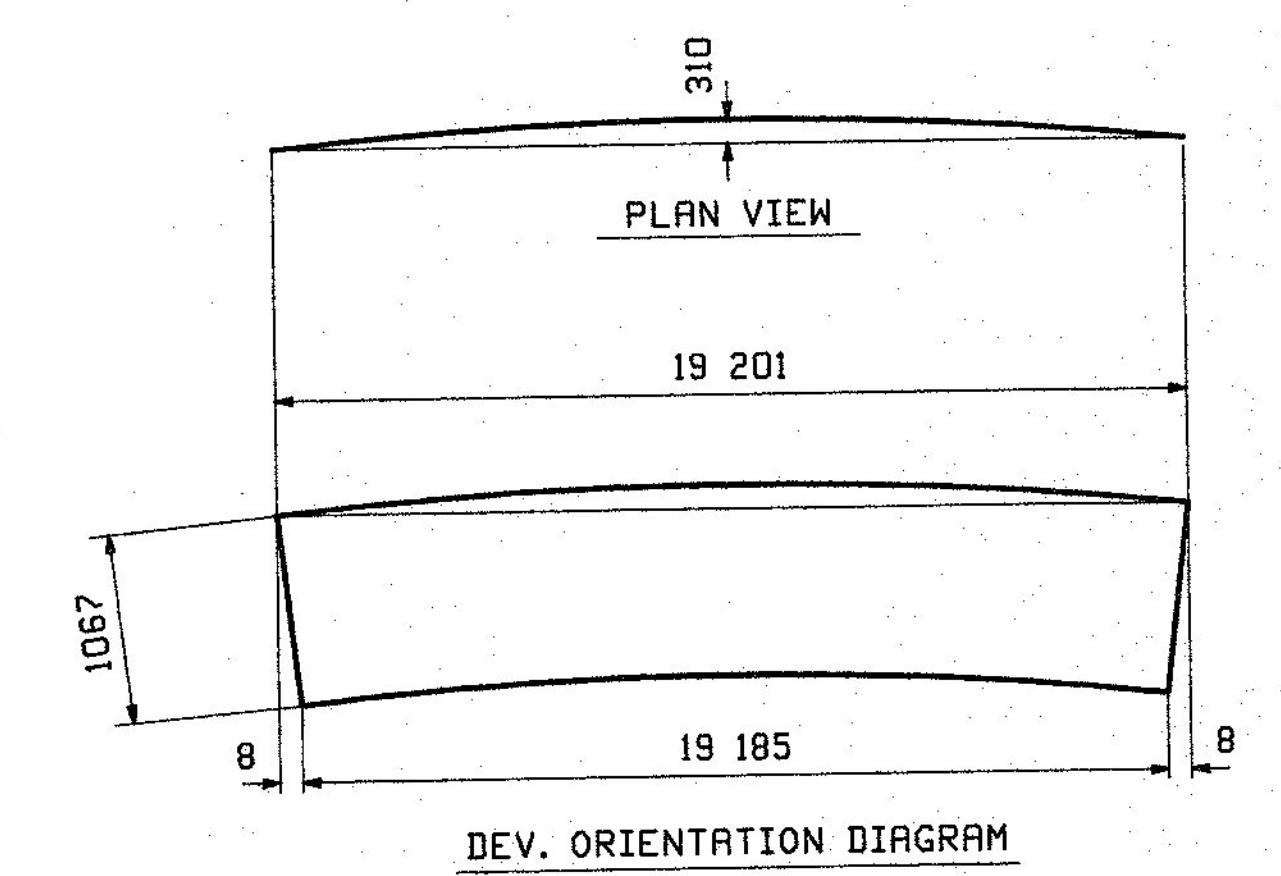
FOR FIELD SPLICE DETAIL  
SEE XIM2 ON SHT X1

FOR FIELD SPLICE DETAIL  
SEE XIM2 ON SHT X1

SEE CAMBER  
DIAGRAM

**ONE - GIRDER - 7G3B**

FOR GIRDER STANDARD DETAILS SEE DRAWING X2.  
 FOR FIELD SPLICE DETAIL SEE DRAWING X1.  
 FOR WEB CUTTING DIAGRAM SEE DRAWING C1.  
 FOR FLANGE DIAGRAM SEE DRAWING F1.  
 FOR GENERAL NOTES SEE DRAWING GNI.  
 FOR TYPICAL WELD TERMINATION DETAILS SEE DRAWING GNI.  
 ALL STIFFENERS ARE NORMAL TO WEB.  
 "T2" DENOTES MATERIAL SUBJECT TO CHARPY V-NOTCH TESTING.



REV.	DATE	REMARKS	DWN	CHK	APVL	SHOP
0						10/22/12
MATERIAL:		SURFACE PREP. & PAINT:		HOLES:		SHOP BOLTS:
M270M-345W UN		SEE GNI		15. 16 φ		NONE
DESCRIPTION: GIRDER 7G3B						
CASCO BAY STEEL STRUCTURES, INC. 1 WALLACE AVE. PHONE (207) 780-6722 SOUTH PORTLAND, ME 04106 FAX. (207) 780-6726						
STRUCTURE: VT ROUTE 108, BRIDGE #21 MAJOR COLLECTOR TOWN OF CAMBRIDGE COUNTY OF LAMOILLE, VERMONT			DRAWN: CRK CHKD: PCP		DATE: 10/09 10/16	
LOCATION: CAMBRIDGE, VERMONT			JOB NO. 524		DWG NO. 7	
PROJ NO. BRF 027-1(4)			DATE: 11/27/12		REV. 7	
CUSTOMER: A. L. ST. ONGE CONTRACTING						

PCP 11/27/12 10:13 AM 2012 08/01/12 11:57 AM