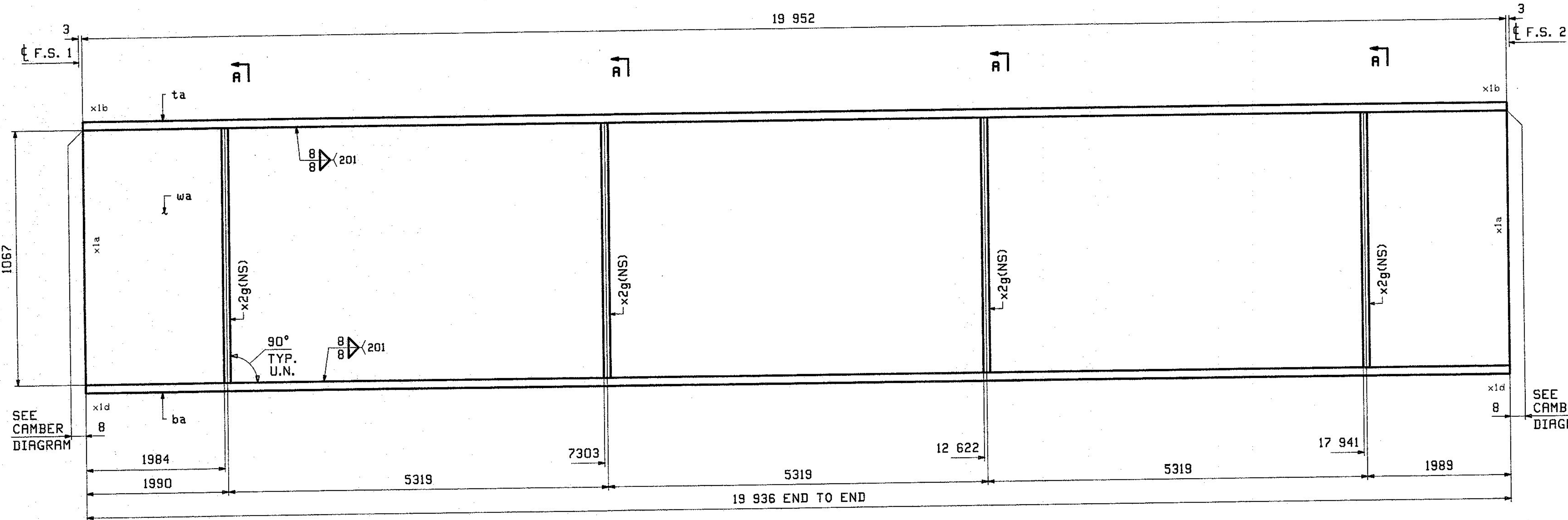


BILL OF MATERIAL					JOB NO.	DRAWING NO.	REV.		
					524	5			
PAGE	LINE	MARK	QTY	MARK	MATERIAL	LENGTH	REMARKS	WT	PROCUREMENT NOTES
						m			
		5G1B	1		GIRDER			9047 kg 1126 lbs	
2	S		1	wa	PL 13x1067	19 952	M270M-345HT2	2173 kg 4780 lbs	
1	Q		1	za	PL 22x406	19 952	M270M-345HT2	1399 kg 3084 lbs	
1	Q		1	ba	PL 22x406	19 936	M270M-345HT2	1399 kg 3082 lbs	
5	C		4	x2g	PL 13x178	1 067	M270M-345HT2	19 kg 43 lbs	



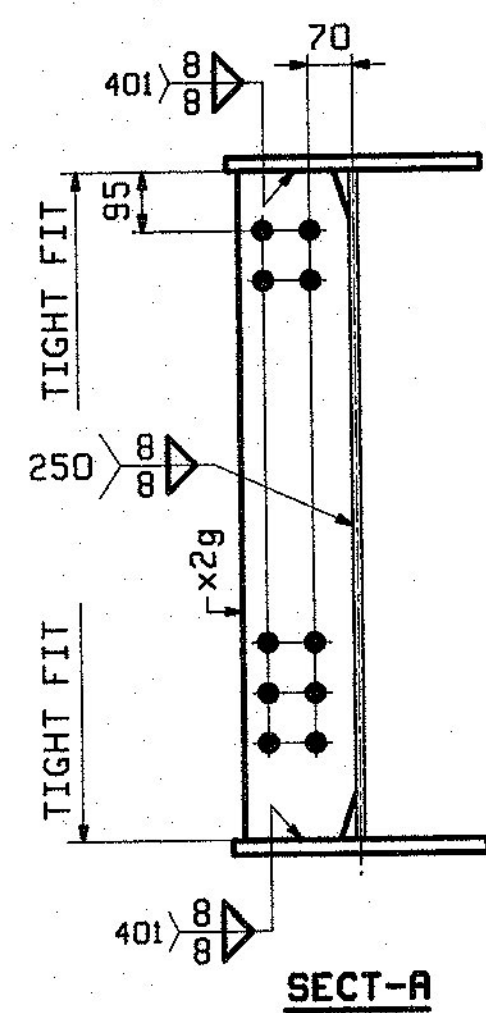
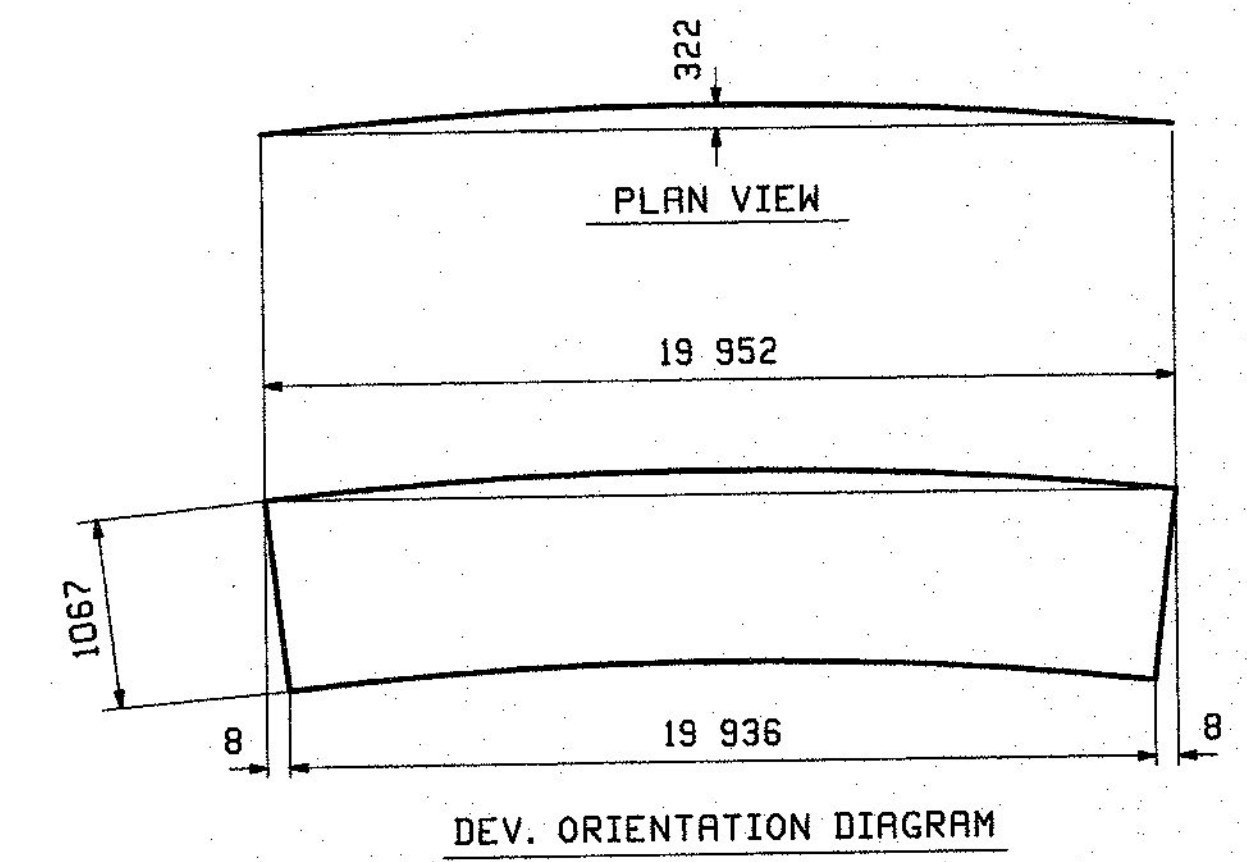
ONE - GIRDER - 5G1B

FOR GIRDER STANDARD DETAILS SEE DRAWING X2.
 FOR FIELD SPLICE DETAIL SEE DRAWING X1.
 FOR WEB CUTTING DIAGRAM SEE DRAWING C1.
 FOR FLANGE DIAGRAM SEE DRAWING F1.
 FOR GENERAL NOTES SEE DRAWING G1.
 FOR TYPICAL WELD TERMINATION DETAILS SEE DRAWING G1.
 ALL STIFFENERS ARE NORMAL TO WEB.
 T2 DENOTES MATERIAL SUBJECT TO CHARPY V-NOTCH TESTING.

FOR FIELD SPLICE DETAIL
SEE X1M2 ON SHT X1

SEE CAMBER
DIAGRAM

SEE CAMBER
DIAGRAM



REV.	DATE	REMARKS	DWN	CHK	APVL	SHOP
0						10/22/12
MATERIAL:		SURFACE PREP. & PAINT:		HOLES:		SHOP BOLTS:
M270M-345W UN		SEE G1		19 16		NONE
DESCRIPTION: GIRDER 5G1B						
CASCO BAY STEEL STRUCTURES, INC. 1 WALLACE AVE. PHONE (207) 780-6722 SOUTH PORTLAND, ME 04106 FAX. (207) 780-6726						
STRUCTURE: VT ROUTE 108, BRIDGE #21 MAJOR COLLECTOR TOWN OF CAMBRIDGE COUNTY OF LAMOILLE, VERMONT				DRAWN:	DATE:	
				CRK	10/08	
				CHKD:	DATE:	
				PCP	10/16	
LOCATION: CAMBRIDGE, VERMONT			JOB NO.		DNG NO.	
PROJ NO. BRF 027-1(4)			524		5	
CUSTOMER: A. L. ST. ONGE CONTRACTING					REV. Δ	

APPROVED BY: [Signature] DATE: 11/27/12

PCP: 1/28/12 10:20 AM 11/27/12