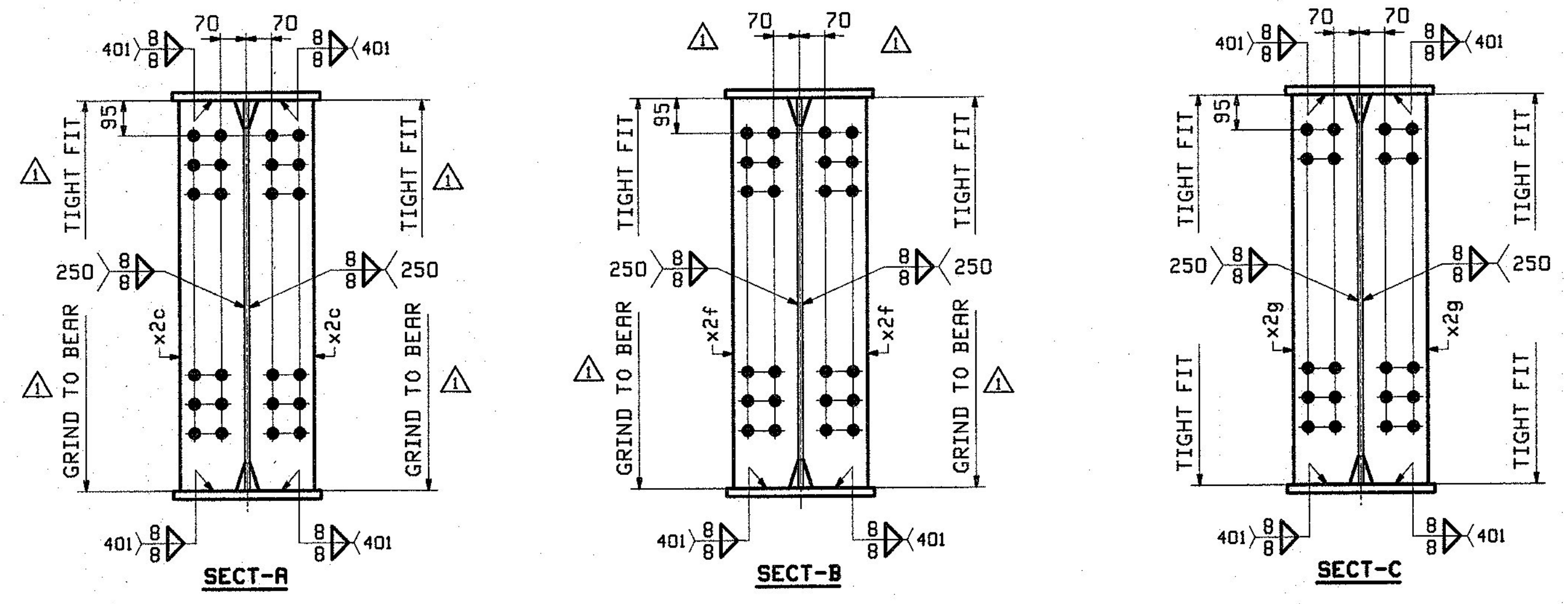


ONE - GIRDER - 3G3A

FOR GIRDER STANDARD DETAILS SEE DRAWING X2.
 FOR FIELD SPlice DETAIL SEE DRAWING XI.
 FOR WEB CUTTING DIAGRAM SEE DRAWING CI.
 FOR FLANGE DIAGRAM SEE DRAWING FI.
 FOR GENERAL NOTES SEE DRAWING GNI.
 FOR TYPICAL WELD TERMINATION DETAILS SEE DRAWING GNI.
 ALL STIFFENERS ARE NORMAL TO WEB.
 "T2" DENOTES MATERIAL SUBJECT TO CHARPY V-NOTCH TESTING.

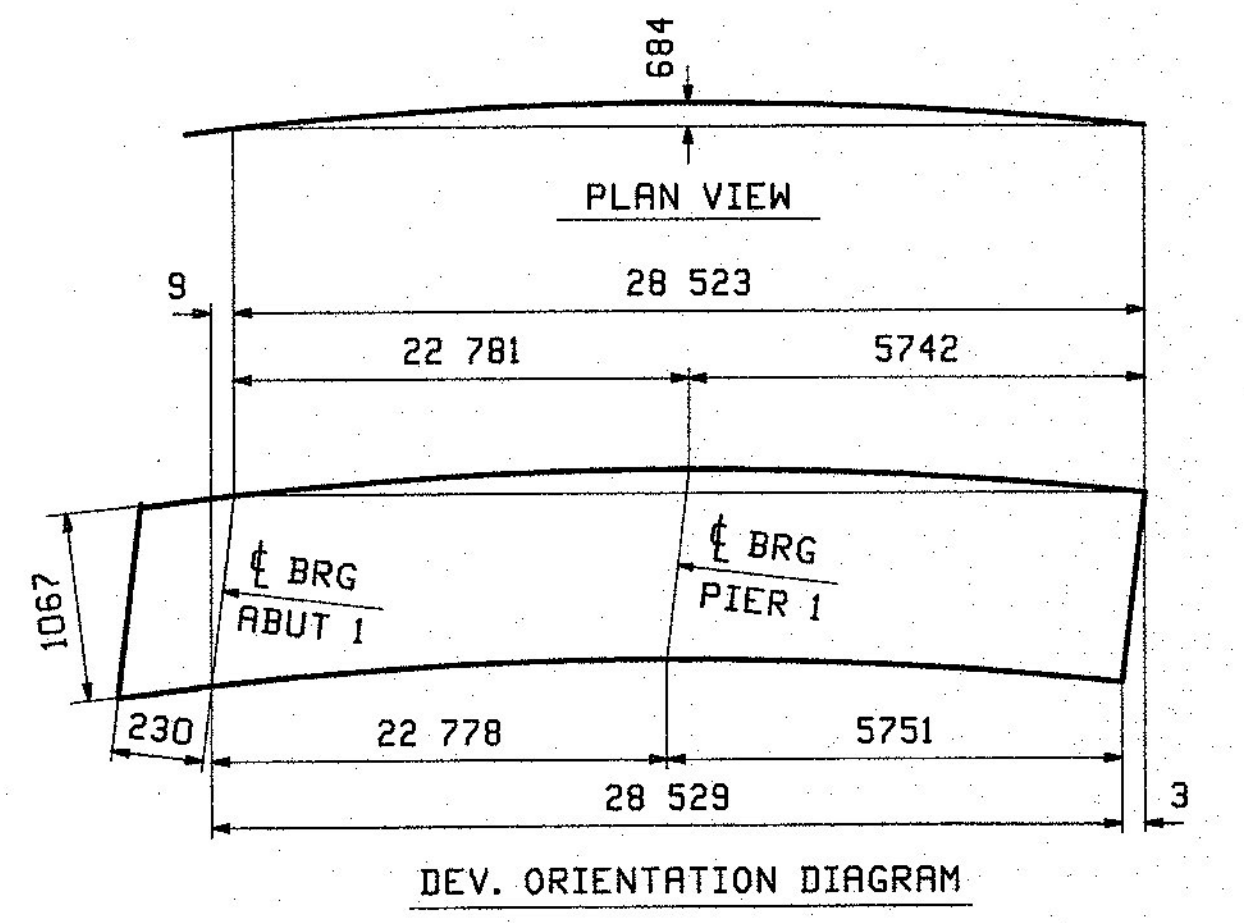
NOTE "A"
 BEARING AREA TO RECEIVE FIELD WELDED SOLE PLATE.
 PRIMER ONLY BTM & EDGES OF BTM FLG.



BILL OF MATERIAL		JOB NO.	DRAWING NO.	REV.					
		524	3	△					
PAGE	LINE	MARK	QTY	MARK	MATERIAL	LENGTH	REMARKS	WT	PROCUREMENT NOTES
		3G3A	1		GIRDER				
3	J	1	wa		PL 13x1067	10 617	M270M-345MT2	1156 kg	
3	S	1	wb		PL 13x1067	18 150	M270M-345MT2	1976 kg	
2	G	1	ta		PL 22x406	16 284	M270M-345MT2	1142 kg	
1	L	1	tb		PL 25x406	12 469	M270M-345MT2	894 kg	
2	G	1	ba		PL 22x406	16 291	M270M-345MT2	1142 kg	
1	E	1	bb		PL 38x406	12 468	M270M-345MT2	1510 kg	
5	B	2	x2c		PL 22x178	1 067	MIE M270M-345MT2	33 kg	
5	B	2	x2f		PL 22x178	1 067	MIE M270M-345MT2	33 kg	
5	C	12	x2g		PL 13x178	1 067	M270M-345MT2	18 kg	

FOR FIELD SPlice DETAIL SEE XIM2 ON SHT XI

SEE CAMBER DIAGRAM



△	12/18	APPROVAL COMMENTS	CRK	PCP	12/19/12	
0						
REV.	DATE	REMARKS	DWN	CHK	APVL	SHOP
MATERIAL:		SURFACE PREP. & PAINT:		HOLES:		SHOP BOLTS:
M270M-345W UN		SEE GNI		15 16" Ø		NONE
DESCRIPTION: GIRDER 3G3A						
CASCO BAY STEEL STRUCTURES, INC. 1 WALLACE AVE. PHONE (207) 780-6722 SOUTH PORTLAND, ME 04106 FAX. (207) 780-6726						
STRUCTURE: VT ROUTE 108, BRIDGE #21 MAJOR COLLECTOR TOWN OF CAMBRIDGE COUNTY OF LAMOILLE, VERMONT					DRAWN:	DATE:
					CRK	10/08
					CHKD:	DATE:
					PCP	10/16
LOCATION: CAMBRIDGE, VERMONT					JOB NO.	DWG NO.
PROJ NO. BRF 027-1(4)					524	3
CUSTOMER: A. L. ST. ONGE CONTRACTING						REV. △

DEC 23 2012
 APPROVED BY: [Signature] DATE: 12/18/12