

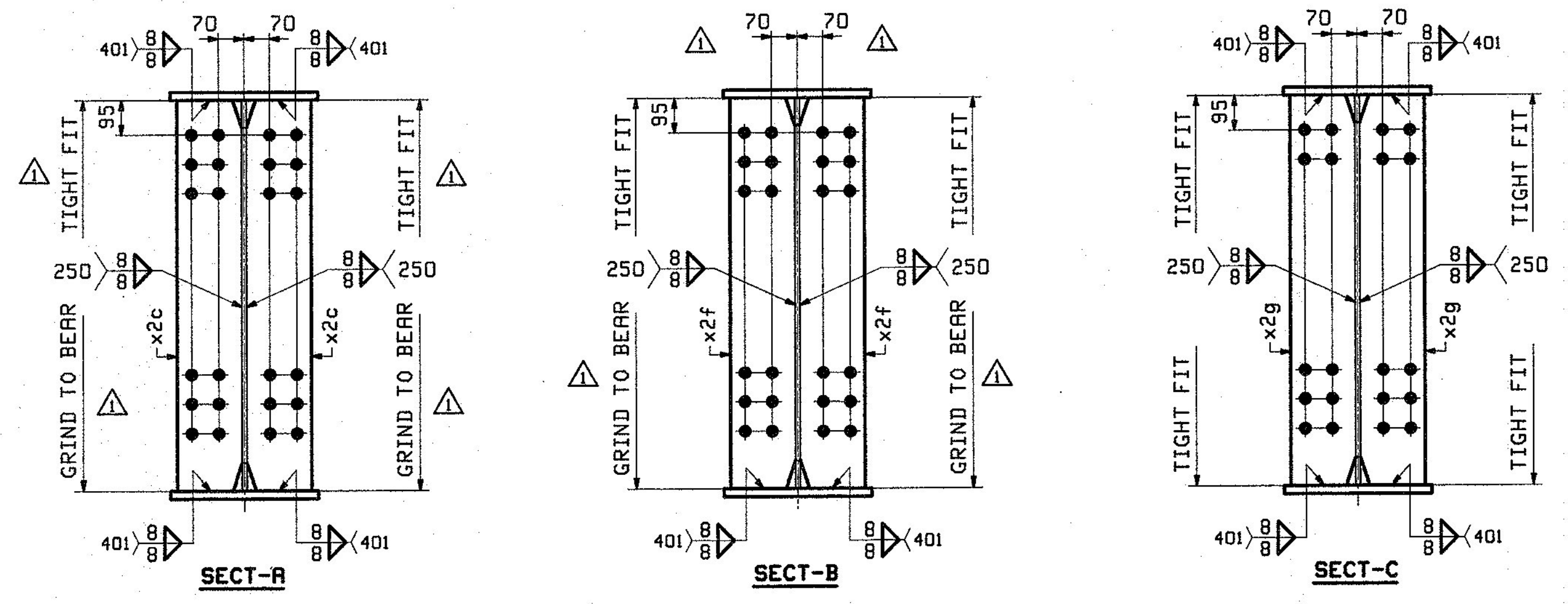
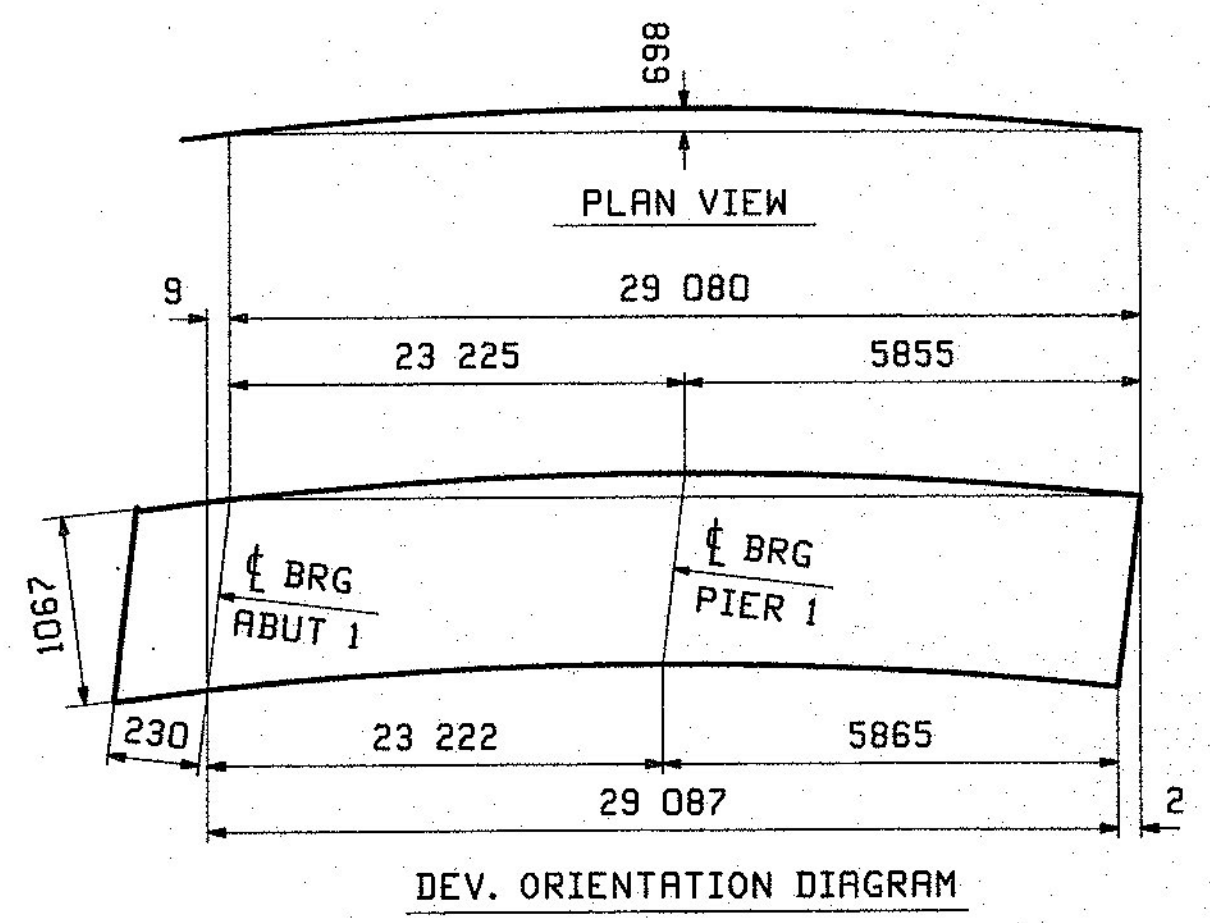
**ONE - GIRDER - 2G2A**

FOR GIRDER STANDARD DETAILS SEE DRAWING X2.  
 FOR FIELD SPLICE DETAIL SEE DRAWING X1.  
 FOR WEB CUTTING DIAGRAM SEE DRAWING C1.  
 FOR FLANGE DIAGRAM SEE DRAWING F1.  
 FOR GENERAL NOTES SEE DRAWING GNI.  
 FOR TYPICAL WELD TERMINATION DETAILS SEE DRAWING GNI.  
 ALL STIFFENERS ARE NORMAL TO WEB.  
 "T2" DENOTES MATERIAL SUBJECT TO CHARPY V-NOTCH TESTING.

NOTE "A"  
 BEARING AREA TO RECEIVE FIELD WELDED SOLE PLATE.  
 PRIMER ONLY BTM & EDGES OF BTM FLG.

RBH INFO		SHIP	BILL OF MATERIAL				JOB NO.	DRAWING NO.	REV.
							524	2	△
PAGE	LINE	MARK	QTY	MARK	MATERIAL	LENGTH	REMARKS	WT	PROCUREMENT NOTES
						m			
		2G2A	1		GIRDER			6437 kg 8600 lb	
3	E		1	wa	PL 13x1067	11 174	M270M-345HT2	1917 kg 4216 lb	
3	S		1	wb	PL 13x1067	18 151	M270M-345HT2	1976 kg 4367 lb	
2	C		1	ta	PL 22x406	16 608	M270M-345HT2	164 kg 362 lb	
1	J		1	tb	PL 25x406	12 702	M270M-345HT2	1012 kg 2231 lb	
2	C		1	ba	PL 22x406	16 615	M270M-345HT2	165 kg 363 lb	
1	C		1	bb	PL 38x406	12 702	M270M-345HT2	1538 kg 3391 lb	
5	B		2	x2c	PL 22x178	1 067	M1E M270M-345HT2	33 kg 72 lb	
5	B		2	x2f	PL 22x178	1 067	M1E M270M-345HT2	33 kg 72 lb	
5	C		12	x2g	PL 13x178	1 067	M270M-345HT2	19 kg 43 lb	

FOR FIELD SPLICE DETAIL  
 SEE XIM2 ON SHT XI



DEC 23 2012

APPROVED

DATE: 12/23/12

REV.	DATE	REMARKS	DMN	CHK	APVL	SHOP
△	12/18	APPROVAL COMMENTS	CRK	PCP		12/19/12
0						

MATERIAL: M270M-345W UN SURFACE PREP. & PAINT: SEE GNI HOLES: 15/16" Ø SHOP BOLTS: NONE

DESCRIPTION: GIRDER 2G2A

CASCO BAY STEEL STRUCTURES, INC.  
 1 WALLACE AVE. PHONE (207) 780-6722  
 SOUTH PORTLAND, ME 04106 FAX. (207) 780-6726

STRUCTURE: VT ROUTE 108, BRIDGE #21  
 MAJOR COLLECTOR  
 TOWN OF CAMBRIDGE  
 COUNTY OF LAMOILLE, VERMONT

LOCATION: CAMBRIDGE, VERMONT

PROJ NO. BRF 027-1(4)

CUSTOMER: R. L. ST. ONGE CONTRACTING

DRAWN: CRK DATE: 10/08

CHKD: PCP DATE: 10/16

JOB NO. 524

DWG NO. 2

REV. △