

GENERAL NOTES

NOTE TO ENGINEER:
 THESE NOTES ARE NOT INTENDED TO BE ALL INCLUSIVE AND COMPLIANCE WITH RELEVANT SPECIFICATIONS REMAIN UNCHANGED.

CONSTRUCTION SPECIFICATIONS

- 1) ALL MATERIAL AND WORKMANSHIP TO BE IN ACCORDANCE WITH THE STATE OF VERMONT AGENCY OF TRANSPORTATION STANDARD SPECIFICATIONS FOR CONSTRUCTION DATED 2011 WITH LATEST REVISIONS AND THE AASHTO LRFD BRIDGE CONSTRUCTION SPECIFICATIONS FOR HIGHWAY BRIDGES DATED 2008.

MATERIAL SPECIFICATIONS

- 1) UNLESS OTHERWISE NOTED, ALL STEEL TO BE AASHTO M270M GRADE 345M.
- 2) MATERIAL NOTED "CVN" OR "T2" ON DETAIL DRAWINGS SHALL BE CHARPY V-NOTCH TESTED IN ACCORDANCE WITH THE REQUIREMENTS OF VERMONT STANDARD SPECIFICATIONS SECTION 714.01.
- 3) HIGH STRENGTH BOLTS: ASTM A325 (AASHTO M164) 7/8" DIA., TYPE 3. NUTS SHALL BE A563 (TYPE 3) GRADE C3. IN PAINTED AREAS USE ASTM A325 (AASHTO M164) TYPE 1 GALVANIZED (PER AASHTO M298) BOLTS, NUTS, AND WASHERS.

BOLTS & NUTS SHALL BE ROTATIONAL CAPACITY TESTED. DO NOT MIX NUTS & BOLTS FROM DIFFERENT CONTAINERS UNLESS ALL BOLTS & NUTS HAVE THE SAME LOT NUMBER.

FABRICATION

- 1) ALL HOLES SHALL BE DRILLED FULL SIZE (UN).

WELDING

- 1) THE CONFIGURATION OF THE WELD JOINTS AND ALL WELDING PROCEDURES SHALL BE IN ACCORDANCE WITH AASHTO/AWS D1.5-2010 BRIDGE WELDING CODE AND IN ADDITION TO SPECIFICATIONS SHOWN ABOVE. ALL WELDING WILL BE DETAILED TO PRE-QUALIFIED JOINTS, UNLESS PROHIBITED BY THE DESIGNER.
- 2) WELDING OF MAIN LOAD CARRYING MEMBERS AND ATTACHMENTS SHALL BE PERFORMED USING THE AUTOMATIC SUBMERGED ARC & SHIELDED METAL ARC PROCESSES. ALL WELDS ARE CONTINUOUS U.N.
- 3) NON DESTRUCTIVE TESTING OF WELDS SHALL BE IN ACCORDANCE WITH THE REFERENCED SPECIFICATION.
- 4) SEE DETAIL "WS1" & "WS2" ON THIS DRAWING FOR WELD TERMINATION DETAIL.

FIELD CONNECTIONS

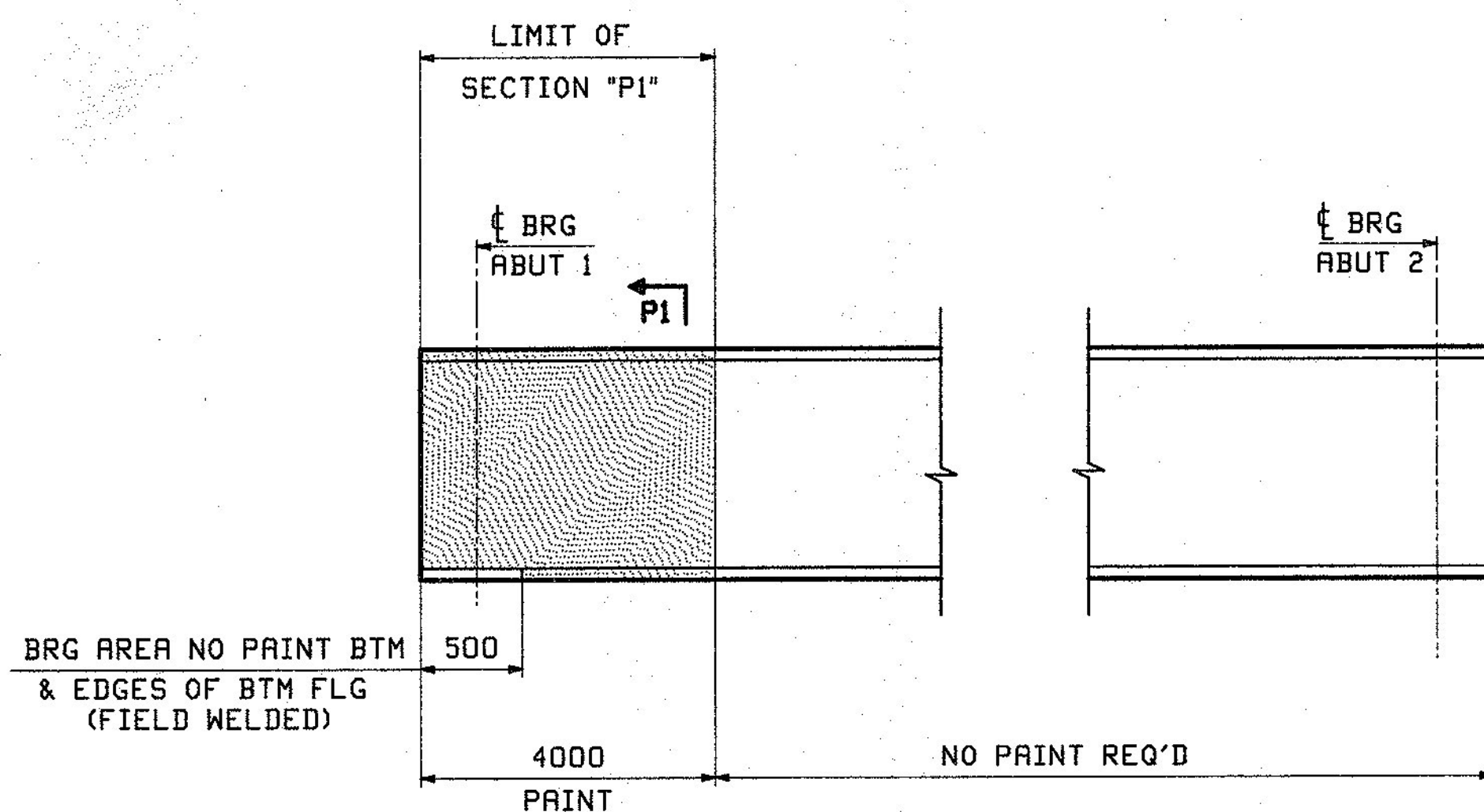
- 1) ALL FIELD CONNECTIONS SHALL BE MADE WITH 7/8" DIAMETER HIGH STRENGTH A-325 BOLTS (UN), INSTALLED PER SECTION 506.19(c). SEE DWG E1 FOR FIELD BOLT SIZES.
- 2) BOLTS SHALL HAVE HEAVY HEX NUT, HEAVY HEX HEAD, AND AT LEAST ONE FLAT WASHER EACH. WASHER TO BE PLACED UNDER TURNED ELEMENT.
- 3) PIECE MARKS WILL BE LOCATED AS SHOWN ON ERECTION DRAWINGS.

CLEANING

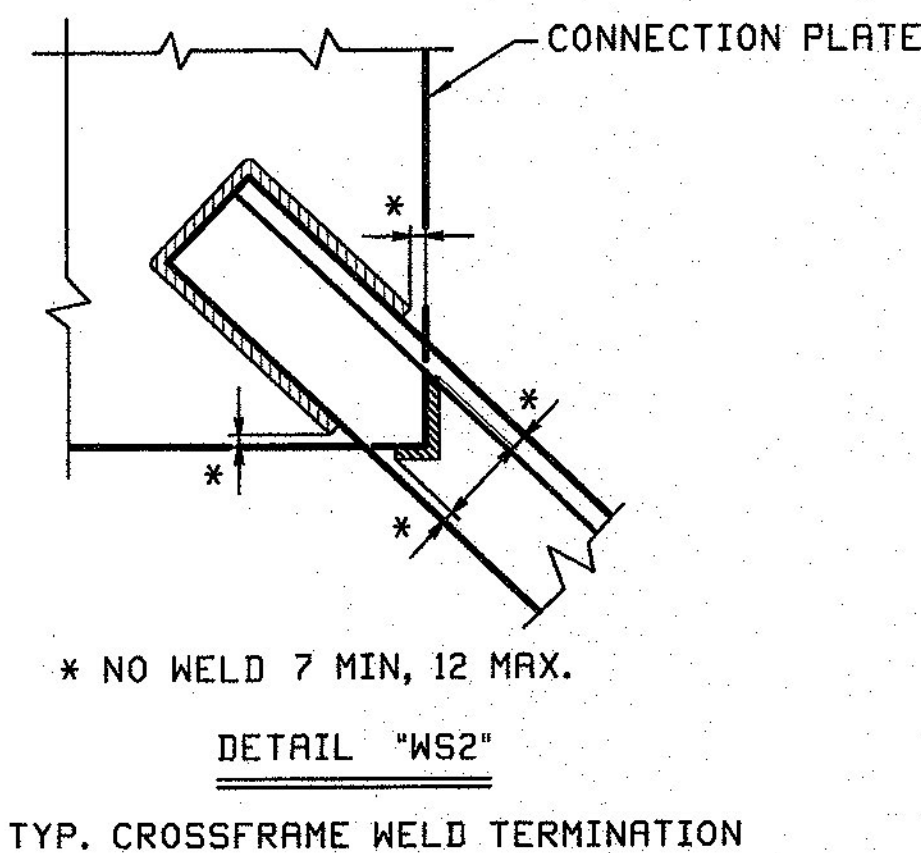
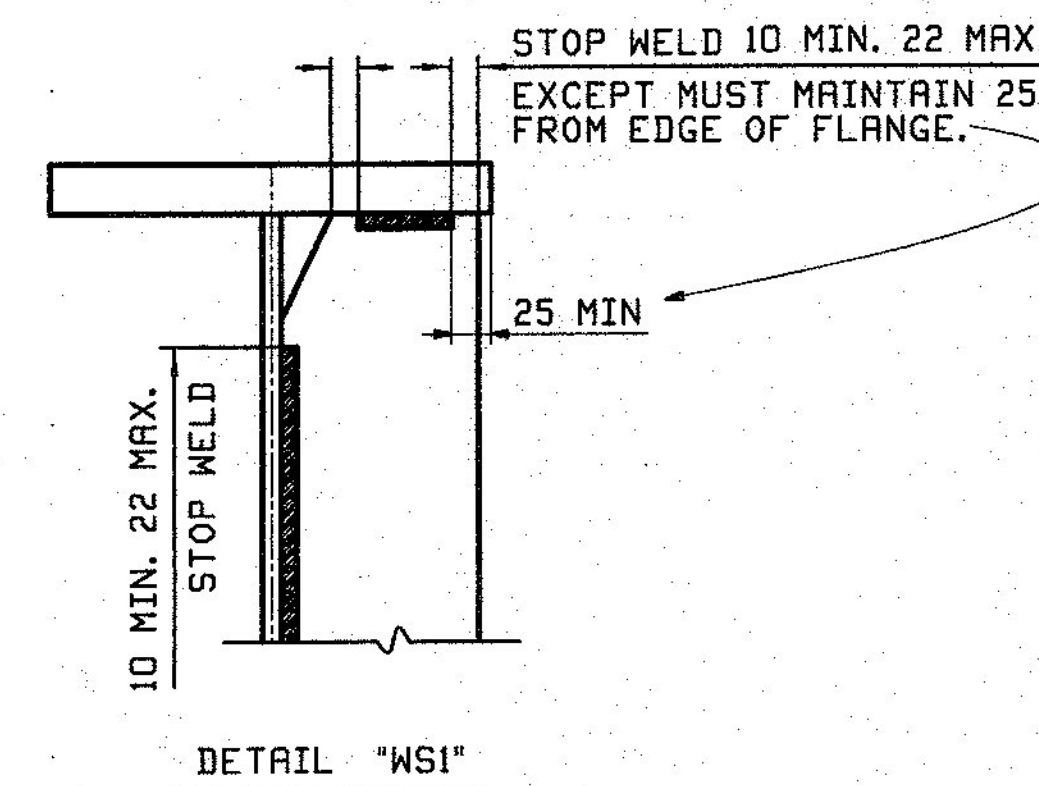
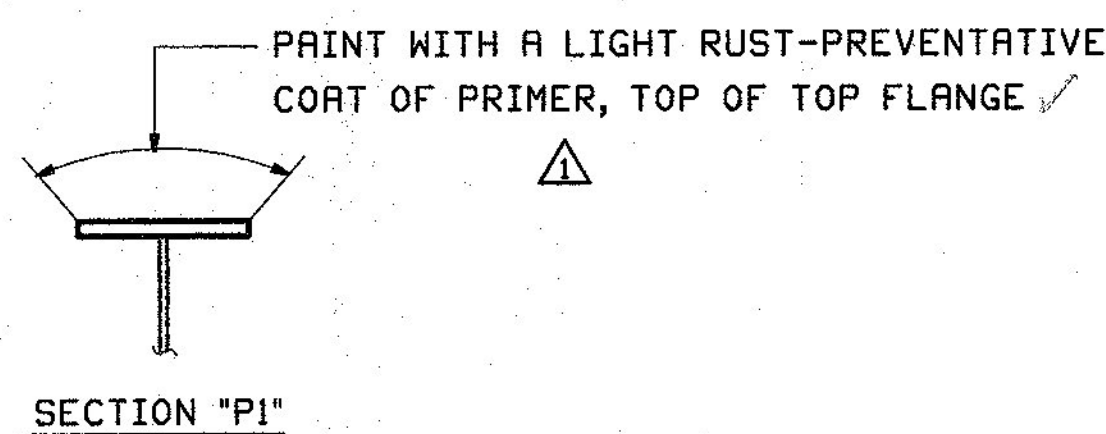
- 1) ALL STEEL SHALL BE BLAST CLEANED IN ACCORDANCE WITH SSPC SP-10.

PAINTING

- 1) THE GIRDER ENDS & ABUTMENT CROSSFRAMES WITHIN 4000mm OF THE ENDS OF STEEL AT ABUT 1 SHALL BE PAINTED, EXCEPT AS NOTED (SEE SKETCH "P").
- 2) THE PAINT SYSTEM AND ITS APPLICATION SHALL CONFORM TO SECTION 900.645 OF THE PROJECT SPECIAL PROVISIONS (QC/QA CLEANING AND PAINTING STRUCTURAL COMPONENTS).
- 3) PAINT SYSTEM SHALL BE AS FOLLOWS:
 PRIMER: CARBOLINE 859 ORGANIC ZINC RICH PRIMER - 3.0 - 5.0 MILS DFT.
 INTERMEDIATE: CARBOLINE 888 EPOXY 4.0-6.0 MILS DFT.
 TOPCOAT: CARBOLINE 133 LH ALIPHATIC POLYURETHANE - 3.0-5.0 MILS DFT.
 TOPCOAT COLOR: BROWN FED. COLOR #20059. - SUBMIT COLOR SAMPLE TO DEPARTMENT.
- 4) BROWN GREASE CONFORMING TO SECTION 708.04 SHALL BE APPLIED TO ALL PAINTED AREAS IN THE FIELD FOLLOWING ERECTION.
- 5) PRIME COAT ONLY WITHIN 3" OF OPEN HOLES WITHIN THE PAINTED AREA.



SKETCH "P"



12/18	APPROVAL COMMENTS	CRK	PCP	12/13/12		
REV.	DATE	REMARKS	DWN	CHK	APVL	SHOP
MATERIAL:		SURFACE PREP. & PAINT:		HOLES:		SHOP BOLTS:
				AS NOTED		AS NOTED
DESCRIPTION: GENERAL NOTES						
CASCO BAY STEEL STRUCTURES, INC.						
1 WALLACE AVE. PHONE (207) 780-6722						
SOUTH PORTLAND, ME 04106 FAX. (207) 780-6726						
STRUCTURE: VT ROUTE 108, BRIDGE #21				DRAWN: CRK		DATE: 10/04
MAJOR COLLECTOR				TOWN OF CAMBRIDGE		CHKD: RLA
COUNTY OF LAMOILLE, VERMONT						DATE: 10/05
LOCATION: CAMBRIDGE, VERMONT			JOB NO.		DWG NO.	
PROJ NO. BRF 027-1(4)			524		GN1	
CUSTOMER: A. L. ST. ONGE CONTRACTING					REV. 1	

1/25ms
 Received
 Date by: *MGM*
 DEC 23 2012
 Approved
 BY: *MGM* DATE: 1/23/13

PCP - Rev. 18. 2012 10:58:38 AM - X:\mst\jms\1014\041\1.dwg