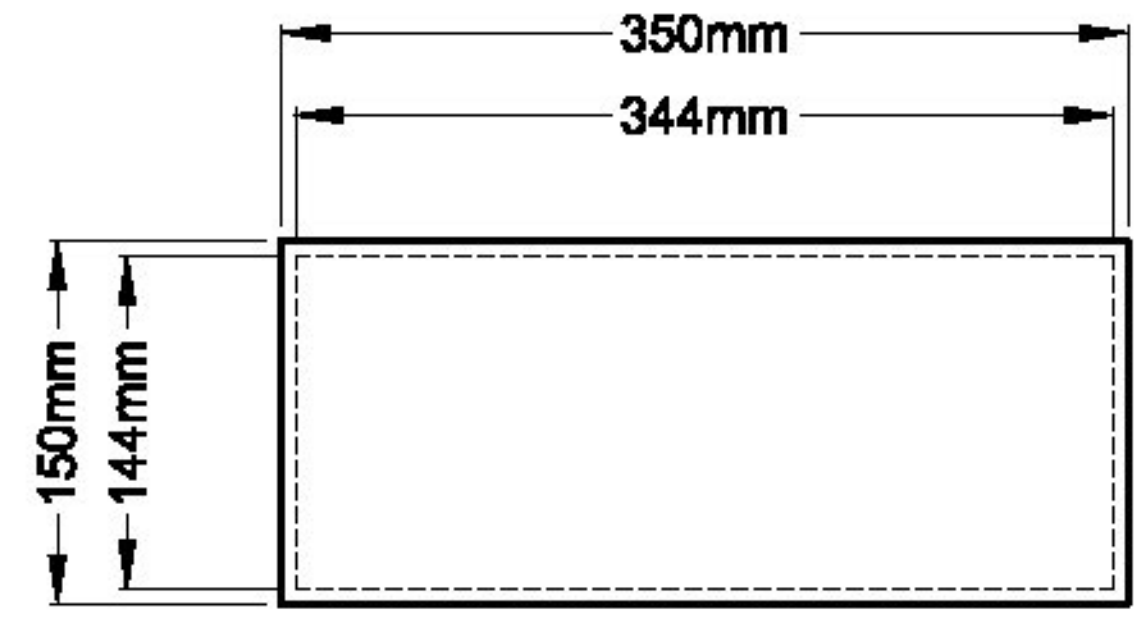
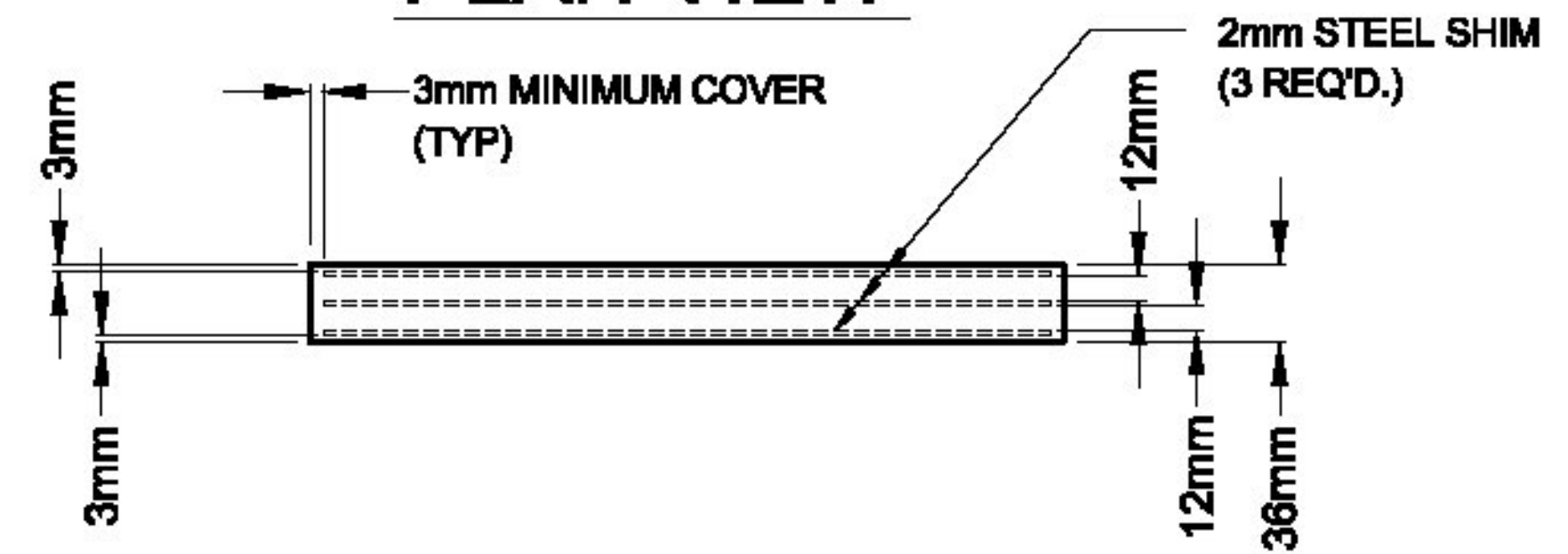


REVISIONS					
ZONE	REV	DESCRIPTION	REVISED BY	DATE	APPROVED



**PLAN VIEW**



**ELEVATION VIEW**

QTY. REQ'D. = 4  
LOCATION= ABUTMENT 2

**NOTES FOR LAMINATED ELASTOMERIC BEARING PADS (ITEM NO. 531.12):**

1. ALL STEEL SOLE PLATES SHALL BE AASHTO M270 GRADE 345.
2. ALL SOLE PLATES SHALL BE GALVANIZED AS PER STANDARD SPECIFICATIONS 506.15 AND 531.04(b), AS MODIFIED BY THE GENERAL SPECIAL PROVISIONS.
3. BEARINGS TO BE MANUFACTURED ACCORDING TO AASHTO LRFD STANDARD SPECIFICATIONS FOR HIGHWAY BRIDGES, SECTION 14 & 18, 17th. EDITION, 2002 AND 2010 INTERIMS.
4. ELASTOMERIC NATURAL RUBBER MATERIAL TO BE 50+/-5 DUROMETER HARDNESS, GR. 4
5. ALL STEEL PRODUCED IN THE U.S.A.
6. THE BEARINGS ARE DESIGNED SO THAT THE SUPERSTRUCTURE MAY BE ERECTED WHEN THE AMBIENT AIR TEMPERATURE IS WITHIN THE RANGE OF 40 DEG. F. TO 90 DEG. F.
7. ALL SWEDGED ANCHOR BOLTS A449, HH NUTS A-563, AND PLATE WASHERS A36, SHALL BE GALVANIZED
8. PRIOR TO GALVANIZING, ALL CORNERS AND EDGES OF STEEL PLATES, SHAPES, ETC. SHALL BE GROUND TO A 1/16" MIN. RADIUS (TYP).

Vermont Agency of Transportation  
**RECEIVED**  
CK'D BY M.E.M. OK'D BY \_\_\_\_\_  
Oct. 10, 2012  
RESUBMIT \_\_\_\_\_ APPROVED ✓  
BY M.Evans-Mongeon DATE Nov. 01, 2012

**CAMBRIDGE**  
PROJECT NUMBER: BR-027-1 (4)

**STEEL LAMINATED ELASTOMERIC BEARING PAD DETAILS**

**AMSCOT**  
STRUCTURAL PRODUCTS CORP.

SCALE: N.T.S.	APPRVD: BF	DRAWN BY: E.J.G.
DATE: 9/25/12	REVISION: 0	
FOR: A. L. ST. ONGE CONTRACTOR, INC.		
DWG NO: ALO12B1RO		SHEET 1 OF 5