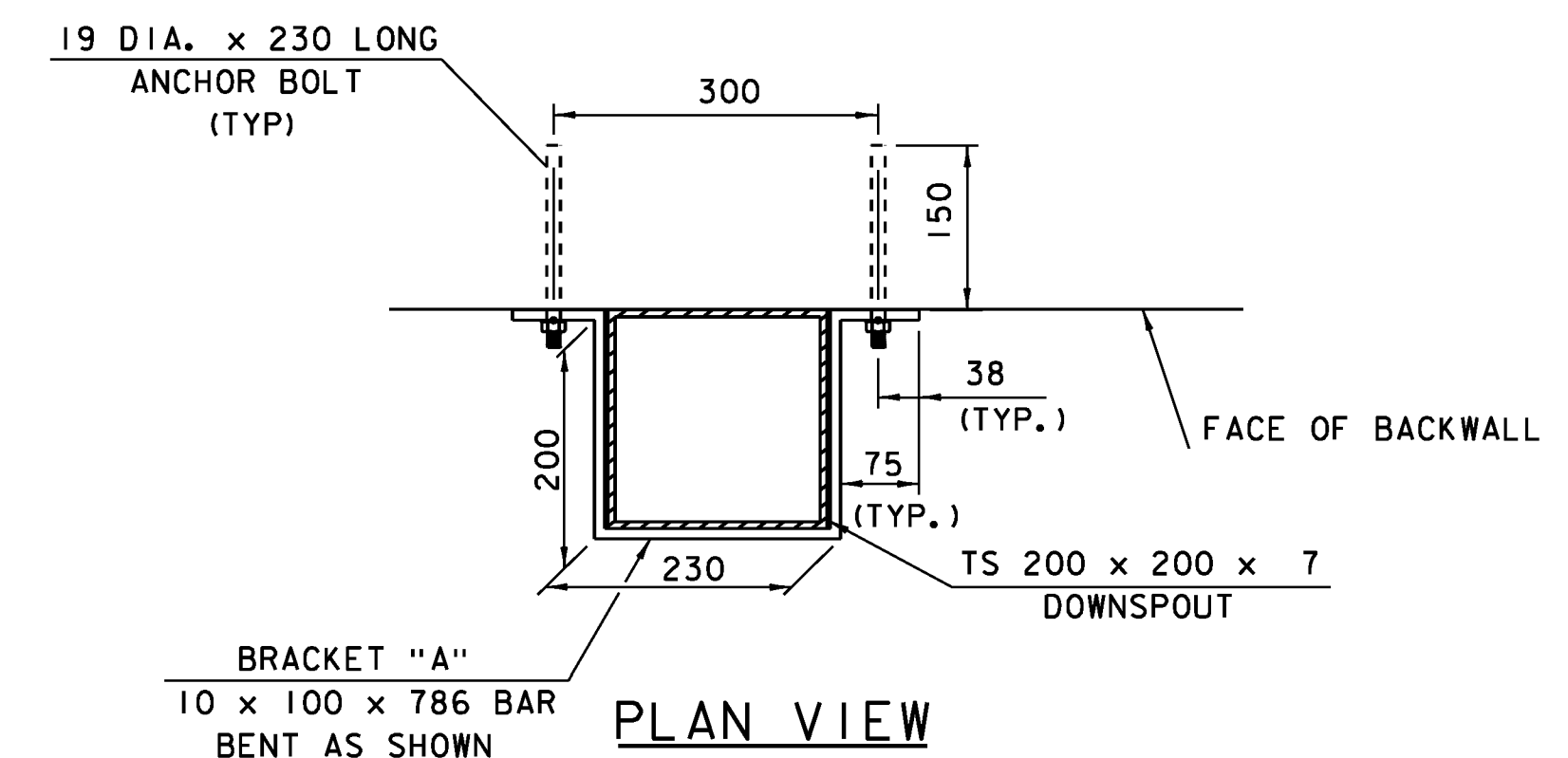
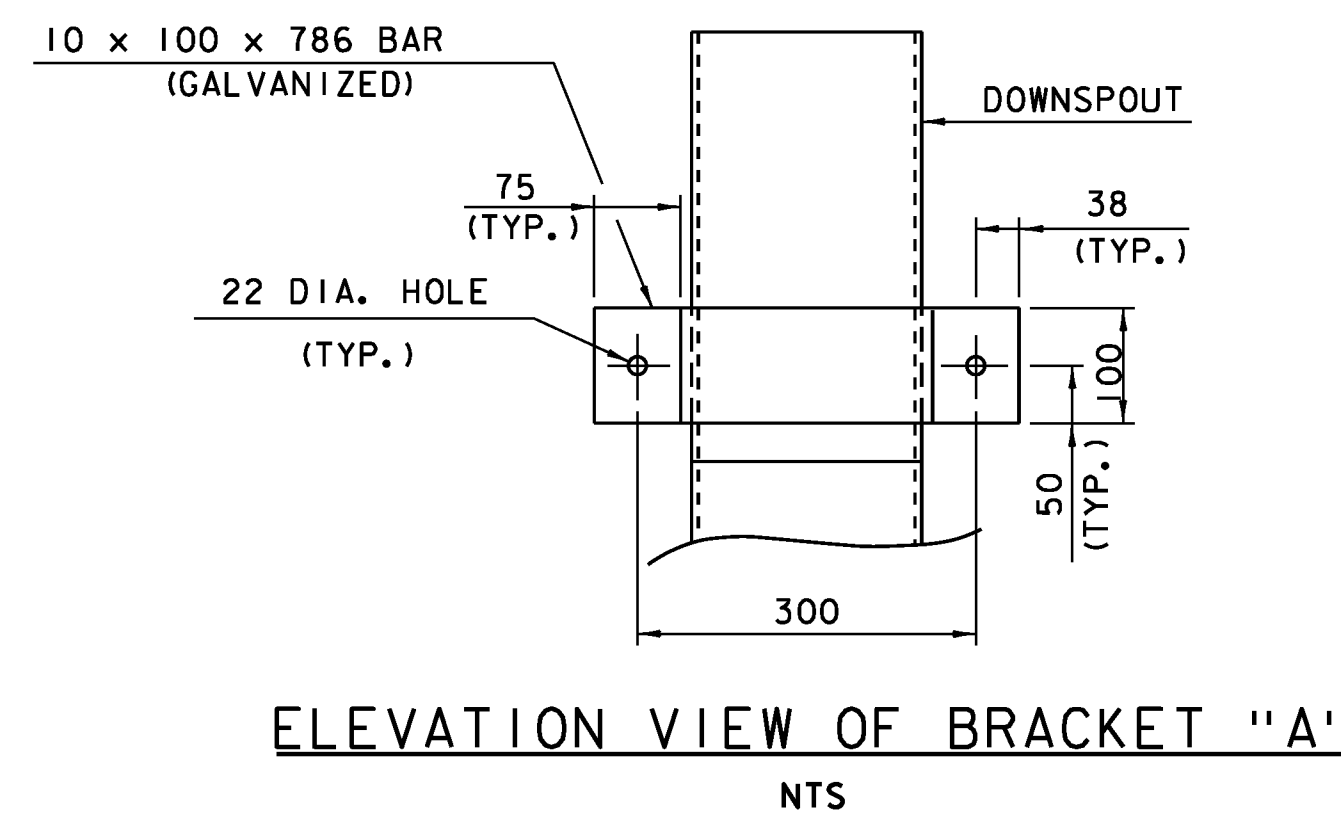
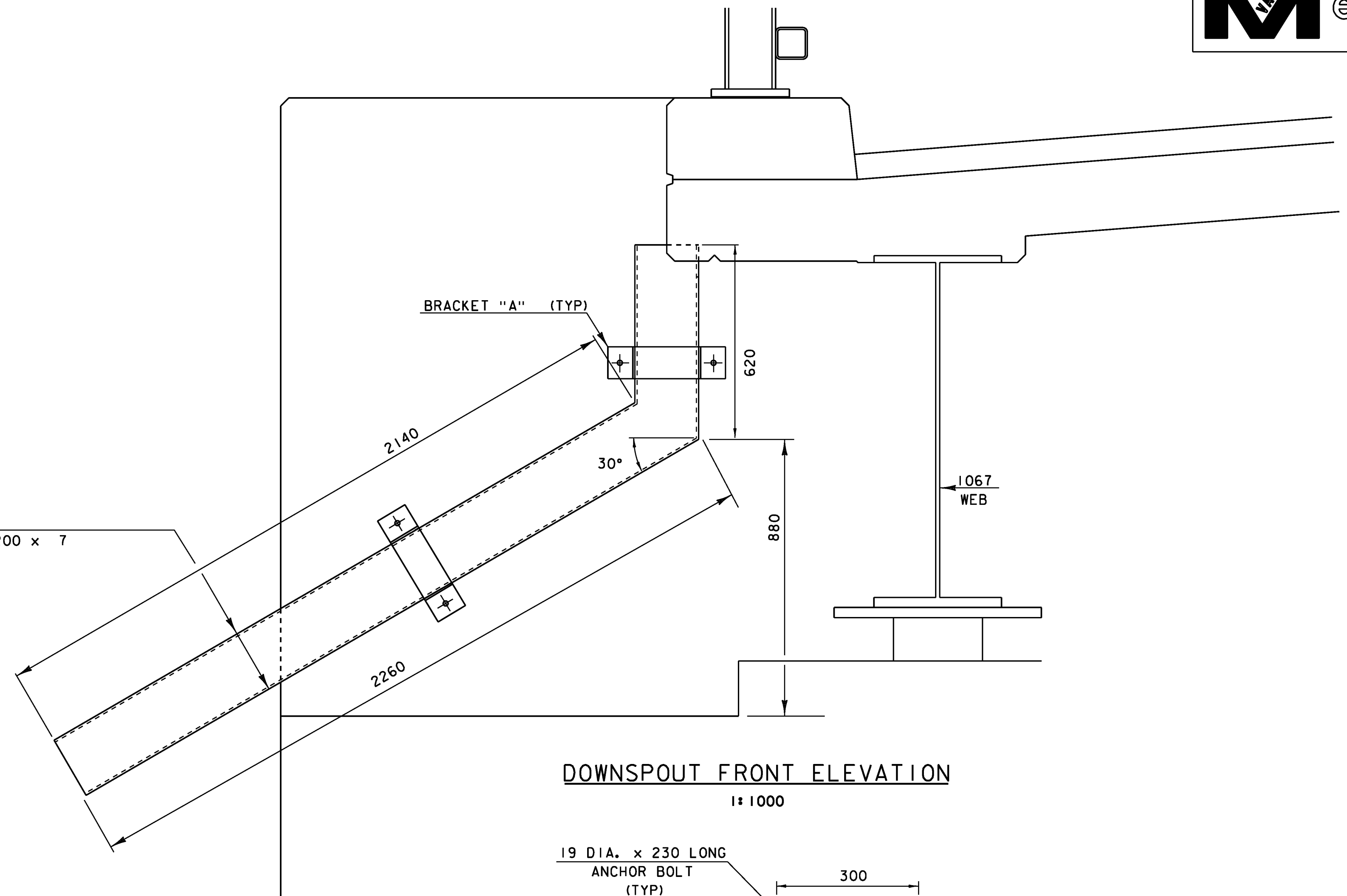
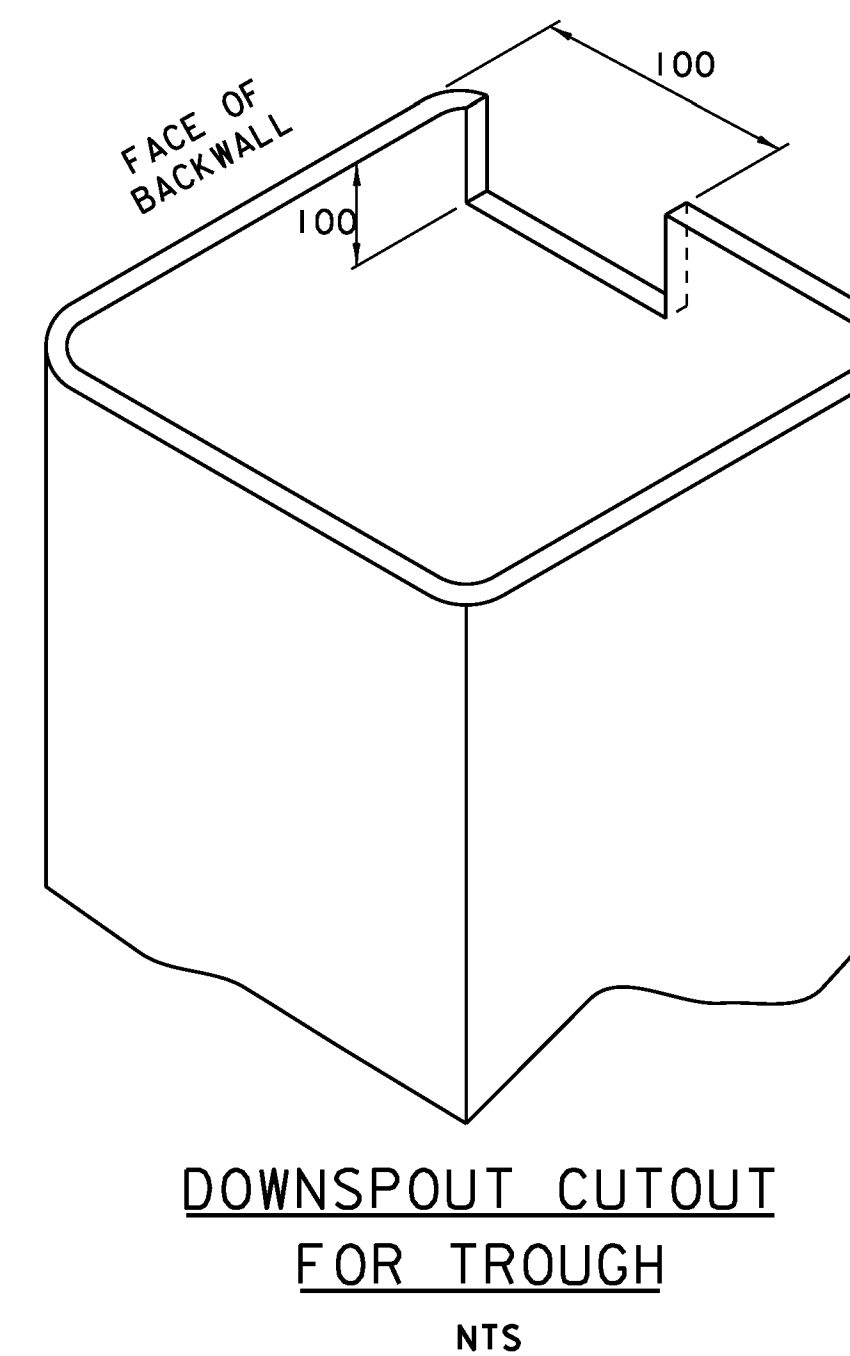


DOWNSPOUT
TS 200 x 200 x 7



**DETAILS FOR ATTACHING
DOWNSPOUT TO BACKWALL**



DOWNSPOUT NOTES

1. HOLLOW STRUCTURAL STEEL TUBING SHALL CONFORM TO ASTM A-500 OR A-501.
2. ALL PLATES, BARS, AND ANGLES SHALL CONFORM TO AASHTO M270M/M270 GR. 36.
3. DOWNSPOUT SHALL BE GALVANIZED IN ACCORDANCE WITH AASHTO M111M/M111 AFTER FABRICATION.
4. ALL BOLTS AND RELATED HARDWARE SHALL BE ASTM A-307 AND SHALL BE GALVANIZED IN ACCORDANCE WITH AASHTO M232M/M232.
5. ANY PLACE WHERE THE GALVANIZING HAS BEEN DAMAGED ON THE DOWNSPOUT EITHER BY CUTTING, BURNING, WELDING, PLACING, OR ANY OTHER MEANS, IT SHALL BE REPAIRED BY THOROUGHLY CLEANING THE DAMAGED AREAS WITH A WIRE BRUSH AND PAINTING THE DAMAGED AREAS WITH TWO COATS OF AN APPROVED SEALANT.
6. DOWNSPOUT AND ALL ANCHOR BOLTS WITH RELATED HARDWARE SHALL BE PAID FOR UNDER THE ITEM 506.60 "STRUCTURAL STEEL".



PROJECT NAME: CAMBRIDGE	PLOT DATE: 05-JUN-2012
PROJECT NUMBER: BRF 027-(4)	DRAWN BY: R. PELLETT
FILE NAME: s78f163dwspt.dgn	CHECKED BY: T. FILLBACH
PROJECT LEADER: M. EVANS-MONGEON	SHEET 166 OF 214
DESIGNED BY: T. FILLBACH	
DOWNSPOUT DETAILS	