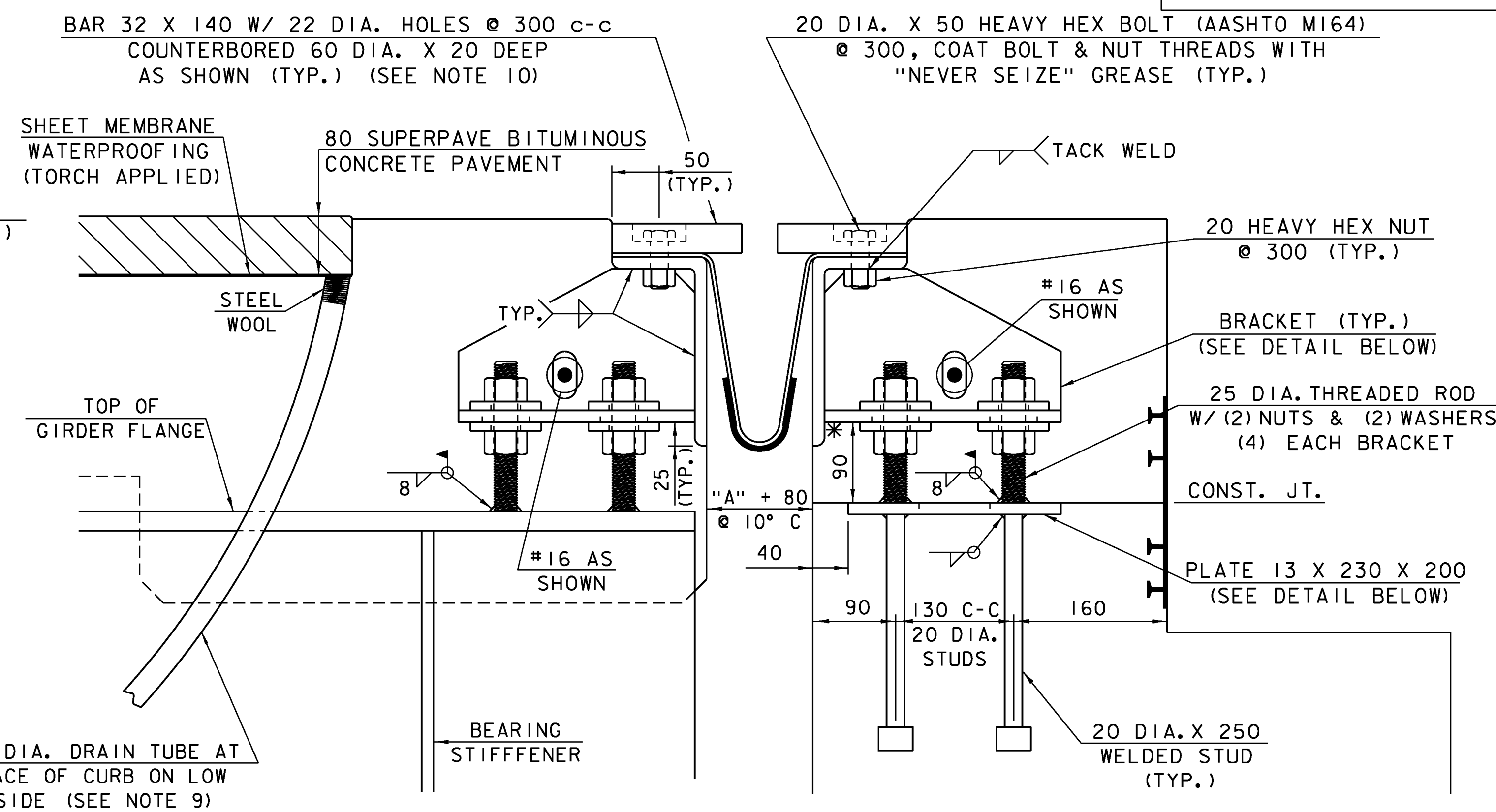


TYPICAL SECTION BETWEEN GIRDERS
(NORMAL TO ϕ BEARING)
NTS

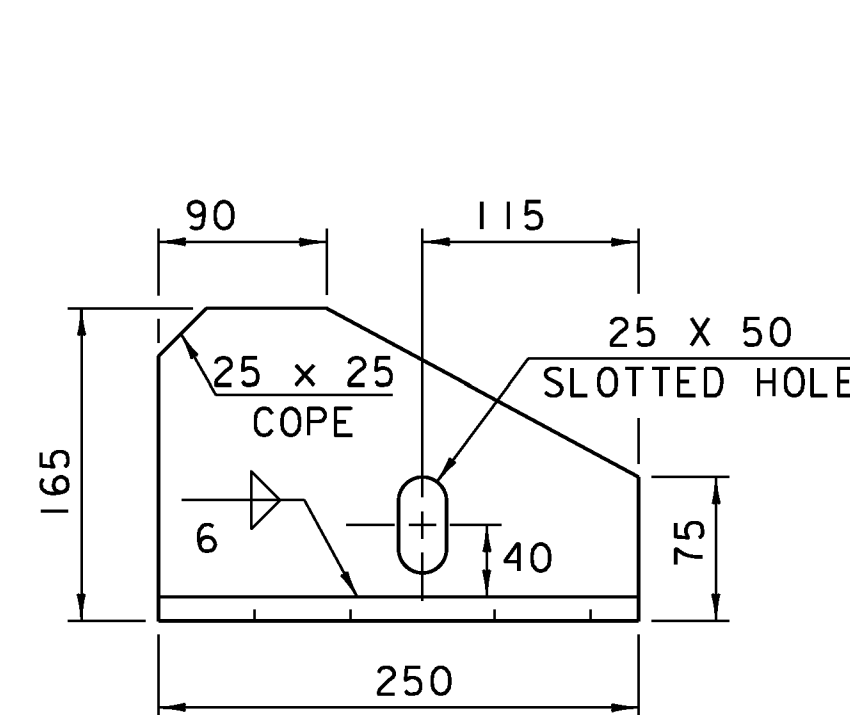


TYPICAL SECTION AT GIRDERS
(NORMAL TO ϕ BEARING)
NTS

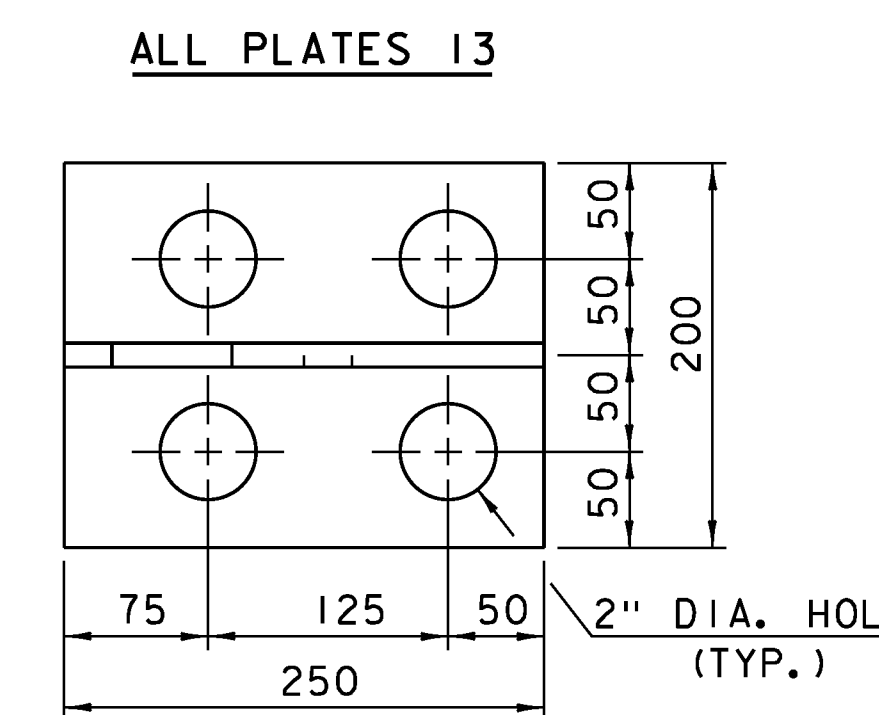
* THESE DIMENSIONS ARE THEORETICAL AND MAY CHANGE DEPENDING UPON THE OUTCOME OF THE BEAM PROFILES.

1. DETAILS ON THIS SHEET ARE FOR ITEM 516.11, BRIDGE EXPANSION JOINT, VERMONT.
2. PREFORMED FABRIC MATERIAL SHALL BE CONTINUOUS AND SHALL CONFORM TO SUBSECTION 707.07 OF THE STANDARD SPECIFICATIONS.
3. BUTYL RUBBER TAPE SHALL MEET THE REQUIREMENTS OF SUBSECTION 707.12.
4. THE FINAL FINISH OF THE EXPANSION DEVICE SHALL BE COVERED DURING THE PLACING OF BRIDGE DECK CONCRETE.
5. ALL STEEL COMPONENTS SHALL BE AASHTO M270 GRADE 36 GALVANIZED OR METALIZED AS PER SUBSECTION 516.02 OF THE STANDARD SPECIFICATIONS AS MODIFIED BY THE GENERAL SPECIAL PROVISIONS UNLESS OTHERWISE SPECIFIED.
6. THE ITEM BRIDGE EXPANSION JOINT, VERMONT SHALL INCLUDE THE FABRICATION AND ERECTION OF THE COMPLETE JOINT ASSEMBLY INCLUDING ALL STEEL PLATES, BRACKETS, ANGLES, WELDED STUDS OR RODS, PREFORMED FABRIC DRAIN TROUGH MATERIAL AND PLASTIC DRAIN TUBES, BUTYL RUBBER TAPE AND ANY OTHER MISCELLANEOUS MATERIAL NECESSARY TO INSTALL JOINT.
7. THE 100 X 200 X 13 ANGLES SHALL BE FURNISHED AS ONE CONTINUOUS PIECE. THE 32 X 140 BARS EACH SIDE OF THE JOINT SHALL BE PROVIDED IN TWO EQUAL LENGTHS.
8. COAT CONCRETE CONTACT SURFACES WITH EPOXY BONDING COMPOUND MEETING THE REQUIREMENTS OF SUBSECTION 719.02 OF THE STANDARD SPECIFICATIONS. PAYMENT SHALL BE INCIDENTAL TO ITEM 516.11, BRIDGE EXPANSION JOINT, VERMONT.
9. A 25 DIAMETER PLASTIC DRAIN TUBE (PER STD. SPEC. 740.06) SHALL BE INSTALLED AS SHOWN AT THE FACE OF CURB. THE UPPER END IS TO BE PLUGGED WITH STEEL WOOL AND THE LOWER END IS TO EXTEND BELOW THE BOTTOM OF THE ADJACENT BEAM. THE DRAIN TUBES SHALL BE FASTENED TO THE BEAMS USING A METHOD APPROVED BY THE ENGINEER.
10. FILL COUNTERBORED HOLES WITH HOT POURED JOINT SEALER SUBSECTION 707.04 AFTER BOLT INSTALLATION. PAYMENT FOR THE WORK SHALL BE INCIDENTAL TO ITEM 516.11.

11. PAYMENT FOR WATERSTOP SHALL BE INCIDENTAL TO ITEM 501.34, HIGH PERFORMANCE CONCRETE, CLASS B.
12. A DRIP BEAD OF 6 X 180 STRIP OF PREFORMED MATERIAL SHALL BE CEMENTED TO THE BOTTOM OF THE FABRIC TROUGH USING AN ADHESIVE APPROVED BY THE MANUFACTURER. THE DRIP BEAD SHALL BE APPLIED 25 FROM THE DOWNSPOUT END OF THE TROUGH.
13. FABRIC TROUGH SHALL BE THOROUGHLY CLEANED AND FLUSHED AFTER PAVING OPERATION.
14. THE EXPANSION JOINT SHALL BE SHOP ASSEMBLED AND SHIPPED AS ONE UNIT.



BRACKET ELEVATION



BRACKET PLAN

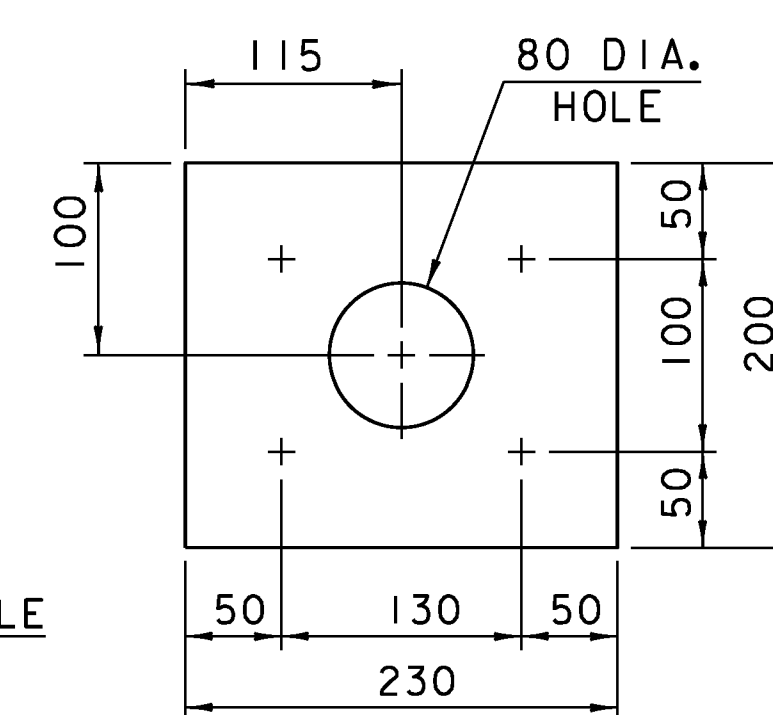
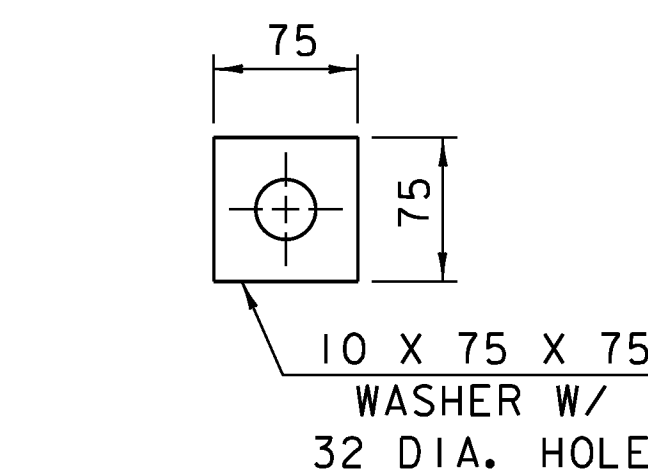


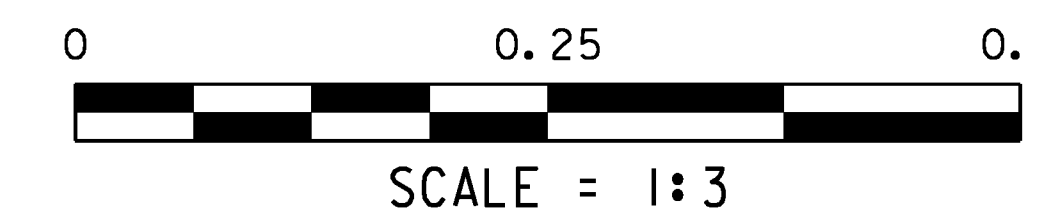
PLATE PLAN



WASHER FOR BRACKET

TEMP	"A" DIST.
-30°C	57
-20°C	51
-10°C	44
0°C	38
10°C	31
20°C	25
30°C	18
40°C	12

"A" IS THE SETTING BEFORE DEAD LOADS ARE IN PLACE.



PROJECT NAME: CAMBRIDGE	PLOT DATE: 05-JUN-2012
PROJECT NUMBER: BRF 027-1(4)	DRAWN BY: R. PELLET
FILE NAME: s78f163dwspt.dgn	CHECKED BY: T. FILLBACH
DESIGNED BY: VAOT	EXPANSION JOINT DETAILS
	SHEET 164 OF 214