

\* THE NUMBER OF BARS SHOWN IS FROM ABUTMENT TO ABUTMENT.

\* 535 - ES1603 @ 150 TOP  
 \* 268 - ES1901 @ 300 BOTTOM  
 \* 269 - ES1605 @ 300 IN CURB TIGHTER SPACING @ POSTS (TYP)

LAP 660 MIN. (TYP)

CL VT ROUTE 108 STATIONING

MID POINT BRIDGE

33-ES1604 @ 300 (FIT BETWEEN GIRDERS) (ABUT. #1 ONLY)

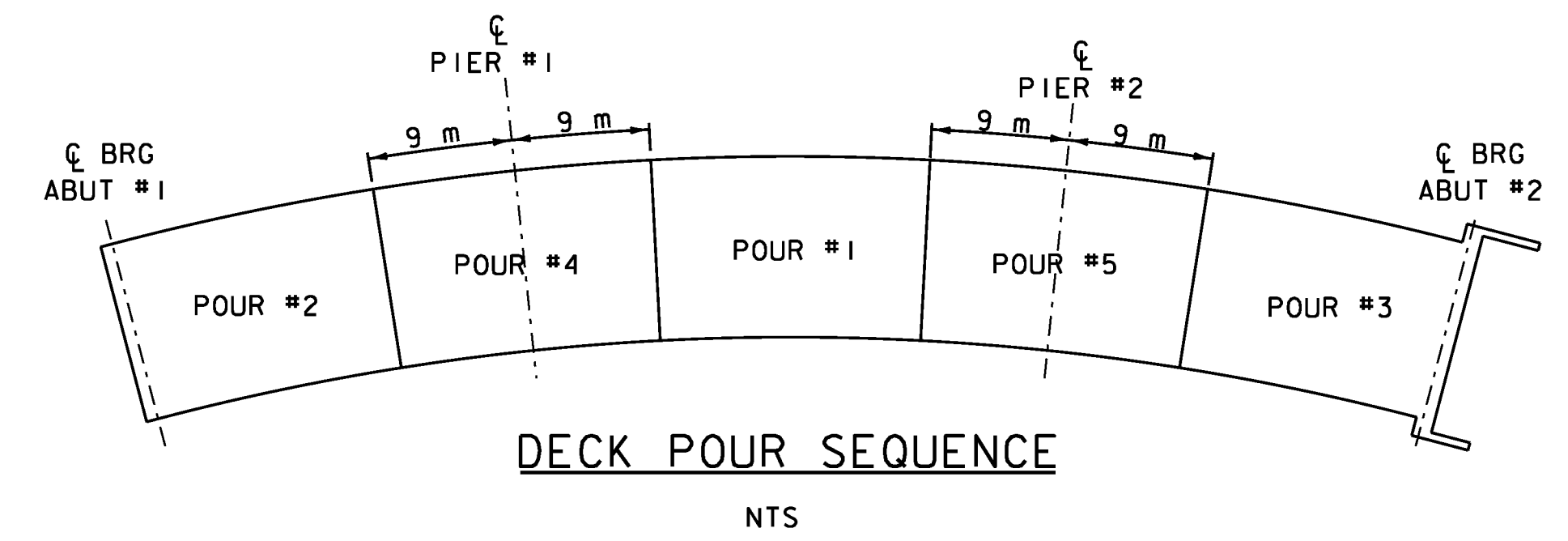
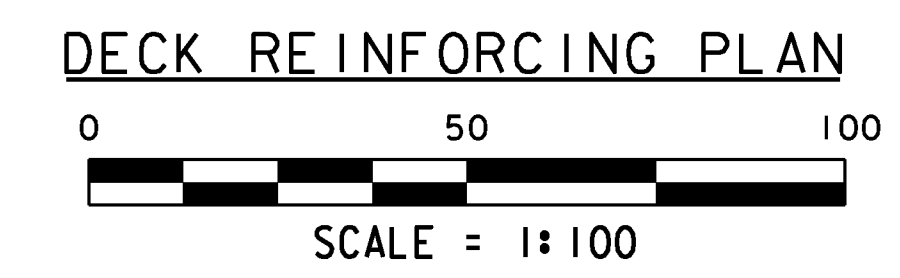
3-ES1606 AS SHOWN BETWEEN GIRDERS (ABUT. #1 ONLY)

\* 252 - ES1605 @ 300 IN CURB TIGHTER SPACING @ POSTS (TYP) SEE STD. S-360a

36 - ES1601 @ 300 TOP & BOTTOM

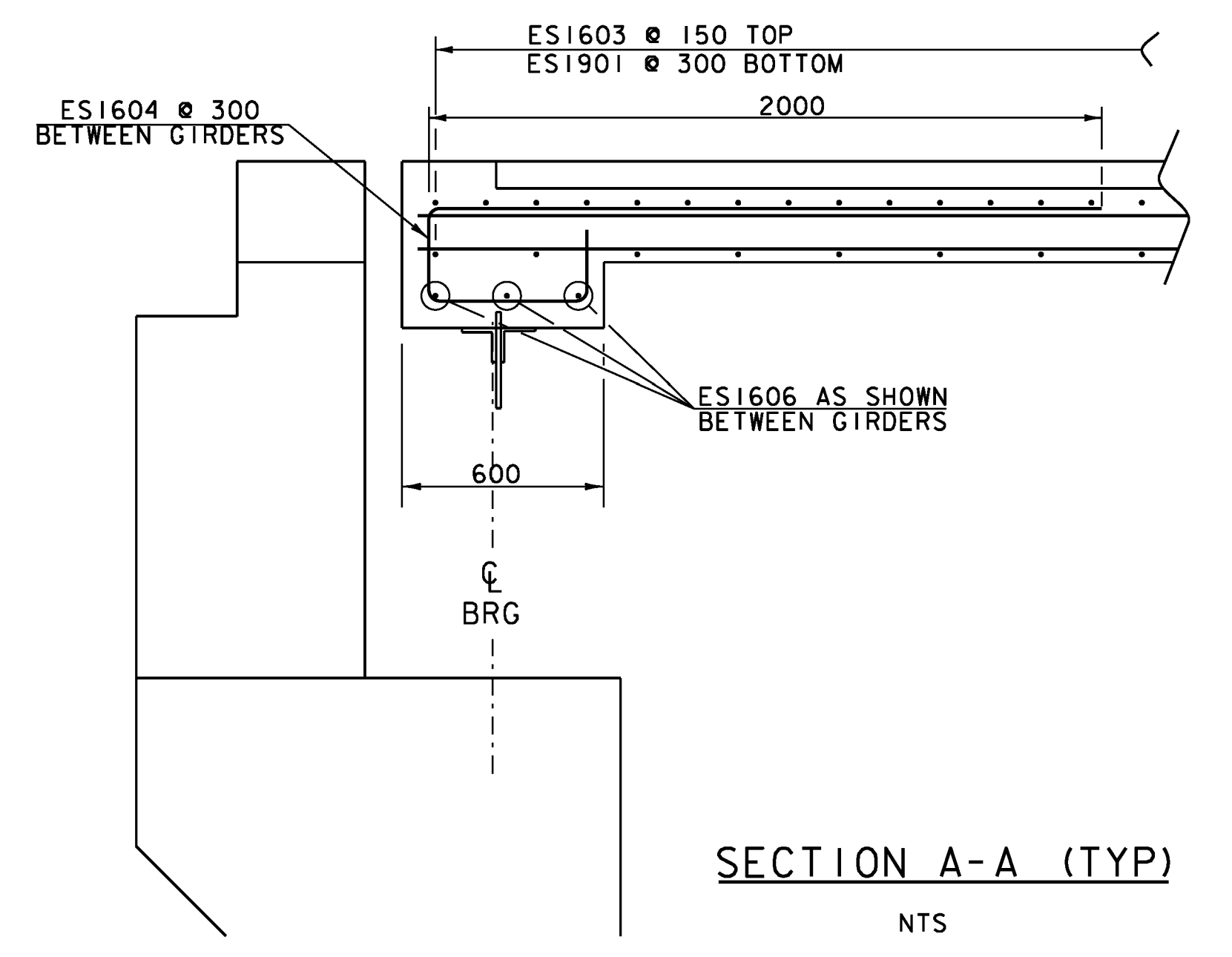
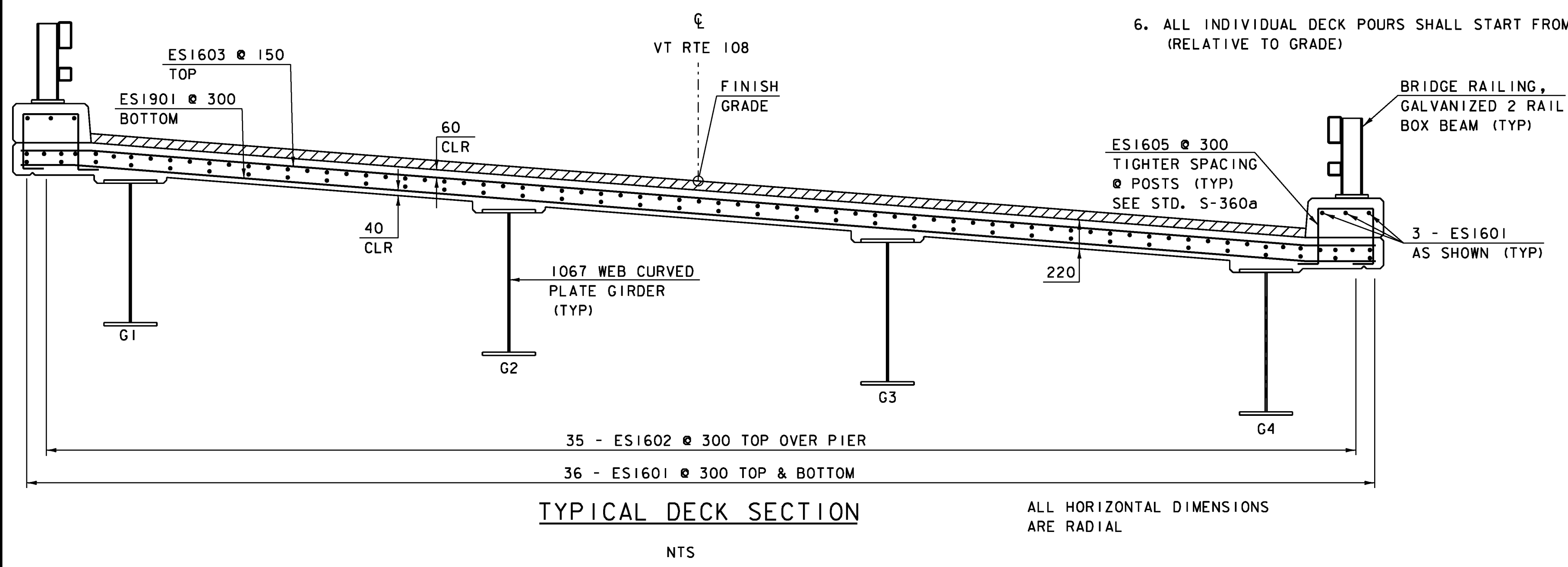
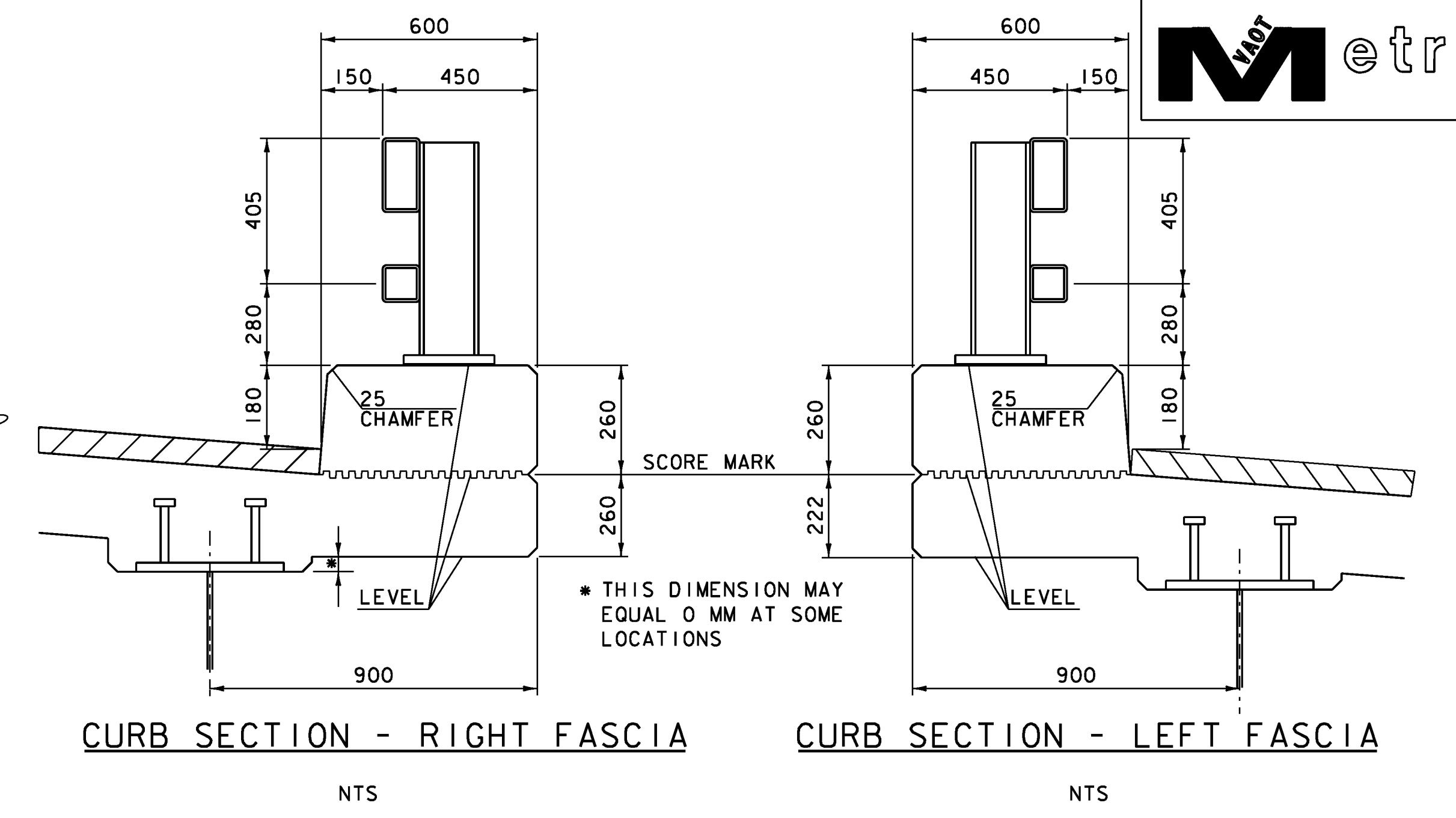
35 - ES1602 @ 300 TOP OVER PIER (TYP)

NOTE  
 1. 3 x 84 = 252 - ES1605 @ POSTS  
 2. REINFORCING SYMMETRICAL ABOUT MIDPOINT OF THE BRIDGE



**DECK POUR SEQUENCE NOTES:**

1. ANY POUR SEQUENCE OTHER THAN INDICATED SHALL BE SUBMITTED IN WRITING TO THE ENGINEER FOR APPROVAL
2. IF APPROVED BY THE ENGINEER, POURS 1, 2 AND 3 MAY BE POURED THE SAME DAY, PROVIDED THAT THE MAXIMUM TIME SPAN OF THE POUR IS EIGHT HOURS. THE SAME IS TRUE OF POURS 4 AND 5.
3. THE INDICATED POUR SEQUENCE SHALL BE FOLLOVED AND A RETARDING ADMIXTURE USED SO THAT THE DECK CONCRETE WILL NOT SET UP UNTIL ALL OF THE POUR HAS BEEN MADE. THE RETARDING ADMIXTURE SHALL BE INCIDENTAL TO ITEM 501.33 CONCRETE, HIGH PERFORMANCE CLASS A.
4. TRANSVERSE BRIDGE SLAB CONSTRUCTION JOINTS, AS SHOWN ON DETAIL SHEET SD-501.00, SHALL BE USED BETWEEN ADJACENT DECK POURS.
5. THERE SHALL BE MINIMUM DELAY PERIOD OF 96 HOURS BETWEEN ADJACENT POURS.
6. ALL INDIVIDUAL DECK POURS SHALL START FROM THE THE LOW END (RELATIVE TO GRADE)



**NOTE:**  
 NF - NEAR FACE  
 FF - FAR FACE  
 EF - EACH FACE  
 ▲ - CUT TO FIT IN FIELD  
 75 CLR. UNLESS OTHERWISE SPECIFIED ON THE PLANS.

PROJECT NAME:	CAMBRIDGE	FILE NAME:	78f163super.dgn	PLOT DATE:	05-JUN-2012
PROJECT NUMBER:	BRF 027-1 (4)	PROJECT LEADER:	M. EVANS-MONGEON	DRAWN BY:	R. PELLETT
DESIGNED BY:	T. FILLBACH	DECK REINFORCING		CHECKED BY:	T. FILLBACH
				SHEET	160 OF 214