

GPS CONTROL POINTS

W-20

CGS BENCH MARK DISK SET IN TOP OF CONCRETE MONUMENT

"W-20 1935"

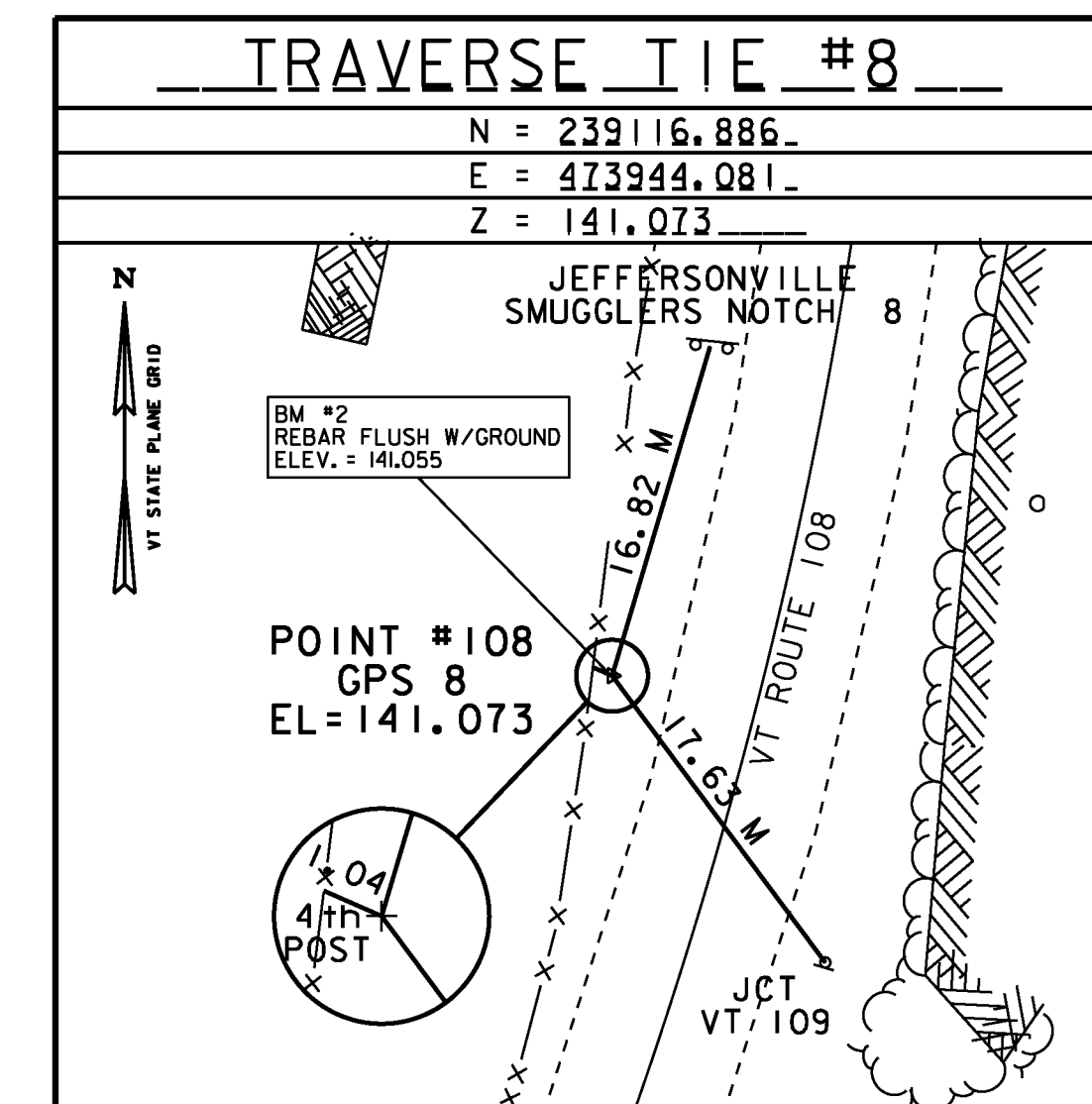
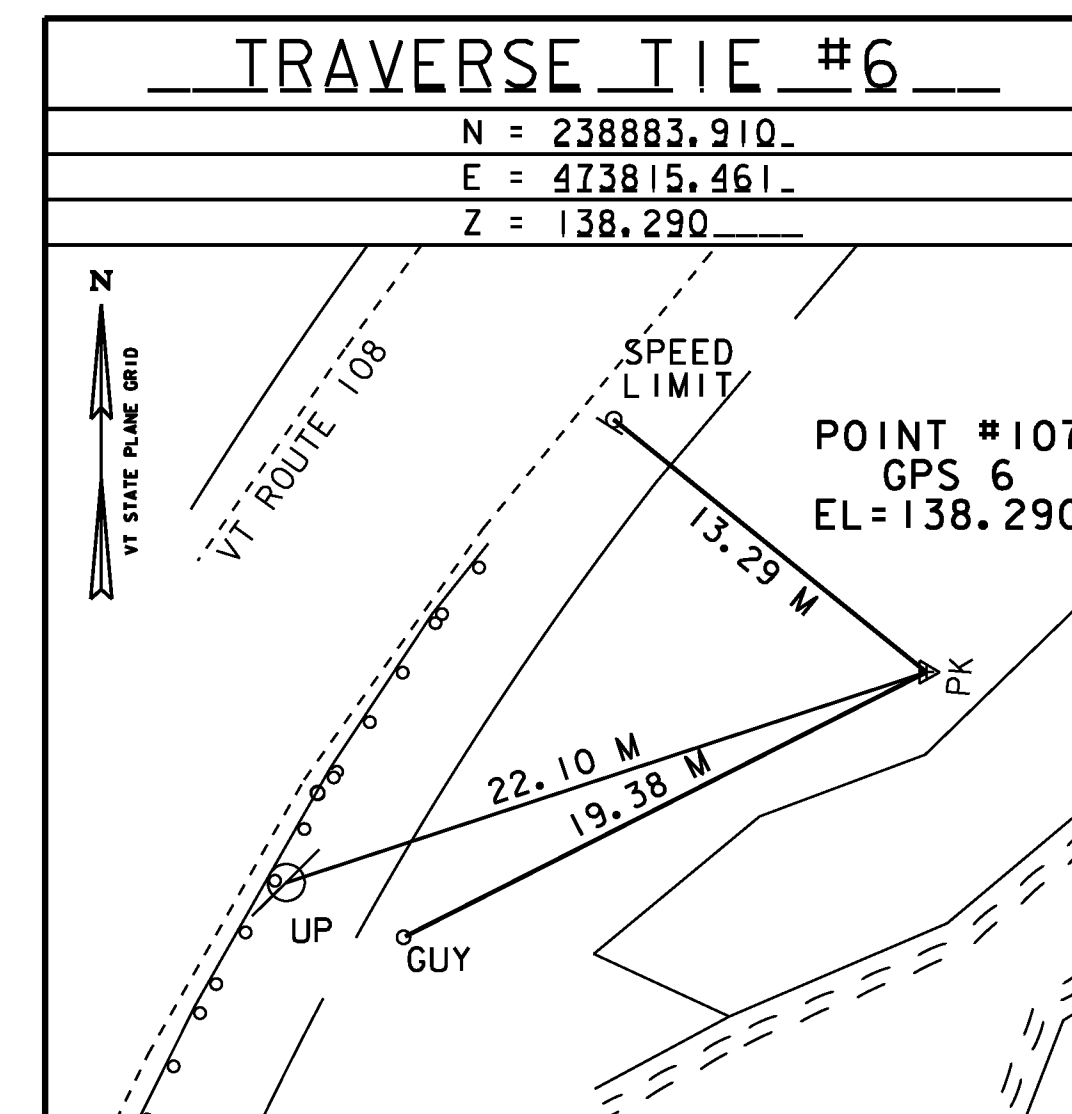
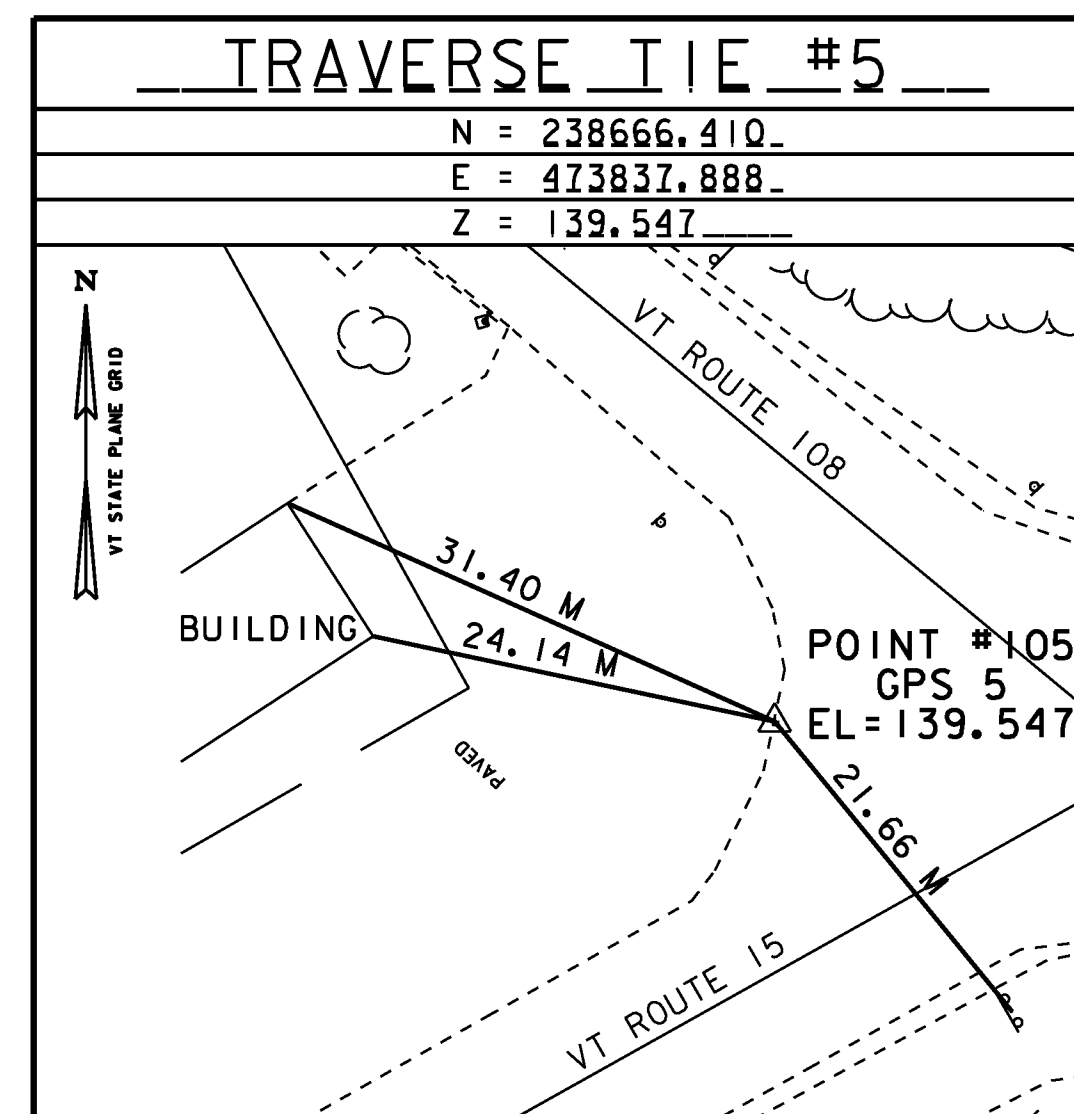
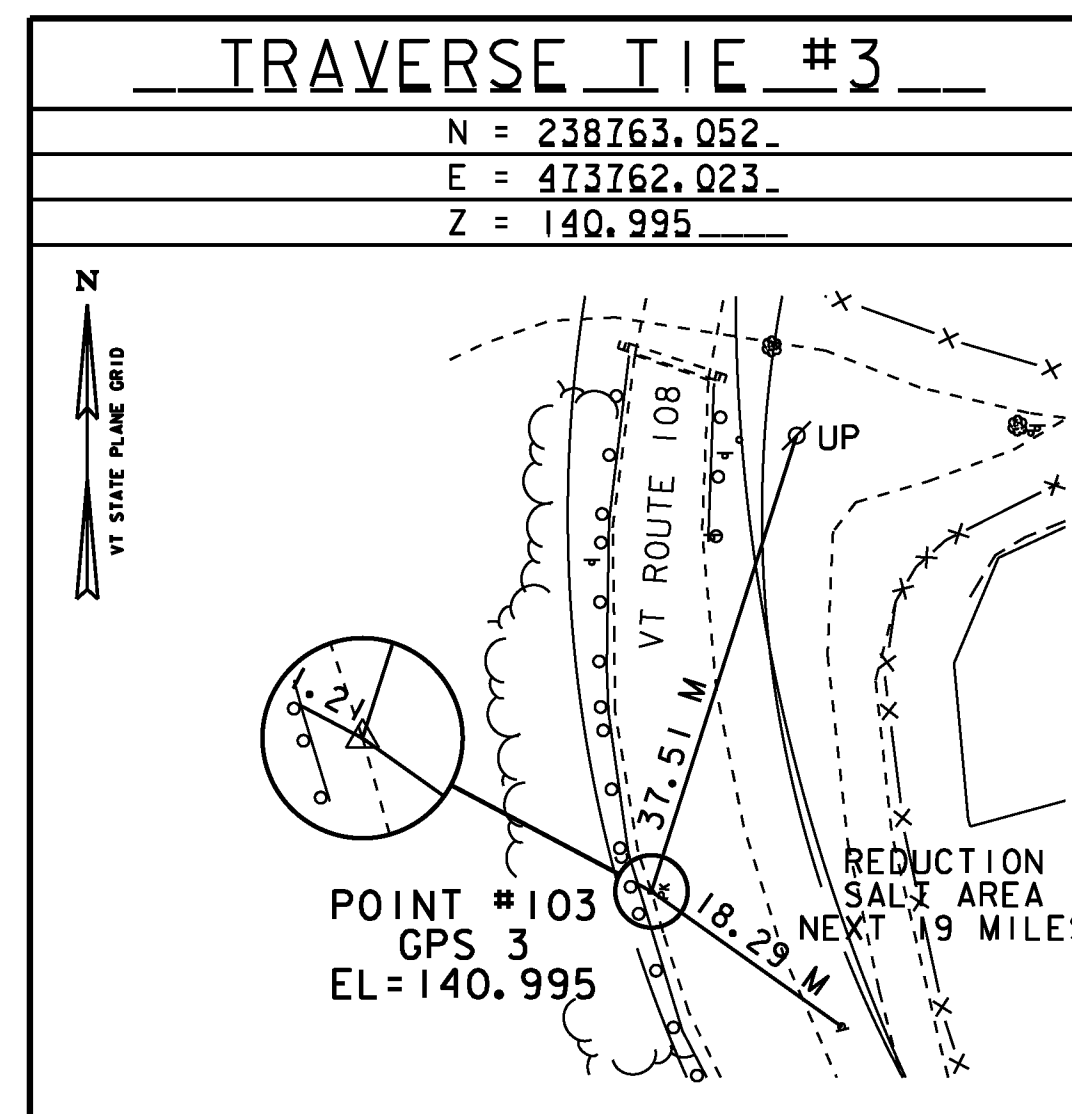
N = 1342827.008
E = 4342155.375
ELEV = 140.786

STATION RECOVERY (1994)

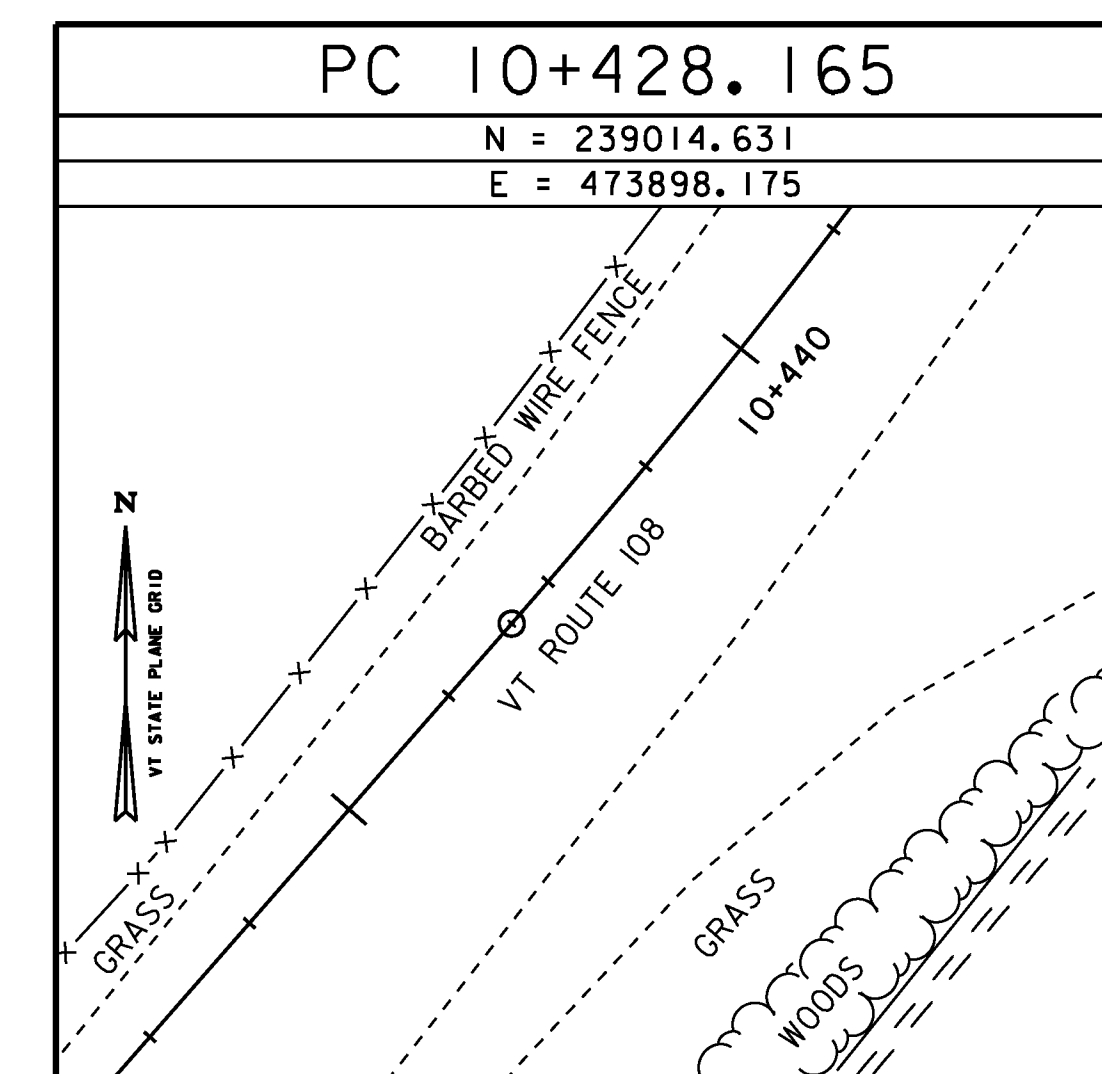
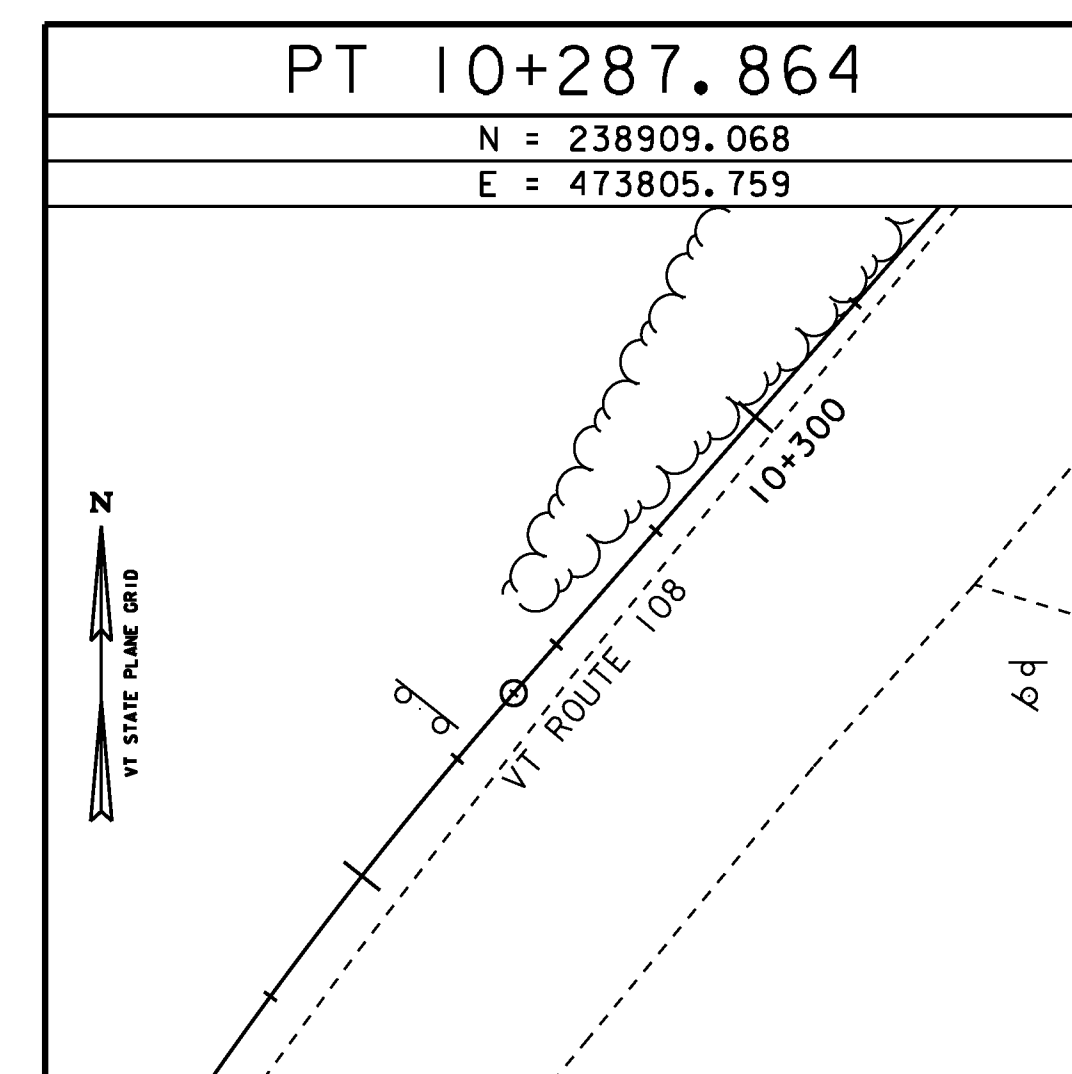
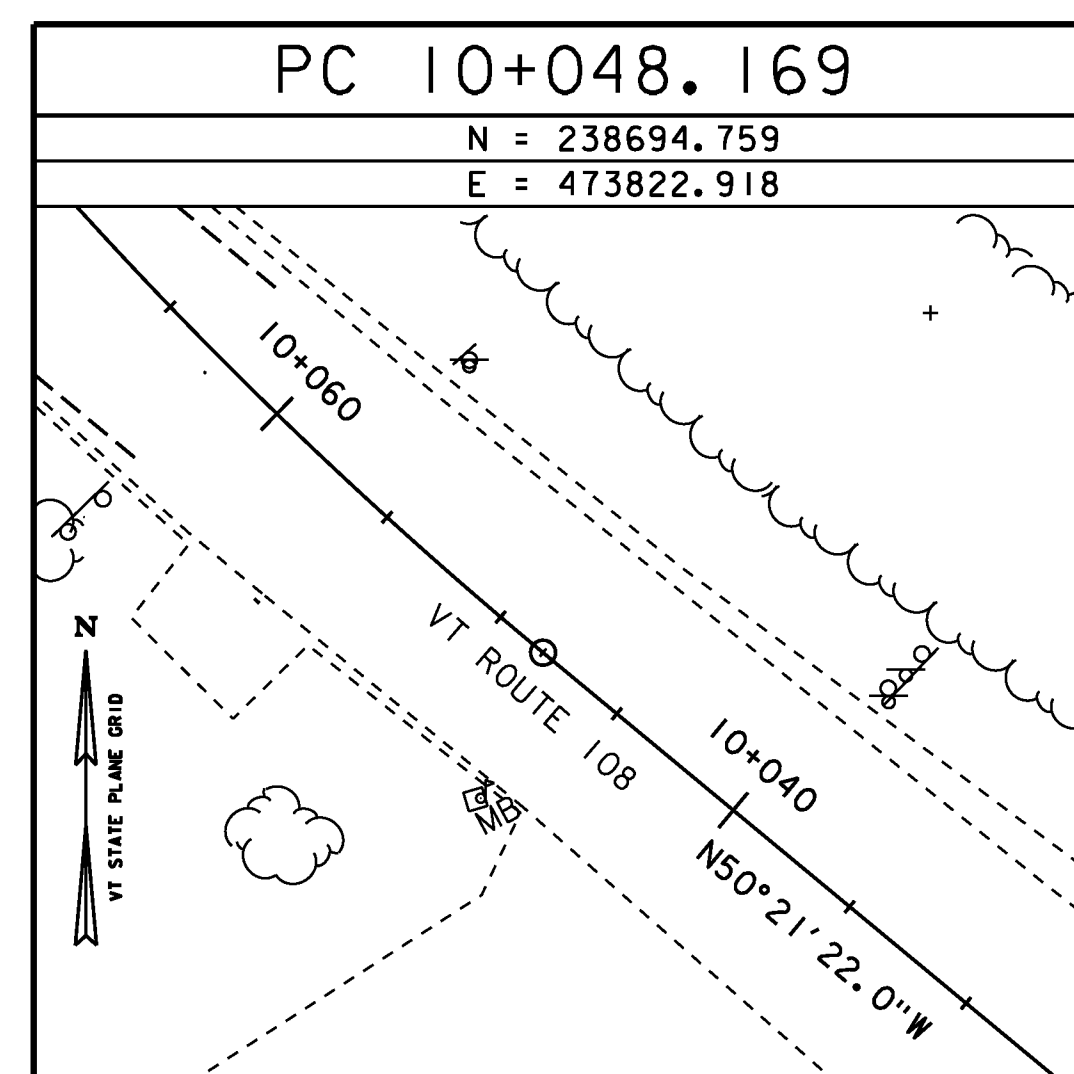
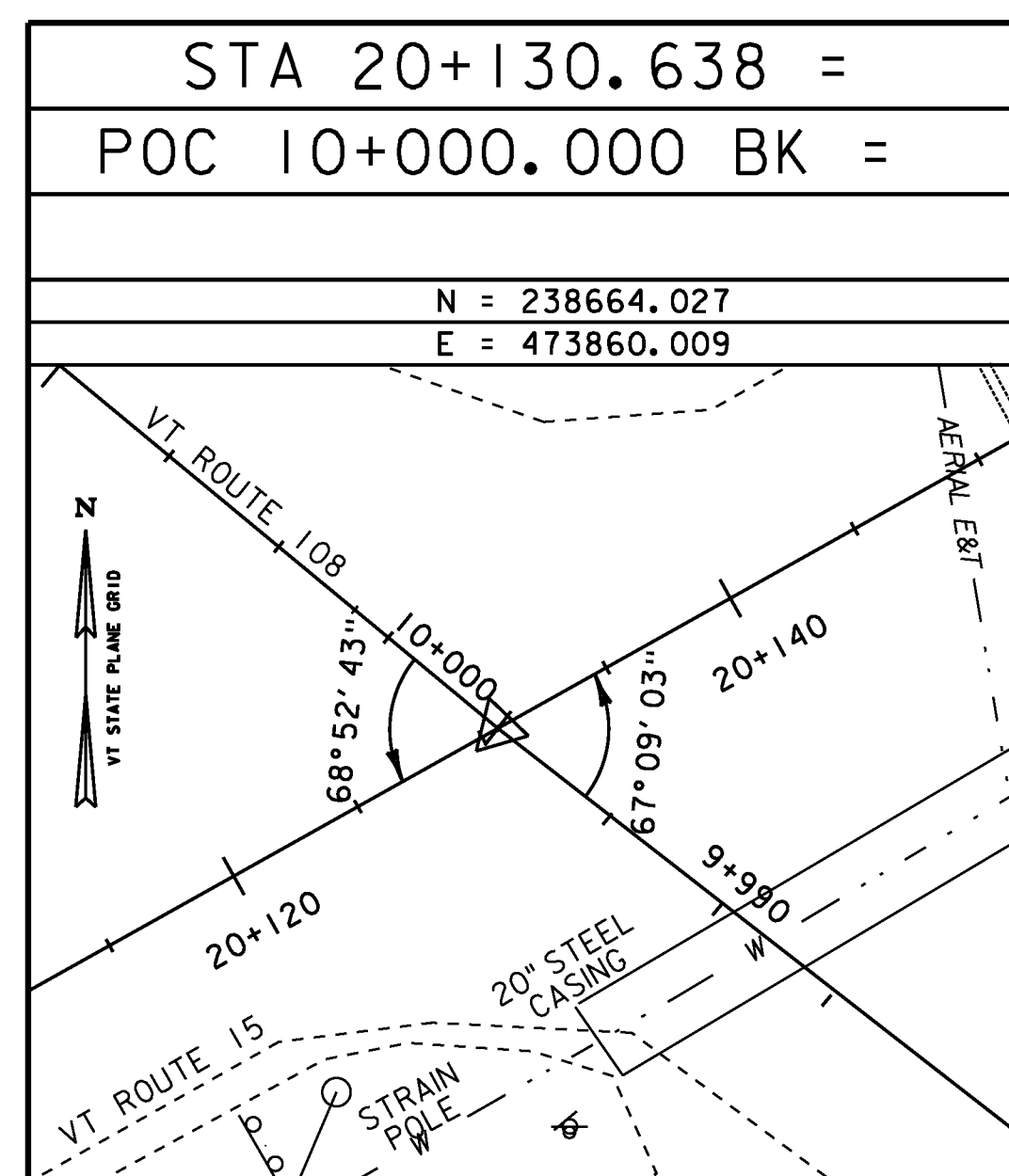
TO REACH THE MARK FROM THE JUNCTION OF STATE HIGHWAY 108 AND 15 IN JEFFERSONVILLE, GO EAST ON HIGHWAY 15 FOR 1.05 KM (0.65 MILE) TO A FORK. TAKE THE LEFT FORK AND GO NORTHEAST ON A PAVED ROAD FOR 0.16 KM (0.1 MILE) TO TWO STORAGE TANKS ON THE LEFT AND THE MARK IS IN BETWEEN TWO SETS OF RAILROAD TRACKS. THE MARK IS A STANDARD DISK SET IN THE TOP OF A SQUARE CONCRETE MONUMENT THAT PROJECTS 51 MM (2 INCHES). IT IS 17.68 M (58 FEET) NORTHEAST OF THE NORTHEAST CORNER OF THE EAST STORAGE TANK, 5.18 M (17 FEET) SOUTH OF THE SOUTH RAIL OF THE MAIN TRACKS, 3.96 M (13 FEET) NORTH OF THE NORTH RAIL OF A SIDE TRACK, 0.61 M (2 FEET) EAST OF A SMALL PINE TREE AND 0.31 M (1 FOOT) WEST OF A METAL WITNESS POST.

* GPS CONTROL POINT INFORMATION FROM THE NATIONAL OCEANIC & ATMOSPHERIC ADMINISTRATION - NATIONAL GEODETIC SURVEY DATA SHEETS

TRAVERSE TIES



ALIGNMENT TIES



PROJECT NAME: CAMBRIDGE	
PROJECT NUMBER: BRF 027-1 (4)	
FILE NAME: S78F163TIE.DGN	PLOT DATE: 05-JUN-2012
PROJECT LEADER: M. EVANS-MONGEON	DRAWN BY: SURVEY
DESIGNED BY: SURVEY	CHECKED BY: SURVEY
TIE SHEET #1	SHEET 126 OF 214