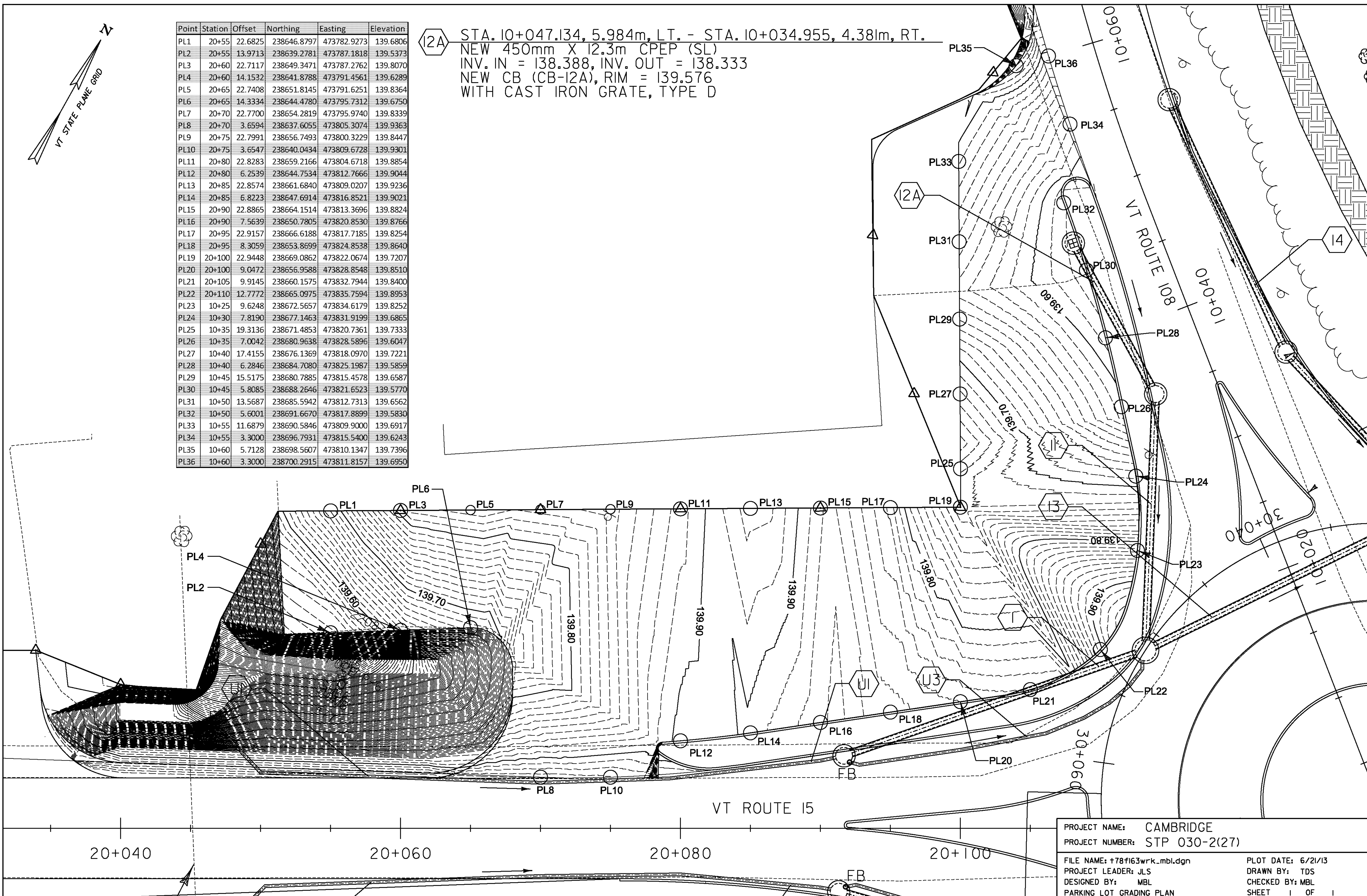


Point	Station	Offset	Northing	Easting	Elevation
PL1	20+55	22.6825	238646.8797	473782.9273	139.6806
PL2	20+55	13.9713	238639.2781	473787.1818	139.5373
PL3	20+60	22.7117	238649.3471	473787.2762	139.8070
PL4	20+60	14.1532	238641.8788	473791.4561	139.6289
PL5	20+65	22.7408	238651.8145	473791.6251	139.8364
PL6	20+65	14.3334	238644.4780	473795.7312	139.6750
PL7	20+70	22.7700	238654.2819	473795.9740	139.8339
PL8	20+70	3.6594	238637.6055	473805.3074	139.9363
PL9	20+75	22.7991	238656.7493	473800.3229	139.8447
PL10	20+75	3.6547	238640.0434	473809.6728	139.9301
PL11	20+80	22.8283	238659.2166	473804.6718	139.8854
PL12	20+80	6.2539	238644.7534	473812.7666	139.9044
PL13	20+85	22.8574	238661.6840	473809.0207	139.9236
PL14	20+85	6.8223	238647.6914	473816.8521	139.9021
PL15	20+90	22.8865	238664.1514	473813.3696	139.8824
PL16	20+90	7.5639	238650.7805	473820.8530	139.8766
PL17	20+95	22.9157	238666.6188	473817.7185	139.8254
PL18	20+95	8.3059	238653.8699	473824.8538	139.8640
PL19	20+100	22.9448	238669.0862	473822.0674	139.7207
PL20	20+100	9.0472	238656.9588	473828.8548	139.8510
PL21	20+105	9.9145	238660.1575	473832.7944	139.8400
PL22	20+110	12.7772	238665.0975	473835.7594	139.8953
PL23	10+25	9.6248	238672.5657	473834.6179	139.8252
PL24	10+30	7.8190	238677.1463	473831.9199	139.6865
PL25	10+35	19.3136	238671.4853	473820.7361	139.7333
PL26	10+35	7.0042	238680.9638	473828.5896	139.6047
PL27	10+40	17.4155	238676.1369	473818.0970	139.7221
PL28	10+40	6.2846	238684.7080	473825.1987	139.5859
PL29	10+45	15.5175	238680.7885	473815.4578	139.6587
PL30	10+45	5.8085	238688.2646	473821.6523	139.5770
PL31	10+50	13.5687	238685.5942	473812.7313	139.6562
PL32	10+50	5.6001	238691.6670	473817.8899	139.5830
PL33	10+55	11.6879	238690.5846	473809.9000	139.6917
PL34	10+55	3.3000	238696.7931	473815.5400	139.6243
PL35	10+60	5.7128	238698.5607	473810.1347	139.7396
PL36	10+60	3.3000	238700.2915	473811.8157	139.6950

(12A) STA. 10+047.134, 5.984m, LT. - STA. 10+034.955, 4.381m, RT.
 NEW 450mm X 12.3m CPEP (SL)
 INV. IN = 138.388, INV. OUT = 138.333
 NEW CB (CB-12A), RIM = 139.576
 WITH CAST IRON GRATE, TYPE D



PROJECT NAME: CAMBRIDGE
 PROJECT NUMBER: STP 030-2(27)
 FILE NAME: +78f163wrk.mbl.dgn
 PLOT DATE: 6/21/13
 PROJECT LEADER: JLS
 DRAWN BY: TDS
 DESIGNED BY: MBL
 CHECKED BY: MBL
 PARKING LOT GRADING PLAN
 SHEET 1 OF 1