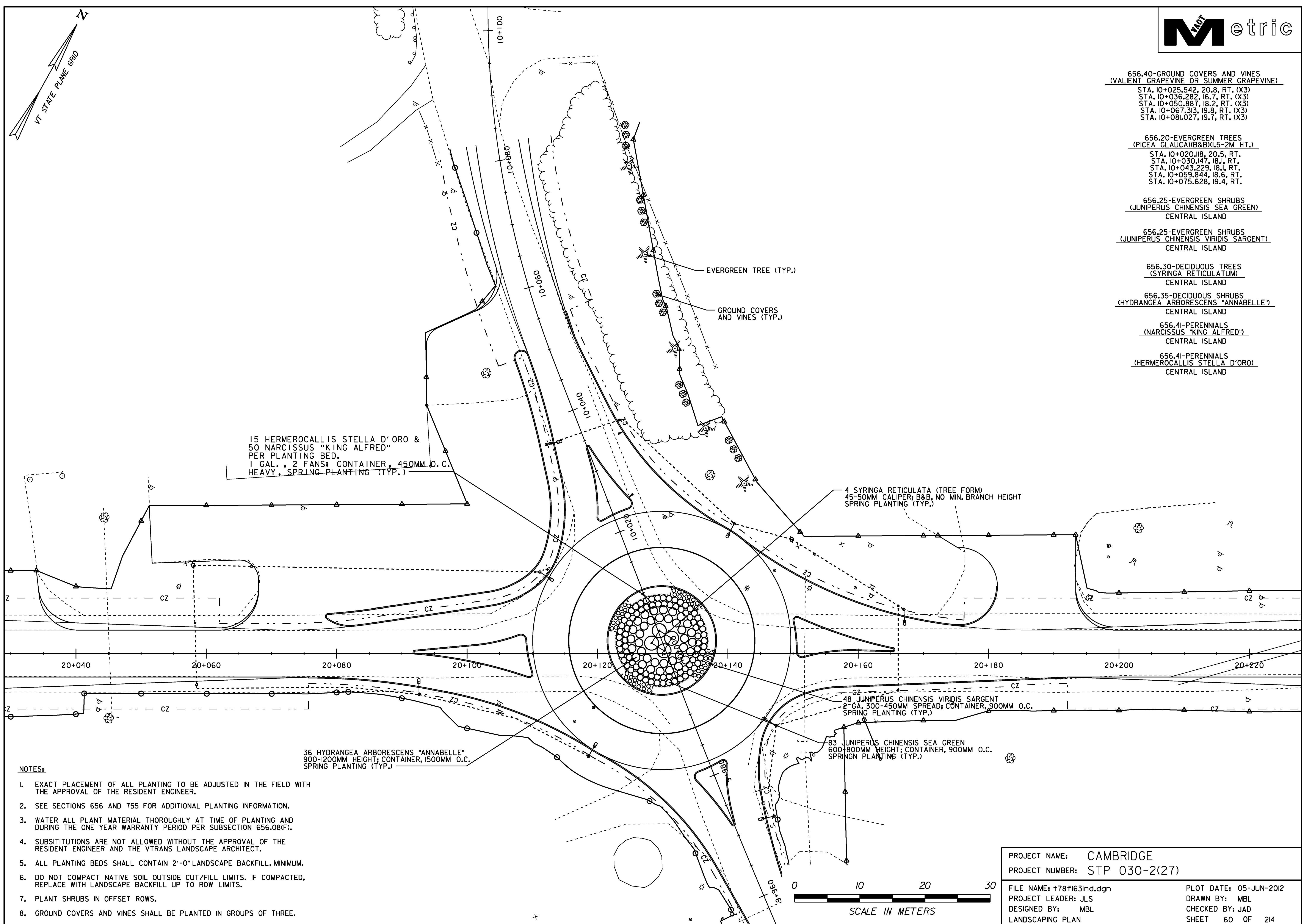


- 656.40-GROUND COVERS AND VINES
(VALIENT GRAPEVINE OR SUMMER GRAPEVINE)
STA. 10+025.542, 20.8, RT. (X3)
STA. 10+036.282, 16.7, RT. (X3)
STA. 10+050.887, 18.2, RT. (X3)
STA. 10+067.313, 19.8, RT. (X3)
STA. 10+081.027, 19.7, RT. (X3)
- 656.20-EVERGREEN TREES
(PICEA GLAUCAB&B)(1.5-2M HT.)
STA. 10+020.118, 20.5, RT.
STA. 10+030.147, 18.1, RT.
STA. 10+043.229, 18.1, RT.
STA. 10+059.844, 18.6, RT.
STA. 10+075.628, 19.4, RT.
- 656.25-EVERGREEN SHRUBS
(JUNIPERUS CHINENSIS SEA GREEN)
CENTRAL ISLAND
- 656.25-EVERGREEN SHRUBS
(JUNIPERUS CHINENSIS VIRIDIS SARGENT)
CENTRAL ISLAND
- 656.30-DECIDUOUS TREES
(SYRINGA RETICULATUM)
CENTRAL ISLAND
- 656.35-DECIDUOUS SHRUBS
(HYDRANGEA ARBORESCENS "ANNABELLE")
CENTRAL ISLAND
- 656.41-PERENNIALS
(NARCISSUS "KING ALFRED")
CENTRAL ISLAND
- 656.41-PERENNIALS
(HERMEROCALLIS STELLA D'ORO)
CENTRAL ISLAND



15 HERMEROCALLIS STELLA D'ORO &
50 NARCISSUS "KING ALFRED"
PER PLANTING BED.
1 GAL., 2 FANS; CONTAINER, 450MM O.C.
HEAVY, SPRING PLANTING (TYP.)

4 SYRINGA RETICULATA (TREE FORM)
45-50MM CALIPER; B&B, NO MIN. BRANCH HEIGHT
SPRING PLANTING (TYP.)

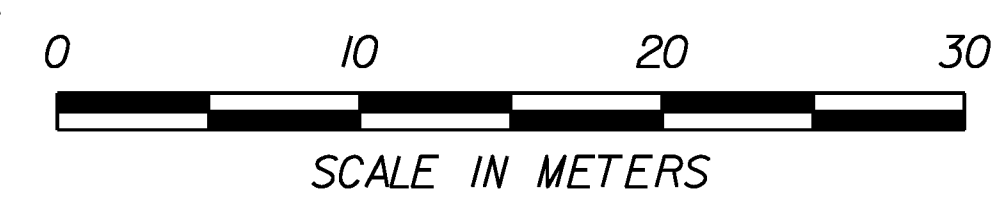
48 JUNIPERUS CHINENSIS VIRIDIS SARGENT
2" GA. 300-450MM SPREAD; CONTAINER, 900MM O.C.
SPRING PLANTING (TYP.)

83 JUNIPERUS CHINENSIS SEA GREEN
600-800MM HEIGHT; CONTAINER, 900MM O.C.
SPRING PLANTING (TYP.)

36 HYDRANGEA ARBORESCENS "ANNABELLE"
900-1200MM HEIGHT; CONTAINER, 1500MM O.C.
SPRING PLANTING (TYP.)

NOTES:

1. EXACT PLACEMENT OF ALL PLANTING TO BE ADJUSTED IN THE FIELD WITH THE APPROVAL OF THE RESIDENT ENGINEER.
2. SEE SECTIONS 656 AND 755 FOR ADDITIONAL PLANTING INFORMATION.
3. WATER ALL PLANT MATERIAL THOROUGHLY AT TIME OF PLANTING AND DURING THE ONE YEAR WARRANTY PERIOD PER SUBSECTION 656.08(F).
4. SUBSTITUTIONS ARE NOT ALLOWED WITHOUT THE APPROVAL OF THE RESIDENT ENGINEER AND THE VTRANS LANDSCAPE ARCHITECT.
5. ALL PLANTING BEDS SHALL CONTAIN 2'-0" LANDSCAPE BACKFILL, MINIMUM.
6. DO NOT COMPACT NATIVE SOIL OUTSIDE CUT/FILL LIMITS. IF COMPACTED, REPLACE WITH LANDSCAPE BACKFILL UP TO ROW LIMITS.
7. PLANT SHRUBS IN OFFSET ROWS.
8. GROUND COVERS AND VINES SHALL BE PLANTED IN GROUPS OF THREE.



PROJECT NAME: CAMBRIDGE	
PROJECT NUMBER: STP 030-2(27)	
FILE NAME: +78f163ind.dgn	PLOT DATE: 05-JUN-2012
PROJECT LEADER: JLS	DRAWN BY: MBL
DESIGNED BY: MBL	CHECKED BY: JAD
LANDSCAPING PLAN	SHEET 60 OF 214