

CURVE #2 POINTS		
STATION	NORTHING	EASTING
PC 9+838.190	238554.3709	473970.7648
PI 9+859.588	238575.4366	473974.5237
PT 9+876.602	238588.3846	473957.4871

CURVE DATA #2	
R = 35.000m	
$\Delta = 62^{\circ}52'55.25''$ LT.	
D = $49^{\circ}53'47.54''$	
L = 38.412m	
T = 21.398m	
C = 36.513m	
M = 5.139m	
E = 6.023m	
e = MATCH EXISTING	

900.675-SPECIAL PROVISION (HAND-PLACED BITUMINOUS CONCRETE MATERIAL, DRIVES)  
 STA. 9+934.418, LT. (6.30m GRAVEL)

CONSTRUCT DRIVE  
 STA. 9+934.418, LT. (6.30m GRAVEL)  
 STA. 9+943.594, RT. (8.0m PAVED)

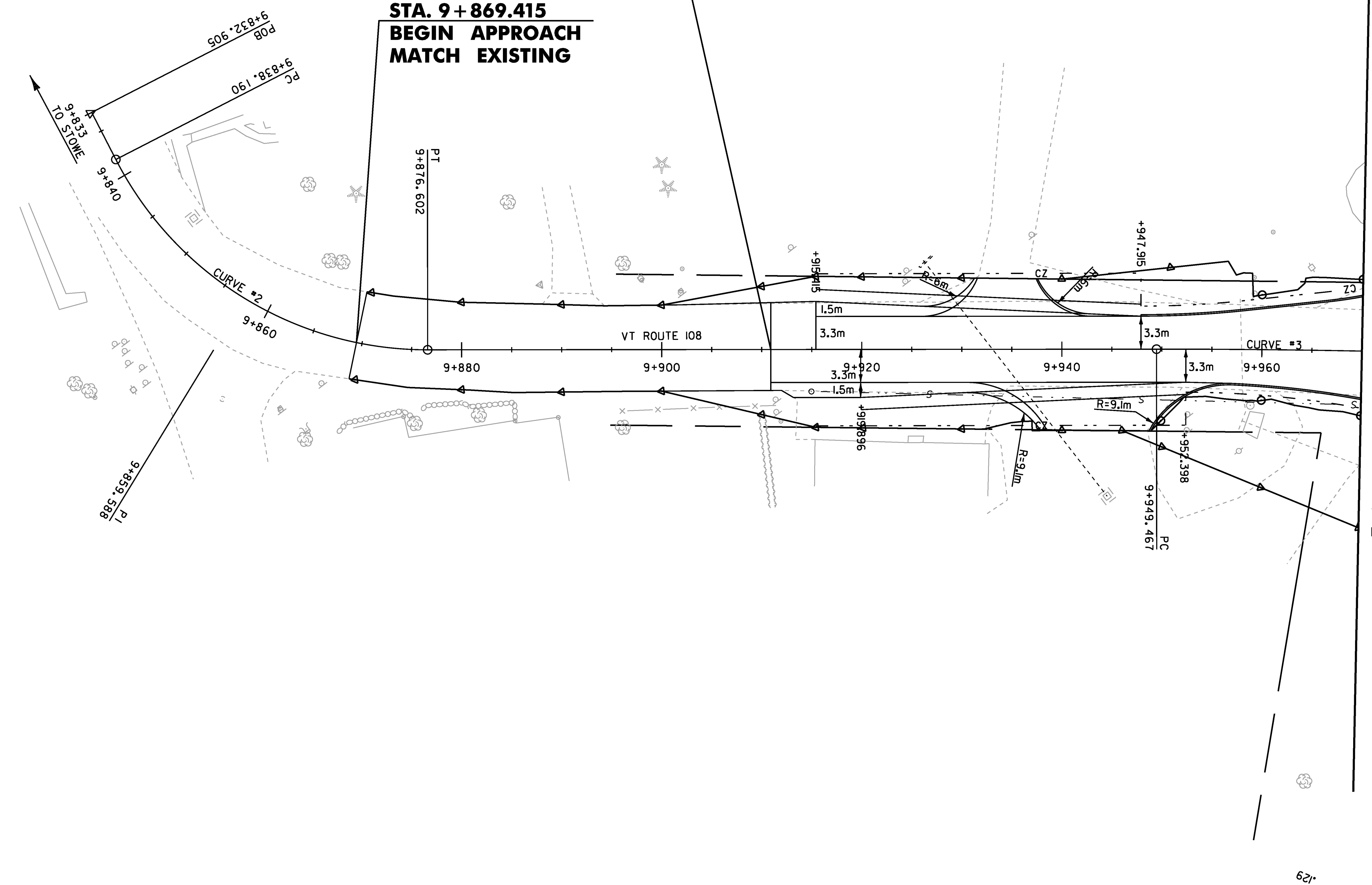
604.42-CHANGING ELEVATION OF SEWER MANHOLES  
 STA. 9+914.965, RT.  
 STA. 9+958.408, RT.

CURVE #3 POINTS		
STATION	NORTHING	EASTING
PC 9+949.467	238632.4740	473899.4754
PI 9+970.490	238645.1947	473882.7379
PT 9+991.506	238658.6076	473866.5497

CURVE DATA #3	
R = 1000.000m	
$\Delta = 02^{\circ}24'31.30''$ RT.	
D = $01^{\circ}44'46.96''$	
L = 42.040m	
T = 21.023m	
C = 42.037m	
M = 0.221m	
E = 0.221m	
e = NC	

**STA. 9 + 910.905**  
**END APPROACH**  
**BEGIN PROJECT**  
**STP 030-2(27)**

**STA. 9 + 869.415**  
**BEGIN APPROACH**  
**MATCH EXISTING**



MATCHLINE - STA. 9+970 - SEE LAYOUT PLAN 2



PROJECT NAME: CAMBRIDGE	PLOT DATE: 05-JUN-2012
PROJECT NUMBER: STP 030-2(27)	DRAWN BY: MBL
FILE NAME: t78f163bdr.dgn	CHECKED BY: JAD
PROJECT LEADER: JLS	SHEET 47 OF 214
DESIGNED BY: MBL	
LAYOUT PLAN 4	