

**VT ROUTE 108 STA. 10+082.794  
END ROADWAY PROJECT  
STP 030-2(27)  
BEGIN BRIDGE PROJECT  
BRF 027-1(4)**

**CONSTRUCT DRIVE**  
 STA. 10+055.294, LT. (8m PAVED)  
 STA. 20+073.010, LT. (10m PAVED)  
 STA. 20+187.354, LT. (12m PAVED)

**620.50-REMOVING AND RESETTING FENCE**  
 STA. 10+072.000 - STA. 10+082.794, RT.



**CURVE #4 POINTS**

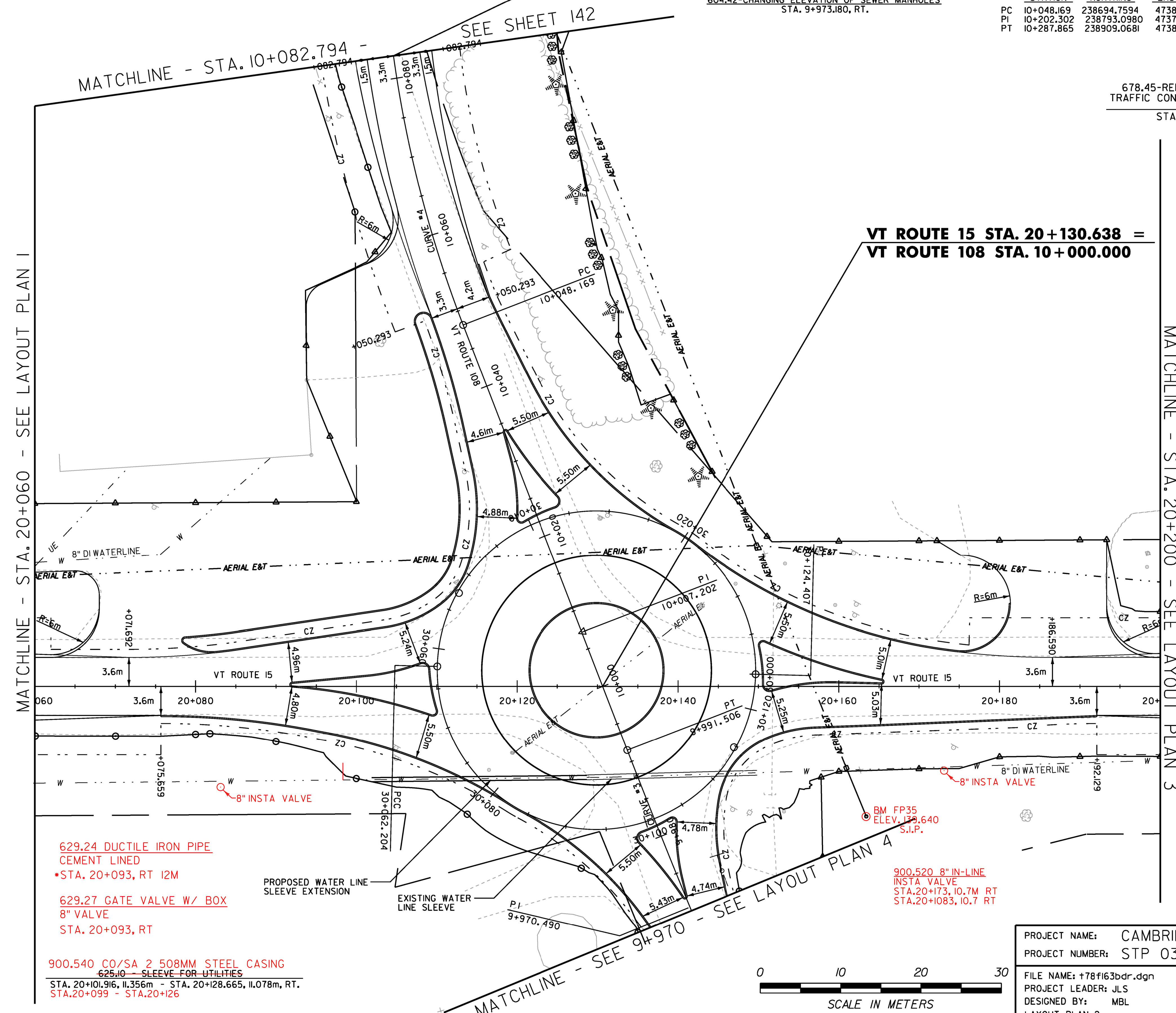
STATION	NORTHING	EASTING
PC 10+048.169	238694.7594	473822.9178
PI 10+202.302	238793.0980	473704.2320
PT 10+287.865	238909.0681	473805.7590

**CURVE DATA #4**

R	= 150.000m
Δ	= 9°53'24.93" RT.
D	= 1°58'33.09"
L	= 239.695m
T	= 154.132m
C	= 214.995m
M	= 45.385m
E	= 65.074m
e	= 7.8 %

**678.45-REMOVAL OF EXISTING  
TRAFFIC CONTROL SIGNAL SYSTEM**  
 STA. 10+000.000

**VT ROUTE 15 STA. 20+130.638 =  
VT ROUTE 108 STA. 10+000.000**



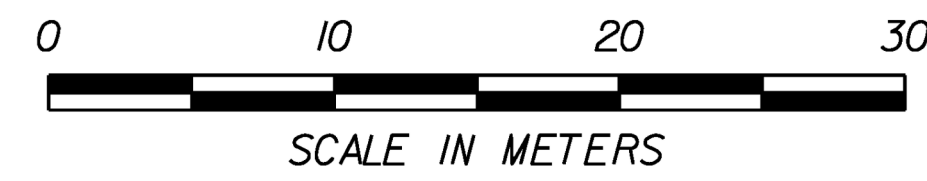
- 619.17 YEILDING MARKER POST**
- STA. 20+047, 7.6 LT U1
  - STA. 20+047.5, 6.9 RT U2
  - STA. 20+255.3, 7.8 LT U5
  - STA. 20+255.3, 7.3 RT U6
  - STA. 9+940, 6.1 LT U7
  - STA. 9+932, 6.0 RT U8
  - STA. 20+173, 7.3 LT PB-6
  - STA. 20+171, 5.6 RT PB-7
  - STA. 20+048, 4.7 LT PB-1
  - STA. 10+036.5, 4.8 RT PB-3
  - STA. 20+155, 6.0 RT PB-5
  - STA. 10+016, 12.0 RT P-7
  - STA. 017.6, 19.8 RT P-7
  - STA. 9+957, 19.0 RT P-16
  - 7.3 LT P-19

**629.24 DUCTILE IRON PIPE  
CEMENT LINED  
•STA. 20+093, RT 12M**

**629.27 GATE VALVE W/ BOX  
8" VALVE  
STA. 20+093, RT**

**900.540 CO/SA 2 508MM STEEL CASING  
625.10 SLEEVE FOR UTILITIES  
STA. 20+101.916, 11.356m - STA. 20+128.665, 11.078m, RT.  
STA. 20+099 - STA. 20+126**

**900.520 8" IN-LINE  
INSTA VALVE  
STA. 20+173, 10.7M RT  
STA. 20+1083, 10.7 RT**



PROJECT NAME:	CAMBRIDGE	PLOT DATE:	05-JUN-2012
PROJECT NUMBER:	STP 030-2(27)	DRAWN BY:	MBL
FILE NAME:	+78f163bdr.dgn	CHECKED BY:	JAD
PROJECT LEADER:	JLS	SHEET	45 OF 214
DESIGNED BY:	MBL		
LAYOUT PLAN 2			