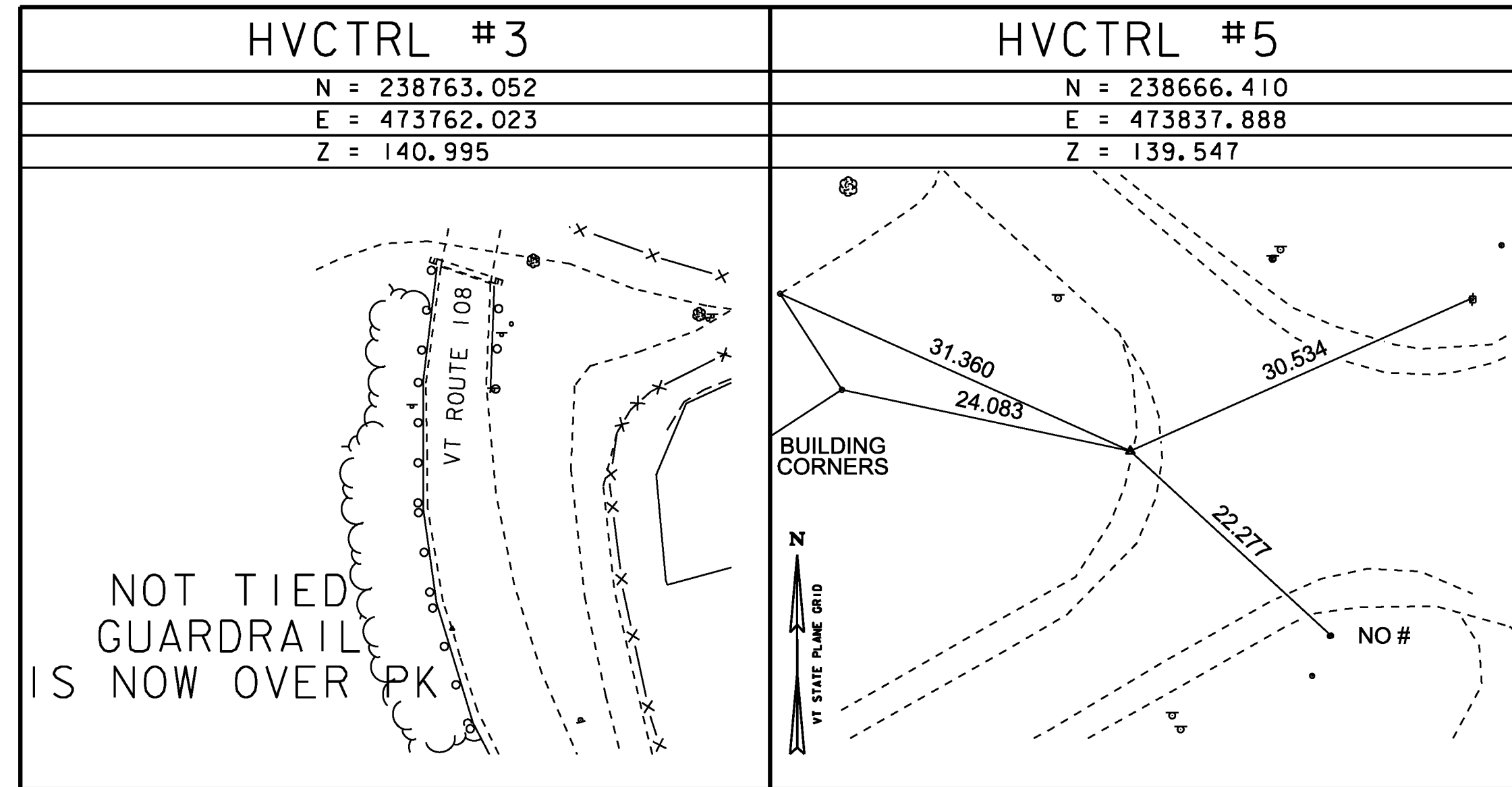


TRAVERSE TIES



* MAIN TRAVERSE REVISED 7/2/2010 BY R.GILMAN P.C. & P. WINTERS

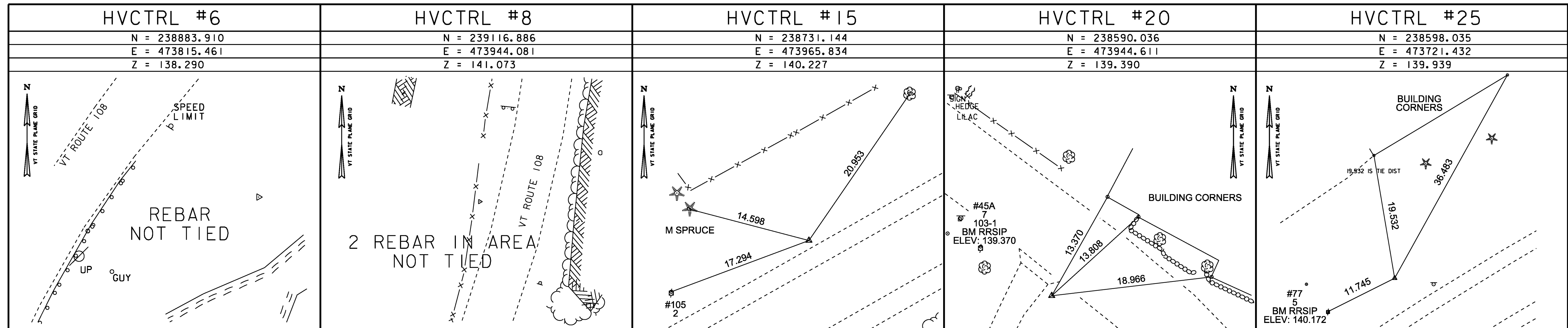
GPS CONTROL POINT

HVCTRL #1

W-20
 N = 238967.432
 E = 474966.801
 Z = 140.786

SURFACE MARK REPORTED DESTROYED BY NATIONAL GEODETIC SURVEY 2009 (DJM)
 THE MONUMENT IS SLIGHTLY LOOSE. TO REACH THE MARK FROM THE JUNCTION OF STATE HIGHWAY 108 AND 15 IN JEFFERSONVILLE, GO EAST ON HIGHWAY 15 FOR 0.65 MILE TO A FORK. TAKE THE LEFT FORK AND GO NORTHEAST ON A PAVED ROAD FOR 0.1 MILE TO TWO STORAGE TANKS ON THE LEFT AND THE MARK IN BETWEEN TWO SETS OF RAILROAD TRACKS. THE MARK IS A STANDARD DISK SET IN THE TOP OF A SQUARE CONCRETE MONUMENT THAT PROJECTS 2 INCHES. IT IS 58 FEET NORTHEAST OF THE NORTHEAST CORNER OF THE EAST STORAGE TANK, 17 FEET SOUTH OF THE SOUTH RAIL OF THE MAIN TRACKS, 13 FEET NORTH OF THE NORTH RAIL OF A SIDE TRACK, 2 FEET EAST OF A SMALL PINE TREE AND 1-FOOT WEST OF A METAL WITNESS POST.

TRAVERSE TIES



ALIGNMENT TIES

SEE LAYOUT PLANS FOR ALIGNMENT POINT INFORMATION.

DATUM	
VERTICAL	NAVD 88
HORIZONTAL	NAD 83(96)

PROJECT NAME: CAMBRIDGE	
PROJECT NUMBER: STP 030-2(27)	
FILE NAME: t78f163frm.dgn	PLOT DATE: 05-JUN-2012
PROJECT LEADER: JLS	DRAWN BY: MBL
DESIGNED BY: MBL	CHECKED BY: JAD
TIE SHEET	SHEET 35 OF 214